

Product datasheet for **RC217018**

NXF2 (NM_017809) Human Tagged ORF Clone

Product data:

Product Type:	Expression Plasmids
Product Name:	NXF2 (NM_017809) Human Tagged ORF Clone
Tag:	Myc-DDK
Symbol:	NXF2
Synonyms:	CT39; FLJ20416; NXF2B; TAPL-2
Mammalian Cell Selection:	Neomycin
Vector:	pCMV6-Entry (PS100001)
E. coli Selection:	Kanamycin (25 ug/mL)



[View online »](#)

ORF Nucleotide Sequence:

>RC217018 ORF sequence
 Red=Cloning site Blue=ORF Green=Tags(s)

TTTTGTAATACGACTCACTATAGGGCGGCCGGAATTCGTCGACTGGATCCGGTACCGAGGAGATCTGCC
 GCC**CGCATCGCC**

ATGTGCTCTACTCTAAAGAAGTGTGGGACATACAGAACTGAAGTTCAGAAATGCCATGACCATGGTAGCA
 CTTTTCAAGGAAGAAAGAAAGGTGGGAGTCTTTCCGGGATAATTTTGACAAGAGGAGCTGCATTATGA
 ACATGGTGGGTATGAGCGCCCGCCTTCACACTGCCAGGAGAATGATGGAAGCGTGGAGATGAGGGATGTC
 CACAAGGACCAACAACCTAAGACACACTCCTTATAGCATCCGATGCGAAAGAAGAATGAAATGGCATAGTG
 AAGACGAAATCCGTATTACCACGTGGAGAAATAGAAAACCTCCGGAGAGAAAAATGAGTCAGAACACACA
 GGATGGATACACAAGGAAGTGGTTAAGGTCACAATTCCTTACGGGATAAAGTATGACAAGGCATGGCTA
 ATGAATCAATCCAGAGCCATTGCAGTGACCGCTTCACTCCGGTTGATTTCCACTACGTCGAAATCGGG
 CATGCTTCTTTGTCCAGGATGCTAGCGCTGCCTCCGATTGAAGGATGTCAGTTATAAGATTTATGATGA
 TGAGAACCAAAAGATATGTATTTGTCAATCATTCTACTGCGCCCTACTCTGTGAAGAATAAGTTGAAG
 CCAGGCCAAATGGAGATGCTAAAGCTGACCATGAACAAACGGTACAATGTCTCCAGCAAGCTCTTGATC
 TCCAGAATCTCCGCTTGACCCAGACTTGATGGGCCGTGACATTGATATAATCCTGAATCGAAGAACTG
 CATGGCTGCCACCCTGAAGATCATTGAAAGAAATTTCCCTGAGCTGTTGTCTTTGAACTTGTCACAAC
 AAGCTGTACCAGCTGGATGGCCTTTCTGACATTACAGAGAAGGCTCCCAAAGTCAAGACCCTGAATCTCT
 CCAAAAATAAGCTGGAGTCGGCGTGGGAGTTGGGCAAGGTGAAAGGGCTGAAGCTCGAAGAGCTATGGCT
 AGAAGGGAACCCGTTGTGCAGCACCTTCTCGGACCAGTCCGCCTATGTAAGTGCCATCCGGGATTGTTTC
 CCCAAGTTGTTACGCCTGGACGGCCGAGAGTTATCCGCACCAGTGATTGTTGACATTGACAGCTCTGAGA
 CAATGAAACCTGCAAGGAAAACCTTTACTGGATCTGAGACCCTAAAGCATTATAGTCCGCAATTCCTGCA
 GCAGTATTACTCGATCTATGACTCTGGAGATCGACAGGGTCTCCTCGGTGCTTACCACGATGAGGCCTGC
 TTCTCCTTGCTATTCCCTTCGACCCCAAGGACTCAGCCCGAGCAGCTTGTGCAAGTACTTTGAGGATA
 GCAGGAATATGAAAACACTCAAGGACCCCTACCTGAAGGGGGAAGTCTGAGGCGCACAAAACGTGACAT
 TGTGGACTCCCTCAGTGCCTTGCCTCAAACTCAGCATGACCTCAGCTCCATCCTGGTGGAGCTGTGGTGC
 CAGACGGAAAGGATGCTCTGCTTTTCTGTCAATGGGGTTTTCAAGGAAGTGAAGGACAGTCTCAGGGTT
 CTGTTCTCGCCTTCAACCCGACCTTATTGCTACCCTGGCAGCAGTCCAGTCTGTGCATCGTGAATGA
 CGAGCTGTTTGTGAGGGATGCCAGCCCCAAGAGACTCAGAGTGCCTTCTCCATCCAGTGTCCACACTC
 TCCTCCAGCTCTGAGCCCTCCCTCTCCAGGAGCAGCAGGAAATGGTGCAGGCTTCTCTGCCCAGTCTG
 GGATGAAACTGGAGTGGTCTCAGAAGTGCTTCCAGGACAATGAGTGAAGTACACTAGAGCTGGCCAGGC
 CTTCACTATGCTCCAGACCGAGGCAAGATCCCCGAGAGGCCTTCAAGCAAATCTCC

ACGCGTACGCGGCCGCTCGAGCAGAAACTCATCTCAGAAGAGGATCTGGCAGCAAATGATATCCTGGATT
 ACAAGGATGACGACGATAAGGTTTAA

Protein Sequence:

>RC217018 protein sequence
 Red=Cloning site Green=Tags(s)

MCSTLKKCGTYRTEVAECHDHGSTFQGRKKGGSSFRDNFDKRSCHYEHGGYERPPSHCQENDGSVEMRDV
 HKDQQLRHTPYRIRCERRMKWSEDEIRITTWNRKPPERKMSQNTQDGYTRNWFVKTIPYGIKDKAWL
 MNSIQSHCSRFPVDFHYVRNRAFVQDASAASALKDVSYKIYDDENQKICIFVNHSTAPYSVKNKLL
 PGQMEMLKLTMNKRYNVSQALDLQNLRFDPDLMGRDIDIIILNRRNCMAATLKIERNFPELLSLNLCNN
 KLYQLDGLSDITEKAPKVKTLNLSKNKLESAWELGKVKGLKLEELWLEGNPLCSTFSDQSAYVSAIRD
 PKLLRLDGRELSAPVIVDIDSSETMKPCKENFTGSETLKHLLVLFQYYSIYDSGDRQGLLGAYHDEAC
 FSLAIPFDPKDSAPSSLCKYFEDSRNMKTKDPYKLGELLRRTRKRDIVDSLALPKTQHDLSLILVDVWC
 QTERMLCFSVNGVFKVEVEGQSQGSVLAFTRTFIATPGSSSLCIVNDELFRDASPQETQSASFIPVSTL
 SSSSEPSLSQEQQEMVQAFSAQSGMKLEWSQKCLQDNEWNYTRAGQAFMLQTEGKIPAEAFKQIS

TRTRPLEQKLISEEDLAANDILDYKDDDDKV

Chromatograms: https://cdn.origene.com/chromatograms/mk6195_d02.zip

Restriction Sites: SgfI-MluI

Cloning Scheme:



ACCN: NM_017809

ORF Size: 1878 bp

OTI Disclaimer: The molecular sequence of this clone aligns with the gene accession number as a point of reference only. However, individual transcript sequences of the same gene can differ through naturally occurring variations (e.g. polymorphisms), each with its own valid existence. This clone is substantially in agreement with the reference, but a complete review of all prevailing variants is recommended prior to use. [More info](#)

OTI Annotation: This clone was engineered to express the complete ORF with an expression tag. Expression varies depending on the nature of the gene.

Components: The ORF clone is ion-exchange column purified and shipped in a 2D barcoded Matrix tube containing 10ug of transfection-ready, dried plasmid DNA (reconstitute with 100 ul of water).

- Reconstitution Method:
1. Centrifuge at 5,000xg for 5min.
 2. Carefully open the tube and add 100ul of sterile water to dissolve the DNA.
 3. Close the tube and incubate for 10 minutes at room temperature.
 4. Briefly vortex the tube and then do a quick spin (less than 5000xg) to concentrate the liquid at the bottom.
 5. Store the suspended plasmid at -20°C. The DNA is stable for at least one year from date of shipping when stored at -20°C.

RefSeq: [NM_017809.3](#), [NP_060279.2](#)

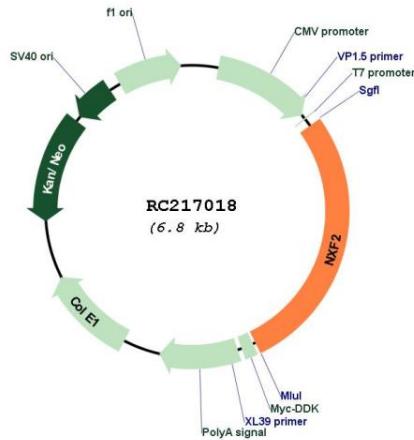
RefSeq Size: 3848 bp

RefSeq ORF: 1880 bp

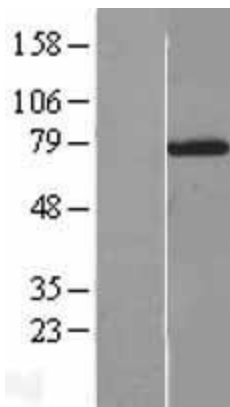
Locus ID: 56001
Cytogenetics: Xq22.1
MW: 71.6 kDa

Gene Summary: This gene encodes a member of a family of nuclear RNA export proteins. The encoded protein is associated with the nuclear envelope and aids in the export of mRNAs. There is a closely related paralog of this gene located adjacent on chromosome X and on the opposite strand. [provided by RefSeq, Aug 2013]

Product images:



Circular map for RC217018



Western blot validation of overexpression lysate (Cat# [LY413518]) using anti-DDK antibody (Cat# [TA50011-100]). Left: Cell lysates from untransfected HEK293T cells; Right: Cell lysates from HEK293T cells transfected with RC217018 using transfection reagent MegaTran 2.0 (Cat# [TT210002]).