

Product datasheet for **RC217017**

PMPCA (NM_015160) Human Tagged ORF Clone

Product data:

Product Type:	Expression Plasmids
Product Name:	PMPCA (NM_015160) Human Tagged ORF Clone
Tag:	Myc-DDK
Symbol:	PMPCA
Synonyms:	Alpha-MPP; CLA1; CPD3; INPP5E; P-55; SCAR2
Vector:	pCMV6-Entry (PS100001)
E. coli Selection:	Kanamycin (25 ug/mL)
Cell Selection:	Neomycin



[View online »](#)

ORF Nucleotide Sequence:

>RC217017 representing NM_015160
 Red=Cloning site Blue=ORF Green=Tags(s)

TTTTGTAATACGACTCACTATAGGGCGGCCGGAATTCGTCGACTGGATCCGGTACCGAGGAGATCTGCC
 GCC**GCGATCGCC**

ATGGCGGCTGTGGTCTGGCGGCACGCGTTGCTGCGGGCTCGGGTTCTTGGGGCTGTTCCGGCTGA
 GGTTTGGACCTCCTGCGTACAGACGTTTTAGTAGTGGTGGTGCCTATCCCAACATCCCCCTCTTCTCC
 CTTACCTGGAGTACCCAAGCCTGTTTTTCTACAGTTGATGGACAGGAAAAGTTTAAAACAAAGTAACC
 ACATTGGATAATGGGCTTCGCGTGGCATCTCAGAATAAGTTTGGACAGTTTTGTACAGTAGGAATCTTA
 TCAATTCAGGATCGAGATATGAAGCGAAATACCTTAGTGAATTGCTCACTTTTTGGAAAAATTGGCATT
 TTCGCTACTGCTCGATTTGACAGCAAAGATGAAATCTGCTTACGTTGGAAAAGCATGGGGTATCTGT
 TACTGCCAGACATCAAGAGACACCACCTGTATGCTGTGCTGCTGATAGCAAAGCTTGGACACGGTGG
 TTGCCTTACTGGCTGATGTGTTCTGCAGCCCCGGCTAACAGATGAAGAAGTCGAGATGACGCGGATGGC
 GGTCAGTTTGGCTGGAGGACCTGAACCTGCGGCCTGACCCAGAGCCACTTCTCACCGAGATGATTTCAT
 GAAGCGGCTTACAGGGAGAACACAGTTGGCCTCCACCGTTTCTGCCCCACAGAAAACGTAGCAAAGATCA
 ATCGAGAGGTGCTGCATTCTACCTGAGGAACTACTACACTCCCAGCCGATGGTGTGGCCGGCGTGGG
 CGTGGAGCACGAGCATCTGGTGGACTGTGCCCGGAAGTACCTCCTGGGGTCCAGCCGGCCTGGGGGAGC
 GCAGAGGCCGTGGATATTGACAGATCTGTGCCAGTACACTGGGGGATTGCCAAGCTAGAAAAGAGACA
 TGTCCAATGTCAGCCTGGGCCGACCCCATCCCCGAGCTCACGCACATCATGGTTGGACTGGAGAGCTG
 CTCCTTCTGGAGGAGACTTCACTCCCTTTGCAGTGTGAACATGATGATGGGCGGAGGTGGCTCCTTC
 TCGGCTGGTGGGCCCGCAAGGGCATGTTCTCCAGGCTACCTCAACGTGCTCAACAGGCACCCTGGA
 TGTATAACGCGACCTCTACCACCACAGCTACGAGGACACTGGCCTCCTTTCATCCATGCCAGGCCGA
 CCCAAGACAGGTTTCGAGAAATGGTAGAAATCATCACAAGGAGTTTATTTAATGGGCGGAACCGTGGAC
 ACGGTGGAGCTGGAACGAGCCAAGACGAGCTGACATCAATGCTCATGATGAACCTGGAATCCAGGCCTG
 TGATCTTCGAGGATGTGGGGAGGAGGTGCTGGCCACTCGCTCCAGAAAGCTGCCGACGAGCTGTGCAC
 GCTCATCCGCAACGTGAAGCCGGAAGATGTGAAGAGAGTCGTTCTAAGATGCTCCGAGGGAAGCCGGCA
 GTGGCCGCCCTGGGTGACCTGACTGACCTGCCACGTATGAGCACATCCAGACCGCCTGTGAGTAAGG
 ACGGGCGCCTGCCAGGACGTACCGCTCTTCCGG

ACGCGTACGCGGCCGCTCGAGCAGAAACTCATCTCAGAAGAGGATCTGGCAGCAAATGATATCTGGATT
 ACAAGGATGACGACGATAAGGTTTAA

Protein Sequence:

>RC217017 representing NM_015160
 Red=Cloning site Green=Tags(s)

MAAVVLAATRLLRSGSWGCSRLRFPPAYRRFSSGGAYPNIPSSPLPGVPKPVFATVDGQEKFKVKT
 TLDNGLRVASQNKFGQFCTVGILINSGSRYEAKYLSGIAHFLEKLAFSSSTARFDSKDEILLLEKHGGIC
 YCQTSRDTTMYAVSADSKGLDVTVALADVVLQPRLTDEEVEMTRMAVQFELEDLNLRPDPEPLLTEMIH
 EAAAYRENTVGLHRFCPTENVAKINREVLHSLRNYYTPDRMVLAGVGVHEHLVDCARKYLLGVQPAWGS
 AEAVDIDRSVAQYTGGIKLERDMSNVSLGPTPIPELTHIMVGLSECSFLEEDFIPFAVLNMMGGGGSF
 SAGGPGKGMFSRLYLNVLNRHHWYNATSYHHSYEDTGLLCIHASADPRQVREMEIITKEFILMGGTV
 TVELERAKTQLTSMNLESRPVIFEDVGRQVLATRSRKLPHLCTLIRNVKPEDVKRVASKMLRGKPA
 VAALGDLTDLPTYEHIQTALSSKDGRLPRTYRFR

TRTRPLEQKLISEEDLAANDILDYKDDDDKV

Chromatograms:

https://cdn.origene.com/chromatograms/mk6275_f11.zip

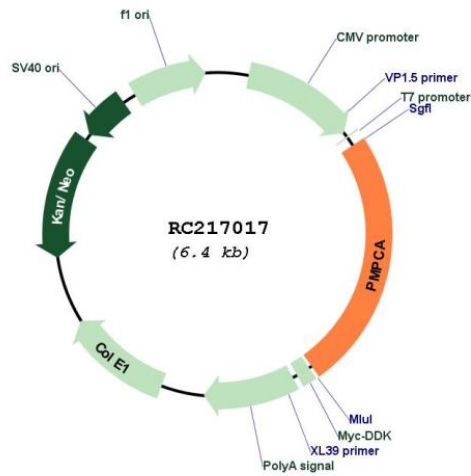
Restriction Sites:

SgfI-MluI

Cloning Scheme:



Plasmid Map:

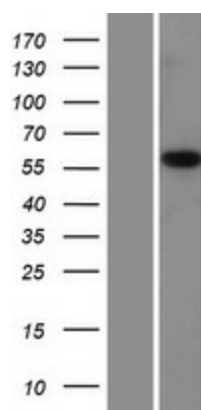


ACCN:

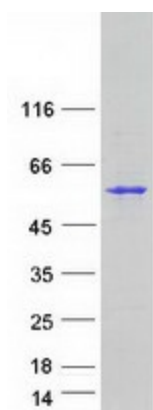
NM_015160

ORF Size:	1575 bp
OTI Disclaimer:	The molecular sequence of this clone aligns with the gene accession number as a point of reference only. However, individual transcript sequences of the same gene can differ through naturally occurring variations (e.g. polymorphisms), each with its own valid existence. This clone is substantially in agreement with the reference, but a complete review of all prevailing variants is recommended prior to use. More info
OTI Annotation:	This clone was engineered to express the complete ORF with an expression tag. Expression varies depending on the nature of the gene.
RefSeq:	NM_015160.1 , NM_015160.2 , NP_055975.1
RefSeq Size:	2097 bp
RefSeq ORF:	1578 bp
Locus ID:	23203
Domains:	Peptidase_M16, Peptidase_M16_C
Protein Families:	Druggable Genome, Protease
MW:	58.1 kDa
Gene Summary:	The protein encoded by this gene is found in the mitochondrion, where it represents the alpha subunit of a proteolytic heterodimer. This heterodimer is responsible for cleaving the transit peptide from nuclear-encoded mitochondrial proteins. Defects in this gene are a cause of spinocerebellar ataxia, autosomal recessive 2. [provided by RefSeq, Mar 2016]

Product images:



Western blot validation of overexpression lysate (Cat# [LY414752]) using anti-DDK antibody (Cat# [TA50011-100]). Left: Cell lysates from untransfected HEK293T cells; Right: Cell lysates from HEK293T cells transfected with RC217017 using transfection reagent MegaTran 2.0 (Cat# [TT210002]).



Coomassie blue staining of purified PMPCA protein (Cat# [TP317017]). The protein was produced from HEK293T cells transfected with PMPCA cDNA clone (Cat# RC217017) using MegaTran 2.0 (Cat# [TT210002]).