

## Product datasheet for **RC217012**

### ARL4 (ARL4A) (NM\_005738) Human Tagged ORF Clone

#### Product data:

**Product Type:** Expression Plasmids  
**Product Name:** ARL4 (ARL4A) (NM\_005738) Human Tagged ORF Clone  
**Tag:** Myc-DDK  
**Symbol:** ARL4  
**Synonyms:** ARL4  
**Mammalian Cell Selection:** Neomycin  
**Vector:** pCMV6-Entry (PS100001)  
**E. coli Selection:** Kanamycin (25 ug/mL)  
**ORF Nucleotide Sequence:** >RC217012 representing NM\_005738  
 Red=Cloning site Blue=ORF Green=Tags(s)

TTTTGTAATACGACTCACTATAGGGCGCCGGGAATTCGTCGACTGGATCCGGTACCGAGGAGATCTGCC  
 GCC**CGATCGCC**

ATGGGGAATGGGCTGTCAGACCAGACTTCTATCCTGTCCAACCTGCCTTCATTTCACTTTCCACATTG  
 TTATTCTGGGTTTGGACTGTGCTGGAAAGACAACCTGTCTTATACAGGCTGCAGTTCAATGAATTTGTAAA  
 TACCGTACCTACCAAAGGATTTAACTGAGAAAATTAAGGAACCTTGGGAAATTTAAAACAGTCACT  
 TTTCATTCTGGGATGTAGGTGGTCAAGAGAAAATTAAGGCCACTGTGGAAGTCATATACCAGATGCACAG  
 ATGGCATTGTATTTGTTGTGGACTCTGTTGATGTCGAAAGGATGGAAGAAGCCAAAACCTGAACCTCACAA  
 AATAACTAGGATATCAGAAAATCAGGGAGTCCCTGACTTATAGTTGCTAACAAACAAGATTTGAGGAAC  
 TCATTGCACTTTTCAAAAATGAGAAAATGTTAGCAATGGGTGAACCTGAGCTCATCAACTCCTTGGCATT  
 TGCAGCCTACCTGTGCAATCATAGGAGATGGCCTAAAGGAAGGACTTGAGAAAACATGATATGATCAT  
 TAAAAGAAGAAAATGTTGCGGCAACAGAAAAGAAAAGA

**ACGCGT**ACGCGGCCGCTCGAGCAGAAAACCTCATCTCAGAAGAGGATCTGGCAGCAAATGATATCCTGGATT  
 ACAAGGATGACGACGATAAGGTTTAA

**Protein Sequence:** >RC217012 representing NM\_005738  
 Red=Cloning site Green=Tags(s)

MGNGLSDQTSILSNLPSFQSFHIVILGLDCAGKTTVLRYLQFNEFVNTVPTKGFNTEKIKVTLGNSKTVT  
 FHFWDVGGQEKLRPLWKS YTRCTDGI VVVDSDVERMEEAKTELHKITRISENQGVPLIVANKQDLRN  
 SLSLSEIEKLLAMGELSSSTPWHLQPTCAIIGDGLKEGLEKLHDMIKRRKMLRQQKKR

**TRTRPLEQKLISEEDLAANDILDYKDDDDKV**



[View online »](#)

**Chromatograms:** [https://cdn.origene.com/chromatograms/mk6365\\_a04.zip](https://cdn.origene.com/chromatograms/mk6365_a04.zip)

**Restriction Sites:** SgfI-MluI

**Cloning Scheme:**



**ACCN:** NM\_005738

**ORF Size:** 600 bp

**OTI Disclaimer:** The molecular sequence of this clone aligns with the gene accession number as a point of reference only. However, individual transcript sequences of the same gene can differ through naturally occurring variations (e.g. polymorphisms), each with its own valid existence. This clone is substantially in agreement with the reference, but a complete review of all prevailing variants is recommended prior to use. [More info](#)

**OTI Annotation:** This clone was engineered to express the complete ORF with an expression tag. Expression varies depending on the nature of the gene.

**Components:** The ORF clone is ion-exchange column purified and shipped in a 2D barcoded Matrix tube containing 10ug of transfection-ready, dried plasmid DNA (reconstitute with 100 ul of water).

**Reconstitution Method:**

1. Centrifuge at 5,000xg for 5min.
2. Carefully open the tube and add 100ul of sterile water to dissolve the DNA.
3. Close the tube and incubate for 10 minutes at room temperature.
4. Briefly vortex the tube and then do a quick spin (less than 5000xg) to concentrate the liquid at the bottom.
5. Store the suspended plasmid at -20°C. The DNA is stable for at least one year from date of shipping when stored at -20°C.

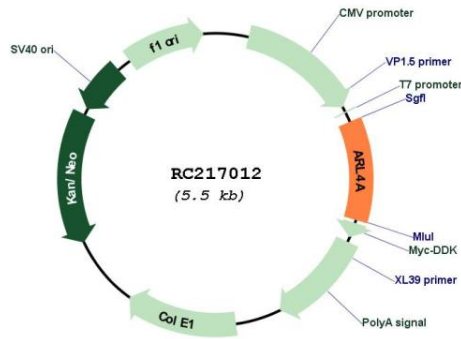
**Note:** Plasmids are not sterile. For experiments where strict sterility is required, filtration with 0.22um filter is required.

**RefSeq:** [NM\\_005738.5](#)

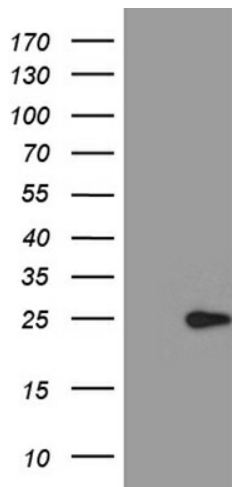
**RefSeq Size:** 3162 bp

**RefSeq ORF:** 603 bp  
**Locus ID:** 10124  
**UniProt ID:** [P40617](#)  
**Cytogenetics:** 7p21.3  
**Domains:** RAS, RAB, SAR, ARF, arf  
**Protein Families:** Stem cell - Pluripotency  
**MW:** 22.4 kDa  
**Gene Summary:** ADP-ribosylation factor-like 4A is a member of the ADP-ribosylation factor family of GTP-binding proteins. ARL4A is similar to ARL4C and ARL4D and each has a nuclear localization signal and an unusually high guanine nucleotide exchange rate. ARL4A is located in both the nuclear and extranuclear cell compartments. Multiple transcript variants encoding the same protein have been found for this gene. [provided by RefSeq, Jul 2008]

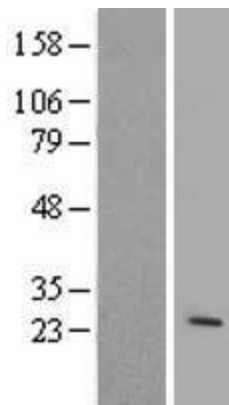
**Product images:**



Circular map for RC217012



HEK293T cells were transfected with the pCMV6-ENTRY control (Cat# [PS100001], Left lane) or pCMV6-ENTRY ARL4A (Cat# RC217012, Right lane) cDNA for 48 hrs and lysed. Equivalent amounts of cell lysates (5 ug per lane) were separated by SDS-PAGE and immunoblotted with anti-ARL4A (Cat# [TA811101])(1:500). Positive lysates [LY417098] (100ug) and [LC417098] (20ug) can be purchased separately from OriGene.



Western blot validation of overexpression lysate (Cat# [LY403938]) using anti-DDK antibody (Cat# [TA50011-100]). Left: Cell lysates from untransfected HEK293T cells; Right: Cell lysates from HEK293T cells transfected with [RC222154] using transfection reagent MegaTran 2.0 (Cat# [TT210002]).