

## Product datasheet for **RC217008**

### DEPDC7 (NM\_139160) Human Tagged ORF Clone

#### Product data:

Product Type:	Expression Plasmids
Product Name:	DEPDC7 (NM_139160) Human Tagged ORF Clone
Tag:	Myc-DDK
Symbol:	DEPDC7
Synonyms:	dj85M6.4; TR2
Vector:	pCMV6-Entry (PS100001)
E. coli Selection:	Kanamycin (25 ug/mL)
Cell Selection:	Neomycin



[View online »](#)

**ORF Nucleotide Sequence:**

>RC217008 representing NM\_139160  
 Red=Cloning site Blue=ORF Green=Tags(s)

TTTTGTAATACGACTCACTATAGGGCGGCCGGAATTCGTCGACTGGATCCGGTACCGAGGAGATCTGCC  
 GCC**CGATCGCC**

ATGAGAGGTTTATGTGAGTTCTACTGGCAGGAATTTGGCATAAAAGGTTTCAGTGTAGCTCAGAAGCCAT  
 TTGGAGCCACGTATGTATGGAGCAGCATCATAAACACTCTTCAAACACAAGTGGAAAGTAAAAACGAAG  
 GCACCGTTTAAAACGACATAATGACTGCTTTGTTGGTTCAGAAGCTGTGGATGTCATTTTTTCTCACCTA  
 ATTCAGAATAAGTATTTTGGTGTAGATATTCCTCGAGCCAAAGTGGTGGAGTGTGTCAAGCGCTTA  
 TGGACTACAAAGTATTTGAAGCAGTTCCAACAAAGTCTTTGGAAAAGACAAAAACCTACATTTGAAGA  
 TAGTAGTTGCAGCCTTTATAGATTCACCACAATACCTAACCAAGACAGTCAGTTAGGCAAAGAGAACAA  
 CTATATTCACCTGCCAGGTATGCAGATGCATTATTTAAGTCATCCGATATCAGATCAGCCAGTTTAGAGG  
 ACCTGTGGAAAACTGAGTTTAAAGCCTGCCAACTCCCCTCATGAAAATCTCTGCAACCTTGTCTCC  
 ACAAGTTATTAATGAAGTGTGGCAAGAAGAAACAATTGGGCGTCTACTACAACCTGTAGACCTTCCACTT  
 CTTGACTCCTTACTGAAACAGCAAGAGGCTGTACCTAAAATTCCTCAACCTAAGAGGCAGTCCACCATGG  
 TCAACAGCAGTAACTATCTGGATCGAGGGATTCTCAAGGCTTATAGTGACTCTCAGGAAGATGAGTGGCT  
 CTCGGCAGCAATTGACTGTTTAGAATACCTTCCAGACCAATGGTGGTGGAAATAAGCAGAAGCTTTCCT  
 GAGCAACCAGACCGAACAGACTTAGTGAAGAAGTCTGTTTGTATGCCATTGGCAGATATTACAGTAGTA  
 GGAACCTCTGTTAAATCACTTATCTGACGTTTATAATGGAATGCAGAACTCTTAGTGAATGGGAAGAC  
 GGAAATAGCTTTAGAAGTACCCAGCTCCTTCTAAAGCTTTTAGATTTCCAAAATAGAGAAGAATTTAGA  
 AGACTAGTATTTTATGGCTGTTGCAGCAATCCTTCTGAGTTTAAATTACAGAAAGAAAGTGACAACC  
 GAATGGTTGTGAAAAGGATATTCTCAAAGCTATTGTTGACAATAAAAAATTTTCCAAAGGCAAAACAGA  
 TCTTCTGGTACTCTTTTAAATGGATCATCAGAAGATGTTTTTAAAGATTCTGGAACCTACATAAAATTT  
 GTAAGTGTAAAGCTTATGGCCATACAGAACGGAAGAGATCCAAATAGAGATGCAGGATATATTTATTGCC  
 AGAGAATTGATCAACGTGACTATTCCAACAATACAGAGAAGACAACCAAGATGAGCTGTTGAATTTACT  
 AAAAACTTGTGAGGATTCAAACCTTCTGCCAAAGAGAAGAAAAATTTGCTAGGTCAATTCTATAAG  
 TGTCAACCAGACATCTTTATTGAGCATTTTGGAGAC

**ACGCGT**ACGCGGCGCTCGAGCAGAACTCATCTCAGAAGAGGATCTGGCAGCAATGATATCTGGATT  
 ACAAGGATGACGACGATAAGGTTTAA

**Protein Sequence:**

>RC217008 representing NM\_139160  
 Red=Cloning site Green=Tags(s)

MRGLCEFYWQEFGIKGFSAQKPFGATYVWSSIINTLQTQVEVKRRRHLKRHNDCFVGSEAVDVFISHL  
 IQNKYFGDVIDIPRAKVVVVCQALMDYKVFVAVPTKVFVKDKKPTFEDSSCSLYRFTTIPNQDSQLGKENK  
 LYSPARYADALFKSSDIRSASLEDLWENLSLKPANSPHVNISATLSPQVINEVWQEETIGRLLQLVLDLPL  
 LDSLLKQQEAVPKIPQPKRQSTMVNSSNYLDRGILKAYSQSDQDEWL SAAIDCLEYLPDQMVVEISRSFP  
 EQPDRTDLVKELLFDAIGRYSSREPLLNHLSDVHNGIAELLVNGKTEIALEATQLLLKLLDFQNRREFR  
 RLLYFMAVAANPSEFKLQKESDNRMVVKRIFSKAIVDNKNLSKGKTDLLVFLMDHQKDVFKIPGTLHKI  
 VSVKLMAIQNGRDPNRDAGYIYQRIQIDQRYDYSNNTEKTTKDELLNLLKTLDEDSKLSAKEKKLLGQFYK  
 CHPDIFIEHFGD

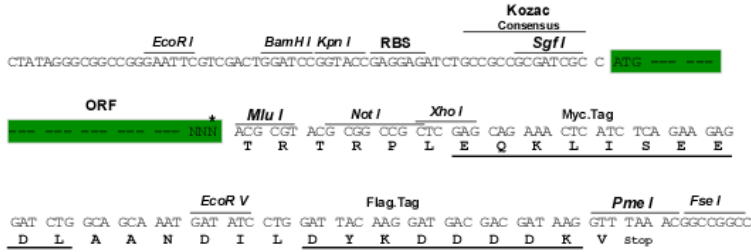
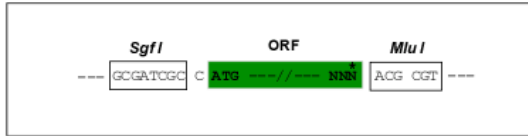
**TR**TRPLEQKLISEEDLAANDILDYKDDDDKV

**Restriction Sites:**

SgfI-MluI

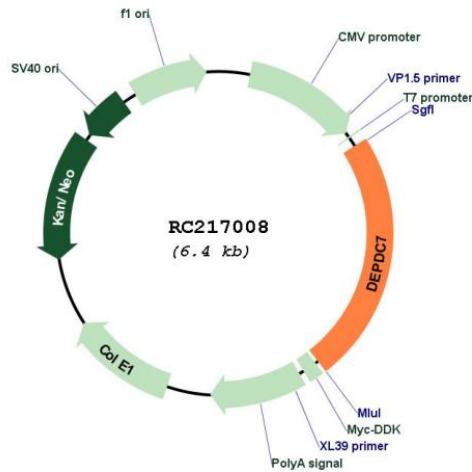
Cloning Scheme:

Cloning sites used for ORF Shutting:



\* The last codon before the Stop codon of the ORF

## Plasmid Map:



ACCN: NM\_139160

ORF Size: 1506 bp

OTI Disclaimer: The molecular sequence of this clone aligns with the gene accession number as a point of reference only. However, individual transcript sequences of the same gene can differ through naturally occurring variations (e.g. polymorphisms), each with its own valid existence. This clone is substantially in agreement with the reference, but a complete review of all prevailing variants is recommended prior to use. [More info](#)

OTI Annotation: This clone was engineered to express the complete ORF with an expression tag. Expression varies depending on the nature of the gene.

RefSeq: [NM\\_139160.2](#), [NP\\_631899.2](#)

RefSeq Size: 2013 bp

RefSeq ORF: 1509 bp

Locus ID: 91614  
MW: 57.7 kDa