

Product datasheet for RC217007

OR1A2 (NM_012352) Human Tagged ORF Clone

Product data:

Product Type:	Expression Plasmids
Product Name:	OR1A2 (NM_012352) Human Tagged ORF Clone
Tag:	Myc-DDK
Symbol:	OR1A2
Synonyms:	OR17-6
Vector:	pCMV6-Entry (PS100001)
E. coli Selection:	Kanamycin (25 ug/mL)
Cell Selection:	Neomycin
ORF Nucleotide Sequence:	>RC217007 ORF sequence Red=Cloning site Blue=ORF Green=Tags(s)

TTTTGTAATACGACTCACTATAGGGCGCCGGGAATTCGTCGACTGGATCCGGTACCGAGGAGATCTGCC
GCCGCGATCGCC

ATGAAGAAAGAAAATCAATCCTTTAACCTGGATTTTATTCTCCTGGGAGTTACTAGTCAGCAAGAACAGA
ATAATGTCTTCTTTGTGATTTTTTTGTGCATTTACCCCATCACACTGACTGGAAATCTGCTCATCATCTT
GGCCATCTGTGCTGACATTCGCCTTCAACCCCATGTATTTTCTCCTTGCCAACCTCTCCTTGGTTGAC
ATCATCTTCTCATCCGTAACCATCCCTAAGGTGCTGGCCAACCATCTCTTGGGCAGCAAGTTCATCTCCT
TTGGGGGATGCCTAATGCAGATGTATTTTCATGATAGCCTTGCCCAAGGCAGACAGCTATACCTTGGCTGC
AATGGCATAACGATCGAGCTGTGGCCATCAGCTGCCCACTTCATTACACAACAATTATGAGTCCACGGTCT
TGTATCCTGCTTATTGCTGGGTCTTGGGTGATTGGAAACACCAGTGCTCTCCCCCACTCTGCTCACAG
CTAGTTTGTCTTCTGTGGCAACCAGGAAGTAGCCAATTTCTACTGTGACATTATGCCTTGTGAAAGTT
GTCCTGTTCTGACGTCCACTTTAATGTGAAGATGATGTACCTAGGGGTCGGCGTTTTCTCTTTGCCATTA
CTATGCATCATTGTCTCCTATGTTCAAGTCTTTCCACAGTCTTCCAAGTCCATCTACCAAGAGTCTAT
TCAAAGCCTTCTGCACCTGTGGCTCCACCTCACAGTTGTTTTTTATATTATGGTACAACGATGGGCAT
GTATTTCTGCCCTCTGACCAGTTACAGCCCAAAGATGCAGTGATAACTGTGATGTATGTGGCAGTGACC
CCAGCATTAAATCCTTTTCATCTATAGTCTGAGAAATTGGGATATGAAGGCAGCCCTACAGAACTCTTCA
GCAAGAGAATCTCCTCA

ACGCGTACGCGGCCGCTCGAGCAGAAACTCATCTCAGAAGAGGATCTGGCAGCAATGATATCCTGGATT
ACAAGGATGACGACGATAAGGTTTAA



[View online »](#)

Protein Sequence: >RC217007 protein sequence
 Red=Cloning site Green=Tags(s)

MKKNQSFNLDIFLLGVTSQQEQNNVFFVIFLCIYPITLTGNLLIILAICADIRLHNPYFLLANLSLVD
 IIFSSVTIPKVLANHLLGSKFISFGGLMQMYFMIALAKADSYTLAAMAYDRAVAISCPLHYTTIMSPRS
 CILLIAGSWVIGNTSALPHTLLTASLFCGNQEVANFYCDIMPLLKLSGSDVHFNVKMMYLGVGVFSLPL
 LCIIIVSYVQVVFSTVFPSTKSLFKAFCTCGSHLTVVFLYYGTTMGMYFCPLTSYSPKDAVITVMYVAVT
 PALNPFIIYSLRNWDMKAALQKLFKRISS

TRTRPLEQKLISEEDLAANDILDYKDDDDKV

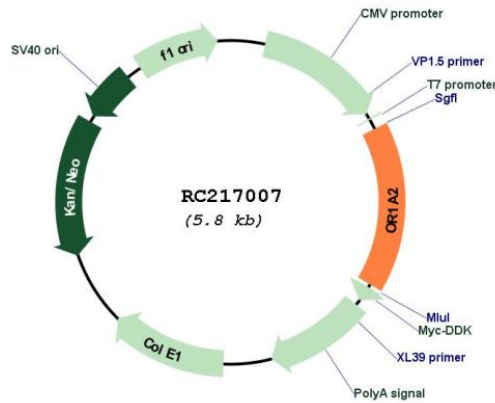
Chromatograms: https://cdn.origene.com/chromatograms/mk6474_d11.zip

Restriction Sites: SgfI-MluI

Cloning Scheme:



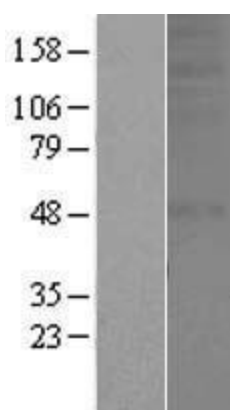
Plasmid Map:



ACCN: NM_012352

ORF Size:	927 bp
OTI Disclaimer:	The molecular sequence of this clone aligns with the gene accession number as a point of reference only. However, individual transcript sequences of the same gene can differ through naturally occurring variations (e.g. polymorphisms), each with its own valid existence. This clone is substantially in agreement with the reference, but a complete review of all prevailing variants is recommended prior to use. More info
OTI Annotation:	This clone was engineered to express the complete ORF with an expression tag. Expression varies depending on the nature of the gene.
RefSeq:	NM_012352.1 , NM_012352.2 , NP_036484.1
RefSeq Size:	930 bp
RefSeq ORF:	930 bp
Locus ID:	26189
Protein Families:	Druggable Genome, Transmembrane
Protein Pathways:	Olfactory transduction
MW:	34.3 kDa
Gene Summary:	Olfactory receptors interact with odorant molecules in the nose, to initiate a neuronal response that triggers the perception of a smell. The olfactory receptor proteins are members of a large family of G-protein-coupled receptors (GPCR) arising from single coding-exon genes. Olfactory receptors share a 7-transmembrane domain structure with many neurotransmitter and hormone receptors and are responsible for the recognition and G protein-mediated transduction of odorant signals. The olfactory receptor gene family is the largest in the genome. The nomenclature assigned to the olfactory receptor genes and proteins for this organism is independent of other organisms. [provided by RefSeq, Jul 2008]

Product images:



Western blot validation of overexpression lysate (Cat# [LY415807]) using anti-DDK antibody (Cat# [TA50011-100]). Left: Cell lysates from untransfected HEK293T cells; Right: Cell lysates from HEK293T cells transfected with RC217007 using transfection reagent MegaTran 2.0 (Cat# [TT210002]).