

Product datasheet for RC217000

Apolipoprotein L 1 (APOL1) (NM_145343) Human Tagged ORF Clone

Product data:

Product Type:	Expression Plasmids
Product Name:	Apolipoprotein L 1 (APOL1) (NM_145343) Human Tagged ORF Clone
Tag:	Myc-DDK
Symbol:	Apolipoprotein L 1
Synonyms:	APO-L; APOL; APOL-I; FSGS4
Mammalian Cell Selection:	Neomycin
Vector:	pCMV6-Entry (PS100001)
E. coli Selection:	Kanamycin (25 ug/mL)
ORF Nucleotide Sequence:	>RC217000 representing NM_145343 Red=Cloning site Blue=ORF Green=Tags(s)

TTTTGTAATACGACTCACTATAGGGCGGCCGGAATTCGTCGACTGGATCCGGTACCGAGGAGATCTGCC
GCC**CGATCGCC**

ATGAGATTCAAAAGCCACACTGTGGAATTGAGGAGGCCCTGCAGCGACATGGAGGGAGCTGCTTTGCTGA
GAGTCTCTGTCTCTGCATCTGGATGAGTGCACTTTTCTTGGTGTGGGAGTGAGGGCAGAGGAAGCTGG
AGCGAGGGTGAACAAAACGTTCCAAGTGGGACAGATACTGGAGATCCTCAAAGTAAGCCCTCGGTGAC
TGGGCTGCTGGCACCATGGACCCAGAGAGCAGTATCTTTATTGAGGATGCCATTAAGTATTTCAAGGAAA
AAGTGAGCACACAGAATCTGCTACTCCTGCTGACTGATAATGAGGCCTGGAACGGATTCTGGCTGCTGC
TGAAGTCCCAGGAATGAGGCAGATGAGCTCCGTAAAGCTCTGGACAACCTTGAAGACAAATGATCATG
AAAGACAAAACTGGCACGATAAAGGCCAGCAGTACAGAACTGGTTTCTGAAAGAGTTTCTCGGTTGA
AAAGTGAGCTTGAGGATAACATAAGAAGGCTCCGTGCCCTTGAGATGGGGTTGAGAAGTCCACAAAGG
CACCACATCGCCAATGTGGTGTCTGGCTCTCAGCATTTCTCTGGCATCCTGACCCTCGTCGGCATG
GGTCTGGCACCCTTACAGAGGGAGGCAGCCTTGTACTCTTGGAACTGGGATGGAGTTGGGAATCACAG
CCGCTTGGACCGGATTACCAGCAGTACCATGGACTACGAAAGAAGTGGTGGACACAAGCCCAAGCCCA
CGACCTGGTCAACAAAAGCCTTGACAAATTGAAGGAGGTGAGGGAGTTTTTGGGTGAGAACATATCCAAC
TTTCTTTCTTAGCTGGCAATACTTACCAACTCACAGAGGCATTGGGAAGGACATCCGTGCCCTCAGAG
GAGCCAGAGCCAATCTTCAGTCAGTACCGCATGCCTCAGCCTCACGCCCCGGGTCACTGAGCCAATCTC
AGCTGAAAGCGGTGAACAGGTGGAGAGGGTTAATGAACCCAGCATCCTGGAAATGAGCAGAGGAGTCAAG
CTCACGGATGTGGCCCTGTAAGCTTCTTTCTGTGCTGGATGTAGTCTACCTCGTGTACGAATCAAAGC
ACTTACATGAGGGGGCAAAGTCAGAGACAGCTGAGGAGCTGAAGAAGGTGGCTCAGGAGCTGGAGGAGAA
GCTAAACATTCTCAACAATAATTATAAGATTCTGCAGGCCGACCAAGAAGTCTG

ACGCGTACGCGGCCGCTCGAGCAGAACTCATCTCAGAAGAGGATCTGGCAGCAAATGATATCCTGGATT
ACAAGGATGACGACGATAAGGTTTAA



[View online >](#)

Protein Sequence: >RC217000 representing NM_145343
Red=Cloning site Green=Tags(s)

MRFKSHTVELRRPCSDMEGAALLRVSVLCIWM SALFLGVGVRAEEAGARVQQNVPSGTDGDPQSKPLGD
 WAAGTMDPESSIFIEDAIKYFKEKVSTQNL LLLLDNEAWNGFVAAAELPRNEADELRKALDNLARQMIM
 KDKNWHDKGQQYRNWFLKEFPRLKSELEDNIRRLRALADGVQKVHKGTTIANVVSGLSISSGILTLVGM
 GLAPFTEGGSLV LLEPGMELGITAALGTISSTMDYGKKWWTQAQAHDLVIKSLDKLKEVREFLGENISN
 FL SLAGNTYQLTRGIGKDIRALRRARANLQSVPHASASRPRVTEPI SAESGEQVERVNEPSILEMSRGVK
 L TDVAPVSFFLVLDVVYLVYESKHLHEGAKSETAEELKKVAQELEEKLNL LNNNYKILQADQEL

TRTRPLEQKLISEEDLAANDILDYKDDDDKV

Chromatograms: https://cdn.origene.com/chromatograms/mk8058_b08.zip

Restriction Sites: SgfI-MluI

Cloning Scheme:



* The last codon before the Stop codon of the ORF

ACCN: NM_145343

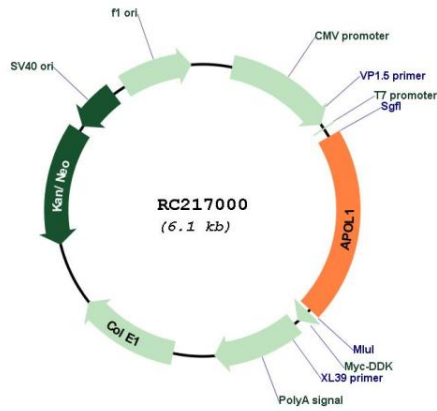
ORF Size: 1242 bp

OTI Disclaimer: Due to the inherent nature of this plasmid, standard methods to replicate additional amounts of DNA in E. coli are highly likely to result in mutations and/or rearrangements. Therefore, OriGene does not guarantee the capability to replicate this plasmid DNA. Additional amounts of DNA can be purchased from OriGene with batch-specific, full-sequence verification at a reduced cost. Please contact our customer care team at custsupport@origene.com or by calling 301.340.3188 option 3 for pricing and delivery.

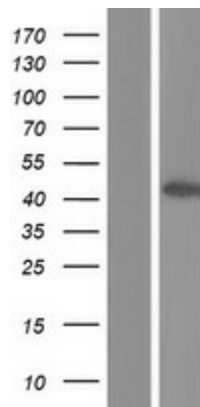
The molecular sequence of this clone aligns with the gene accession number as a point of reference only. However, individual transcript sequences of the same gene can differ through naturally occurring variations (e.g. polymorphisms), each with its own valid existence. This clone is substantially in agreement with the reference, but a complete review of all prevailing variants is recommended prior to use. [More info](#)

OTI Annotation:	This clone was engineered to express the complete ORF with an expression tag. Expression varies depending on the nature of the gene.
Components:	The ORF clone is ion-exchange column purified and shipped in a 2D barcoded Matrix tube containing 10ug of transfection-ready, dried plasmid DNA (reconstitute with 100 ul of water).
Reconstitution Method:	<ol style="list-style-type: none">1. Centrifuge at 5,000xg for 5min.2. Carefully open the tube and add 100ul of sterile water to dissolve the DNA.3. Close the tube and incubate for 10 minutes at room temperature.4. Briefly vortex the tube and then do a quick spin (less than 5000xg) to concentrate the liquid at the bottom.5. Store the suspended plasmid at -20°C. The DNA is stable for at least one year from date of shipping when stored at -20°C.
RefSeq:	NM_145343.2 , NP_663318.1
RefSeq Size:	3010 bp
RefSeq ORF:	1245 bp
Locus ID:	8542
Cytogenetics:	22q12.3
Protein Families:	Secreted Protein, Transmembrane
MW:	41.1 kDa
Gene Summary:	This gene encodes a secreted high density lipoprotein which binds to apolipoprotein A-I. Apolipoprotein A-I is a relatively abundant plasma protein and is the major apoprotein of HDL. It is involved in the formation of most cholesteryl esters in plasma and also promotes efflux of cholesterol from cells. This apolipoprotein L family member may play a role in lipid exchange and transport throughout the body, as well as in reverse cholesterol transport from peripheral cells to the liver. Several different transcript variants encoding different isoforms have been found for this gene. [provided by RefSeq, Nov 2008]

Product images:



Circular map for RC217000



Western blot validation of overexpression lysate (Cat# [LY407931]) using anti-DDK antibody (Cat# [TA50011-100]). Left: Cell lysates from untransfected HEK293T cells; Right: Cell lysates from HEK293T cells transfected with RC217000 using transfection reagent MegaTran 2.0 (Cat# [TT210002]).