

Product datasheet for RC216995L1

Gastrokine 2 (GKN2) (NM_182536) Human Tagged Lenti ORF Clone

Product data:

| | |
|---------------------------|----------------------------------------------------------------|
| Product Type: | Expression Plasmids |
| Product Name: | Gastrokine 2 (GKN2) (NM_182536) Human Tagged Lenti ORF Clone |
| Tag: | Myc-DDK |
| Symbol: | Gastrokine 2 |
| Synonyms: | BRICD1B; GDDR; PRO813; TFIZ1; VLT1465 |
| Mammalian Cell Selection: | None |
| Vector: | pLenti-C-Myc-DDK (PS100064) |
| E. coli Selection: | Chloramphenicol (34 ug/mL) |
| ORF Nucleotide Sequence: | The ORF insert of this clone is exactly the same as(RC216995). |
| Restriction Sites: | SgfI-MluI |
| Cloning Scheme: | |

Cloning sites used for ORF Shuttling:



* The last codon before the Stop codon of the ORF.

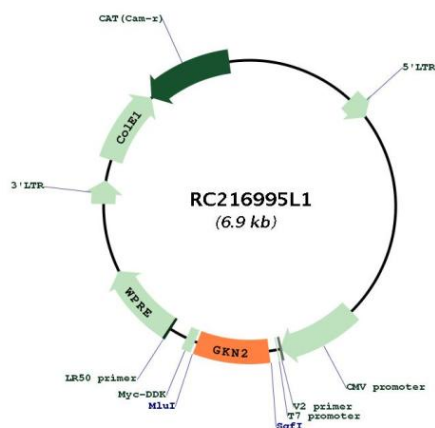
| | |
|-----------|-----------|
| ACCN: | NM_182536 |
| ORF Size: | 552 bp |



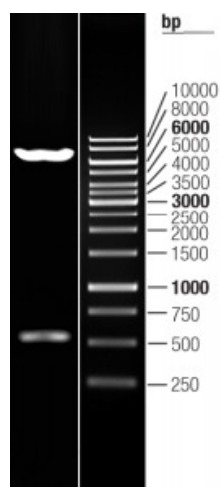
[View online »](#)

| | |
|-------------------------------|-------------------------------------------------------------------------------------------------------------------------------------------------------------------------------------------------------------------------------------------------------------------------------------------------------------------------------------------------------------------------------------------------------------------------------------------------------------------------------------------------------------------------|
| OTI Disclaimer: | The molecular sequence of this clone aligns with the gene accession number as a point of reference only. However, individual transcript sequences of the same gene can differ through naturally occurring variations (e.g. polymorphisms), each with its own valid existence. This clone is substantially in agreement with the reference, but a complete review of all prevailing variants is recommended prior to use. More info |
| OTI Annotation: | This clone was engineered to express the complete ORF with an expression tag. Expression varies depending on the nature of the gene. |
| Components: | The ORF clone is ion-exchange column purified and shipped in a 2D barcoded Matrix tube containing 10ug of transfection-ready, dried plasmid DNA (reconstitute with 100 ul of water). |
| Reconstitution Method: | <ol style="list-style-type: none"> 1. Centrifuge at 5,000xg for 5min. 2. Carefully open the tube and add 100ul of sterile water to dissolve the DNA. 3. Close the tube and incubate for 10 minutes at room temperature. 4. Briefly vortex the tube and then do a quick spin (less than 5000xg) to concentrate the liquid at the bottom. 5. Store the suspended plasmid at -20°C. The DNA is stable for at least one year from date of shipping when stored at -20°C. |
| RefSeq: | NM_182536.2 |
| RefSeq Size: | 826 bp |
| RefSeq ORF: | 555 bp |
| Locus ID: | 200504 |
| UniProt ID: | Q86XP6 |
| Cytogenetics: | 2p13.3 |
| Protein Families: | Secreted Protein |
| MW: | 20.3 kDa |
| Gene Summary: | The secretory protein encoded by this gene is produced in gastric surface mucous cells, where it can bind trefoil factor family peptide 1 or gastrokine-1. This gene may be a tumor suppressor gene, as its expression is markedly decreased in gastric cancer tissues. The encoded protein interacts with gastrokine-1 and regulates homeostasis of the gastric mucosa. [provided by RefSeq, Dec 2015] |

Product images:



Circular map for RC216995L1



Double digestion of RC216995L1 using SgfI and MluI