

Product datasheet for RC216995

Gastrokine 2 (GKN2) (NM_182536) Human Tagged ORF Clone

Product data:

Product Type:	Expression Plasmids
Product Name:	Gastrokine 2 (GKN2) (NM_182536) Human Tagged ORF Clone
Tag:	Myc-DDK
Symbol:	Gastrokine 2
Synonyms:	BRICD1B; GDDR; PRO813; TFIZ1; VLT1465
Mammalian Cell Selection:	Neomycin
Vector:	pCMV6-Entry (PS100001)
E. coli Selection:	Kanamycin (25 ug/mL)
ORF Nucleotide Sequence:	>RC216995 representing NM_182536 Red=Cloning site Blue=ORF Green=Tags(s)

TTTGTAAATACGACTCACTATAGGGCGGCCGGAATTCGTCGACTGGATCCGGTACCGAGGAGATCTGCC
 GCCGCGATCGCC

ATGAAATACTTGTGGCATTCTGGTGGTGTGACCATCTTTGGGATACAATCTCATGGATACGAGGTTT
 TTAACATCATCAGCCCAAGCAACAATGGTGGAATGTTCCAGGAGACAGTGACAATTGATAATGAAAAA
 TACCGCCATCATTAAATCCATGCAGGATCATGCTCTTCTACCACAATTTTCTGACTATAACATGGCTAC
 ATTGCATCCAGGGTGTCTCCCGAAGAGCCTGCTTATCCTGAAGATGGACCATCAGAACATCCCTCCTC
 TGAACAATCTCCAATGGTACATCTATGAGAAACAGGCTCTGGACAACATGTTCTCCAGCAATACACCTG
 GGTCAAGTACAACCTCTGGAGTCTCTGATCAAAGACGTGGATTGGTTCCTGCTTGGGTACCCATTGAG
 AAACCTCTGCAACATATCCCTTTGTATAAGGGGGAAGTGTTGAAAACACACATAATGTCGGTGTGGAG
 GCTGTGCAAAGGCTGGGCTCTGGGCATCTTGGGAATTCAATCTGTGCAGACATTTCATGTT

ACGCGTACGCGGCCGCTCGAGCAGAACTCATCTCAGAAGAGGATCTGGCAGCAAATGATATCCTGGATT
 ACAAGGATGACGACGATAAGGTTTAA

Protein Sequence:	>RC216995 representing NM_182536 Red=Cloning site Green=Tags(s)
-------------------	--

MKILVAFLLVLTIFGIQSHGYEVFNIIISPSNNGGNVQETVTIDNEKNTAIIINHAGSCSSTTIFDYKHGY
 IASRVLSRRACFILKMDHQNIPLNNLQWYIYEKQALDNMFSSKYTWVKYNPLESLIKDWDWFLGSPIE
 KLCKHIPLYKGEVVENTHNVGAGGCAKAGLLGILGISICADIV

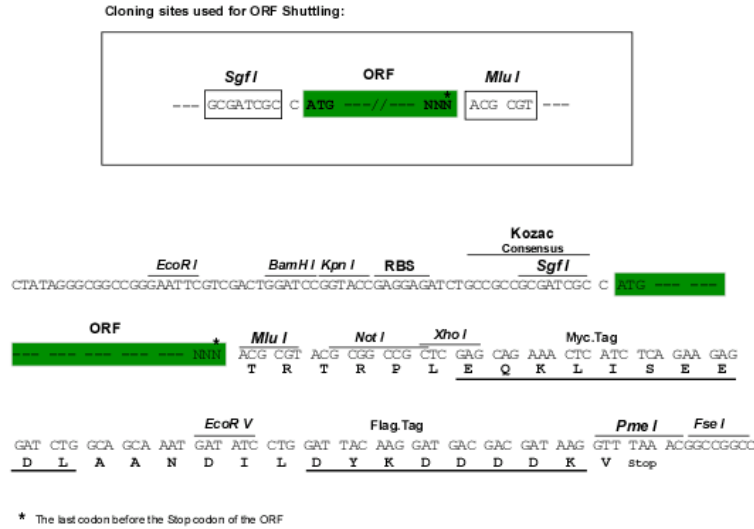
TRTRPLEQKLISEEDLAANDILDYKDDDDKV

Chromatograms:	https://cdn.origene.com/chromatograms/mk6115_e10.zip
----------------	---


[View online »](#)

Restriction Sites: SgfI-MluI

Cloning Scheme:



ACCN: NM_182536

ORF Size: 552 bp

OTI Disclaimer: The molecular sequence of this clone aligns with the gene accession number as a point of reference only. However, individual transcript sequences of the same gene can differ through naturally occurring variations (e.g. polymorphisms), each with its own valid existence. This clone is substantially in agreement with the reference, but a complete review of all prevailing variants is recommended prior to use. [More info](#)

OTI Annotation: This clone was engineered to express the complete ORF with an expression tag. Expression varies depending on the nature of the gene.

Components: The ORF clone is ion-exchange column purified and shipped in a 2D barcoded Matrix tube containing 10ug of transfection-ready, dried plasmid DNA (reconstitute with 100 ul of water).

Reconstitution Method:

1. Centrifuge at 5,000xg for 5min.
2. Carefully open the tube and add 100ul of sterile water to dissolve the DNA.
3. Close the tube and incubate for 10 minutes at room temperature.
4. Briefly vortex the tube and then do a quick spin (less than 5000xg) to concentrate the liquid at the bottom.
5. Store the suspended plasmid at -20°C. The DNA is stable for at least one year from date of shipping when stored at -20°C.

Note: Plasmids are not sterile. For experiments where strict sterility is required, filtration with 0.22um filter is required.

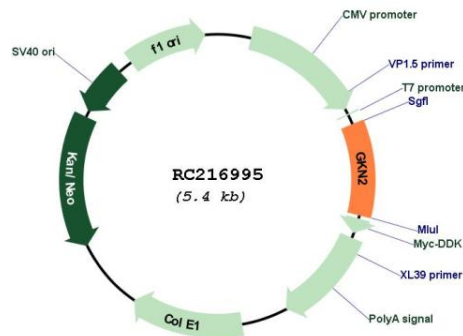
RefSeq: [NM_182536.3](#)

RefSeq Size: 826 bp

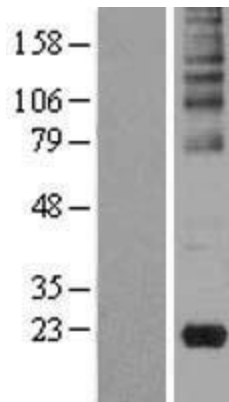
RefSeq ORF: 555 bp

Locus ID:	200504
UniProt ID:	Q86XP6
Cytogenetics:	2p13.3
Protein Families:	Secreted Protein
MW:	20.3 kDa
Gene Summary:	The secretory protein encoded by this gene is produced in gastric surface mucous cells, where it can bind trefoil factor family peptide 1 or gastrokine-1. This gene may be a tumor suppressor gene, as its expression is markedly decreased in gastric cancer tissues. The encoded protein interacts with gastrokine-1 and regulates homeostasis of the gastric mucosa. [provided by RefSeq, Dec 2015]

Product images:



Circular map for RC216995



Western blot validation of overexpression lysate (Cat# [LY403636]) using anti-DDK antibody (Cat# [TA50011-100]). Left: Cell lysates from untransfected HEK293T cells; Right: Cell lysates from HEK293T cells transfected with RC216995 using transfection reagent MegaTran 2.0 (Cat# [TT210002]).