

## Product datasheet for RC216985

### CHST13 (NM\_152889) Human Tagged ORF Clone

#### Product data:

Product Type:	Expression Plasmids
Product Name:	CHST13 (NM_152889) Human Tagged ORF Clone
Tag:	Myc-DDK
Symbol:	CHST13
Synonyms:	C4ST3
Mammalian Cell Selection:	Neomycin
Vector:	pCMV6-Entry (PS100001)
E. coli Selection:	Kanamycin (25 ug/mL)
ORF Nucleotide Sequence:	>RC216985 ORF sequence Red=Cloning site Blue=ORF Green=Tags(s)

TTTTGTAATACGACTCACTATAGGGCGGCCGGGAATTCGTCGACTGGATCCGGTACCGAGGAGATCTGCC  
GCC**CGCATCGC**

ATGGGGAGGGCGTGTGCCGGCGGCGCTGCTGGCGGCCGCTGTCTGGGCGCCGCGCTCCTGCTCCTAT  
GCGCCGCGCCCCGCTCCCTGCGCCCGCATTTGAAACAGAGCCCTGGGCTCCAGCTGGCTTGGTGGGA  
GAAGAGAAGCCCCCTGCAGAAGCTCTATGACCTGGATCAGGACCCGCGCTCGACCCTGGCGAAGGTGCAC  
CGTCAGCGGCGGACCTGCTGAACAGCGCCTGTAGCCGCCACTCACGCCGCGAGCGCTGCTACAGCCGG  
AGGACCTGCGGCACGTGCTGGTGGACGACGCGCATGGCCTGCTCTACTGCTACGTGCCAAGGTGGCCTG  
CACCAACTGGAAGCGCGTGTGCTGGCGCTGAGCGGCCAAGCCCGCGGCGACCCGCGGCCATCTCCGCG  
CAAGAGGCGCACGCGCCTGGCCGCTGCCCTCACTGGCCGACTTCAGCCCGCCGAGATCAACCGCGCC  
TGCGCGCCTACTTGGCCTTCTGTTCTGTCGCGGAGCCCTTCGAGCGCCTGGCATCGGCTTACCGCAACA  
GCTCGCGCGCCCCACAGCGCCGCTTCCAGAGGCGCTACGGTGCACGCATCGTTACGCGCTGCGGCCG  
CGCGCGCTCCCCGACGCCCGGCCCGCGCCACGACGTGCGCTTCGCGGAGTTCTGGCCTACCTGCTGG  
ACCCGCGCACGCGCGGTGAGGAGCCCTCAACGAGCACTGGGAGCGCGCGCACGCGCTCTGCCACCCGTG  
TCGCCTCCGCTACGACGTCGTGGCAAGTTCGAGACACTGGTGGAGGACGCGCCCTTCGTGCTGGGCCTG  
CGGGCGCATCCGACCTGAGCTTCCCTGGGCGCCGCGGCCCGGGGAGCCCGCCCTCCGCGACCTGG  
CAGCGCGCCTCTCCGGGACATCAGCCCTTCTACCAGCAGCGCCTCTTCGACCTCTACAAGATGGACTT  
CCTGCTTTTCAACTACTCCGCCCTCCTACCTGCGGCTGCTC

**ACGCGT**ACGCGGCCGCTCGAGCAGAACTCATCTCAGAAGAGGATCTGGCAGCAAATGATATCCTGGATT  
ACAAGGATGACGACGATAAGGTTTAA



[View online »](#)

**Protein Sequence:** >RC216985 protein sequence  
Red=Cloning site Green=Tags(s)

MGRRCRRRVLAACLGAAALLLCAAPRSLRPAFGNRLGSSWLGG EKRSPLQKLYDL DQDPRSTLAKVH  
 RQRDLLNSACSRHSRRQRLQPEDLRHVLVDDAHGLLYCVVPKVACTNWKRVLLALSGQARGDPRAISA  
 QEAHAPGRLPSLADFSPAEINRRLRAYLAFLFVREPFERLASAYRNKLARPYSAAFQRRYGARIVQRLRP  
 RALPDARARGHDVRF AEFLAYLLDPRTRREEPFNEHWERAHALCHPCRLRYDVVGKFETLVEDAAFVLGL  
 AGASDLSFPGPPRPRGAAASRDLAARLFRDISPFYQQLFDLYKMDFFLLFNYSAPSYLRLL

TRTRPLEQKLISEEDLAANDILDYKDDDDKV

**Chromatograms:** [https://cdn.origene.com/chromatograms/mk6670\\_d04.zip](https://cdn.origene.com/chromatograms/mk6670_d04.zip)

**Restriction Sites:** SgfI-MluI

**Cloning Scheme:**

Cloning sites used for ORF Shuttling:



\* The last codon before the Stop codon of the ORF

**ACCN:** NM\_152889

**ORF Size:** 1023 bp

**OTI Disclaimer:** The molecular sequence of this clone aligns with the gene accession number as a point of reference only. However, individual transcript sequences of the same gene can differ through naturally occurring variations (e.g. polymorphisms), each with its own valid existence. This clone is substantially in agreement with the reference, but a complete review of all prevailing variants is recommended prior to use. [More info](#)

**OTI Annotation:** This clone was engineered to express the complete ORF with an expression tag. Expression varies depending on the nature of the gene.

**Components:** The ORF clone is ion-exchange column purified and shipped in a 2D barcoded Matrix tube containing 10ug of transfection-ready, dried plasmid DNA (reconstitute with 100 ul of water).

**Reconstitution Method:**

1. Centrifuge at 5,000xg for 5min.
2. Carefully open the tube and add 100ul of sterile water to dissolve the DNA.
3. Close the tube and incubate for 10 minutes at room temperature.
4. Briefly vortex the tube and then do a quick spin (less than 5000xg) to concentrate the liquid at the bottom.
5. Store the suspended plasmid at -20°C. The DNA is stable for at least one year from date of shipping when stored at -20°C.

**RefSeq:** [NM\\_152889.3](#)

**RefSeq Size:** 1792 bp

**RefSeq ORF:** 1026 bp

**Locus ID:** 166012

**UniProt ID:** [Q8NET6](#)

**Cytogenetics:** 3q21.3

**Domains:** Sulfotransfer2

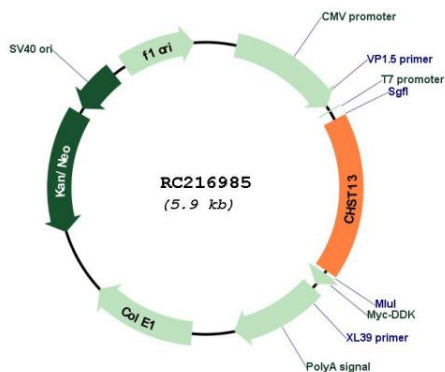
**Protein Families:** Transmembrane

**Protein Pathways:** Chondroitin sulfate biosynthesis, Sulfur metabolism

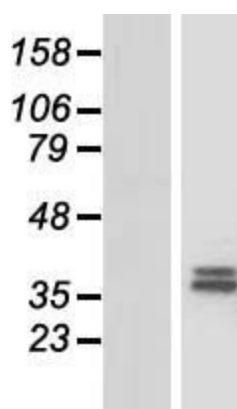
**MW:** 38.9 kDa

**Gene Summary:** The protein encoded by this gene belongs to the sulfotransferase 2 family. It is localized to the golgi membrane, and catalyzes the transfer of sulfate to the C4 hydroxyl of beta-1,4-linked N-acetylgalactosamine (GalNAc) flanked by glucuronic acid residue in chondroitin. Chondroitin sulfate constitutes the predominant proteoglycan present in cartilage and is distributed on the surfaces of many cells and extracellular matrices. [provided by RefSeq, Aug 2011]

### Product images:



Circular map for RC216985



Western blot validation of overexpression lysate (Cat# [LY407254]) using anti-DDK antibody (Cat# [TA50011-100]). Left: Cell lysates from untransfected HEK293T cells; Right: Cell lysates from HEK293T cells transfected with RC216985 using transfection reagent MegaTran 2.0 (Cat# [TT210002]).