

Product datasheet for RC216982

CD62L (SELL) (NM_000655) Human Tagged ORF Clone

Product data:

Product Type:	Expression Plasmids
Product Name:	CD62L (SELL) (NM_000655) Human Tagged ORF Clone
Tag:	Myc-DDK
Symbol:	CD62L
Synonyms:	CD62L; LAM1; LECAM1; LEU8; LNHR; LSEL; LYAM1; PLNHR; TQ1
Mammalian Cell Selection:	Neomycin
Vector:	pCMV6-Entry (PS100001)
E. coli Selection:	Kanamycin (25 ug/mL)
ORF Nucleotide Sequence:	>RC216982 representing NM_000655 Red=Cloning site Blue=ORF Green=Tags(s)

TTTTGTAATACGACTCACTATAGGGCGGCCGGAATTCGTCGACTGGATCCGGTACCGAGGAGATCTGCC
GCC**CGATCGCC**

ATGATATTTCCATGGAAATGTCAGAGCACCCAGAGGGACTTATGGAACATCTTCAAGTTGTGGGGTGGAC
CAATGCTCTGTTGTGATTCCTGGCACATCATGGAACCGACTGCTGGACTTACCATTATTCTGAAAAACC
CATGAACTGGCAAAGGGCTAGAAGATTCTGCCGAGACAATTACACAGATTTAGTTGCCATACAAAACAAG
GCGGAAATGAGTATCTGGAGAAGACTCTGCCTTTCAGTCGTTCTTACTACTGGATAGGAATCCGGAAGA
TAGGAGGAATATGGACGTGGGTGGGAACCAACAAATCTTACTGAAGAAGCAGAGAAGTGGGGAGATGG
TGAGCCCAACAACAAGAAGAACAAGGAGGACTGCGTGGAGATCTATATCAAGAGAAAACAAGATGCAGGC
AAATGGAACGATGACGCCTGCCACAAACTAAAGGCAGCCCTCTGTTACACAGCTTCTTGCCAGCCCTGGT
CATGCAGTGGCCATGGAGAATGTGTAGAAATCATCAATAATTACACCTGCAACTGTGATGTGGGGTACTA
TGGGCCCCAGTGTGAGTTGTGATTCAGTGTGAGCCTTTGGAGGCCCCAGAGCTGGGTACCATGGACTGT
ACTCACCTTTGGGAACTTCAGCTTCAGCTCACAGTGTGCCTTCAGCTGCTCTGAAGGAACAACTTAA
CTGGGATTGAAGAAACCCTGTGGACCATTTGGAACTGGTTCATCTCCAGAACCAACCTGTCAAGTGAT
TCAGTGTGAGCCTCTATCAGCACCAGATTTGGGGATCATGAACTGTAGCCATCCCTGGCCAGCTTCAGC
TTTACCTCTGCATGTACCTTCATCTGCTCAGAAGGAAGTGAATTAATTGGGAAGAAGAAACCATTTGTG
AATCATCTGGAATCTGGTCAAATCTAGTCCAATATGTCAAAAATTGGACAAAAGTTTCTCAATGATTAA
GGAGGGTATTATAACCCCTCTTCATTCCAGTGGCAGTCATGGTTACTGCATTCTCTGGTTGGCATT
ATCATTGGCTGGCAAGGAGATTAATAAAGGCAAGAAATCCAAGAGAAGTATGAATGACCCATAT

ACGCGTACGCGGCCGCTCGAGCAGAAACTCATCTCAGAAGAGGATCTGGCAGCAAATGATATCCTGGATT
ACAAGGATGACGACGATAAGGTTTAA



[View online »](#)

Protein Sequence: >RC216982 representing NM_000655
Red=Cloning site Green=Tags(s)

MIFPWKCQSTQRDLWNIFKLWGWMLCCDFLAHHGTDWCWYHYSEKPMNWQRARRFCRDNYTDLVAIQNK
 AEIEYLEKTLPF SRSYYWIGIRKIGGIWTWVG TNKSLTEEAENWGDGEPNNKKNKEDCVEIYIKRNKDAG
 KWND DACHKLKAALCYTASCQPWSCSGHGECVEIINNYTCNCDVGYYPQCQFVIQCEPLEAPELGTMDC
 THPLGNFSFSSQCAFSCSEGTNLTGIEETTCGPFGNWSSPEPTCQVIQCEPLSAPDLGIMNC SHPLASFS
 FTSACTFICSEGTELIGKKK TICSSSGIWSNPSPICQKLDKSF SMIKEGDYNPLFIPVAVMVTAFSGLAF
 IWLARRLKKGKKS KRSMNDPY

TRTRPLEQKLISEEDLAANDILDYKDDDDKV

Chromatograms: https://cdn.origene.com/chromatograms/mk6106_f12.zip

Restriction Sites: SgfI-MluI

Cloning Scheme:



* The last codon before the Stop codon of the ORF

ACCN: NM_000655

ORF Size: 1116 bp

OTI Disclaimer: The molecular sequence of this clone aligns with the gene accession number as a point of reference only. However, individual transcript sequences of the same gene can differ through naturally occurring variations (e.g. polymorphisms), each with its own valid existence. This clone is substantially in agreement with the reference, but a complete review of all prevailing variants is recommended prior to use. [More info](#)

OTI Annotation: This clone was engineered to express the complete ORF with an expression tag. Expression varies depending on the nature of the gene.

Components: The ORF clone is ion-exchange column purified and shipped in a 2D barcoded Matrix tube containing 10ug of transfection-ready, dried plasmid DNA (reconstitute with 100 ul of water).

Reconstitution Method:

1. Centrifuge at 5,000xg for 5min.
2. Carefully open the tube and add 100ul of sterile water to dissolve the DNA.
3. Close the tube and incubate for 10 minutes at room temperature.
4. Briefly vortex the tube and then do a quick spin (less than 5000xg) to concentrate the liquid at the bottom.
5. Store the suspended plasmid at -20°C. The DNA is stable for at least one year from date of shipping when stored at -20°C.

RefSeq: [NM_000655.5](#)

RefSeq Size: 2324 bp

RefSeq ORF: 1119 bp

Locus ID: 6402

UniProt ID: [P14151](#)

Cytogenetics: 1q24.2

Domains: CCP, CLECT, EGF, EGF

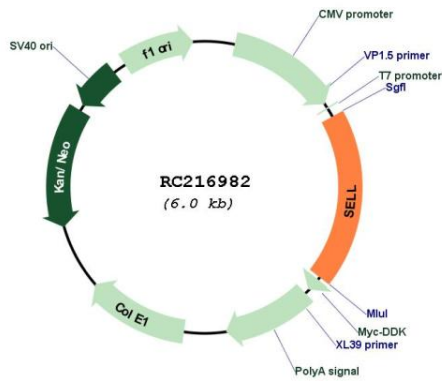
Protein Families: Druggable Genome, ES Cell Differentiation/IPS, Transmembrane

Protein Pathways: Cell adhesion molecules (CAMs)

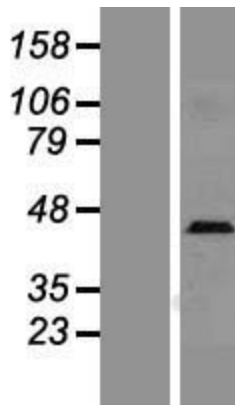
MW: 42.19 kDa

Gene Summary: This gene encodes a cell surface adhesion molecule that belongs to a family of adhesion/homing receptors. The encoded protein contains a C-type lectin-like domain, a calcium-binding epidermal growth factor-like domain, and two short complement-like repeats. The gene product is required for binding and subsequent rolling of leucocytes on endothelial cells, facilitating their migration into secondary lymphoid organs and inflammation sites. Single-nucleotide polymorphisms in this gene have been associated with various diseases including immunoglobulin A nephropathy. Alternatively spliced transcript variants have been found for this gene. [provided by RefSeq, Oct 2009]

Product images:



Circular map for RC216982



Western blot validation of overexpression lysate (Cat# [LY424583]) using anti-DDK antibody (Cat# [TA50011-100]). Left: Cell lysates from untransfected HEK293T cells; Right: Cell lysates from HEK293T cells transfected with RC216982 using transfection reagent MegaTran 2.0 (Cat# [TT210002]).