

Product datasheet for **RC216977**

WAVE 1 (WASF1) (NM_003931) Human Tagged ORF Clone

Product data:

Product Type:	Expression Plasmids
Product Name:	WAVE 1 (WASF1) (NM_003931) Human Tagged ORF Clone
Tag:	Myc-DDK
Symbol:	WAVE 1
Synonyms:	NEDALVS; SCAR1; WAVE; WAVE1
Mammalian Cell Selection:	Neomycin
Vector:	pCMV6-Entry (PS100001)
E. coli Selection:	Kanamycin (25 ug/mL)



[View online »](#)

ORF Nucleotide Sequence:

>RC216977 representing NM_003931
 Red=Cloning site Blue=ORF Green=Tags(s)

TTTTGTAATACGACTCACTATAGGGCGGCCGGAATTCGTCGACTGGATCCGGTACCGAGGAGATCTGCC
 GCCGGATCGCC

ATGCCCTAGTGAAGAAGAACATCGATCCTAGGCACTTGTGCCACACAGCACTGCCTAGAGGCATTAAGA
 ATGAAGCTGGAATGTGAACCAATATTTCTTGGCAAATAAATTAGACAAGTAAGTAGCCTAAGTAAATA
 TGCTGAAGATATATTTGGAGAATTATTTCAATGAAGCACATAGTTTTCTTCAGAGTCAACTCATTGCAA
 GAACGTGTGGACCGTTTATCTGTAGTGTACACAGCTTGATCCAAAGGAAGAAGATTGCTTTGCAAG
 ATATAACAATGAGGAAAGCTTTCCGAAGTTCTACAATTCAAGACCAGCAGCTTTTCGATCGCAAGACTTT
 GCCTATTCATTACAGGAGACGTACGATGTTTGTGAACAGCCTCCACCTCTCAATATACTCACTCCTTAT
 AGAGATGATGGTAAAGAAGGTCTGAAGTTTTATACCAATCCTTCGATTTCTTTGATCTATGAAAGAAA
 AAATGTTGCAAGATACAGAGGATAAGAGGAAGGAAAAGAGGAAGCAGAAGCAGAAAAATCTAGATCGTCC
 TCATGAACCAGAAAAAGTCCAAGAGCACCTCATGACAGCGCGGAGAATGGCAGAAGCTGGCCCAAGGT
 CCAGAGCTGGCTGAAGATGATGCTAATCTTTACATAAGCATATTGAAGTTGCTAATGGCCAGCCTCTC
 ATTTTGAACAAGACCTCAGACATACGTGGATCATATGGATGGATCTTACTCACTTTCTGCCTTGCATT
 TAGTCAGATGAGTGAGCTTCTGACTAGAGCTGAGGAAAGGGTATTAGTCAGACCACATGAACCACCTCCA
 CCTCCACCAATGCATGGAGCAGGAGATGCAAAAACCGATACCCACCTGTATCAGTTCTGCTACAGGTTTGA
 TAGAAAATCGCCCTCAGTCACCAGCTACAGGCAGAACACCTGTGTTTGTGAGCCCCACTCCCCACCTCC
 TCCACCACCTCTCCATCTGCCTTGCTCACTTCTCATTAAAGAGCTTCAATGACTTCACTCCTCCCCCT
 CCAGTACTCCCCACCTCCACCTCCAGCCACTGCTTTGCAAGCTCCAGCAGTACCACCACCTCCAGCTC
 CTCTTCAGATTGCCCTGGAGTTCTTCCAGCAGCTCCTCCTCAATTGCACCTCCTCTAGTACAGCCCTC
 TCCACCAGTAGCTAGAGCTGCCCAAGTATGTGAGACTGTACCAGTTTCCACTCCCACAAGGTGAAGTT
 CAGGGGCTGCCTCCACCCACCACCGCTCCTCTGCCTCCACCTGGCATTGCACCATCATCACCTGTCA
 CAGTTACAGCTCTTGCTCATCTCCTCCCTCTGGGCTACATCCAACCTCATCTACTGCCCCAGGTCCCCATG
 TCCATTAATGCCTCCATCTCCTCCATCACAAGTTATACCTGCTTCTGAGCCAAAGCGCCATCCATCAACC
 CTACCTGTAATCAGTGATGCCAGGAGTGCTACTGGAAGCAATACGAAAAGGTATTAGCTACGCAAAG
 TAGAAGAGCAGCGTGAACAGGAAGCTAAGCATGAACGCATTGAAAACGATGTTGCCACCATCCTGTCTCG
 CCGTATTGCTGTTGAATATAGTGATTGCGAAGATGATTCAGAATTTGATGAAGTAGATTGGTTGGAG

ACGCGTACGCGCGCCTCGAGCAGAAACTCATCTCAGAAGAGGATCTGGCAGCAAATGATATCCTGGATT
 ACAAGGATGACGACGATAAGGTTTAA

Protein Sequence:

>RC216977 representing NM_003931
 Red=Cloning site Green=Tags(s)

MPLVKRNIDPRHLCHTALPRGIKNELECVTNISLANIIRQLSSLSKYAEDIFGELFNEAHSFSFRVNSLQ
 ERVDRLSVSVTLQDLPKEEELSLQDITMRKAFRSSTIQDQQLFDRKTLPIPLQETVDVCEQPPPLNLT
 PYRDDGKEGLKFYTNPSYFFDLWKEKMLQDTEKKEKQKQKQKQKQKQKQKQKQKQKQKQKQKQKQKQKQ
 PELAEEDDANLLHKHIEVANGPASHFETRPQTYVDHMDGSYSLSALPFSQMSSELLTRAERVLVRPHEPPP
 PPPMHGAGDAKPIPTCISSATGLIENRPQSPATGRTPVFVSPTPPPPPPPLPSALSTSSLRASMTSTPPP
 PVPPPPPPATALQAPAVPPPAPLQIAPGVLHPAPPIAPPLVQPSPPVARAAPVCETVPVHPLPQGEV
 QGLPPPPPPPLPPPPIRSPVTVTALAHPPSGLHPTPSTAPGPHVPLMPPSPSQVIPASEPKRHPST
 LPVISDARSVLLAIRKGIQLRKVEEQREQREAKHERIENDVATILSRRIAVEYSDEDDSEFDEVDWLE

TRTRPLEQKLISEEDLAANDILDYKDDDDKV

Chromatograms:

https://cdn.origene.com/chromatograms/mk6238_d12.zip

Restriction Sites:

Sgfl-MluI

Cloning Scheme:


ACCN: NM_003931

ORF Size: 1677 bp

OTI Disclaimer: The molecular sequence of this clone aligns with the gene accession number as a point of reference only. However, individual transcript sequences of the same gene can differ through naturally occurring variations (e.g. polymorphisms), each with its own valid existence. This clone is substantially in agreement with the reference, but a complete review of all prevailing variants is recommended prior to use. [More info](#)

OTI Annotation: This clone was engineered to express the complete ORF with an expression tag. Expression varies depending on the nature of the gene.

Components: The ORF clone is ion-exchange column purified and shipped in a 2D barcoded Matrix tube containing 10ug of transfection-ready, dried plasmid DNA (reconstitute with 100 ul of water).

- Reconstitution Method:**
1. Centrifuge at 5,000xg for 5min.
 2. Carefully open the tube and add 100ul of sterile water to dissolve the DNA.
 3. Close the tube and incubate for 10 minutes at room temperature.
 4. Briefly vortex the tube and then do a quick spin (less than 5000xg) to concentrate the liquid at the bottom.
 5. Store the suspended plasmid at -20°C. The DNA is stable for at least one year from date of shipping when stored at -20°C.

RefSeq: [NM_003931.3](#)

RefSeq Size: 3230 bp

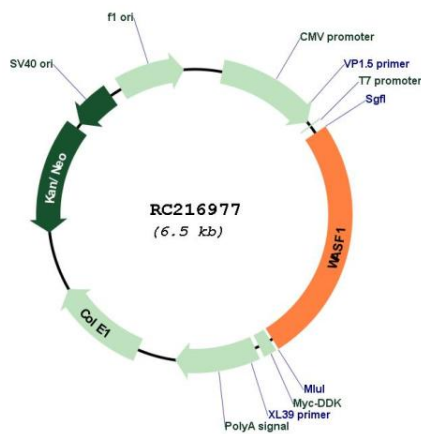
RefSeq ORF: 1680 bp

Locus ID: 8936

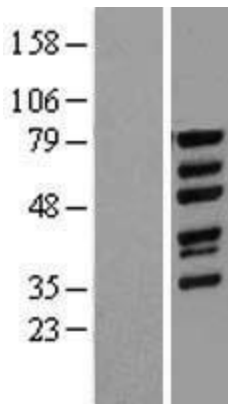
UniProt ID: [Q92558](#)

Cytogenetics: 6q21
Domains: WH2
Protein Families: Druggable Genome
Protein Pathways: Adherens junction, Fc gamma R-mediated phagocytosis, Regulation of actin cytoskeleton
MW: 61.5 kDa
Gene Summary: The protein encoded by this gene, a member of the Wiskott-Aldrich syndrome protein (WASP)-family, plays a critical role downstream of Rac, a Rho-family small GTPase, in regulating the actin cytoskeleton required for membrane ruffling. It has been shown to associate with an actin nucleation core Arp2/3 complex while enhancing actin polymerization in vitro. Wiskott-Aldrich syndrome is a disease of the immune system, likely due to defects in regulation of actin cytoskeleton. Multiple alternatively spliced transcript variants encoding the same protein have been found for this gene. [provided by RefSeq, Jul 2008]

Product images:



Circular map for RC216977



Western blot validation of overexpression lysate (Cat# [LY418341]) using anti-DDK antibody (Cat# [TA50011-100]). Left: Cell lysates from untransfected HEK293T cells; Right: Cell lysates from HEK293T cells transfected with RC216977 using transfection reagent MegaTran 2.0 (Cat# [TT210002]).