

## Product datasheet for **RC216975**

### **FAM155B (NM\_015686) Human Tagged ORF Clone**

#### **Product data:**

Product Type:	Expression Plasmids
Product Name:	FAM155B (NM_015686) Human Tagged ORF Clone
Tag:	Myc-DDK
Symbol:	FAM155B
Synonyms:	bB57D9.1; CXorf63; TED; TMEM28
Mammalian Cell Selection:	Neomycin
Vector:	pCMV6-Entry (PS100001)
E. coli Selection:	Kanamycin (25 ug/mL)



[View online »](#)

**ORF Nucleotide Sequence:**

>RC216975 representing NM\_015686  
 Red=Cloning site Blue=ORF Green=Tags(s)

TTTTGTAATACGACTCACTATAGGGCGGCCGGAATTCGTCGACTGGATCCGGTACCGAGGAGATCTGCC  
 GCC**CGCATCGCC**

ATGTTTCAGGGGCGCTTGATGTGGCCCGGAAAGACGCCCGCGCTGACTATCTGCTGCTGCTGCTGCT  
 GCTGGGCTCCCAGGCCGAGCGACAAACCTTGCGCCGACTCCGAGCGGGCGCAGCGATGGCGACTGTCCCT  
 GGCGTCCCTGCTCTTCTTACCCTGTGCTCGCTGACCATCTGTGGCTGTGCGCGGGGGCCCGGCCCGG  
 GCCAGGGAGCTGAGCAGCGCCATGCGGCCCCCATGGGGGCGCGCGGAGCGGCAGCCGGTGCCTCCTC  
 GCGCGGTGCTGCCGCTGCCGCCCGCCCGCCGCGAGCCAGCGCGCCCCAGGCACCTGCGGCCCCAG  
 ATACAGCAACCTGACCAAAGCCGCCCCCGCCGCGCTCTCGGCCGTGCTGCGCGGGCGTCCCAGAGCCC  
 ACGGGGCTGGACGACGCTTGACCAAATGCAATCTTTCAGAGACTTTTCGAACCGACTACTCCGGCCC  
 CCCCTCTGCGGCCCTGACTCCCTTCCCGTGCCCGCGCGAGTCCCCTCCGCCAAAAAACTTGCT  
 CAAAGGCCACTTTCGGAACCTCACTCTCTCTTTTGCACACCTACACGGTCTGGGACTTGCTGCTGGGC  
 ATGGACCGCCCCGACAGCCTGGACTGTAGCCTGGACACCCTGATGGGGGACTGCTGGCCGTGGTGCCA  
 GCCCGGGCTCCGGGGCTGGGAGGCGTGTAGCAACTGTATCGAGGCGTACCAGCGGCTGGACCGACACGC  
 TCAGGAAAAATATGACGAGTTCGACCTCGTGTGCATAAACTTACAGCGGAAGAGTACTCAATCCGG  
 TCCTGCACGAAAGGCTGTAAAGGCTGTACAAGGCCTGGCTGTGCTCAGAATACTTCAGCGTGACCCAGC  
 AGGAATGCCAGCGCTGGGTGCCCTGCAAGCAATACTGCCTGGAGGTGCAGACCCGGTGCCCTTTACT  
 CCCCACAATGAGGAAATGGTGTACGGAGGCTCCCTGGCTTTATCTGTACAGGGTTGCTGGATACTTCA  
 CCAAAGCGTCTGGAACCAAGTGTGTGACGTGCAGTGGGTCTCCTGTGAGGCGAAGAAGAAGAAGTCA  
 AGGAGCTGAGGCCCCCAAAACCCAGCAGCAATCCACCCTCTATTCCACCCTACCACCAACA  
 GTACCATCACTACCACCCCATCATGATCCCCAGGCCGTGTAGCAACAAGCCCGCCTGCTGCCGGTC  
 TCTGGGGCTCCCGCTCAGCCCTAGCAGGATCCGGCTCTGCGTCTTGTCTCATGCTCCTCCATACCG  
 TGGTGTCTTCTCCAGCAACCAGGGTGGTGGGGATTGGGGCTGGAGACTGCCTGCCCTAGAGGAGGG  
 CCTGACACGGGAAGAG

**ACGCGT**ACGCGGCCGCTCGAGCAGAAACTCATCTCAGAAGAGGATCTGGCAGCAATGATATCCTGGATT  
 ACAAGGATGACGACGATAAGGTTTAA

**Protein Sequence:**

>RC216975 representing NM\_015686  
 Red=Cloning site Green=Tags(s)

MFRGAWMWP GKDAAL TICCCCCWAPRPSDKPCADSERARWRLSLASLLFFTVLLADHLWLCAGARPR  
 ARELSSAMRPPWGAGRERQPVPPRAVLPLPPPPGEP SAPPGTGPRYSNLTKAAPAAGSRPVCGGVPEP  
 TGLDAACTKLQSLQRLFEPTTPAPPLRPPDSL SRAPAEFPSAKKNLLKGFHFRNFTLSFCDTYTVWDL LLG  
 MDRPDSLDCSLDTLMDLLAVVASPGSGAW EACSN CIEAYQRLDRHAQEKYDEFDLVLHKYLQAE EYSIR  
 SCTKGCKAVYKAWLCSEYF SVTQQECQRWVPCKQYCLEVQTRCPFILPDNEEMVYGG LPGFICTGLLDTS  
 PKRLETKCCDVQWVSCEAKKKFK ESEAPKTHQQQFHHSYFHYYHQYHYYHPHHDPPGRVSNKPALLPV  
 SGGSR LSPSRIRLCV LMLLHTVVSFSNQGGGGLGLETLPALEEGLTREE

**TR**TRPLEQKLI SEEDLAANDILDYKDDDDKV

**Chromatograms:**

[https://cdn.origene.com/chromatograms/ja1414\\_a10.zip](https://cdn.origene.com/chromatograms/ja1414_a10.zip)

**Restriction Sites:**

Sgfl-Mlul

Cloning Scheme:



ACCN: NM\_015686

ORF Size: 1416 bp

OTI Disclaimer: The molecular sequence of this clone aligns with the gene accession number as a point of reference only. However, individual transcript sequences of the same gene can differ through naturally occurring variations (e.g. polymorphisms), each with its own valid existence. This clone is substantially in agreement with the reference, but a complete review of all prevailing variants is recommended prior to use. [More info](#)

OTI Annotation: This clone was engineered to express the complete ORF with an expression tag. Expression varies depending on the nature of the gene.

Components: The ORF clone is ion-exchange column purified and shipped in a 2D barcoded Matrix tube containing 10ug of transfection-ready, dried plasmid DNA (reconstitute with 100 ul of water).

Reconstitution Method:

1. Centrifuge at 5,000xg for 5min.
2. Carefully open the tube and add 100ul of sterile water to dissolve the DNA.
3. Close the tube and incubate for 10 minutes at room temperature.
4. Briefly vortex the tube and then do a quick spin (less than 5000xg) to concentrate the liquid at the bottom.
5. Store the suspended plasmid at -20°C. The DNA is stable for at least one year from date of shipping when stored at -20°C.

RefSeq: [NM\\_015686.3](#)

RefSeq Size: 4050 bp

RefSeq ORF: 1419 bp

Locus ID: 27112

UniProt ID: [O75949](#)

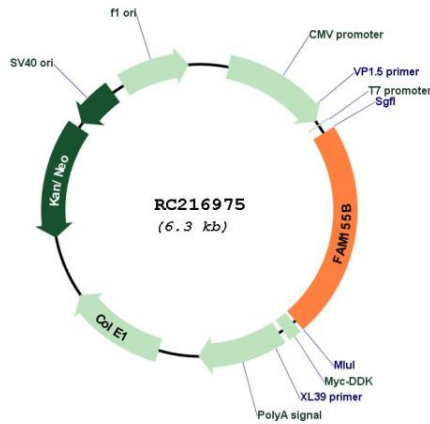
Cytogenetics: Xq13.1

**Protein Families:** Druggable Genome

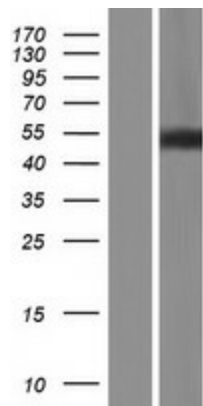
**MW:** 52.3 kDa

**Gene Summary:** This gene encodes a product belonging to a family of proteins with unknown function. The presence of two transmembrane domains suggests that this protein is a multi-pass membrane protein. [provided by RefSeq, Sep 2011]

**Product images:**



Circular map for RC216975



Western blot validation of overexpression lysate (Cat# [LY414381]) using anti-DDK antibody (Cat# [TA50011-100]). Left: Cell lysates from untransfected HEK293T cells; Right: Cell lysates from HEK293T cells transfected with RC216975 using transfection reagent MegaTran 2.0 (Cat# [TT210002]).