

Product datasheet for **RC216972**

Plakophilin 1 (PKP1) (NM_001005337) Human Tagged ORF Clone

Product data:

Product Type:	Expression Plasmids
Product Name:	Plakophilin 1 (PKP1) (NM_001005337) Human Tagged ORF Clone
Tag:	Myc-DDK
Symbol:	Plakophilin 1
Synonyms:	B6P; EDSFS
Mammalian Cell Selection:	Neomycin
Vector:	pCMV6-Entry (PS100001)
E. coli Selection:	Kanamycin (25 ug/mL)



[View online »](#)

**ORF Nucleotide
Sequence:**

>RC216972 ORF sequence
 Red=Cloning site Blue=ORF Green=Tags(s)

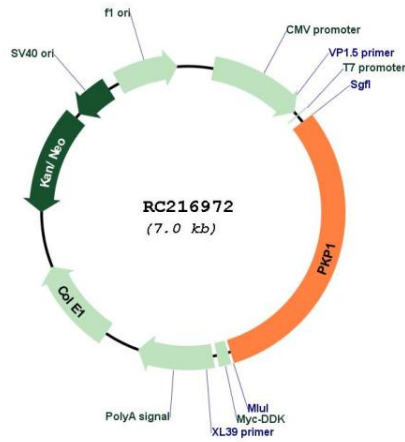
TTTTGTAATACGACTCACTATAGGGCGGCCGGAATTCGTCGACTGGATCCGGTACCGAGGAGATCTGCC
 GCC**CGGATCGCC**

ATGAACCACTCGCCGCTCAAGACCCGCTTGGCGTACGAATGCTTCCAGGACCAGGACAACCTCCAGTTGG
 CTTTGCCGTCGGACCAAAGATGAAAACAGGCAGTCTGGCAGGCAGCGGTGCAGGAGCAGGTGATGAT
 GACCGTCAAGCGGCAGAAGTCCAAGTCTTCCAGTCGTCACCCTGAGCCACTCCAATCGAGTTCCATG
 TATGATGGCTTGGCTGACAATTACAACATATGGGACCACCAGCAGGAGCAGCTACTACTCCAAGTTCCAGG
 CAGGGAATGGCTCATGGGGATATCCGATCTACAATGGAACCCCAAGCGGGAGCCTGACAACAGGCGCTT
 CAGCTCTACAGCCAGATGGAGAACTGGAGCCGGCACTACCCCGGGGAGCTGTAAACACCACCGGCGCA
 GGCAGCGACATCTGCTTCATGCAGAAAATCAAGGCGAGCCGAGTGAGCCCGACCTCTACTGTGACCCAC
 GGGGACCCCTGCGCAAGGGCACGCTGGGACGAAAGGGCCAGAAGACCACCCAGAACCCTACAGCTTTTA
 CAGCACCTGCAGTGGTCAGAAGGCCATAAAGAAGTGCCCTGTGCGCCCGCCCTCTTGTGCTCCAAGCAG
 GACCCTGTGTATATCCCGCCCATCTCCTGCAACAAGGACCTGTCTTTGGCCACTTAGGGCCAGCTCCA
 AGATCTGCAGTGAGGACATCGAGTGCAGTGGGCTGACCATCCCCAAGGCTGTGCAGTACCTGAGCTCCCA
 GGATGAGAAGTACCAGGCCATTGGGGCCTATTACATCCAGCATACCTGCTTCCAGGATGAATCTGCCAAG
 CAACAGGTCTATCAGCTGGGAGGCATCTGCAAGCTGGTGGACCTCCTCCGAGCCCAACCCAGAAGCTCC
 AGCAGGCTGCGGAGGGGCCCTGCGCAACCTGGTGTTCAGGAGCACCACCAACAAGCTGGAGACCCGGAG
 GCAGAAATGGGATCCGCGAGGCAGTCAGCCTCCTGAGGAGAACCGGAACCGCGAGATCCAGAAGCAGCTG
 ACTGGGCTGCTCTGGAACCTGTCTTCCACTGACGAGCTGAAGGAGGAACCTATTGCCGACGCCCTGCCTG
 TTCTGGCCGACCGCGTCATCATTCCCTTCTCTGGCTGGTGGATGGCAATAGCAACATGTCCCGGAAAT
 GGTGGACCCTGAGGTCTTCTTCAATGCCACAGGCTGCTTGAGGAACTGAGCTCGGCCGATGCAGGCCGC
 CAGACCATGCGTAACTACTCAGGGCTCATTGATCCCTCATGGCCTATGTCCAGAACTGTGTAGCGGCCA
 GCCGCTGTGACGACAAGTCTGTGAAAACCTGCATGTGTGTCTGCACAACCTCTCCTACCGCCTGGACGC
 CGAGGTGCCACCCGCTACCGCCAGCTGGAGTATAACGCCCGCAACGCCTACACCGAGAAGTCTCCACT
 GGCTGCTTCAGCAACAAGAGCGACAAGATGATGAACAACAACATGACTGCCCCCTGCCTGAGGAAGAGA
 CCAACCCCAAGGGCAGCGGCTGGTTGTACCATTAGATGCCATCCGCACCTACCTGAACCTCATGGGCAA
 GAGCAAGAAAGATGCTACCCTGGAGGCTGTGCTGGTGGCCTGCAGAACCTGACAGCCAGCAAGGGGCTG
 ATGTCCAGTGGCATGAGCCAGTTGATTGGGCTGAAGGAAAAGGGCCTGCCACAAATGCCCCCTCCTGC
 AATCTGGCAACTCTGATGTGGTGCAGTCCGGAGCCTCCCTCCTGAGCAACATGTCCCGCCACCCTCTGCT
 GCACAGAGTGTGGGAAACCAGGTGTTCCCGGAGGTGACCAGGCTCCTACCAGCCACACTGGCAATACC
 AGCAACTCCGAAGACATCTTGTCTCGGCTGCTACACTGTGAGGAACTGATGGCTCGCAGCCACAAC
 TGGCCAAGCAGTACTTCTCCAGCAGCATGCTCAACAACATCATCAACCTGTGCCGAAGCAGTGCCTCACC
 CAAGGCCGAGAAGCTGCCCGGCTTCTCCTGTCTGACATGTGGTCCAGCAAGGAACTGCAGGGTGTCTC
 AGACAGCAAGGTTTCGATAGGAACATGCTGGGAACCTTAGCTGGGGCCAACAGCCTCAGGAACCTCACCT
 CCCGATTC

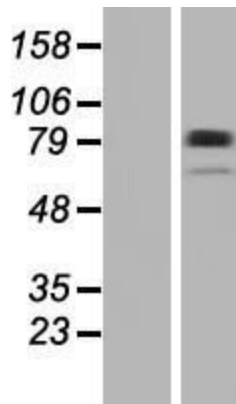
ACGCGTACGCGGCCGCTCGAGCAGAACTCATCTCAGAAGAGGATCTGGCAGCAAATGATATCCTGGATT
 ACAAGGATGACGACGATAAGGTTTAA

Components:	The ORF clone is ion-exchange column purified and shipped in a 2D barcoded Matrix tube containing 10ug of transfection-ready, dried plasmid DNA (reconstitute with 100 ul of water).
Reconstitution Method:	<ol style="list-style-type: none">1. Centrifuge at 5,000xg for 5min.2. Carefully open the tube and add 100ul of sterile water to dissolve the DNA.3. Close the tube and incubate for 10 minutes at room temperature.4. Briefly vortex the tube and then do a quick spin (less than 5000xg) to concentrate the liquid at the bottom.5. Store the suspended plasmid at -20°C. The DNA is stable for at least one year from date of shipping when stored at -20°C.
Note:	Plasmids are not sterile. For experiments where strict sterility is required, filtration with 0.22um filter is required.
RefSeq:	NM_001005337.3
RefSeq Size:	5384 bp
RefSeq ORF:	2181 bp
Locus ID:	5317
UniProt ID:	Q13835
Cytogenetics:	1q32.1
Protein Families:	Druggable Genome
MW:	80.5 kDa
Gene Summary:	This gene encodes a member of the arm-repeat (armadillo) and plakophilin gene families. Plakophilin proteins contain numerous armadillo repeats, localize to cell desmosomes and nuclei, and participate in linking cadherins to intermediate filaments in the cytoskeleton. This protein may be involved in molecular recruitment and stabilization during desmosome formation. Mutations in this gene have been associated with the ectodermal dysplasia/skin fragility syndrome. Two transcript variants encoding different isoforms have been found for this gene. [provided by RefSeq, Jul 2010]

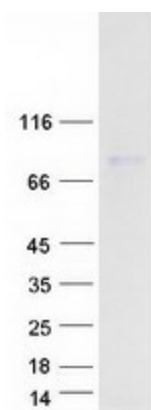
Product images:



Circular map for RC216972



Western blot validation of overexpression lysate (Cat# [LY423863]) using anti-DDK antibody (Cat# [TA50011-100]). Left: Cell lysates from untransfected HEK293T cells; Right: Cell lysates from HEK293T cells transfected with RC216972 using transfection reagent MegaTran 2.0 (Cat# [TT210002]).



Coomassie blue staining of purified PKP1 protein (Cat# [TP316972]). The protein was produced from HEK293T cells transfected with PKP1 cDNA clone (Cat# RC216972) using MegaTran 2.0 (Cat# [TT210002]).