

## Product datasheet for RC216967

### RBFOX1 (NM\_145891) Human Tagged ORF Clone

#### Product data:

Product Type:	Expression Plasmids
Product Name:	RBFOX1 (NM_145891) Human Tagged ORF Clone
Tag:	Myc-DDK
Symbol:	RBFOX1
Synonyms:	2BP1; A2BP1; FOX-1; FOX1; HRNBP1
Mammalian Cell Selection:	Neomycin
Vector:	pCMV6-Entry (PS100001)
E. coli Selection:	Kanamycin (25 ug/mL)
ORF Nucleotide Sequence:	>RC216967 representing NM_145891 Red=Cloning site Blue=ORF Green=Tags(s)

TTTTGTAATACGACTCACTATAGGGCGGCCGGAATTCGTCGACTGGATCCGGTACCGAGGAGATCTGCC  
GCC**CGATCGCC**

ATGCTGGCGTCTCAAGGAGTTCTCCTGCATCCTTATGGCGTGCCTATGATTGTACCGGCAGCTCCTTACC  
TTCCTGGACTGATTCAGGGTAATCAGGAAGCAGCCGCTGCCCTGACACAATGGCTCAGCCTTACGCTTC  
GGCCAGTTTGTCCCCGCAGAACGGTATCCCCGCGGAATACACGGCCCTCATCCCCACCCCGGCCA  
GAGTACACAGGCCAGACCAGGTTCCCGAGCACATTAACCTGTACCCTCCCGCCAGACGCACTCCG  
AGCAGAGCCCGGCGGACACGAGCGCTCAGACCGTCTCTGGCACCACACAGACAGATGACGCAGCACC  
GACGGATGGCCAGCCCCAGACACAACCTTCTGAAAACACGGAAAACAAGTCTCAGCCAAGCGGCTGCAT  
GTCTCCAATATCCCTTCAGGTTCCGGGATCCGGACCTCAGACAAATGTTTGGTCAATTTGGTAAAAATCT  
TAGATGTTGAAATATTTTTAATGAGCGAGGCTCAAAGGGATTTGGTTTCGTAACCTTTCGAAAATAGTGC  
CGATGCGGACAGGGCGAGGGAGAAATTACACGGCACCGTGGTAGAGGGCCGTAATAATCGAGGTAAATAAT  
GCCACAGCACGTGAATGACAAATAAAAGACCGTCAACCCTTATACAAATGGCTGGAAATTTGAATCCAG  
TTGTGGGTGCAGTCTACAGTCCCGAATTCTATGCAGGCACGGTCTGTGTGCCAGGCCAACAGGAGGG  
ATCTTCCATGTACAGTCCCCAGTTCACCTTGTATATACTTCTGCAATGCCAGGCTTCCCGTATCCAGCA  
GCCACCCCGCGGCCCGCTACCGAGGGGCGCACCTGCGAGGCGCGGTGCGCACCCTGTAACAACACCTTCA  
GGCCCGCGCGCCCCCGCCCGATCCCCGGCTACGGCGGAGTAGTGATCAAGAGCCTGTGTATGGCAA  
TAAATTGCTGCAGGGTGGTTATGCTGCATACCGCTACGCCAGCCTACCCTGCCACTGCCGCTGCCTAC  
AGTGACAGTTACGGACGAGTTTATGCTGCCACCCTACCACCACGCACTTGCTCCAGCCCCACCTACG  
GCGTTGGTGCCATGAATGCTTTTGCACCTTTGACTGATGCCAAGACTAGGAGCCATGCTGATGATGTGG  
TCTCGTCTTTCTTCATTGCAGGCTAGTATATACCGAGGGGGATAACAACCGTTTTGCTCCATAC

**ACGCGT**ACGCGGCCGCTCGAGCAGAACTCATCTCAGAAGAGGATCTGGCAGCAAATGATATCCTGGATT  
ACAAGGATGACGACGATAAGGTTTAA



[View online »](#)

**Protein Sequence:** >RC216967 representing NM\_145891  
Red=Cloning site Green=Tags(s)

MLASQGVLLHPYGVPMIVPAAPYLPGLIQGNQEAAPDTMAQPYASAQFAPPQNGIPAEYTAPHPHPAP  
 EYTGQTTVPEHTLNLYPQAQTHSEQSPADTSAQTVSGTATQTDAAPTDGQPQTQPSSENTENKSQPKRLH  
 VSNIPFRFRDPLRQMFQGFQKILDVEIIFNERGSKGFGFVTFENSADADRAREKLHGTVVEGRKIEVNN  
 ATARVMTNKKTVPYNTNGWKLNPVVGAVYSPEFYAGTVLLCQANQEGSSMYSAPSSLVYTSAMPGFYPYA  
 ATAAAAYRGAHLRGRRTVYNTFRAAAPPPIPAYGGVYQEPVYGNKLLQGGYAAARYAQPTPATAAAY  
 SDSYGRVYAADPYHHALAPPTYGVGAMNAFAPLTDKTRSHADDVGLVLSLQASIRGGYNRFAPY

TRTRPLEQKLISEEDLAANDILDYKDDDDKVV

**Chromatograms:** [https://cdn.origene.com/chromatograms/mk8058\\_d11.zip](https://cdn.origene.com/chromatograms/mk8058_d11.zip)

**Restriction Sites:** SgfI-MluI

**Cloning Scheme:**



\* The last codon before the Stop codon of the ORF

**ACCN:** NM\_145891

**ORF Size:** 1254 bp

**OTI Disclaimer:** The molecular sequence of this clone aligns with the gene accession number as a point of reference only. However, individual transcript sequences of the same gene can differ through naturally occurring variations (e.g. polymorphisms), each with its own valid existence. This clone is substantially in agreement with the reference, but a complete review of all prevailing variants is recommended prior to use. [More info](#)

**OTI Annotation:** This clone was engineered to express the complete ORF with an expression tag. Expression varies depending on the nature of the gene.

**Components:** The ORF clone is ion-exchange column purified and shipped in a 2D barcoded Matrix tube containing 10ug of transfection-ready, dried plasmid DNA (reconstitute with 100 ul of water).

**Reconstitution Method:**

1. Centrifuge at 5,000xg for 5min.
2. Carefully open the tube and add 100ul of sterile water to dissolve the DNA.
3. Close the tube and incubate for 10 minutes at room temperature.
4. Briefly vortex the tube and then do a quick spin (less than 5000xg) to concentrate the liquid at the bottom.
5. Store the suspended plasmid at -20°C. The DNA is stable for at least one year from date of shipping when stored at -20°C.

**RefSeq:** [NM\\_145891.3](#)

**RefSeq Size:** 3262 bp

**RefSeq ORF:** 1257 bp

**Locus ID:** 54715

**UniProt ID:** [Q9NWB1](#)

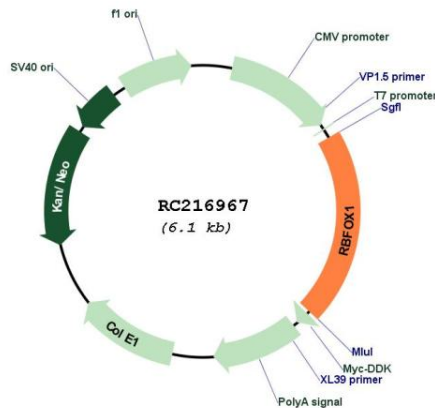
**Cytogenetics:** 16p13.3

**Domains:** RRM

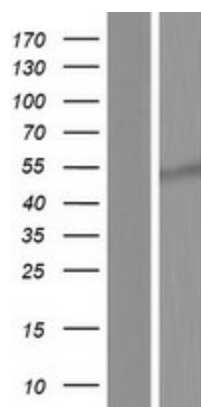
**MW:** 44.6 kDa

**Gene Summary:** The Fox-1 family of RNA-binding proteins is evolutionarily conserved, and regulates tissue-specific alternative splicing in metazoa. Fox-1 recognizes a (U)GCAUG stretch in regulated exons or in flanking introns. The protein binds to the C-terminus of ataxin-2 and may contribute to the restricted pathology of spinocerebellar ataxia type 2 (SCA2). Ataxin-2 is the product of the SCA2 gene which causes familial neurodegenerative diseases. Fox-1 and ataxin-2 are both localized in the trans-Golgi network. Several alternatively spliced transcript variants encoding different isoforms have been found for this gene. [provided by RefSeq, Nov 2011]

**Product images:**



Circular map for RC216967



Western blot validation of overexpression lysate (Cat# [LY407829]) using anti-DDK antibody (Cat# [TA50011-100]). Left: Cell lysates from untransfected HEK293T cells; Right: Cell lysates from HEK293T cells transfected with RC216967 using transfection reagent MegaTran 2.0 (Cat# [TT210002]).