

Product datasheet for RC216966

REG3A (NM_138937) Human Tagged ORF Clone

Product data:

Product Type: Expression Plasmids
Product Name: REG3A (NM_138937) Human Tagged ORF Clone
Tag: Myc-DDK
Symbol: REG3A
Synonyms: HIP; HIP/PAP; INGAP; PAP; PAP-H; PAP1; PBCGF; REG-III; REG3
Mammalian Cell Selection: Neomycin
Vector: pCMV6-Entry (PS100001)
E. coli Selection: Kanamycin (25 ug/mL)
ORF Nucleotide Sequence: >RC216966 ORF sequence
 Red=Cloning site Blue=ORF Green=Tags(s)

TTTTGTAATACGACTCACTATAGGGCGCCGGGAATTCGTCGACTGGATCCGGTACCGAGGAGATCTGCC
 GCC**CGATCGCC**

ATGCTGCCTCCCATGGCCCTGCCAGTGTATCTTGGATGCTGCTTTCCTGCCTCATGCTGCTGTCTCAGG
 TTCAAGGTGAAGAACCCAGAGGGAAGTCCCTCTGCACGGATCCGCTGTCCAAAGGCTCCAAGGCCTA
 TGGCTCCACTGCTATGCCTTGTCTTGTGTCACCAAATCCTGGACAGATGCAGATCTGGCCTGCCAGAAG
 CGGCCCTCGAAACCTGGTGTCTGTGCTCAGTGGGGCTGAGGGATCCTCGTGTCTCCCTGGTGAAGA
 GCATTGGTAACAGCTACTACATCTGGATTGGGCTCCATGACCCACACAGGGCACCGAGCCCAATGG
 AGAAGGTTGGGAGTGGAGTAGCAGTGTGATGAATTACTTTGCATGGGAGAGAAATCCCTCCACCATC
 TCAAGCCCGGCCACTGTGCGAGCCTGTCGAGAAGCACAGCATTCTGAGGTGAAAAGATTATACTGTA
 ATGTGAGGTTACCCTATGTCTGCAAGTTCACTGAC

ACGCGTACGCGGCCGCTCGAGCAGAACTCATCTCAGAAGAGGATCTGGCAGCAAATGATATCCTGGATT
 ACAAGGATGACGACGATAAGGTTTAA

Protein Sequence: >RC216966 protein sequence
 Red=Cloning site Green=Tags(s)

MLPPMALPSVSWMLLSCLMLLSQVQGEEPPQRELPSARIRCPKGSKAYGSHCYALFLSPKSWTDADLACQK
 RPSGNLVSVLGAEGSFVSSLVKSIGNSYSYVWIGLHDPTQGTEPNGEGWEWSSSDVMNYFAWERNPSTI
 SSPGHCASLSRSTAFLRWKDYNCNVRLPYVCKFTD

TRTRPLEQKLISEEDLAANDILDYKDDDDKV

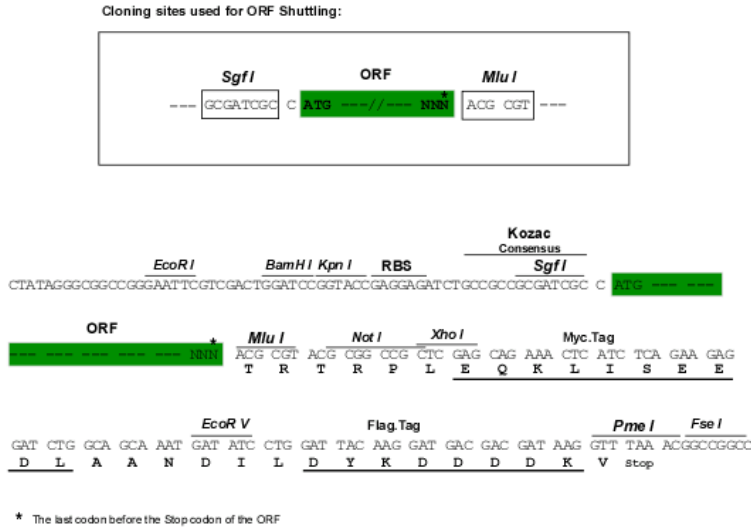
Chromatograms: https://cdn.origene.com/chromatograms/mk6338_c11.zip



[View online »](#)

Restriction Sites: SgfI-MluI

Cloning Scheme:



ACCN: NM_138937

ORF Size: 525 bp

OTI Disclaimer: The molecular sequence of this clone aligns with the gene accession number as a point of reference only. However, individual transcript sequences of the same gene can differ through naturally occurring variations (e.g. polymorphisms), each with its own valid existence. This clone is substantially in agreement with the reference, but a complete review of all prevailing variants is recommended prior to use. [More info](#)

OTI Annotation: This clone was engineered to express the complete ORF with an expression tag. Expression varies depending on the nature of the gene.

Components: The ORF clone is ion-exchange column purified and shipped in a 2D barcoded Matrix tube containing 10ug of transfection-ready, dried plasmid DNA (reconstitute with 100 ul of water).

Reconstitution Method:

1. Centrifuge at 5,000xg for 5min.
2. Carefully open the tube and add 100ul of sterile water to dissolve the DNA.
3. Close the tube and incubate for 10 minutes at room temperature.
4. Briefly vortex the tube and then do a quick spin (less than 5000xg) to concentrate the liquid at the bottom.
5. Store the suspended plasmid at -20°C. The DNA is stable for at least one year from date of shipping when stored at -20°C.

RefSeq: [NM_138937.3](#)

RefSeq Size: 807 bp

RefSeq ORF: 528 bp

Locus ID: 5068

UniProt ID: [Q06141](#)

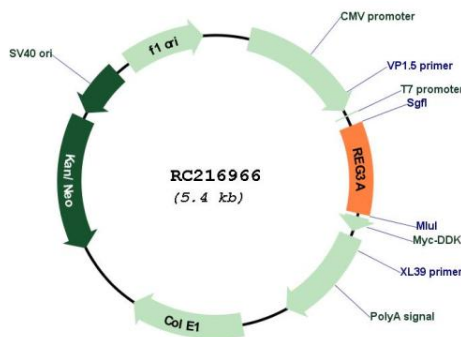
Cytogenetics: 2p12

Protein Families: Druggable Genome, Secreted Protein

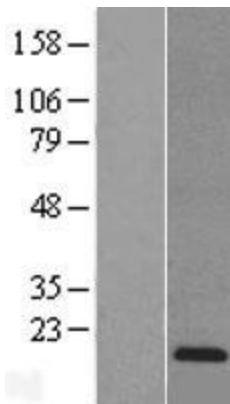
MW: 19.4 kDa

Gene Summary: This gene encodes a pancreatic secretory protein that may be involved in cell proliferation or differentiation. It has similarity to the C-type lectin superfamily. The enhanced expression of this gene is observed during pancreatic inflammation and liver carcinogenesis. The mature protein also functions as an antimicrobial protein with antibacterial activity. Alternate splicing results in multiple transcript variants that encode the same protein.[provided by RefSeq, Nov 2014]

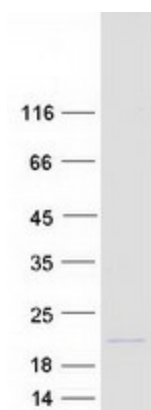
Product images:



Circular map for RC216966



Western blot validation of overexpression lysate (Cat# [LY408477]) using anti-DDK antibody (Cat# [TA50011-100]). Left: Cell lysates from untransfected HEK293T cells; Right: Cell lysates from HEK293T cells transfected with RC216966 using transfection reagent MegaTran 2.0 (Cat# [TT210002]).



Coomassie blue staining of purified REG3A protein (Cat# [TP316966]). The protein was produced from HEK293T cells transfected with REG3A cDNA clone (Cat# RC216966) using MegaTran 2.0 (Cat# [TT210002]).