

Product datasheet for **RC216955**

TMPRSS13 (NM_001077263) Human Tagged ORF Clone

Product data:

Product Type:	Expression Plasmids
Product Name:	TMPRSS13 (NM_001077263) Human Tagged ORF Clone
Tag:	Myc-DDK
Symbol:	TMPRSS13
Synonyms:	MSP; MSPL; MSPS; TMPRSS11
Mammalian Cell Selection:	Neomycin
Vector:	pCMV6-Entry (PS100001)
E. coli Selection:	Kanamycin (25 ug/mL)



[View online »](#)

ORF Nucleotide Sequence:

>RC216955 representing NM_001077263
 Red=Cloning site Blue=ORF Green=Tags(s)

TTTTGTAATACGACTCACTATAGGGCGGCCGGAATTCGTCGACTGGATCCGGTACCGAGGAGATCTGCC
 GCC**CGGATCGCC**

ATGGAGAGGGACAGCCACGGGAATGCATCTCCAGCAAGAACACCTTCAGCTGGAGCATCTCCAGCCCAGG
 CATCTCCAGCTGGGACACCTCCAGGCCGGGCATCTCCAGCCCAGGCATCTCCAGCCCAGGCATCTCCAGC
 TGGGACACCTCCGGGCCGGGCATCTCCAGCCCAGGCATCTCCAGCTGGTACACCTCCAGGCCGGGCATCT
 CCAGGCCGGGCATCTCCAGCCCAGGCATCTCCAGCCCAGGCATCTCCAGCCCAGGCATCTCCAGCCCAGGCATCTCCAGCTGG
 CATCACTTTCCAGGTCCTCATCCGGCAGGTCATCATCCGCCAGGTCAGCCTCGGTGACAACCTCCCCAAC
 CAGAGTGTACCTTGTAGAGCAACACCAGTGGGGGCTGTACCCATCCGATCATCTCTGCCAGGTCAGCA
 CCAGCAACCAGGGCCACCAGGGAGAGCCAGGTCAGAGCCTGCCAAGTTCACCTGGCGGGAGGGCCAGA
 AGCAGCTACCGCTCATCGGGTGCCTCCTCCTATTGCCCTGGTGGTTTCGCTCATCATCTCTTCCA
 GTTCTGGCAGGGCCACACAGGGATCAGGTACAAGGAGCAGAGGGAGAGCTGTCCAAGCAGCCTGTTCCG
 TGTGACGGGGTGGTGGACTGCAAGCTGAAGAGTACGAGCTGGGCTGCGTGAGGTTTGACTGGGACAAGT
 CTCTGCTTAAATCTACTCTGGGTCCTCCCATCAGTGGCTTCCATCTGTAGCAGCAACTGGAATGACTC
 TACTCAGAGAAGACCTGCCAGCAGCTGGGTTTCGAGAGTGTCAACCGGACAACCGAGGTTGCCACAGG
 GATTTTGCCAACAGCTTCTCAATCTTGAGATAAACTCCACCATCCAGGAAAGCCTCCACAGGTCGAAT
 GCCCTTCCAGCGGTATATCTCTCTCCAGTGTCCCACTGCGGACTGAGGGCCATGACCGGGCGGATCGT
 GGGAGGGCGCTGGCCTCGGATAGCAAGTGGCCTTGGCAAGTGAAGTCTGCACTTCGGCACCACCCACATC
 TGTGGAGGCACGCTCATTGACGCCAGTGGTGTCTCACTGCCGCCACTGCTTCTTCTGACCCGGGAGA
 AGGTCTGGAGGGCTGGAAGGTGTACGGGGCACCAGCAACCTGCACCAAGTTGCCTGAGGCAGCTCCAT
 TGCCGAGATCATCATCAACAGCAATTACACCGATTGAGGAGGACGACTATGACATCGCCCTCATGCGGCTG
 TCCAAGCCCTGACCCTGTCGCTCACATCCACCTGCTTGCCTCCCATGCATGGACAGACCTTTAGCC
 TCAATGAGACCTGCTGGATCACAGGCTTTGGCAAGACCAGGGAGACAGATGACAAGACATCCCCCTTCT
 CCGGGAGGTGCAGGTCATCTCATCGACTTCAAGAAATGCAATGACTACTTGGTCTATGACAGTTACCTT
 ACCCCAAGGATGATGTGTGCTGGGGACCTTCGTGGGGCAGAGACTCCTGCCAGGGAGACAGCGGGGGC
 CTCTTGTCTGTGAGCAGAACAACCGCTGGTACCTGGCAGGTGTCACCAGCTGGGGCAGGCTGTGGCCA
 GAGAAACAACTGGTGTGTACACAAAGTACAGAAGTCTTCCCTGGATTTACAGCAAGATGGAGAGC
 GAGGTGCGATTACAAAAATCC

ACGCGTACGCGGCCGCTCGAGCAGAAACTCATCTCAGAAGAGGATCTGGCAGCAAATGATATCCTGGATT
 ACAAGGATGACGACGATAAGGTTTAA

Protein Sequence:

>RC216955 representing NM_001077263
 Red=Cloning site Green=Tags(s)

MERDSHGNASPARTPSAGASPAQASPAQAGTTPGRASPAQASPAQASPAQAGTTPGRASPAQASPAQAGTTPGRAS
 PGRASPAQASPAQASPARASPALASLSRSSGRSSSARSASVTTSPTRVYLVRATPVGAVPIRSSPARSA
 PATRATRESPGTSLPKFTWREGQKQLPLIGCVLLLIALLVSLIILFQFWQGHGTGIRYKEQRESCPKHAVR
 CDGVVDCKLKSDELGCVRFDWDKSLKIIYSGSSHQWLPICSSNWNDSYSEKTCQQLGFESAHRTEVAHR
 DFANSFSLRYNSTIQESLHRSECPQRSYISLQCSHCGLRAMTGRIVGGALASDSKWPWQVSLHFGTTHI
 CGGTLIDAQWVLTAAHCFVVTREKVLGKWKVYAGTSLNLHLPEAASIAEIIINSNYTDEEDDYDIALMRL
 SKPLTLSAHIHPACLPMHGQTFSLNETCWITGFGKTRETDKTSFPLREVQVNLIDFKKNDYLVYDSYL
 TPRMCMAGDLRGGDRSCQGDSSGGLVCEQNNRWYLAGVTSWGTGCGQRNKPVGYYTKVTEVLPWIYSKMES
 EVRFRKS

TRTRPLEQKLISEEDLAANDILDYKDDDDKV

Chromatograms:

https://cdn.origene.com/chromatograms/mk8005_d05.zip

Restriction Sites:

Sgfl-Mlul

Cloning Scheme:


ACCN: NM_001077263

ORF Size: 1701 bp

OTI Disclaimer: The molecular sequence of this clone aligns with the gene accession number as a point of reference only. However, individual transcript sequences of the same gene can differ through naturally occurring variations (e.g. polymorphisms), each with its own valid existence. This clone is substantially in agreement with the reference, but a complete review of all prevailing variants is recommended prior to use. [More info](#)

OTI Annotation: This clone was engineered to express the complete ORF with an expression tag. Expression varies depending on the nature of the gene.

Components: The ORF clone is ion-exchange column purified and shipped in a 2D barcoded Matrix tube containing 10ug of transfection-ready, dried plasmid DNA (reconstitute with 100 ul of water).

Reconstitution Method:

1. Centrifuge at 5,000xg for 5min.
2. Carefully open the tube and add 100ul of sterile water to dissolve the DNA.
3. Close the tube and incubate for 10 minutes at room temperature.
4. Briefly vortex the tube and then do a quick spin (less than 5000xg) to concentrate the liquid at the bottom.
5. Store the suspended plasmid at -20°C. The DNA is stable for at least one year from date of shipping when stored at -20°C.

RefSeq: [NM_001077263.3](#)

RefSeq Size: 3391 bp

RefSeq ORF: 1704 bp

Locus ID: 84000

UniProt ID: [Q9BYE2](#)

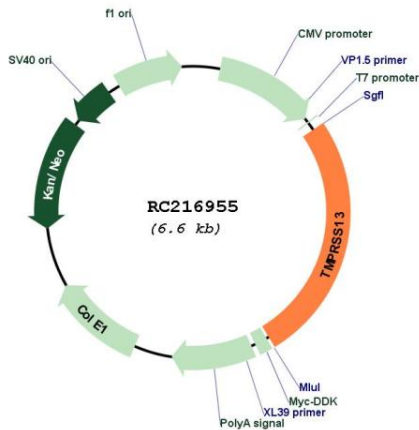
Cytogenetics: 11q23.3

Protein Families: Druggable Genome, Protease, Transmembrane

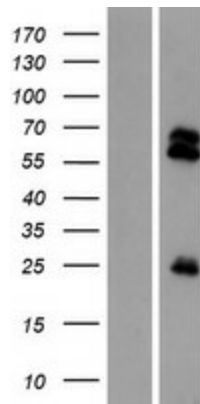
MW: 61.3 kDa

Gene Summary: This gene encodes a member of the type II transmembrane serine protease family. Transmembrane serine proteases are regulated by protease inhibitors and known to function in development, homeostasis, infection, and tumorigenesis. Multiple transcript variants encoding different isoforms have been found for this gene. [provided by RefSeq, Oct 2011]

Product images:



Circular map for RC216955



Western blot validation of overexpression lysate (Cat# [LY421395]) using anti-DDK antibody (Cat# [TA50011-100]). Left: Cell lysates from untransfected HEK293T cells; Right: Cell lysates from HEK293T cells transfected with RC216955 using transfection reagent MegaTran 2.0 (Cat# [TT210002]).