

Product datasheet for RC216951

Dystrophin (DMD) (NM_004012) Human Tagged ORF Clone

Product data:

Product Type:	Expression Plasmids
Product Name:	Dystrophin (DMD) (NM_004012) Human Tagged ORF Clone
Tag:	Myc-DDK
Symbol:	DMD
Synonyms:	BMD; CMD3B; DXS142; DXS164; DXS206; DXS230; DXS239; DXS268; DXS269; DXS270; DXS272; MRX85
Vector:	pCMV6-Entry (PS100001)
E. coli Selection:	Kanamycin (25 ug/mL)
Cell Selection:	Neomycin
ORF Nucleotide Sequence:	>RC216951 representing NM_004012 Red=Cloning site Blue=ORF Green=Tags(s)

TTTTGTAATACGACTCACTATAGGGCGGCCGGAATTCGTCGACTGGATCCGGTACCGAGGAGATCTGCC
GCC**CGATCGCC**

ATGAGTGCCAGGAAGCTGCGAAATCTGTCTTACAAAAAGGCTGTAAGGAGGCAAAAGTTGCTTGAACAGA
GCATCCAGTCTGCCAGGAGACTGAAAAATCCTTACACTTAATCCAGGAGTCCCTCACATTCATTGACAA
GCAGTTGGCAGCTTATATTGCAGACAAGGTGGACGCAGCTCAAAATGCCTCAGGAAGCCCAGAAAAATCCAA
TCTGATTTGACAAGTCATGAGATCAGTTTAGAAGAAATGAAGAAACATAATCAGGGGAAGGAGGCTGCC
AAAGAGTCTGTCTCAGATTGATGTTGCACAGAAAAAATTACAAGATGTCTCCATGAAGTTTCGATTATT
CCAGAAACCAGCCAATTTGAGCAGCGTCTACAAGAAAGTAAGATGATTTTAGATGAAGTGAAGATGCAC
TTGCTGCATTGGAAACAAGAGTGTGGAACAGGAAGTAGTACAGTACAGCTAAATCATTGTGTGAACT
TGTATAAAAGTCTGAGTGAAGTGAAGTCTGAAGTGGAAATGGTGATAAAGACTGGACGTCAGATTGTACA
GAAAAAGCAGACGGAAAAATCCAAAGAAGTGTGAAAGAGTAACAGCTTTGAAATTGCATTATAATGAG
CTGGGAGCAAAGGTAACAGAAAGAAAGCAACAGTTGGAGAAATGCTTGAATTTGCCGTAAGATGCGAA
AGGAAATGAATGTCTTGACAGAAATGGCTGGCAGCTACAGATATGGAATTGACAAAGAGATCAGCAGTTGA
AGGAATGCCTAGTAATTTGGATTCTGAAGTTGCCTGGGAAAGGCTACTCAAAAAGAGATTGAGAAACAG
AAGGTGCACCTGAAGAGTATCACAGAGGTAGGAGAGGCTTGAACAGTTTTGGGCAAGAGAGGACGT
TGGTGGAAAGATAAACTCAGTCTTCTGAATAGTAAGTGGATAGCTGTACCTCCCGAGCAGAAGAGTGGTT
AAATCTTTTGTGGAATACCAGAAACACATGGAACCTTTTGACCAGAATGTGGACCACATCACAAAGTGG
ATCATTACGGCTGACACACTTTTGGATGAATCAGAGAAAAAGAAACCCAGCAAAAAGAGAGCTGCTTA
AGCGTTTAAAGGCAGAACTGAATGACATACGCCAAAGGTGGACTCTACACGTGACCAAGCAGCAAACTT
GATGGCAAACCGCGGTGACCACTGCAGGAAATAGTAGAGCCCCAAATCTCAGAGCTCAACCATCGATTT
GCAGCCATTTACACAGAATTAAGACTGGAAGGCCTCCATTCTTTGAAGGAATGGAGCAGTTTAACT
CAGATACAAAAATGCTTGAACCACTGGAGGCTGAAATTCAGCAGGGGTGAATCTGAAAGAGGAAGA
CTTCAATAAAGATATGAATGAAGACAATGAGGGTACTGTAAAAGAATTTGCAAAAGAGGAGACAACCTTA



[View online »](#)

CAACAAAGAATCACAGATGAGAGAAAGCGAGAGGAAATAAAGATAAAACAGCAGCTGTTACAGACAAAAC
 ATAATGCTCTCAAGGATTTGAGGTCTCAAAGAAGAAAAAGGCTCTAGAAATTTCTCATCAGTGGTATCA
 GTACAAGAGGCAGGCTGATGATCTCCTGAAATGCTTGGATGACATTGAAAAAAATAGCCAGCCTACCT
 GAGCCCAGAGATGAAAGGAAAATAAGGAAATTTGATCGGGAAATTCAGAGAAGAAAGAGGAGCTGAATG
 CAGTGCCTAGGCAAGCTGAGGGCTTGTCTGAGGATGGGGCCGCAATGGCAGTGGACCAACTCAGATCCA
 GCTCAGCAAGCGCTGGCGGAAAATTTGAGAGCAAATTTGCTCAGTTTGAAGACTCAACTTTGCACAAAT
 CACACTGTCCGTGAAGAAACGATGATGGTGATGACTGAAGACATGCCTTTGGAAAATTTCTATGTGCCTT
 CTACTTATTTGACTGAAATCACTCATGTCTCACAAAGCCCTATTAGAAGTGAACAACCTTCAATGCTCC
 TGACCTCTGTGCTAAGGACTTTGAAGATCTCTTTAAGCAAGAGGAGTCTCTGAAGAAATATAAAGATAGT
 CTACAACAAAGCTCAGGTCGGATTGACATTATTCATAGCAAGAAGACAGCAGCATTGCAAAGTGCAACGC
 CTGTGGAAAGGGTGAAGCTACAGGAAGCTCTCTCCAGCTTGATTTCCAATGGGAAAAAGTTAACAAAAT
 GTACAAGGACCGACAAGGGCGATTTGACAGATCTGTTGAGAAATGGCGGCGTTTTTATTATGATATAAG
 ATATTTAATCAGTGGCTAACAGAAGCTGAACAGTTTCTCAGAAAGACACAAATCCTGAGAATTTGGAAAC
 ATGCTAAATACAAATGGTATCTTAAGGAACTCCAGGATGGCATTGGGCAGCGGCAAACTGTTGTCAGAAC
 ATTTGAATGCAACTGGGGAAGAAAATAATTCAGCAATCCTCAAAAACAGATGCCAGTATTCTACAGGAAAA
 TTGGGAAGCCTGAATCTGCGGTGGCAGGAGGTCTGCAAACAGCTGTGAGACAGAAAAAGAGGCTAGAAG
 AACAAAAGAATATCTTGTGAGAATTTCAAAGAGATTTAAATGAATTTGTTTTATGTTGGAGGAAGCAGA
 TAACATTGCTAGTATCCCACTTGAACCTGGAAAAGAGCAGCAACTAAAAGAAAAGCTTGAGCAAGTCAAG
 TTACTGGTGAAGAGTTGCCCTGCGCCAGGGAATTTCAAACAATTAATGAACTGGAGGACCCGTGCT
 TTGTAAGTGTCTCCATAAGCCCAGAAGAGCAAGATAAACTTGAATAAGCTCAAGCAGACAAAATCTCCA
 GTGGATAAAGGTTTCCAGAGCTTACCTGAGAAACAAGGAGAAAATGAAGCTCAAATAAAGACCTTGGG
 CAGCTTGAAAAAAGCTTGAAGACCTTGAAGAGCAGTTAAATCATCTGCTGTGGTTATCTCTATTA
 GGAATCAGTTGGAATTTATAACCAACCAACCAAGAGGACCAATTTGACGTTTCAAGAACTGAAATAGC
 AGTTCAAGCTAAACAACCGGATGTGGAAGAGATTTTGTCTAAAGGGCAGCATTGTACAAGGAAAAACCA
 GCCACTCAGCCAGTGAAGAGGAAGTTAGAAGATCTGAGCTCTGAGTGAAGGCGGTAAACCGTTTACTTC
 AAGAGCTGAGGGCAAAGCAGCCTGACCTAGCTCCTGGACTGACCACTATTGGAGCCTCTCTACTCAGAC
 TGTTACTCTGGTGACACAACCTGTGTTACTAAGGAAACTGCCATCTCCAACTAGAAAATGCCATCTTCC
 TTGATGTTGGAGGTACCTGCTCTGGCAGATTTCAACCGGGCTTGGACAGAACTTACCAGCTGGCTTCTC
 TGCTTGATCAAGTTATAAAATCACAGAGGGTGATGGTGGTGACCTTGAAGATATCAACGAGATGATCAT
 CAAGCAGAAGGCAACAATGCAGGATTTGGAACAGAGGCGTCCCCAGTTGGAAGAACTCATTACCGCTGCC
 CAAAATTTGAAAAACAAGACCAGCAATCAAGAGGCTAGAACAATCATTACGGATCGAATTGAAAGAATTC
 AGAATCAGTGGGATGAAGTACAAGAACCTTCAAGACCGGAGGCAACAGTTGAATGAAATGTTAAAGGA
 TTCAACACAATGGCTGGAAGCTAAGGAAGAAGCTGAGCAGGTCTTAGGACAGGCCAGAGCCAAGCTTGAG
 TCATGGAAGGAGGGTCCCTATACAGTAGATGCAATCCAAAAGAAAATCACAGAAACCAAGCAGTTGGCCA
 AAGACCTCCGCCAGTGGCAGACAAATGTAGATGTGGCAATGACTTGGCCCTGAACTTCTCCGGGATTA
 TTCTGCAGATGATACCAGAAAAGTCCACATGATAACAGAGAATATCAATGCCTCTTGAGAAGCATTTCAT
 AAAAGGGTGAGTGAGCGAGAGGCTGCTTGAAGAAAACCATAGATTACTGCAACAGTCCCCCTGGACC
 TGGAAAAGTTTCTTGCCTGGCTTACAGAAGCTGAAACAACCTGCCAATGTCTACAGGATCTACCCGTAA
 GGAAAGGCTCCTAGAAGACTCCAAGGGAGTAAAAGAGCTGATGAAACAATGGCAAGACCTCAAGTGAA
 ATTGAAGCTCACACAGATGTTTATCACAACTGGATGAAAACAGCCAAAAATCCTGAGATCCCTGGAAG
 GTTCCGATGATGCAGTCTGTTACAAAAGACGTTTGGATAACATGAACTTCAAGTGGAGTGAACCTCGGAA
 AAAGTCTCTCAACATTAGGTCCCATTTGGAAGCCAGTTCTGACCAGTGAAGCGTCTGCACCTTTCTCTG
 CAGGAACTTCTGGTGTGGCTACAGCTGAAAGATGATGAATTAAGCCGGCAGGCACCTATTGGAGGCGACT
 TTCCAGCAGTTCAGAAGCAGAACGATGTACATAGGGCCTTCAAGAGGGAATGAAAACATAAAGAACCTGT
 AATCATGAGTACTTTGAGACTGTACGAATATTTCTGACAGAGCAGCCTTTGGAAGGACTAGAGAACTC
 TACCAGGAGCCCAGAGAGCTGCCTCCTGAGGAGAGAGCCAGAATGTCACTCGGCTTCTACGAAAGCAGG
 CTGAGGAGGTCAATACTGAGTGGGAAAAATTTGAACTGCACTCCGCTGACTGGCAGAGAAAAATAGATGA
 GACCTTGAAGACTCCAGGAACCTCAAGAGGCCACGGATGAGCTGGACCTCAAGCTGCGCAAGCTGAG
 GTGATCAAGGGATCCTGGCAGCCGTGGGCGATCTCTCATTGACTCTCTCCAAGATCACCTCGAGAAAAG
 TCAAGGCACTTCGAGGAGAAAATTTGCGCCTCTGAAAGAGAAGCTGAGCCACGTCAATGACCTTGTCTGCCA
 GCTTACCCTTTGGGCATTACAGCTCTACCGTATAACCTCAGCACTCTGGAAGACCTGAACACCAGATGG
 AAGCTTCTGCAGGTGGCCGTGAGGACCGAGTCAAGGACCTGCATGAAGCCACAGGACTTTGGTCCAG

CATCTCAGCACTTTCTTTCCACGTCTGTCCAGGGTCCCTGGGAGAGGCCATCTCGCCAAACAAAGTGCC
CTACTATATCAACCACGAGACTCAAACAACTTGCTGGGACCATCCCAAAATGACAGAGCTCTACAGTCT
TTAGCTGACCTGAATAATGTCAGATTCTCAGCTTATAGGACTGCCATGAAACTCCGAAGACTGCAGAAGG
CCCTTTGCTTGGATCTCTTGAGCCTGTCAGCTGCATGTGATGCCTTGACCAGCACAACTCAAGCAAAA
TGACCAGCCCATGGATATCCTGCAGATTATTAATTGTTTGACCACTATTTATGACCGCTGGAGCAAGAG
CACAACAATTTGGTCAACGTCCCTCTCTGCGTGGATATGTGCTGAACCTGGCTGCTGAATGTTTATGATA
CGGGACGAACAGGGAGGATCCGTGCTCTTTTAAAACCTGGCATCATTTCCCTGTGTAAGCACATT
GGAAGACAAGTACAGATACCTTTTCAAGCAAGTGGCAAGTTCAACAGGATTTTGTGACCAGCGCAGGCTG
GGCCTCCTTCTGCATGATTCTATCCAAATTCCAAGACAGTTGGGTGAAGTTGCATCCTTTGGGGCAGTA
ACATTGAGCCAAGTGCCGGAGCTGCTTCCAATTTGCTAATAAAGCCAGAGATCGAAGCGGCCCTCTT
CCTAGACTGGATGAGACTGGAACCCAGTCCATGGTGTGGCTGCCCGTCTGCACAGAGTGGCTGCTGCA
GAAACTGCCAAGCATCAGGCCAAATGTAACATCTGCAAAGAGTGTCCAATCATTGGATTACAGGTACAGGA
GTCTAAAGCACTTAATTATGACATCTGCCAAAGCTGCTTTTTTCTGGTCGAGTTGCAAAGGCCATAA
AATGCACTATCCCATGGTGAATATTGCACTCCGACTACATCAGGAGAAGATGTTTCGAGACTTTGCCAAG
GTACTAAAAACAATTTGCAACCAAAGGTATTTTGCGAAGCATCCCCGAATGGGCTACCTGCCAGTGC
AGACTGTCTTAGAGGGGGACAACATGGAACCTCCCGTTACTCTGATCAACTTCTGGCCAGTAGATTCTGC
GCCTGCCTCGTCCCTCAGCTTTTACACAGTACTACTCATTACAGCATTGAACATTATGCTAGCAGGCTA
GCAGAAATGGAACAGCAATGGATCTTATCTAAATGATAGCATCTCTCCTAATGAGAGCATAGATGATG
AACATTTGTTAATCCAGCATTACTGCCAAAGTTTGAACCAGGACTCCCCCTGAGCCAGCCTCGTAGTCC
TGCCAGATCTTGATTTCCCTTAGAGAGTGAAGAAAGAGGGGAGCTAGAGAGAATCCTAGCAGATCTTGAG
GAAGAAAACAGGAATCTGCAAGCAGAATATGACCGTCTAAAGCAGCAGCACGAACATAAAGGCCTGTCCC
CACTGCCGTCCCCTCTGAAATGATGCCACCTCTCCCAGAGTCCCCGGGATGCTGAGCTCATTGCTGA
GGCCAAGCTACTGCGTCAACACAAGGCCGCTGGAAGCCAGGATGCAAATCCTGGAAGACCACAATAAA
CAGCTGGAGTCACAGTTACACAGGCTAAGGCAGCTGCTGGAGCAACCCAGGCAGAGGCCAAAGTGAATG
GCAACAACGGTGTCTCTCTCTACCTCTCTACAGAGGTCGACAGCAGTCAGCCTATGCTGCTCCGAGT
GGTTGGCAGTCAAACCTCGGACTCCATGGGTGAGGAAGATCTTCTCAGTCTCCCAGGACACAAGCACA
GGGTTAGAGGAGGTGATGGAGCAACTCAACAACCTCTCCCTAGTTCAAGAGGAAGAAATACCCCTGGAA
AGCCAATGAGAGAGGACACAATG

ACGGTACGCGGCCGCTCGAGCAGAACTCATCTCAGAAGAGGATCTGGCAGCAAATGATATCTGGATT
ACAAGGATGACGACGATAAGGTTTAA

Protein Sequence: >RC216951 representing NM_004012
 Red=Cloning site Green=Tags(s)

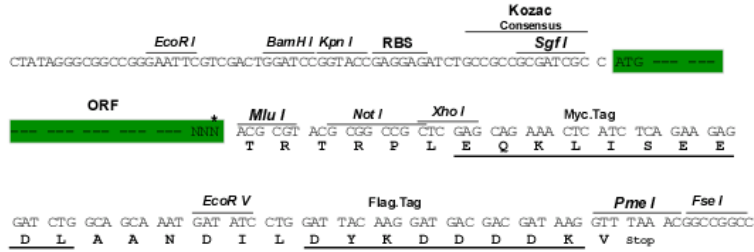
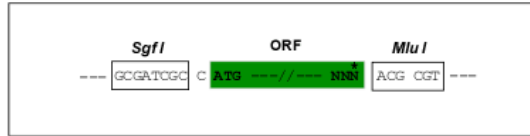
MSARKLRNLSYKKAARRQKLLLEQSIQSAQETEKSLHLIQESLTFIDKQLAAYIADKVDAAQMPQEAQKIQ
 SDLTSHEISLEEMKKHNQGEAAQRVLSQIDVAQKQLQDVSMKFRLLFQKPFANFEQRLQESKMILDEVKMH
 LPALETKSVEQEVVQSQLNHCVNLYKSLSEVKSEVEMVIKTGRQIVQKKQTENPKELDERVTALKLHYNE
 LGAKVTERKQQLKELKCLSRKMRKEMNVLTEWLAATMELTKRSAVEGMPSNLDSEVAWGKATQKEIEKQ
 KVHLKSITEVGEALKTVLGGKETLVEDKLSLLNSNWIIVTSRAEEWLNLLLEYQKHMETFQNVVDHITKW
 IIQADTLLDESEKKKPPQKEDVLKRLKAELENDIRPKVDSTRDQAANLMANRGDHCRLVEPQISELNHRF
 AAIISHRIKTKASIPKLELEQFNDSIQKLEPLEAEIQQGVNLKEEDFNKDMNEDNEGTVKELLQRGDNL
 QQRIITDERKREEIKIKQQLLQTKHNALKDLRSQRRKKALEISHQWYQYKRQADDLLKCLDDIEKKLASLP
 EPRDERKIKEIDRELQKKKEELNAVRRQAEGLSEDGAAMAVEPTQIQLSKRWREIESKFAQFRRLNFAQI
 HTVREETMMVMTEDMPLEISYVPSTYLTEITHVSQALLEVEQLLNAPDLCAKDFEDLQKQESLKNIKDS
 LQSSGRIDIHHSKTAALQSATPVERVKLQEQALSQLDFQWEKVNKMYKDRQGRFDRSVEKWRFFHYDIK
 IFNQWLTEAEQFLRKTQIPENWEHAKYKWLKELQDGGIGQRQTVVRTL NATGEEIIQQSSKTDASILQEK
 LGSLNLRWQEVCKQLSDRKKRLEEQKNILSEFQRDLNEFVWLWEEADNIASIPLEPGKEQQLKEKLEQVK
 LLVEELPLRQGILKQLNETGGPVLVSAPISPEEQDKLENLKKQTNLQWIKVSRALPEKQGEIEAQIKDLG
 QLEKKLEDLEEQLNHLNLLWLSPIRNQLEIYNQPNQEGPFQVQETEIIVAVQAKQPDVEEILSKGQHLYEKP
 ATQPVKRLKLEDLSEWKAVNRLQELRAKQPD LAPGLTTIGASPTQTVTLVTQPVVTKETAISKLEMPSS
 LMLEVPALADFNRAWTELTDWLSLLDQVKSQRVMVGDLEDINEMIIKQKATMQDLEQRRPQLEELITAA
 QNLKNKTSNQEARTIITDRIERIQNQWDEVQEHQNRQQLENEMLKQDSTQWLEAKEEAQVVGQARAKLE
 SWKEGPTYVDIAIQKKITETKQLAKDLRQWQTNVDVANDLAKLLRDYSADDTRKVVHMITENINASWRSIH
 KRVSEREAALETHRLLQQFPLDLEKFLAWL TEAETTANVLQDATRKRERLEDSKGVKELMKQWQDLQGE
 IEAHTDYYHNLDENSQKILRSLEGSDDAVLLQRRLDNMNFKWSELRKKSLNIRSHLEASSDQWKRLHL SL
 QELLVWLQKDDDEL SRQAPIGGDFPAVQKQNDVHRAFKRELKTKPEVIMSTLETVRIFLTEQPLEGLEKL
 YQEPRELPPPEERAQNVTRLLRKQAEVNTWEKLNLSADWQRKIDETLERLQELQEATDEL DLKLRQAE
 VIKGSWQPVGDLLIDSLQDHLEKVKALRGEIAPLKENVSHVNDLARQLTTLGIQLSPYNLSTLEDLNTRW
 KLLQVAVEDRVRQLHEAHRDFGPASQHFLLSTSVQGPWERAISPKNVPPYYINHETQTTCDWHPKMTLEYQS
 LADLNNVRFSAYRTAMKLRRLQKALCLDLLSLAACDALDQHNLKQNDQPMILQIINCLTTIYDRLEQE
 HNNLVNVPLCVDMLNLLNVYDTGRTGRIRVLSFKTGIISLCKAHLEDKYRYLQKQVASTGFCDQRRR
 GLLLHDSIQIPRQLGEVASFSGSNIEPSVRSFCQFANNKPEIEAALFLDWMRLEPQSMVWLPVLRVAAA
 ETAKHQAKCNICKECPIIGFRYRSLKHFNYDQCSCFFSGRVAKGHKMHYPMVEYCTPTTSGEDVRDFAK
 VLKKNKFRTKRYFAKHPRMGYLPVQTVLEGDNMETPVTLINFWPVSAPASSPQLSHDDTHSRIEHYASRL
 AEMENSGSYLNDISIPNESIDDEHLLIQHYCQSLNQDSPLSQPRSPAQILISLESEERGELERILADLE
 EENRNLQAEYDRLLKQQHEHKGLSPLPSPPEMPTSPQSPRDAELIAEAKLLRQHKGRLEARMQILEDHKN
 QLESQHLRLRQLLEQPQAEAKVNGTTVSSPSTSLQRSDSSQPMLLRVVGSTSDSMGEEDLLSPPQDTST
 GLEEVMEQLNNSFPSSRGRNTPGKPMREDTM

TRTRPLEQKLISEEDLAANDILDYKDDDDKV

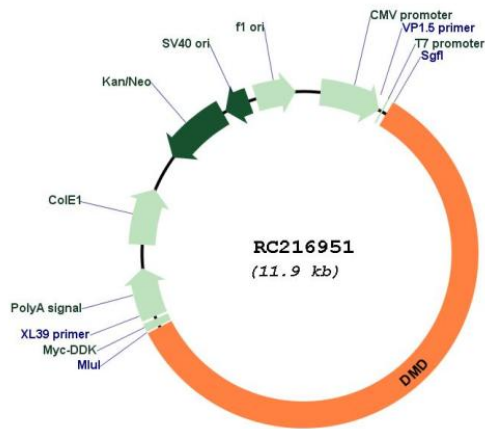
Restriction Sites: SgfI-MluI

Cloning Scheme:

Cloning sites used for ORF Shuttling:



* The last codon before the Stop codon of the ORF

Plasmid Map:


ACCN: NM_004012

ORF Size: 7023 bp

OTI Disclaimer: The molecular sequence of this clone aligns with the gene accession number as a point of reference only. However, individual transcript sequences of the same gene can differ through naturally occurring variations (e.g. polymorphisms), each with its own valid existence. This clone is substantially in agreement with the reference, but a complete review of all prevailing variants is recommended prior to use. [More info](#)

OTI Annotation: This clone was engineered to express the complete ORF with an expression tag. Expression varies depending on the nature of the gene.

Components: The ORF clone is ion-exchange column purified and shipped in a 2D barcoded Matrix tube containing 10ug of transfection-ready, dried plasmid DNA (reconstitute with 100 ul of water).

Reconstitution Method:	<ol style="list-style-type: none">1. Centrifuge at 5,000xg for 5min.2. Carefully open the tube and add 100ul of sterile water to dissolve the DNA.3. Close the tube and incubate for 10 minutes at room temperature.4. Briefly vortex the tube and then do a quick spin (less than 5000xg) to concentrate the liquid at the bottom.5. Store the suspended plasmid at -20°C. The DNA is stable for at least one year from date of shipping when stored at -20°C.
RefSeq:	NM_004012.3 , NP_004003.1
RefSeq Size:	9914 bp
RefSeq ORF:	7026 bp
Locus ID:	1756
UniProt ID:	P11532
Cytogenetics:	Xp21.2-p21.1
Protein Pathways:	Arrhythmogenic right ventricular cardiomyopathy (ARVC), Dilated cardiomyopathy, Hypertrophic cardiomyopathy (HCM), Viral myocarditis
MW:	271 kDa
Gene Summary:	This gene spans a genomic range of greater than 2 Mb and encodes a large protein containing an N-terminal actin-binding domain and multiple spectrin repeats. The encoded protein forms a component of the dystrophin-glycoprotein complex (DGC), which bridges the inner cytoskeleton and the extracellular matrix. Deletions, duplications, and point mutations at this gene locus may cause Duchenne muscular dystrophy (DMD), Becker muscular dystrophy (BMD), or cardiomyopathy. Alternative promoter usage and alternative splicing result in numerous distinct transcript variants and protein isoforms for this gene. [provided by RefSeq, Dec 2016]