

Product datasheet for **RC216933**

RALGDS (NM_006266) Human Tagged ORF Clone

Product data:

Product Type:	Expression Plasmids
Product Name:	RALGDS (NM_006266) Human Tagged ORF Clone
Tag:	Myc-DDK
Symbol:	RALGDS
Synonyms:	RalGEF; RGDS; RGF
Mammalian Cell Selection:	Neomycin
Vector:	pCMV6-Entry (PS100001)
E. coli Selection:	Kanamycin (25 ug/mL)



[View online »](#)

ORF Nucleotide Sequence:

>RC216933 representing NM_006266
 Red=Cloning site Blue=ORF Green=Tags(s)

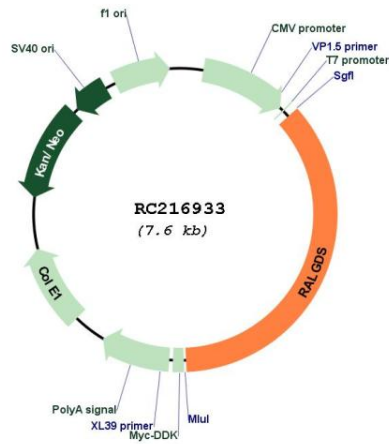
TTTTGTAATACGACTCACTATAGGGCGGCCGGGAATTCGTCGACTGGATCCGGTACCGAGGAGATCTGCC
 GCC**CGGATCGCC**

ATGGTGCAGCGCATGTGGCCGAGGCGGCCGGCCTGCTGGCGGCCGAGCCGCTGTTCCGGGCTCCC
 GCGGAGCCGACGCGTGTGGACGCCGTGCGCCTGGAGGTGGCGTCCCCGACAGCTGCCGGTGGTGT
 GCACAGCTTACGCAGCTAGACCCGACCTGCCGCGCCGGAGAGCTCCACGCAGGAGATCGGTGAGGAG
 CTGATCAACGGAGTCATCTACTCCATCTCCCTGCGCAAGGTGCAGCTGCACCACGGAGGCAACAAGGGGC
 AGCGCTGGCTCGGGTATGAGAATGAGTCGGCCCTGAACCTTTATGAGACTTGCAAGGTGCGGACCGTGAA
 GGCTGGCAGCTGGAGAAGCTGGTGGAGCACCTGGTGCCAGCCTTCCAGGGCAGCGACCTCTCTACGTC
 ACCATCTCTGTGTACCTATAGAGCCTTACCACCACCCAACAGGTCTGGACCTGCTGTTCAAAAGGT
 ACGGTAGATGTGACGCCCTCACGGCCTCTCTAGATACGGCTGCATCCTCCCTATTCGACGAGGATGG
 TGGACCCAGGACCAACTTAAAAATGCCATCTCTCCATCCTGGGCACCTGGCTGGACCAGTACTCGGAG
 GATTTCTGTCAACCTCCGGACTTCCCTGCCTCAAGCAGCTGGTGGCCTACGTGCAGCTCAACATGCCAG
 GCTCAGACCTGGAGCGCCGTGCCACCTTCTCCTGGCCAGCTGGAGCACTCGGAACCCATTGAGGCAGA
 GCCTGAGGCTCTGTACCAAGTGCAGCTCTAAAACCAACTCCAGAGCTCGAGCTAGCTCTAACACAGCT
 CGAGCACCCAGCCAGTCCGGCTCCAGCCCGGAGCCAGAGCCAGCTCCAACACCCAGCTCCAGGTTTCA
 AGCTAGAAGTAGCTCCAGCACAGCTCCGGAGCTCCAGCAGGCTCCAGAGCCAGCTGTGGGACTAGAATC
 GGCTCCAGCGCCAGCTCTGGAAGTAGAGCCAGCTCCAGAACAGGATCCAGCTCCCTCACAACTCTAGAG
 CTGGAGCCAGCTCCAGCACCACTTCCATCATTACAGCCTTCTGGCCTTACCTGTGGTTGACAGAGAACC
 GGCTGAGTGAGGAGAAGCCTCACCTCTTGGTGTCCCTCCAGATCTGGTGGCAGAGCAGTTACACTGAT
 GGATGCGGAAGTGTCAAGAAGGTGGTGCCTACCAGTGCCTGGGCTCCATCTGGTCCCAGCGGGACAAG
 AAGGGCAAGGAGCACCTGGCGCCACCATCCGCGCCACTGTACCCAGTTCAACAGTGTGGCCAAGTGTG
 TCATCACCACTGCCTCGGAACCGAAGCACGAAAGCCCCAGACAGGGCCAGGGTGGTGGAGCACTGGAT
 CGAGGTGGCCAGGGAGTCCGGATCCTCAAGAAGTCTCGTCACTGTATGCCATCCTCTCTGCCCTGCAG
 AGCAACTCCATCCACCGTCTGAAGAAGACGTGGGAAGACGTTTCCAGGGACAGTTTCCGGATCTTTCAGA
 AGCTGTCAGAGATCTTCTCAGATGAGAACAAGTACTCATTGAGCCGGGAGCTGCTCATCAAGGAGGGCAC
 CTCCAAGTTTCCACCTGGAGATGAACCCCAAGAGAGCCAGAAACGGCCGAAGGAGACGGGCATCATC
 CAGGGCACCGTCCCTACCTGGGCAGTTCCTCACCGACCTGGTGTGCTGGACTGCCATGAAGGACT
 ATCTGTATGGCAGACTCATCAACTTTGAGAAGAGGAGGAAGGAGTTCGAGGTGATCGCCCAGATCAAGCT
 GCTGCAGTCGGCCTGCAACAAGTACAGCATCGCGCCAGATGAGCAATTTGGGGCCTGGTTCCGGGCCGCTG
 GAGCGGCTCAGCGAGACTGAGAGCTACAACCTGTGCTGCGAGCTGGAGCCCCATCCGAGTCAAGCAGCA
 ACACCTCAGGACCAAGAAGAACACAGCCATTGTCAAGCGCTGGAGCGACCGCCAGGCCCCAGCACTGA
 GCTCAGTACCAGTGGCAGCTCCCACTCCAAGTCTGTGACCAGCTCAGGTGTGGCCCTACCTCAGCAGC
 GGGGACATCGTGACGCGCTCAGCGTGCCTCGGCCGGCTCCTTAGCTCCGACGTGGAGGAGATCAACA
 TCAGCTTCGTCCGGAGTCTCCTGATGGCCAGGAAAAGAAGTTCGGGAATCAGCCTCACAGTCAATCCCC
 GGAGACCTCCGGCATCAGCTCAGCCTCCAGCAGCACCTCGTCTCCTCAGCCTCCACCAGCCCGTGGCT
 GCCACACGCACCCACAAGCGCTCTGTCTCAGGGCTCTGCAACTCAGCTCCGCGCTGCCGCTCTACAACC
 AGCAGGTGGGCGACTGCTGTATCATCCGCGTACGCTGGACGTGGACAATGGCAACATGTACAAGAGCAT
 CCTGGTACCAGCAAGATAAGGCTCCGGCTGTAATCCGCAAGGCCATGGACAAACAACCTGGAGGAG
 GAGGAGCCGGAGGACTATGAGCTGCTGCAGATTCTCTCAGATGACCGGAAGCTGAAGATCCCTGAAAACG
 CCAACGTCTTCTATGCCATGAAGTCTACCAGCAACTATGACTTTGTCTCAAGAAGCGGACCTTACC
 CAAAGGAGTGAAGTCAAGCACGGAGCCAGTCCACCCTCCCTCGCATGAAGCAGAAAGGACTCAAGATTGCC
 AAGGGCATCTTC

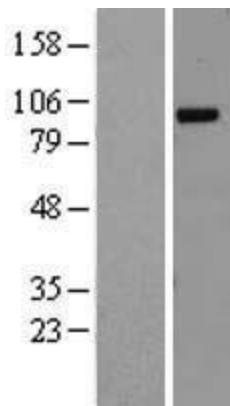
ACGCGTACGCGGCCGCTCGAGCAGAACTCATCTCAGAAGAGGATCTGGCAGCAAATGATATCCTGGATT
 ACAAGGATGACGACGATAAGGTTTAA

OTI Disclaimer:	The molecular sequence of this clone aligns with the gene accession number as a point of reference only. However, individual transcript sequences of the same gene can differ through naturally occurring variations (e.g. polymorphisms), each with its own valid existence. This clone is substantially in agreement with the reference, but a complete review of all prevailing variants is recommended prior to use. More info
OTI Annotation:	This clone was engineered to express the complete ORF with an expression tag. Expression varies depending on the nature of the gene.
Components:	The ORF clone is ion-exchange column purified and shipped in a 2D barcoded Matrix tube containing 10ug of transfection-ready, dried plasmid DNA (reconstitute with 100 ul of water).
Reconstitution Method:	<ol style="list-style-type: none"> 1. Centrifuge at 5,000xg for 5min. 2. Carefully open the tube and add 100ul of sterile water to dissolve the DNA. 3. Close the tube and incubate for 10 minutes at room temperature. 4. Briefly vortex the tube and then do a quick spin (less than 5000xg) to concentrate the liquid at the bottom. 5. Store the suspended plasmid at -20°C. The DNA is stable for at least one year from date of shipping when stored at -20°C.
RefSeq:	NM_006266.4
RefSeq Size:	3656 bp
RefSeq ORF:	2745 bp
Locus ID:	5900
UniProt ID:	Q12967
Cytogenetics:	9q34.13-q34.2
Domains:	RA, RasGEFN, RasGEF
Protein Pathways:	Colorectal cancer, Pancreatic cancer, Pathways in cancer
MW:	100.4 kDa
Gene Summary:	Guanine nucleotide dissociation stimulators (GDSs, or exchange factors), such as RALGDS, are effectors of Ras-related GTPases (see MIM 190020) that participate in signaling for a variety of cellular processes.[supplied by OMIM, Nov 2010]

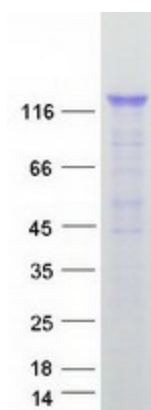
Product images:



Circular map for RC216933



Western blot validation of overexpression lysate (Cat# [LY416759]) using anti-DDK antibody (Cat# [TA50011-100]). Left: Cell lysates from untransfected HEK293T cells; Right: Cell lysates from HEK293T cells transfected with RC216933 using transfection reagent MegaTran 2.0 (Cat# [TT210002]).



Coomassie blue staining of purified RALGDS protein (Cat# [TP316933]). The protein was produced from HEK293T cells transfected with RALGDS cDNA clone (Cat# RC216933) using MegaTran 2.0 (Cat# [TT210002]).