

Product datasheet for RC216923

AASDH (NM_181806) Human Tagged ORF Clone

Product data:

Product Type:	Expression Plasmids
Product Name:	AASDH (NM_181806) Human Tagged ORF Clone
Tag:	Myc-DDK
Symbol:	AASDH
Synonyms:	ACSF4; LYS2; NRPS998; NRPS1098
Mammalian Cell Selection:	Neomycin
Vector:	pCMV6-Entry (PS100001)
E. coli Selection:	Kanamycin (25 ug/mL)
ORF Nucleotide Sequence:	>RC216923 representing NM_181806 Red=Cloning site Blue=ORF Green=Tags(s)

TTTTGTAATACGACTCACTATAGGGCGGCCGGAATTCGTCGACTGGATCCGGTACCGAGGAGATCTGCC
GCC**CGATCGCC**

ATGACTCTTCAGGAATTGGTGCATAAAGCTGCCTCCTGTTATATGGACAGAGTAGCTGTATGTTTTGATG
AATGCAACAACCAGCTTCCAGTTTACTACACCTACAAGACTGTGGTTAATGCTGCTTCTGAATTATCAAA
TTTTCTGCTGTTACTACTGTGACTTTCAAGGAATTCGGGAAATTTGGTCTCTACTGCCAACCTGGGATAGAC
TTACCCTCTGGATTTTAGGAATCTCCAAGTCCCGGCTGCTTATGTACCTATCGAGCCAGATTCACCAC
CGTCATTATCAACTCATTTTATGAAAAATGTAATCTAAAGTATATCCTTGTGAAAAAACAATTA
TAAATTTAAATCTTTTCATGAAACATTATTGAACTATGATACATTTACAGTGGAACATAATGACCTAGTG
CTCTTCAGACTTCACTGGAAAAACTGAGGTGAAGTGTGCTAAATGATGGAAGAGAAATATGAAA
AAGAAAAATAAAAGCATAAGTTCTGAGCATGTCAATGAAGAAAAAGCAGAAGAACACATGGATCTGAG
GCTAAAGCATTGCTTAGCCTATGTTCTACATACATCAGGGACTACAGGGATACCGAAGATTGTCAGAGTG
CCTCATAAGTGTATAGTACCAAATCCAGCATTTTCGGGTACTTTTTGACATCACACAAGAAGATGTTT
TGTTTCTGGCTTACCTCTGACCTTCGATCCTTCTGTTGTGGAATATTTCTTGTCTATCAAGTGGTGC
CTCTCTGCTTATTGTACCAACTCCGTCAAGTTGCTCCCATCAAATAGCCAGCGTTCTTTTTCCCAT
CATAGAGTGACTGTTTTGCAGGCAACACCAACATTGCTTAGAAGATTTGGATCTCAGCTTATCAAGTCAA
CTGTTTTGTGAGCCACTACTTCTCTCGAGTATTAGCCCTTGGTGGTGAAGCGTTTTCCATCATTTGACAGT
TCTCAGAAGCTGGAGAGGAGAAGGCAATAAAACACAAATATTTAATGTTTATGGTATCACAGAGGTATCA
AGTTGGGCGACATTTATAGGATTCAGAGAAGACTCTTAACTCTACTCTCAAATGTGAATTGCCTGTAC
AACTGGGATTTCCACTTCTTGAACAGTAGTTGAAGTCAGAGATACTAATGGCTTACAATTCAGGAAGG
CAGTGGCCAAGTATTTTAGGTGGCAGAAACAGAGTGTGTTTTCTTGATGATGAAGTGACAGTACCCTT
GGCACAATGCGAGCTACAGGAGACTTTGTGACTGTGAAAGATGGAGAGATTTTTTTTTGGGACGAAAAG
ACAGTCAGATCAAACGTCATGGCAAACGCTTAAACATTGAACTTGTGCAACAGGTTGCTGAAGAGCTTCA
GCAAGTGGAGTCTGTGCAGTTACATGGTATAATCAGGAAAAATTAATTCTTTCATGGTGTCTAAAGAT



[View online >](#)

GCTTCAGTAAAAGAATACATCTTTAAAGAACTGCAGAAATATCTTCCAAGTCATGCAGTCCCGGATGAGC
 TTGTATTGATCGACTCTCTACCATTTACATCCCACGGCAAATTTGATGTTTCTGAGTTAAACAAGATATA
 TTTAAACTACATAAACTTGAAGTCTGAGAATAAGCTCAGTGGGAAAGAGGACCTTTGGGAAAAATTACAG
 TATTTGTGGAAGTCTACTCTGAATCTCCAGAAGATCTTTTGAGGGTTCCTGATGAGTCACTCTTCTTAA
 ATAGTGGTGGAGATTCTTAAAGTCCATCCGGCTCCTCAGTGAGATTGAAAACTTGTGGTACATCAGT
 ACCTGGGCTTCTGGAAATTTCTCAGCAGTCCATTTTAGAGATTTATAATCACATCCTTCAAACAGTG
 GTTCCAGATGAAGATGTGACATTCAGGAAGAGTTGTGCCACAAAAGGAAACTCAGCGACATTAATCAAG
 AGGAAGCCAGTGGAACATCTTTACATCAGAAAGCCATCATGACTTTCAGTTCGCCAATGAGATTAATGC
 TTTTGTGTACTGAGCAGAGGGAGTCAAATTTTGTCTCTGAATCCACTAGGTTTTTAACAAAGTTAGGA
 CATTGCTCTTCAGCCTGCTCTTCTGACTCAGTTTACAGACCAACATTCAAAATTTGAAAGGCTTAAATT
 CTCCAGTCTTATTGGGAAGTCAAAGATCCATCTGTGTGCAAAAGTTTCTGAAGAGGGGAAACCTGC
 GATAGGGACTCAGAAAATGGAGTTACATGTGAGGTGGAGGTGAGACACAGGCAAATGTGTAGATGCTTCA
 CCGCTGGTGTAAATACCACTTTTGATAAGTCACTACAACGTGTACATTGGTCCCATTCTCATAGAA
 TGAAGGCAGTTGACTTTTACTCTGGGAAGTAAAATGGGAACAGATTTTGGGAGATCGAATTGAATCCTC
 AGCATGTGTATCTAAGTGTGAAACTTTATTGTGGTGGGCTGTTATAATGGATTAGTTTATGTTCTGAAA
 AGTAATAGTGGAGAAAAATACTGGATGTTTACTACTGAAGATGCTGTCAAAGCTCGGCAACCATGGATC
 CAACCACAGGACTCATTTACATTGGATCTCATGACCAGCACGCATATGCTTTAGATATTTATAGAAAGAA
 GTGTGTTTGAAGTCAAATGTGGAGGAAGTGTCTTTCTCTCCGTGTTTGAACCTGATCCACATCAT
 TTGTATTTTGGTACATTTGGGAGGACTTTTACTGGCTGTAATCTGCTACTGGGAACGTTATTTGAAAC
 ATTCCTGTGAAAACCACTCTTCTTCCCCACAATGTTGCTCACAGTATATTTGTATTGGCTGTGTAGA
 TGGGAATTTACTCTGCTTACTCACTTTGGAGAACAGGTTTGGCAGTCTCTACCACTGGACCAATCTTT
 TCATCCCCGTGACTCACCATCAGAGCAAAAAATATTTTTGGTCCCATGATTGCTTTTACTACTGTT
 GTAACATGAAAGGTCACCTGCAGTGGAAATTTGAAACTACTCAAGGGTCTATGCAACACCGTTTGGCTT
 CCATAACTACAATGGCAGCAATGAAATGTTGCTGGCAGCAGCATCTACTGATGGGAAAGTGTGGATCTTG
 GAATCTCAGAGTGGACAATTGCAAAGTGTATGAACTTCTGGGAAAGTCTTCTCTTCTCTGTGGTCC
 TGGAAATCAATGCTCATTATTGGGTGTAGAGATAATTATGTTTATTGTCTGGATTTATTGGGTGGCAATCA
 AAAA

ACGCGTACGCGGCCGCTCGAGCAGAAACTCATCTCAGAAGAGGATCTGGCAGCAATGATATCCTGGATT
 ACAAGGATGACGACGATAAGGTTTAA

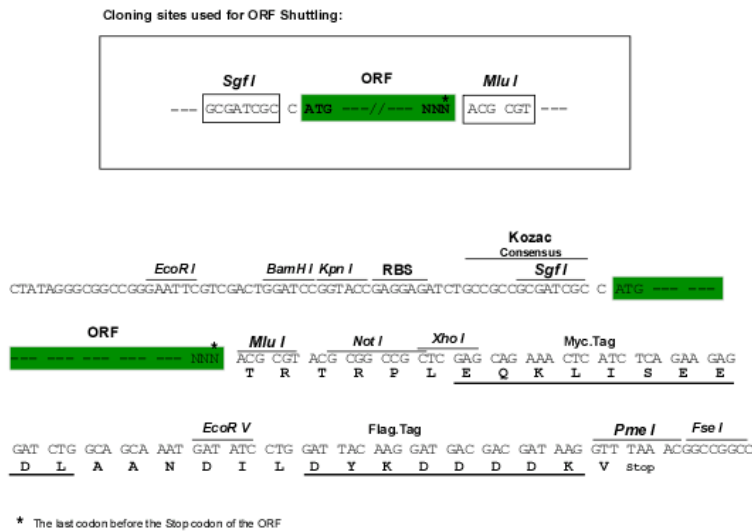
Protein Sequence:

>RC216923 representing NM_181806
 Red=Cloning site Green=Tags(s)

MTLQELVHKAASCYMDRVAVCFDECNQLPVVYTYKTVVNAASELSNFLLLHCDFQGIRESGLYCYQPGID
 LPSWILGILQVPAAYVPIEPDPPSLSTHFMMKCNLKYILVEKKQINKFKSFHETLLNYDTFTVEHNDLV
 LFRLHWKNTENVMLNDGKEKYEKIKISSEHVNEEKAEHMDLRLKHCLAYVLHTSGTTGIPKIVRV
 PHKCIVPNIQHFRVLFITQEDVLFASPLTFDPSVVEIFLALSSGASLLIVPTSVKLLPSKLASVLF
 HRVTVLQATPTLLRRFGSQLIKSTVLSATTSRLVLAALGGEAFPSLTVLRSWRGEGNKTIQFNVYGI
 TEVS
 SWATIYRIPEKTLNSTLKCCELPVQLGFPVVEVRDNTGFTIQEGSQVFLGGRNRVCFLDDEVTVPL
 GTMRATGDFVTVKDGEIFFLGRKDSQIKRHGKRLNIELVQVAAEELQVVECAVTWYNQEKILFMVSKD
 ASVKEYIFKELQKYLPSHAVPDELVLIDSLPFTSHGKIDVSELNKIYLNINLSENKLSGKEDLWEKLQ
 YLWKSTLNLPELRLVPDESLFLNSGGDSLKIRLLSEIEKLVGTSVPGLEIILSSSILEIYNHILQTV
 VPDEDVTRFKSCATKRKLSINQEEASGTSLHQKAIMFTCHNEINAFVVL SRGSQILSLNSTRFLTKLG
 HCSSACPSDSVSQTNIQNLKGLNSPVLIGKSKDPSCVAKVSEEGKPAIGTQKMEHLHVRWRS
 DTGKCVSDAS
 PLVVIPTFDKSSSTVYIGSHSRMKAVDFYSGKVKWEQILGDRIESSACVSKCGNFIVVGCYNGL
 VYVLLK
 SNSGKEYWMFTTEDAVKSSATMDPTTGLIYIGSHDQHAYALDIYRKKCVWKSCKGGTVFSSPCLN
 LIPHH
 LYFATLGGLLAVNPATGNVIWKHSCGKPLFSSPQCSQYICIGVDGNLLCFTHFGEQVWQFSTSGP
 IF
 SSPCTSPSEQKIFFGSHDCFYCCNMKGHLQWKFETTSRVYATPFAFHNYNGSNEMLLAAASTD
 GKVWIL
 ESQSQQLQSVYELPGEVFSPPVLESMLIIGCRDNYVYCLDLLGGNQK

TRTRPLEQKLISEEDLAANDILDYKDDDDKV

Chromatograms: https://cdn.origene.com/chromatograms/mk8018_e09.zip
Restriction Sites: SgfI-MluI
Cloning Scheme:



ACCN: NM_181806
ORF Size: 3294 bp

OTI Disclaimer: The molecular sequence of this clone aligns with the gene accession number as a point of reference only. However, individual transcript sequences of the same gene can differ through naturally occurring variations (e.g. polymorphisms), each with its own valid existence. This clone is substantially in agreement with the reference, but a complete review of all prevailing variants is recommended prior to use. [More info](#)

OTI Annotation: This clone was engineered to express the complete ORF with an expression tag. Expression varies depending on the nature of the gene.

Components: The ORF clone is ion-exchange column purified and shipped in a 2D barcoded Matrix tube containing 10ug of transfection-ready, dried plasmid DNA (reconstitute with 100 ul of water).

- Reconstitution Method:**
1. Centrifuge at 5,000xg for 5min.
 2. Carefully open the tube and add 100ul of sterile water to dissolve the DNA.
 3. Close the tube and incubate for 10 minutes at room temperature.
 4. Briefly vortex the tube and then do a quick spin (less than 5000xg) to concentrate the liquid at the bottom.
 5. Store the suspended plasmid at -20°C. The DNA is stable for at least one year from date of shipping when stored at -20°C.

RefSeq: [NM_181806.4](#)
RefSeq Size: 3573 bp
RefSeq ORF: 3297 bp
Locus ID: 132949

UniProt ID: [Q4L235](#)

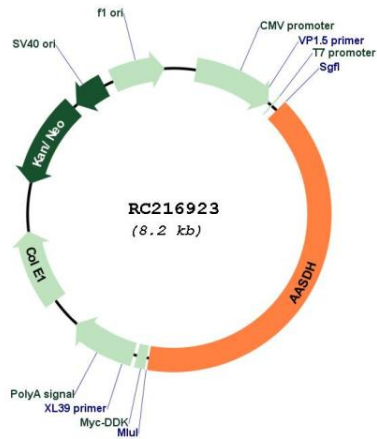
Cytogenetics: 4q12

Protein Pathways: Lysine biosynthesis, Lysine degradation, Metabolic pathways

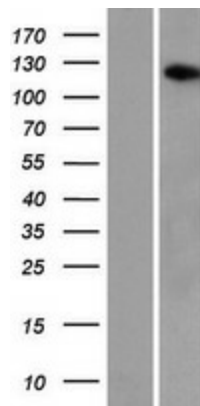
MW: 122.4 kDa

Gene Summary: This gene encodes a member of the non-ribosome peptide syntesase (NRPS) enzyme family. The encoded protein contains an AMP-binding domain, PP-binding (phosphopantetheine, or pantetheine 4'phosphate-binding) domain and the Pyrrolo-quinoline quinon (PQQ) binding domain. The protein is expressed in several adult tissues. [provided by RefSeq, Apr 2016]

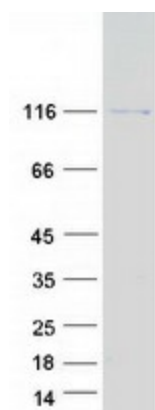
Product images:



Circular map for RC216923



Western blot validation of overexpression lysate (Cat# [LY405597]) using anti-DDK antibody (Cat# [TA50011-100]). Left: Cell lysates from untransfected HEK293T cells; Right: Cell lysates from HEK293T cells transfected with RC216923 using transfection reagent MegaTran 2.0 (Cat# [TT210002]).



Coomassie blue staining of purified AASDH protein (Cat# [TP316923]). The protein was produced from HEK293T cells transfected with AASDH cDNA clone (Cat# RC216923) using MegaTran 2.0 (Cat# [TT210002]).