

Product datasheet for **RC216919**

DPP6 (NM_001039350) Human Tagged ORF Clone

Product data:

Product Type:	Expression Plasmids
Product Name:	DPP6 (NM_001039350) Human Tagged ORF Clone
Tag:	Myc-DDK
Symbol:	DPP6
Synonyms:	DPL1; DPPX; MRD33; VF2
Mammalian Cell Selection:	Neomycin
Vector:	pCMV6-Entry (PS100001)
E. coli Selection:	Kanamycin (25 ug/mL)



[View online »](#)

ORF Nucleotide
Sequence:

>RC216919 representing NM_001039350
 Red=Cloning site Blue=ORF Green=Tags(s)

TTTTGTAATACGACTCACTATAGGGCGGCCGGAATTCGTCGACTGGATCCGGTACCGAGGAGATCTGCC
 GCC**CGGATCGCC**

ATGAAGGAAAAGGCCATGATCAAGACCGCTAAGATGCAGGGGAACGTGATGGAGCTGGTGGGGAGTAACC
 CTCGCGAGAGGAATTGGAAAGGAATAGCAATTGCACTGCTTGTCAATTCTGGTCATCTGCTCCTTGATCGT
 CACCTCGGTCATACTTCTGACACCAGCGGAAGATAATAGTCTGTCTCAAAAGAAGAAGGTCACTGTAGAA
 GATCTCTTCAGTGAAGACTTCAAATTCATGACCCCGAGGCTAAGTGGATAAGTGATACAGAATTCATCT
 ACAGAGAACAGAAAGGAACAGTGAAGTGTGGAATGTTGAAACAAATACTTCTACTGTCTTAATAGAAGG
 CAAAAAATTGAATCATTAAAGAGCCATCAGATATGAAATATCTCCAGATAGAGAGTATGCACTTTTTTCA
 TACAATGTGGAACCCATATATCAACACTCGTATACTGGATATTATGTCCTGAGCAAAATTCCTCATGGGG
 ATCCTCAAAGTCTGGACCCACCAGAAGTCAAGCAATGCAAACTTCAGTATGCAGGATGGGGCCCTAAAGG
 CCAACAGCTGATATTTATTTTTGAAAACAATATCTACTACTGTGCACATGTCGGGAAACAGGCCATCCGT
 GTGGTCTCCACTGGCAAGGAAGGTGTGATTTACAATGGCCTCAGTACTGGCTGTATGAAGAGGAGATTT
 TGAAGACACACATCGCACACTGGTGGTCTCCGGATGGCAGGACTCGCCTACGCCGCCATCAATGATTC
 CCGTGTCCCATCATGGAGCTCCCAACTTACACCGGCTCCATCTACCCACCGTGAAGCCCTACCACTAT
 CCCAAGGCTGGAAGTGAGAACCCAGCATTTCCCTACACGTTATTGGCTTAAATGGACCCACCCATGATC
 TGGAGATGATGCCGCTGATGATCCACGGATGAGGGAGTACTACATCACCATGGTGAAGTGGGCCACCAG
 CACCAAGTCCGCGTGACCTGGCTGAACCGGGCGCAGAACGTGTCCATCCTCACCTCTGCGACGCCACC
 ACGGGGGTCTGCACGAAGAAACACGAGGATGAAAGTGAAGGCTGGCTCCACAGACAGAATGAAGAACCCTG
 TGTCTCCAAGGATGGCCGAAAGTTTTTCTTTCATCAGAGCCATCCCCAGGGAGGACGAGGAAATTTCTA
 TCACATACGGTGTCTCGTCCCAGCCAAACAGCAGCAACGACAACATCCAGTCCATCACCTCCGGGGAC
 TGGGACGTGACCAAGATCCTAGCCTACGATGAGAAGGGGAATAAGATCTACTTCTGAGCACGGAGGACC
 TGCTCGGAGACGACAACTCTACAGTGCCAACACGGTGGGCAACTTCAACAGGCAGTGCCTCTCCTGTGA
 CCTGGTTGAGAACTGCACCTACTTCAGCGCTTCTTTCAGCCATAGCATGGACTTCTTCTGCTCAAGTGC
 GAAGGTCTGGTGTCTATGGTGACGGTGCACAACACAACAGATAAGAAAAAATGTTTGACCTAGAAA
 CAAATGAACATGTCAAGAAGGCCATAAATGACCGACAGATGCCTAAAGTGAATACAGGGACATTGAGAT
 TGATGATTACAACCTGCCATGCAGATACTGAAGCCAGCAACCTTACCCGACACCACCCACTACCTCTG
 CTCTGGTGGTGGATGGACCCCGGCAGCCAGAGTGTGGCTGAGAAGTTCGAGGTGAGCTGGGAGACGG
 TGATGGTGAAGCAGCCACGGCGCGGTGGTGGTAAAGTGTGACGGCCGTGGCAGCGGCTTCAAGGGACCA
 GCTCTGCACGAAGTGAAGCGGGCGGCTGGGCTTGTCTGGAGGAGAAGGACCAGATGGAGGCCGTGGGACG
 ATGCTGAAGGAGCAGTACATTGACAGGACGCGCTGGCCGTGTTGGGAAGGATTACGGTGGCTACCTGA
 GCACCTACATCCTCCAGCAAAGGGAGAAAAATCAAGGCCAGACATTCACCTGCGGCTCTGCTCTCTCTCC
 AATAACAGACTTCAAACCTATGCCTCTGCGTTTTCCGAGAGGTACTTGGGCTCCATGGACTTGACAAC
 AGAGCATACGAGATGACCAAGGTAGCCCATCGAGTCTCCGCGTGAAGAACAGCAGTTCCTGATCATT
 ATCCCAGTCCGATGAAAAAATTCATTTCCAGCACACAGCAGAACTCATTACACAATAATTAGGGGAAA
 GGCTAATTACAGCTTACAGATTTACCCGGACGAAAGCCATTACTTTACCAGCTCCAGCCTCAAACAGCAT
 CTGTACCGGTCCATCATCAACTTCTCGTGAATGCTTCAGGATCCAGGACAAACTGCTGACAGTCACAG
 CGAAAGAGGACGAGGAGGAGGAC

ACGCGTACGCGGCGGCTCGAGCAGAAACTCATCTCAGAAGAGGATCTGGCAGCAAATGATATCCTGGATT
 ACAAGGATGACGACGATAAGGTTTAA

Protein Sequence: >RC216919 representing NM_001039350
Red=Cloning site Green=Tags(s)

MKEKAMIKTAKMQGNMELVGSNPPQRNWKGIAIALLVILVICSLIVTSVILLTPAEDNSLSQKKKVTVE
DLFSEDFKIHDPEAKWISDTEFIYREQGTVRLWNVETNTSTVLEGGKIESLRAIRYEISPDREYALFS
YNVEPIYQHSYTGYYVLSKIPHGDPQSLDPPEVSNAKLQYAGWGPKGQQLIFIFENNIYYCAHVKGQAIR
VVSTGKEGVIYNGLSDWLYEEEEILKTHIAHWSPDGTRELAYAAINDSRVPIMELPTYTGSYPTVKPYHY
PKAGSENPISLHVIGLNGPTHDEMMPPDDPRMREYYITMVKWATSTKVAVTWLNRAQNVSILTLCDAT
TGVCTKKHEDESEAWLHRQNEEPVFSKDGRKFFFIRAIPOGGRGKPHYHITVSSSQPNSSNDNIQSITSGD
WDVTKILAYDEKGNKIYFLSTEDLPRRRQLYSANTVGNFNRQCLSCDLVENCTYFSASFSSMDFFLLKC
EGPGVPMVTVHNTTDKKKMFDLTNEHVKKAINDRQMPKVEYRDIEIDDYNLPMQILKPATFTDTHYPL
LLVVDGTPGSQSVAEKFEVSWETVMVSSHGAVVVKCDGRGSGFQGTLLHEVRRRLGLLEEKDQMEAVRT
MLKEQYIDRTRVAVFGDYGGYLSTYILPAKGENQGQTFTCGSALSPITDFKLYASAFSERYLGLHGLDN
RAYEMTKVAHRVSAL EEQQFLIIHPTADEKIHFOHTAELITQLIRGKANYSLQIYPDESHYFTSSSLKQH
LYRSIINFFVECFRIQDKLLTVTAKEDDEED

TRTRPLEQKLI SEEDLAANDILDYKDDDDKV

Chromatograms: https://cdn.origene.com/chromatograms/mg4119_h01.zip

Restriction Sites: Sgfl-Mlul

Reconstitution Method:

1. Centrifuge at 5,000xg for 5min.
2. Carefully open the tube and add 100ul of sterile water to dissolve the DNA.
3. Close the tube and incubate for 10 minutes at room temperature.
4. Briefly vortex the tube and then do a quick spin (less than 5000xg) to concentrate the liquid at the bottom.
5. Store the suspended plasmid at -20°C. The DNA is stable for at least one year from date of shipping when stored at -20°C.

Note: Plasmids are not sterile. For experiments where strict sterility is required, filtration with 0.22um filter is required.

RefSeq: [NM_001039350.3](#)

RefSeq Size: 4571 bp

RefSeq ORF: 2406 bp

Locus ID: 1804

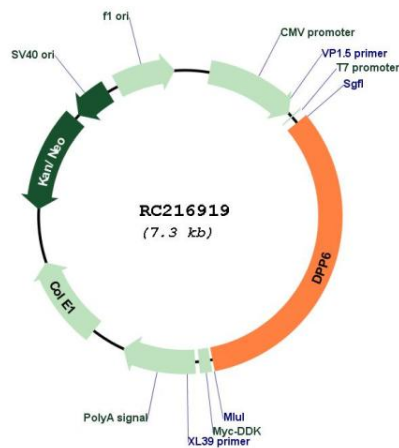
Cytogenetics: 7q36.2

Protein Families: Druggable Genome, Protease, Transmembrane

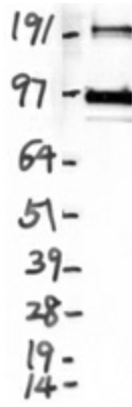
MW: 91.1 kDa

Gene Summary: This gene encodes a single-pass type II membrane protein that is a member of the peptidase S9B family of serine proteases. This protein has no detectable protease activity, most likely due to the absence of the conserved serine residue normally present in the catalytic domain of serine proteases. However, it does bind specific voltage-gated potassium channels and alters their expression and biophysical properties. Variations in this gene may be associated with susceptibility to amyotrophic lateral sclerosis and with idiopathic ventricular fibrillation. Alternative splicing results in multiple transcript variants. [provided by RefSeq, Mar 2014]

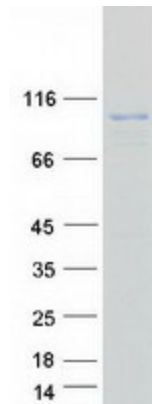
Product images:



Circular map for RC216919



Western blot validation of overexpression lysate (Cat# [LY422033]) using anti-DDK antibody (Cat# [TA50011-100]). Left: Cell lysates from untransfected HEK293T cells; Right: Cell lysates from HEK293T cells transfected with RC216919 using transfection reagent MegaTran 2.0 (Cat# [TT210002]).



Coomassie blue staining of purified DPP6 protein (Cat# [TP316919]). The protein was produced from HEK293T cells transfected with DPP6 cDNA clone (Cat# RC216919) using MegaTran 2.0 (Cat# [TT210002]).