

Product datasheet for **RC216917**

STEAP4 (NM_024636) Human Tagged ORF Clone

Product data:

Product Type:	Expression Plasmids
Product Name:	STEAP4 (NM_024636) Human Tagged ORF Clone
Tag:	Myc-DDK
Symbol:	STEAP4
Synonyms:	SchLAH; STAMP2; TIARP; TNFAIP9
Mammalian Cell Selection:	Neomycin
Vector:	pCMV6-Entry (PS100001)
E. coli Selection:	Kanamycin (25 ug/mL)



[View online »](#)

ORF Nucleotide Sequence:

>RC216917 representing NM_024636
 Red=Cloning site Blue=ORF Green=Tags(s)

TTTTGTAATACGACTCACTATAGGGCGGCCGGAATTCGTCGACTGGATCCGGTACCGAGGAGATCTGCC
 GCC**CGCATCGCC**

ATGGAGAAAACCTGTATAGATGCACTTCCTCTTACTATGAATTCCTCAGAAAAGCAAGACTGTATGTA
 TTTTGGAACTGGTGATTTTGGAAAGATCACTGGGATTGAAAATGCTCCAGTGTGGTTATTCTGTTGTTTT
 TGGAAAGTCGAAACCCCGAGAAGACCACCCTACTGCCAGTGGTGCAGAAGCTTGAGCTATTCAGAAGCA
 GCCAAGAAGTCTGACATCATAATCATAGCAATCCACAGAGACATTATGATTTTTCTCACAGAATTAAGT
 AGGTTCTCAATGGAAAAATATTGGTAGACATCAGCAACAACCTCAAAATCAATCAATATCCAGAATCTAA
 TGCAGAGTACCTTGCTCATTGGTGCCAGGAGCCACGTGGTAAAAGCATTTAACACCATCTCAGCCTGG
 GCTCTCCAGTCAAGGACTGGATGCAAGTCGGCAGGTGTTGTGTGGAAATGACAGCAAAGCCAAGC
 AAAGAGTGATGGATATTGTCGAATCTTGGACTTACTCCAATGGATCAAGGACTACTCATGGCAGCCAA
 AGAAATTGAAAAGTACCCCTGCAGCTATTTCCAATGTGGAGTTCCTCTTCTATTTGTCTGCTGTGCTG
 TGTGCTTCTTGTGTTTTCTATTGTGTTATAAGAGACGTAATCTACCCCTATGTTTATGAAAAGAAAGATA
 ATACATTCGTATGGCTATTTCCATTCCAAATCGTATCTTTCCAATAACAGCACTTACACTGCTTGCTTT
 GGTTTACCTCCCTGGTGTATTGCTGCCATTCTACAACGTACCGAGGCACAAAATACCGTCGATTTCCCA
 GACTGGCTTGACCACTGGATGCTTTGCCGAAAGCAGCTTGGCTTGGTAGCTCTGGGATTTGCCTTCTTC
 ATGTCCTCTACACACTTGTGATTCTATTCGATATTATGTACGATGGAGATTGGGAAACTTAACCGTTAC
 CCAGGCAATACTCAAGAAGGAGAATCCATTTAGCACCTCTCAGCCTGGCTCAGTGATTCATATGTGGCT
 TTGGGAATACTTGGGTTTTTCTGTTTGTACTCTTGGGAATCACTCTTTGCCATCTGTTAGCAATGCAG
 TCAACTGGAGAGAGTCCGATTTGTCCAGTCCAAACTGGGTTATTTGACCCTGATCTTGTACAGCCCA
 CACCCTGGTGTACGGTGGGAAGAGATTCCTCAGCCCTTCAAATCTCAGATGGTATCTTCTGCAGCCTAC
 GTGTTAGGCTTATCATTCTTGCAGTGTGCTGGTATCAAGTTTGCCTAATCATGCCATGTGTAGACA
 ACACCCTTACAAGGATCCGCCAGGGCTGGGAAAGGAACCTCAAACAC

ACGCGTACGCGGCCGCTCGAGCAGAAACTCATCTCAGAAGAGGATCTGGCAGCAAATGATATCCTGGATT
 ACAAGGATGACGACGATAAGGTTTAA

Protein Sequence:

>RC216917 representing NM_024636
 Red=Cloning site Green=Tags(s)

MEKTCIDALPLTMNSSEKQETVCIFGTGDFGRSLGLKMLQCGYSVVFGRNPQKTTLLPSGAEVLSYSEA
 AKKSDIIIIAIIHREHYDFLTELTEVLNGKILVDISNNLKINQYEPESNAEYLAHLVPGAHVVKAFNTISAW
 ALQSGALDASRQVFVCGNDSKAKQRVMDIVRNGLTPMDQGSMAAKEIEKYPLQLFPMWRFPFYLSAVL
 CVFLFFYCVIRDVIYPYVYEKDNTRFMAISIPNRIFPITALLLALVYLPGVIAAILQLYRGTKYRRFP
 DWLDHWMLCRKQLGLVALGFAFLHVLYTLVIPIRYVWRWLNLTVTQAILKKENPFSTSSAWLSDSYVA
 LGILGFFLVLLGITSLPSVSNVNWREFRFVQSKLGYLTLILCTAHTLVYGGKRFLSPSNLRWYLPAA
 VLGLIIPCTVLVIKIVLIMPCVDNLTTRIRQGWERNKSH

TRTRPLEQKLISEEDLAANDILDYKDDDDKV

Chromatograms:

https://cdn.origene.com/chromatograms/mg2494_a07.zip

Restriction Sites:

Sgfl-Mlul

Cloning Scheme:


ACCN: NM_024636

ORF Size: 1377 bp

OTI Disclaimer: The molecular sequence of this clone aligns with the gene accession number as a point of reference only. However, individual transcript sequences of the same gene can differ through naturally occurring variations (e.g. polymorphisms), each with its own valid existence. This clone is substantially in agreement with the reference, but a complete review of all prevailing variants is recommended prior to use. [More info](#)

OTI Annotation: This clone was engineered to express the complete ORF with an expression tag. Expression varies depending on the nature of the gene.

Components: The ORF clone is ion-exchange column purified and shipped in a 2D barcoded Matrix tube containing 10ug of transfection-ready, dried plasmid DNA (reconstitute with 100 ul of water).

Reconstitution Method:

1. Centrifuge at 5,000xg for 5min.
2. Carefully open the tube and add 100ul of sterile water to dissolve the DNA.
3. Close the tube and incubate for 10 minutes at room temperature.
4. Briefly vortex the tube and then do a quick spin (less than 5000xg) to concentrate the liquid at the bottom.
5. Store the suspended plasmid at -20°C. The DNA is stable for at least one year from date of shipping when stored at -20°C.

RefSeq: [NM_024636.4](#)

RefSeq Size: 4454 bp

RefSeq ORF: 1380 bp

Locus ID: 79689

UniProt ID: [Q687X5](#)

Cytogenetics: 7q21.12

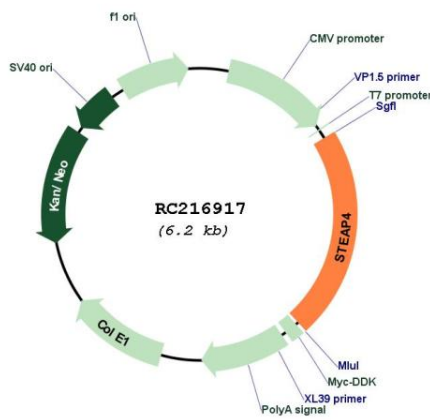
Domains: F420_oxidored

Protein Families: Druggable Genome, Transmembrane

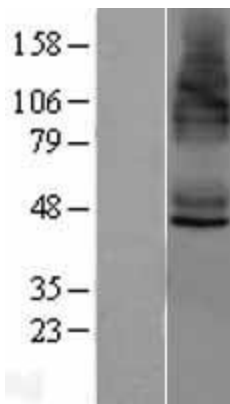
MW: 51.8 kDa

Gene Summary: The protein encoded by this gene belongs to the STEAP (six transmembrane epithelial antigen of prostate) family, and resides in the golgi apparatus. It functions as a metalloredutase that has the ability to reduce both Fe(3+) to Fe(2+) and Cu(2+) to Cu(1+), using NAD(+) as acceptor. Studies in mice and human suggest that this gene maybe involved in adipocyte development and metabolism, and may contribute to the normal biology of the prostate cell, as well as prostate cancer progression. Alternatively spliced transcript variants encoding different isoforms have been found for this gene. [provided by RefSeq, Apr 2011]

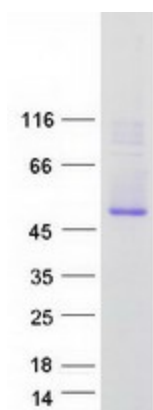
Product images:



Circular map for RC216917



Western blot validation of overexpression lysate (Cat# [LY403020]) using anti-DDK antibody (Cat# [TA50011-100]). Left: Cell lysates from untransfected HEK293T cells; Right: Cell lysates from HEK293T cells transfected with RC216917 using transfection reagent MegaTran 2.0 (Cat# [TT210002]).



Coomassie blue staining of purified STEAP4 protein (Cat# [TP316917]). The protein was produced from HEK293T cells transfected with STEAP4 cDNA clone (Cat# RC216917) using MegaTran 2.0 (Cat# [TT210002]).