

Product datasheet for **RC216911**

A1CF (NM_138933) Human Tagged ORF Clone

Product data:

Product Type:	Expression Plasmids
Product Name:	A1CF (NM_138933) Human Tagged ORF Clone
Tag:	Myc-DDK
Symbol:	A1CF
Synonyms:	ACF; ACF64; ACF65; APOBEC1CF; ASP
Mammalian Cell Selection:	Neomycin
Vector:	pCMV6-Entry (PS100001)
E. coli Selection:	Kanamycin (25 ug/mL)



[View online »](#)

ORF Nucleotide Sequence:

>RC216911 representing NM_138933
 Red=Cloning site Blue=ORF Green=Tags(s)

TTTTGTAATACGACTCACTATAGGGCGGCCGGGAATTCGTCGACTGGATCCGGTACCGAGGAGATCTGCC
 GCC**CGCATCGCC**

ATGGAAGCAGTGTGTCTGGGCACATGCCAGAGCCAGAAGCGAGCATGAGCACAGCAATTCCTGGCCTCA
 AAAAAGGAAATAATGCTTTGCAGTCCATCATTTTGCAAACCTTTGCTGGAAAAGGAAAATGGACAAAGAAA
 ATATGGTGGCCCTCCACCTGGTTGGGATGCTGCACCCCTGAAAGGGGCTGTGAAATTTTTATTGGAAAA
 CTTCCCGAGACCTTTTTGAGGATGAGCTTATACCATTATGTGAAAAATCGGTAAAATTTATGAAATGA
 GAATGATGATGGATTTTAAATGGCAACAATAGAGGATATGCATTTGTAACATTTTCAAATAAAGTGGAAAGC
 CAAGAATGCAATCAAGCAACTTAATAATTATGAAATTAGAAATGGGCGCCTCTTAGGGGTTTGTGCCAGT
 GTGGACAACCTGCCGATTATTTGTTGGGGGCATCCAAAAACAAAAGAGAGAAGAAATCTTATCGGAGA
 TAAAAAGGTTACTGAAGGTGTTGTCGATGTCATCGTCTACCAAGCGCTGCAGATAAAACAAAACCCG
 AGGCTTTGCCTTCTGGAGTATGAGAGTCATCGAGCAGCTGCCATGGCGAGGAGGAACTGCTACCAGGA
 AGAATTCAGTTATGGGGACATGGTATTGCAGTAGACTGGGCGAGGCCAGAAGTAGAAGTTGATGAAGATA
 CAATGTCTTCAGTGAAAACTCTATATGTAAAGAAATCTTATGCTGTCTACCTCTGAAGAGATGATTAAAA
 GGAATTCACAATATCAAACCAGGTGCTGTGGAGAGGGTGAAGAAAATTCGAGACTATGCTTTTGTGCAC
 TTCAGTAACCGAGAAGATGCAGTTGAGGCTATGAAAGCTTTAAATGGCAAGGTGCTGGATGGTCCCCCA
 TTGAAGTCACCCTAGCAAAACAGTGGACAAGGACAGTTATGTTAGGTATACCCGAGGCACAGGTGGAAAG
 GGGCACCATGCTGCAAGGAGAGTATACCTACTCTTTGGCCAAGTTTATGATCCCACCACAACCTACCTT
 GGAGCTCCTGTCTTCTATGCCCCAGACCTATGCAGCAATCCCAGTCTTCATTTCCAGCCAAAAG
 GACATCTCAGCAACAGAGCCATTATCCGAGCCCTTCTGTTAGAGGGGCTGCGGGGATGAGAGACTGGG
 CGGCCGTGGCTATTTGGCATACACAGGCCCTGGGTCGAGGATACAGGTCAAAGGAGACAAAAGAGAAGAC
 AAATCTATGACATTTTACCTGGGATGGAGCTCACCCCAATGAATCCTGTACATTTAAACCCCAAGGAA
 TTAACCTCGTCCCAGATATTAGAAGAGATTTGTGAGAAAAATAACTGGGGACAGCCAGTGTACCAGCT
 GCACTCTGCTATTGGACAAGACCAAGACAGCTATTCTTGTACAAAAATACTATTCTGCTCTAGCCAGC
 CAGAATCTGCAATCCACCCTTTCACACCTCAAAGCTGAGTGCCTTTGTGGATGAAGCAAAGACGTATG
 CAGCCGAATACACCCTGCAGACCCTGGGCATCCCCTGATGGAGGCGATGGCACCATGGCTACTGCTGC
 TGCTGCTGCTACTGCTTTCCAGGATATGCTGTCCCTAATGCAACTGCACCCGTGTCTGCAGCCAGCTC
 AAGCAAGCGGTAACCCTGGACAAGACTTAGCAGCATATACAACCTATGAGGTCTACCAACTTTTGCAG
 TACTGCCCGAGGGGATGGATATGGCACCTTC

ACGCGTACGCGGCCGCTCGAGCAGAAACTCATCTCAGAAGAGGATCTGGCAGCAAATGATATCCTGGATT
 ACAAGGATGACGACGATAAGGTTTAA

Protein Sequence:

>RC216911 representing NM_138933
 Red=Cloning site Green=Tags(s)

MEAVCLGTCPEPEASMSTAIPGLKKGNNALQSIILQTLLEKENGQRKYGGPPPGWDAAPPERGCEIFIGK
 LPRDLFEDELIPLCEKIGKIYEMRMMDFNGNNRQYAFVTF SNKVEAKNAIKQLNNYEIRNGRLLGVCAS
 VDNCRFLVGGIPKTKKREEILSEMKKVTEGVVDVIVYPSAADKTKNRGF AFVEYESHRAAAMARRKLLPG
 RIQLWGHGIAVDWAEPEVEDEDTMSSVKILYVRNLMLSTSEEMIEKEFNINIKPGAVERVKKIRDYAFVH
 FSNREDAVEAMKALNGKVL DGSPIEVTLAKPVDKDSYVRYTRGTGGRGTM LQGEYTYSLGQVYDPTTTYL
 GAPVFYAPQTYAAIPSLHFPATKGHL SNRAIIRAPSVRGAAGVRGLGGRGYLAYTGLGRGYQVKGDKRED
 KLYDILPGMELTPMNPVTLKPQGIK LAPQILEEICQKNNWGPVYQLHSAIGDQDRQLFLYKITIPALAS
 QNPAIHFP TPKLSAFVDEAKTYAAEYTLQTLGIPTDGGDGMATAAAAAATAFPGYAVPNATAPVSAAQL
 KQAVTLGQDLAAYTTYEVYPTFAVTARGDGYGTF

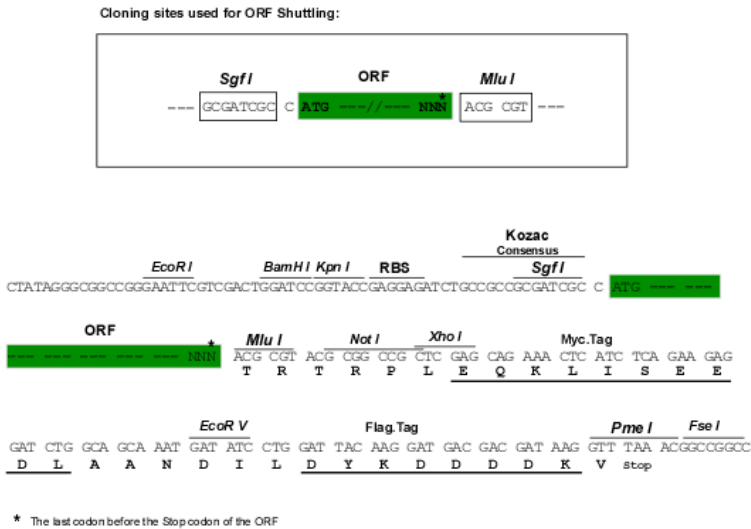
TRTRPLEQKLISEEDLAANDILDYKDDDDKV

Chromatograms:

https://cdn.origene.com/chromatograms/mk6606_b04.zip

Restriction Sites: SgfI-MluI

Cloning Scheme:



ACCN: NM_138933

ORF Size: 1782 bp

OTI Disclaimer: The molecular sequence of this clone aligns with the gene accession number as a point of reference only. However, individual transcript sequences of the same gene can differ through naturally occurring variations (e.g. polymorphisms), each with its own valid existence. This clone is substantially in agreement with the reference, but a complete review of all prevailing variants is recommended prior to use. [More info](#)

OTI Annotation: This clone was engineered to express the complete ORF with an expression tag. Expression varies depending on the nature of the gene.

Components: The ORF clone is ion-exchange column purified and shipped in a 2D barcoded Matrix tube containing 10ug of transfection-ready, dried plasmid DNA (reconstitute with 100 ul of water).

Reconstitution Method:

1. Centrifuge at 5,000xg for 5min.
2. Carefully open the tube and add 100ul of sterile water to dissolve the DNA.
3. Close the tube and incubate for 10 minutes at room temperature.
4. Briefly vortex the tube and then do a quick spin (less than 5000xg) to concentrate the liquid at the bottom.
5. Store the suspended plasmid at -20°C. The DNA is stable for at least one year from date of shipping when stored at -20°C.

RefSeq: [NM_138933.2](#), [NP_620311.1](#)

RefSeq Size: 2223 bp

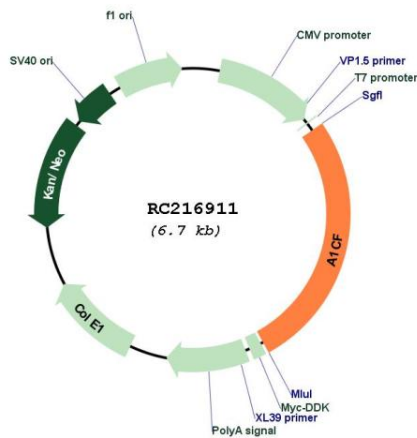
RefSeq ORF: 1785 bp

Locus ID: 29974

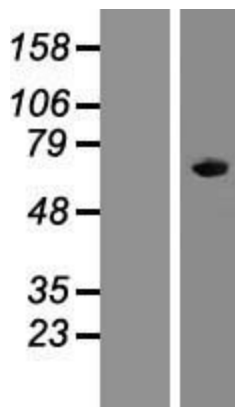
UniProt ID: [Q9NQ94](#)
 Cytogenetics: 10q11.23
 MW: 64.8 kDa

Gene Summary: Mammalian apolipoprotein B mRNA undergoes site-specific C to U deamination, which is mediated by a multi-component enzyme complex containing a minimal core composed of APOBEC-1 and a complementation factor encoded by this gene. The gene product has three non-identical RNA recognition motifs and belongs to the hnRNP R family of RNA-binding proteins. It has been proposed that this complementation factor functions as an RNA-binding subunit and docks APOBEC-1 to deaminate the upstream cytidine. Studies suggest that the protein may also be involved in other RNA editing or RNA processing events. Several transcript variants encoding a few different isoforms have been found for this gene. [provided by RefSeq, Nov 2010]

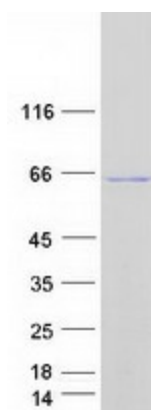
Product images:



Circular map for RC216911



Western blot validation of overexpression lysate (Cat# [LY408476]) using anti-DDK antibody (Cat# [TA50011-100]). Left: Cell lysates from untransfected HEK293T cells; Right: Cell lysates from HEK293T cells transfected with RC216911 using transfection reagent MegaTran 2.0 (Cat# [TT210002]).



Coomassie blue staining of purified A1CF protein (Cat# [TP316911]). The protein was produced from HEK293T cells transfected with A1CF cDNA clone (Cat# RC216911) using MegaTran 2.0 (Cat# [TT210002]).