

Product datasheet for **RC216910**

KRT72 (NM_080747) Human Tagged ORF Clone

Product data:

Product Type:	Expression Plasmids
Product Name:	KRT72 (NM_080747) Human Tagged ORF Clone
Tag:	Myc-DDK
Symbol:	KRT72
Synonyms:	CK-72; K6irs; K6IRS2; K72; KRT6; KRT6IRS2
Mammalian Cell Selection:	Neomycin
Vector:	pCMV6-Entry (PS100001)
E. coli Selection:	Kanamycin (25 ug/mL)



[View online »](#)

ORF Nucleotide Sequence:

>RC216910 representing NM_080747
 Red=Cloning site Blue=ORF Green=Tags(s)

TTTTGTAATACGACTCACTATAGGGCGGCCGGGAATTCGTCGACTGGATCCGGTACCGAGGAGATCTGCC
 GCC**CGGATCGCC**

ATGAGCCGCCAACTGACCCATTTCCCCCGGGGAGCGCTGGGTTTTCAGCGGTTGCTCCGCGGTCTCT
 CTGGCGGGATCGGCAGCAGCTCCGCCTCATTCCGGGCCCGGGTCAAGGGCTCGGCCTCCTTTGGCAGCAA
 GAGCCTCTCTGCCTTGGGGGCAGCCGAAGCTGGCGCTCAGCGCTGCTGCACGGCGGGCGGGCGCCGC
 CTGGGCGGCTTCTGGGACCCGCTTCCGCAGCGCCGGGCTGGGGCCAAAGTGTCCCTCCGTGTGCCAC
 CCGGGGGCATCCCTCAGGTCAACGTCACCAAGAGCCTCCTGGCCCGCTCAACGTGGAGATGGACCCGA
 GATCCAGAGGGTGCAGCGCCAGGAGCGGGAGCAGATCAAGGCGCTAAACAACAAGTTGCGCTCCTTCATC
 GACAAGGTGCGGTTCTGGAGCAGCAGAATCAGGTGCTAGAGACCAAGTGAACCTCTACAGCAGCTGG
 ACTTGAACAACCTGCAGGAAGAACCTGGAGCCATTTATGAGGGCTACATCAGCAACCTGCAGAAGCAGCT
 GGAGATGCTGTCTGGGGACGGGTTGAGGCTGGATTCGGAGCTGAGGAACATGCAGGATTTGGTGGAGGAC
 TACAAGAAGAGGTATGAGGTGGAGATTAACAGACGCACAGCTGCTGAGAAATGAGTTTGTGGTGTCAAGA
 AGGACGTGGATGCTGCTTACATGAATAAGTTGAGCTCCAGGCCAAGGTGGACTCCTTGACAGATGAGAT
 TAAATTCTTCAAGTGCCTTTATGAAGGGGAGATCACTCAGATCCAGTCCCACATCAGCGACACGTCCATC
 GTCCTGTCAATGGACAACAACCGGGATCTGGACCTGGACAGCATCATTGCCGAGTCCGTGCCAGTACG
 AGGAGATTGCCCTAAAGAGCAAGCCGAGGCTGAGACCTGTACCAGACCAAGATCCAGGAGCTGCAGGT
 CACAGCAGGCCAGCATGGGGATGACCTCAAGCTCACCAAGGCTGAAATCTCTGAGCTCAACCGCTGATC
 CAGAGGATCCGCTCAGAGATAGGGAATGTGAAGAAGCAGTGTGCCGATCTGGAGACGGCCATCGCCGAC
 CTGAACAGCGGGGGGACTGCGCCCTGAAAGATGCCCGGGCCAAGCTGGATGAGCTGGAGGGCGCCCTGCA
 CCAGGCCAAGGAGGAGCTGGCACGGATGCTGCGTGAGTACCAGGAGCTCGTGAGCCTGAAGCTGGCCCTG
 GATATGGAGATCGCCACCTACCGCAAGCTGCTGGAGAGCGAGGATGCAGGATGCTGGCAATATCCAA
 ATTCTGTGAGCATCTCCGTATCAGCAGCACCAATGCTGGGGCAGGAGGGGCTGGCTTACAGATGGGCTT
 TGGCGCTCAAGCAGTTATAGCTACAAAACCTGCAGCTGCAGACGTCAAGACCAAAGGCAGCTGTGGCAGT
 GAGCTCAAGGATCCCCTTGCCAAAACCTCGGGGAGCAGCTGTGCCACAAAAGGCTCCAGA

ACGCGTACGCGGCCGCTCGAGCAGAACTCATCTCAGAAGAGGATCTGGCAGCAAATGATATCTGGATT
 ACAAGGATGACGACGATAAGGTTTAA

Protein Sequence:

>RC216910 representing NM_080747
 Red=Cloning site Green=Tags(s)

MSRQLTHFPRGERLGFSGCSAVLSGGIGSSSASFRARVKGSAFSGSKLSLGLGSRSLALSAARRGGGR
 LGGFVGTAFGSAGLGPKCPSVCPGGIPQVTVNKSLAPLNVEMDPEIQRVRAQEREQIKALNNKFASFI
 DKVRFLEQQNQVLETKWNLLQQLDLNCRKNLEPIYEGYISNLQKQLEMLSGDGVRLDSELRNMQDLVED
 YKKRYEVEINRRTAAENEFVVLKDVDAAYMNKVELQAKVDSL TDEIKFFKLYEGEITQIQSHISDTSI
 VLSMDNRRDLDLDSIIAEVRAQYEEIALKSKAEETLYQTKIQELQVTAGQHGDLLKTKAEISELNRLI
 QRIRSEIGNVKKQCADLETAIADAEQRGDCALKDARAKLDELEGALHQAKEELARMLREYQELVSLKLAL
 DMEIATYRKLLESEECRMSGEYPNSVSVISSTNAGAGGAGFSMGFGASSYSYKTAADVKTGSCGS
 ELKDPLAKTSGSSCATKKASR

TRTRPLEQKLISEEDLAANDILDYKDDDDKV

Chromatograms:

https://cdn.origene.com/chromatograms/mk8018_e10.zip

Restriction Sites:

Sgfl-Mlul

Cloning Scheme:


ACCN: NM_080747

ORF Size: 1533 bp

OTI Disclaimer: The molecular sequence of this clone aligns with the gene accession number as a point of reference only. However, individual transcript sequences of the same gene can differ through naturally occurring variations (e.g. polymorphisms), each with its own valid existence. This clone is substantially in agreement with the reference, but a complete review of all prevailing variants is recommended prior to use. [More info](#)

OTI Annotation: This clone was engineered to express the complete ORF with an expression tag. Expression varies depending on the nature of the gene.

Components: The ORF clone is ion-exchange column purified and shipped in a 2D barcoded Matrix tube containing 10ug of transfection-ready, dried plasmid DNA (reconstitute with 100 ul of water).

Reconstitution Method:

1. Centrifuge at 5,000xg for 5min.
2. Carefully open the tube and add 100ul of sterile water to dissolve the DNA.
3. Close the tube and incubate for 10 minutes at room temperature.
4. Briefly vortex the tube and then do a quick spin (less than 5000xg) to concentrate the liquid at the bottom.
5. Store the suspended plasmid at -20°C. The DNA is stable for at least one year from date of shipping when stored at -20°C.

RefSeq: [NM_080747.3](#)

RefSeq Size: 1985 bp

RefSeq ORF: 1536 bp

Locus ID: 140807

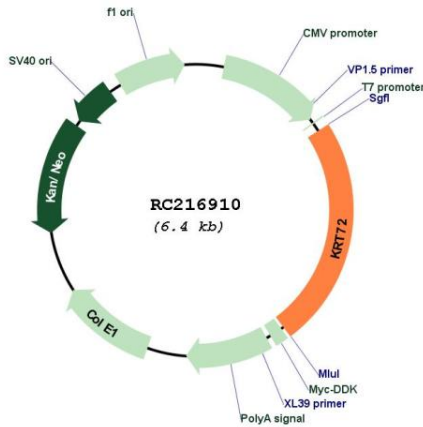
UniProt ID: [Q14CN4](#)

Cytogenetics: 12q13.13

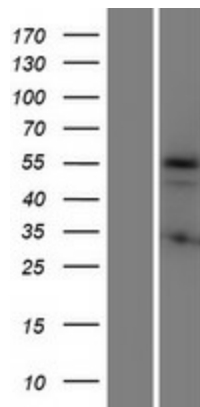
MW: 55.7 kDa

Gene Summary: Keratins are intermediate filament proteins responsible for the structural integrity of epithelial cells. The type II keratins consist of basic or neutral proteins which are arranged in pairs of heterotypic keratin chains coexpressed during differentiation of simple and stratified epithelial tissues. This gene encodes a type II keratin that is specifically expressed in the inner root sheath of hair follicles. The type II keratins are clustered in a region of chromosome 12q12-q13. Multiple transcript variants encoding different isoforms have been found for this gene.[provided by RefSeq, Jun 2009]

Product images:



Circular map for RC216910



Western blot validation of overexpression lysate (Cat# [LY409064]) using anti-DDK antibody (Cat# [TA50011-100]). Left: Cell lysates from untransfected HEK293T cells; Right: Cell lysates from HEK293T cells transfected with RC216910 using transfection reagent MegaTran 2.0 (Cat# [TT210002]).