

## Product datasheet for **RC216902**

### CCDC198 (NM\_018168) Human Tagged ORF Clone

#### Product data:

Product Type:	Expression Plasmids
Product Name:	CCDC198 (NM_018168) Human Tagged ORF Clone
Tag:	Myc-DDK
Symbol:	CCDC198
Synonyms:	C14orf105
Mammalian Cell Selection:	Neomycin
Vector:	pCMV6-Entry (PS100001)
E. coli Selection:	Kanamycin (25 ug/mL)
ORF Nucleotide Sequence:	>RC216902 ORF sequence Red=Cloning site Blue=ORF Green=Tags(s)

TTTTGTAATACGACTCACTATAGGGCGGCCGGAATTCGTCGACTGGATCCGGTACCGAGGAGATCTGCC  
GCC**CGGATCGCC**

ATGGGCTGAGTCACTCTAAGACTCACCTTAGGGTGATCAAAGTAGCACCTTTGCAAAACAAAGAGGTAG  
AGACTCCCTCGGCTGGCCGTGTGGACTTTGCATTCAATCAGAATTTGGAAGAAAAGACTTCATATCACT  
GGCAAGACTGCAGGACCAGAATAAAGCCTTGAAGGGCAGCTGCCACCTTTACAAGAAAAGTGGTATGGA  
AGATATTTCTACAGCATCCAGAGACATGTATTTGACATCCCACTGGAACACAGAGAAAACAAGTATTATTA  
AAAGGCATCCACCCAAAGACTTCAAAGCTTGAACCCATTGACTTGCCACGAGTAATTACTTCAGGAAG  
ACTCCTGAGCCAGCGAGAAGCCAGGACAATGCACAAGCAAAGGTAAGAAAAGAAAATGCAAACCTCCA  
ATGTATACTTCTGAGAACAGACAATATTTGCATAAGATGCAAGTCTGGAAATGATCCGTAAGGACAAG  
AGGCCAAATGGAGTTAAAGAAAAGTCTTCATGGAGAGGCAAGAATTAATAAGCAAAGTCCAAGGGACCA  
TAAAGCCAAGAAAACCTTCAAAGCACCCCAAGGAATGATGACCATGACCTTCTAACCATGTTGCCTGAT  
GAAATCTTGAACAGAGGTCCCGGAAATCAAAGAATACAGAAATTTTGAACATCAAGCAGTGAATAACT  
GCTGTCCCTGGAAAATTTGGCAAATGGAACATGGCTTCATGAACAAGAGGCCAGGGACAGCTTCTCTG  
GGACAGTTCAGCTCTGACTCAGATGAGCAGGGGAAAGATGAGAAGAAGCCACGAGCACTGGTGAGAACC  
AGGACAGAGAGAATCCCACCTTTTCGATGAGTTTTTTGATCAAGAA

**ACGCGT**ACGCGGCCGCTCGAGCAGAAAACCTCATCTCAGAAGAGGATCTGGCAGCAAATGATATCCTGGATT  
ACAAGGATGACGACGATAAGGTTTAA



[View online »](#)

**Protein Sequence:** >RC216902 protein sequence  
Red=Cloning site Green=Tags(s)

MGLSHSKTHLRVIK VAPLQNKEVETPSAGRVDFAFNQNL EEKTSYSLARLQDQNKALEGQLPPLQENWYG  
 RYSTASRD MYFDIPL EHR ETSIIKRHP PQR LQKLEPIDLPRVITSGRLLSQREARTMHKAKVLEKKMQTP  
 MYTSEN RQYLHKMQVLEMIRKRQEAQMELK KSLHG EARINKQSPRDHKAKKTLQSTPRNDDHDL L TMLPD  
 EILNRGPGNSKNTEFLKHQAVNNCCPWKIGKMETW LHEQEAQGQLLWDSSSSDSDSEQGKDEKKPRALVRT  
 RTERIPLFDEFDQE

TRTRPLEQKLISEEDLAANDILDYKDDDDKV

**Chromatograms:** [https://cdn.origene.com/chromatograms/mk6464\\_d04.zip](https://cdn.origene.com/chromatograms/mk6464_d04.zip)

**Restriction Sites:** SgfI-MluI

**Cloning Scheme:**



**ACCN:** NM\_018168

**ORF Size:** 716 bp

**OTI Disclaimer:** The molecular sequence of this clone aligns with the gene accession number as a point of reference only. However, individual transcript sequences of the same gene can differ through naturally occurring variations (e.g. polymorphisms), each with its own valid existence. This clone is substantially in agreement with the reference, but a complete review of all prevailing variants is recommended prior to use. [More info](#)

**OTI Annotation:** This clone was engineered to express the complete ORF with an expression tag. Expression varies depending on the nature of the gene.

**Components:** The ORF clone is ion-exchange column purified and shipped in a 2D barcoded Matrix tube containing 10ug of transfection-ready, dried plasmid DNA (reconstitute with 100 ul of water).

**Reconstitution Method:**

1. Centrifuge at 5,000xg for 5min.
2. Carefully open the tube and add 100ul of sterile water to dissolve the DNA.
3. Close the tube and incubate for 10 minutes at room temperature.
4. Briefly vortex the tube and then do a quick spin (less than 5000xg) to concentrate the liquid at the bottom.
5. Store the suspended plasmid at -20°C. The DNA is stable for at least one year from date of shipping when stored at -20°C.

**RefSeq:** [NM\\_018168.4](#)

**RefSeq Size:** 3094 bp

**RefSeq ORF:** 891 bp

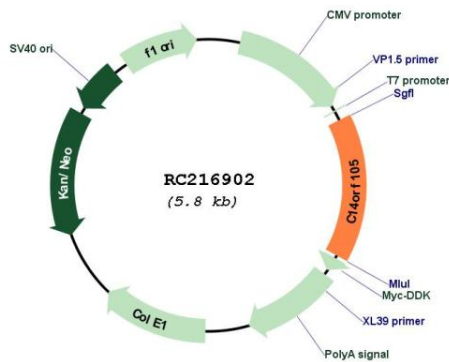
**Locus ID:** 55195

**UniProt ID:** [Q9NVL8](#)

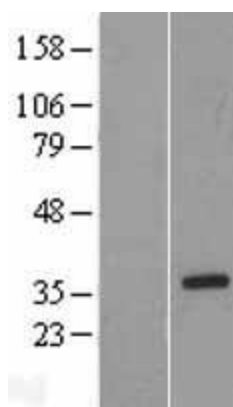
**Cytogenetics:** 14q22.3

**MW:** 34.5 kDa

**Product images:**



Circular map for RC216902



Western blot validation of overexpression lysate (Cat# [LY413265]) using anti-DDK antibody (Cat# [TA50011-100]). Left: Cell lysates from untransfected HEK293T cells; Right: Cell lysates from HEK293T cells transfected with RC216902 using transfection reagent MegaTran 2.0 (Cat# [TT210002]).