

Product datasheet for **RC216900**

POTEB3 (NM_207355) Human Tagged ORF Clone

Product data:

Product Type:	Expression Plasmids
Product Name:	POTEB3 (NM_207355) Human Tagged ORF Clone
Tag:	Myc-DDK
Symbol:	POTEB3
Synonyms:	POTE-15; POTE B
Mammalian Cell Selection:	Neomycin
Vector:	pCMV6-Entry (PS100001)
E. coli Selection:	Kanamycin (25 ug/mL)



[View online »](#)

ORF Nucleotide Sequence:

>RC216900 ORF sequence
 Red=Cloning site Blue=ORF Green=Tags(s)

TTTTGTAATACGACTCACTATAGGGCGGCCGGAATTCGTCGACTGGATCCGGTACCGAGGAGATCTGCC
 GCC**CGGATCGCC**

ATGGTGGCTGAGTTTGTCAATGCCCGCTGCCTCTGCTGTGAAGAAGCCATTTGATCTCAGGAGCAAGA
 TGGGCAAGTGGTCCACCACCGCTTCCCCTGCTGCAGGGGAGCGCAAGAGCAACATGGGCACTTCTGG
 AGACCACGACGACTCCTTTATGAAGACGCTCAGGAGCAAGATGGGCAAGTGTGCCACCCTGCTCCCC
 TGCTGCAGGGGAGCGGCACGAGCAATGTGGGCACTTCTGGAGACCATGACAACCTCTTTATGAAGACAC
 TCAGGAGCAAGATGGGCAAGTGGTGTCTGCTGCTTCCCCTGCTGCAGGGGAGCGCAAGAGCAACGT
 GGGCACTTGGGGAGACTACGACGACAGCGCCTTCATGGAGCCGAGGTACCACGTCCTCGAGAAGATCTG
 GACAAGCTCCACAGAGCTGCCTGGTGGGTAAAGTCCCCAGAAAGGATCTCATCGTCATGCTCAGGGACA
 CTGACATGAACAAGAGGGACAAGCAAAAAGAGGACTGCTCTACATTTGGCCTCTGCCAATGGAATTCAGA
 AGTAGTACAACCTCTGCTGGACAGACGATGTCACTTAACGTCCTTGACAACAAAAAAGGACAGCTCTG
 ATAAAGGCCGTACAATGCCAGGAAGATGAATGTGTGTTAATGTTGCTGGAACATGGCGCTGATGGAATA
 TTCAAGATGAGTATGGAATACCGCTCTACACTATGCTATCTACAATGAAGATAAATTAATGGCCAAAGC
 ACTGCTCTTATATGGTGTGATATTGAATCAAAAAACAAGTGTGGCCTCACACCCTTTTCTTGGCGTA
 CATGAACAAAAACAGCAAGTGGTGAATTTTTAATCAAGAAAAAGCTAATTTAATGCACCTTGATAGAT
 ATGGAAGAAGTCCCTCATACTTGTGTATGTTGTGGATCAGCAAGTATAGTCAATCTTCTACTTGAGCA
 AAATGTTGATGTATCTTCAAGATCTATCTGGACAGACGGCCAGAGAGTATGCTGTTTCTAGTCATCAT
 CATGTAATTTGTGAATTACTTTCTGACTATAAAGAAAAACAGATGCTAAAAATCTCTTCTGAAAAACAGCA
 ATCCAGAAAAAGACTTAAAGTACATCAGAGGAAGAGTACAAAGGCTTAAAGTCAGTAAAAATAGTCA
 GCCAGAGAAAAATGTCTCAAGAACCAGAAAAATAAAGGACTGTGATAGAGAGGTTGAAGAAGAAAAATAAG
 AAGCATGGAAGTAACTCTGTGGATTACCAAAAACTGACTAATGGTGGCAGTGTGGCAATGGTGTGATG
 ATGGATTAATCCACAAAGGAAGAGCAGAAAACTGAAAAACAGCAATTTCTGACACTGAGAATGAAGA
 GTATCACAGTGACGAACAAAATGATACCCAGAAAACTTTCTGAAGAACAGAACTGGAATATCACAA
 GATGAGATTCTGACTAATAAACAAAAGCAGATAGAAGTGGCTGAAAAGGAAATGAATTCTGAGCTTTCTC
 TTAGTCATAAGAAAGAAGAAGATCTCTTGGCTGAAAACAGCATGTTGCGGGAAGAATGGCAAGCTAAG
 ACTGGAAGTATGAAACAAAACATCAGAACAGCTAAGGAAAAATAAATTTTGGAGGAAATTGAAAGT
 GTAAAAGAAAACTTCTAAAGACTATACAACCTGAATGAAGAAGCATTAAACGAAAACAGTATT

ACGCGTACGCGGGCCGCTCGAGCAGAAACTCATCTCAGAAGAGGATCTGGCAGCAAATGATATCCTGGATT
 ACAAGGATGACGACGATAAGGTTTAA

Protein Sequence:

>RC216900 protein sequence
 Red=Cloning site Green=Tags(s)

MVAEVCSPAASAVKKPFDLRSMGKWCHHRFPCCRGSGKSNMGTSGDHDDSFMKTLRSMGKCCCHHCFP
 CCRGSGTSNVGTSGDHNSFMKTLRSMGKWCHCFPCCRGSGKSNVGTWGDYDDSAFMEPRYHVRREDL
 DKLHRAAWWGKVPKDLIVMLRDTDMNKRDKQRTALHLASANGNSEVVQLLLDRRCQLNVLDNKKRTAL
 IKAVQCQEDECVLMLEHGADGNIQDEYGNALHYAIYNEDKLMAKALLLYGADIESKNKCGLTPLLLGV
 HEQKQVVKFLIKKANLNALDRYGRALILAVCCGSASIVNLLLEQNVDVSSQDL SGQTAREYAVSSH
 HVICELLSDYKEKQMLKISSSENSPEQDLKLTSEESQRLKVSSENSQPEKMSQPEPEINKDCDREVEEIK
 KHGSNPVGLPENLTNGASAGNGDDGLIPQRKSRKPNQFPDTENEEYHSDEQNDTQKQLSEEQNTGISQ
 DEILTNNKQKQIEVAEKEMNSELSLHKKEEDLLRENSMLREEIAKLRLELDETKHQNLRENKILEEIES
 VKEKLLKTIQLNEEALTKTSI

TRTRPLEQKLISEEDLAANDILDYKDDDDKV

Chromatograms:

https://cdn.origene.com/chromatograms/mk6670_a04.zip

Restriction Sites:

Sgfl-Mlul

Cloning Scheme:


ACCN: NM_207355

ORF Size: 1743 bp

OTI Disclaimer: The molecular sequence of this clone aligns with the gene accession number as a point of reference only. However, individual transcript sequences of the same gene can differ through naturally occurring variations (e.g. polymorphisms), each with its own valid existence. This clone is substantially in agreement with the reference, but a complete review of all prevailing variants is recommended prior to use. [More info](#)

OTI Annotation: This clone was engineered to express the complete ORF with an expression tag. Expression varies depending on the nature of the gene.

Components: The ORF clone is ion-exchange column purified and shipped in a 2D barcoded Matrix tube containing 10ug of transfection-ready, dried plasmid DNA (reconstitute with 100 ul of water).

- Reconstitution Method:**
1. Centrifuge at 5,000xg for 5min.
 2. Carefully open the tube and add 100ul of sterile water to dissolve the DNA.
 3. Close the tube and incubate for 10 minutes at room temperature.
 4. Briefly vortex the tube and then do a quick spin (less than 5000xg) to concentrate the liquid at the bottom.
 5. Store the suspended plasmid at -20°C. The DNA is stable for at least one year from date of shipping when stored at -20°C.

RefSeq: [NM_207355.5](#)

RefSeq Size: 2136 bp

RefSeq ORF: 1746 bp

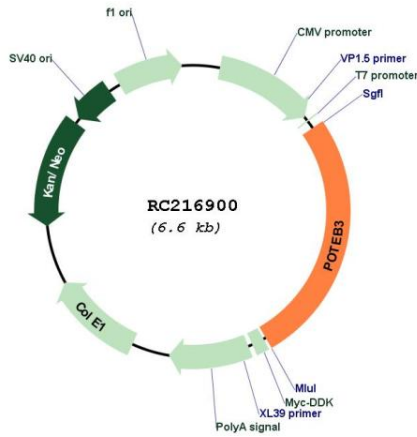
Locus ID: 102724631

UniProt ID: [Q6S5H4](#)

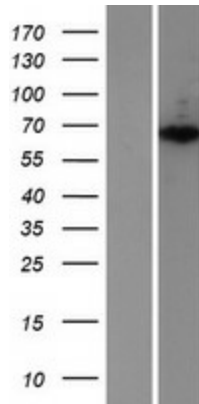
Cytogenetics: 15q11.2

MW: 65.7 kDa

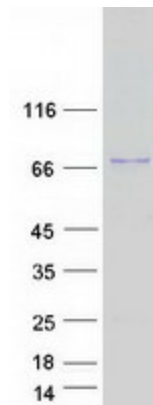
Product images:



Circular map for RC216900



Western blot validation of overexpression lysate (Cat# [LY403978]) using anti-DDK antibody (Cat# [TA50011-100]). Left: Cell lysates from untransfected HEK293T cells; Right: Cell lysates from HEK293T cells transfected with RC216900 using transfection reagent MegaTran 2.0 (Cat# [TT210002]).



Coomassie blue staining of purified POTEB3 protein (Cat# [TP316900]). The protein was produced from HEK293T cells transfected with POTEB3 cDNA clone (Cat# RC216900) using MegaTran 2.0 (Cat# [TT210002]).