

Product datasheet for **RC216898**

IGFBP3 (NM_001013398) Human Tagged ORF Clone

Product data:

Product Type: Expression Plasmids
Product Name: IGFBP3 (NM_001013398) Human Tagged ORF Clone
Tag: Myc-DDK
Symbol: IGFBP3
Synonyms: BP-53; IBP3
Mammalian Cell Selection: Neomycin
Vector: pCMV6-Entry (PS100001)
E. coli Selection: Kanamycin (25 ug/mL)
ORF Nucleotide Sequence: >RC216898 representing NM_001013398
 Red=Cloning site Blue=ORF Green=Tags(s)

TTTTGTAATACGACTCACTATAGGGCGGCCGGAATTCGTCGACTGGATCCGGTACCGAGGAGATCTGCC
 GCC**CGATCGCC**

ATGCAGCGGGCGCAGCCACGCTCTGGGCCGCTGCGCTGACTCTGCTGGTGTGCTCCGCGGGCCGCCGG
 TGGCGGGGCTGGCGGAGCTCGGGGGCTTGGTCCCCTGGTGCCTGCGAGCCGTGCGACGCGGTGC
 ACTGGCCAGTGCAGCCTCCGCCCGCTGTGCGCGGAGCTGGTGCAGCAGCCGGCTGCGGCTGCTGC
 CTGACGTGCGCACTGAGCGAGGGCCAGCCGTGCGGCATCTACACCGAGCGCTGTGGCTCCGGCTTCGCT
 GCCAGCCGTGCGCGACGAGGCGCGACCCGCTGCAGGCGCTGCTGGACGGCCGCGGCTCTGCGTCAACGC
 TAGTGCCGTGAGCCGCTGCGCGCTACCTGCTGCCAGCGCCGAGCTCCAGGTGAGCCCGCCGCCA
 GGAAATGCTAGTGAAGGAGGAAGACCGAGCGCGGAGTGTGGAGAGCCCGTCCGTCTCCAGCACGC
 ACCGGGTGTGATCCCAAGTCCACCCCTCCATTCAAAGATAATCATCATCAAGAAAGGGCATGCTAA
 AGACAGCCAGCGCTACAAAGTTGACTACGAGTCTCAGAGCACAGATACCCAGAATCTCCTCCGAGTCC
 AAGCGGGAGACAGAATATGGTCCCTGCCGTAGAGAAATGGAAGACACACTGAATCACCTGAAGTTCTCA
 ATGTGCTGAGTCCAGGGGTGTACACATTCCCAACTGTGACAAGAAGGGATTTTATAAGAAAAAGCAGTG
 TCGCCCTTCCAAGGCAGGAAGCGGGCTTCTGCTGGTGTGGATAAGTATGGGCAGCCTCTCCAGGC
 TACACCACCAAGGGAAGGAGGACGTGCACTGTACAGCATGCAGAGCAAG

ACGCGTACGCGGGCGCTCGAGCAGAAACTCATCTCAGAAGAGGATCTGGCAGCAAATGATATCCTGGATT
 ACAAGGATGACGACGATAAGGTTTAA



[View online »](#)

Protein Sequence: >RC216898 representing NM_001013398
Red=Cloning site Green=Tags(s)

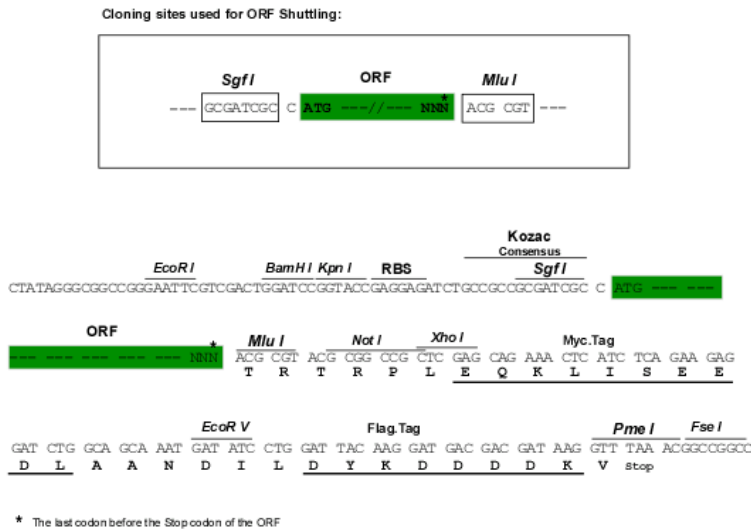
MQRARPTLWAAAL TLLVLLRGPPVARAGASSGGLGPVVRCEPCDARALAQCAPPAVCAELVREPGCGCC
 LTCALSEGQPCGIYTERCGSLRCQSPDEARPLQALLDGRGLCVNASAVSRLRAYLLPAPPAPGEPAP
 GNASEEEDRSAGSVESPSVSSTHRVS DPKFHPLHSKI I I IKKGHAKDSQRYKVDYESQSTDTQNFSSS
 KRETEYGPCRRMEDTLNHLKFLNVLSPRGVHIPNCDKKGFYKKKQCRPSKGRKRGF CWCVDKYGQPLPG
 YTTKGKEDVHCYSMQSK

TRTRPLEQKLISEEDLAANDILDYKDDDDKV

Chromatograms: https://cdn.origene.com/chromatograms/mk6100_a05.zip

Restriction Sites: SgfI-MluI

Cloning Scheme:



ACCN: NM_001013398

ORF Size: 891 bp

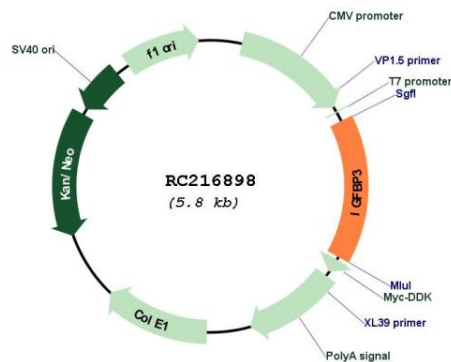
OTI Disclaimer: The molecular sequence of this clone aligns with the gene accession number as a point of reference only. However, individual transcript sequences of the same gene can differ through naturally occurring variations (e.g. polymorphisms), each with its own valid existence. This clone is substantially in agreement with the reference, but a complete review of all prevailing variants is recommended prior to use. [More info](#)

OTI Annotation: This clone was engineered to express the complete ORF with an expression tag. Expression varies depending on the nature of the gene.

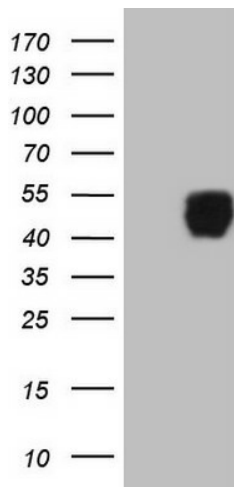
Components: The ORF clone is ion-exchange column purified and shipped in a 2D barcoded Matrix tube containing 10ug of transfection-ready, dried plasmid DNA (reconstitute with 100 ul of water).

- Reconstitution Method:**
1. Centrifuge at 5,000xg for 5min.
 2. Carefully open the tube and add 100ul of sterile water to dissolve the DNA.
 3. Close the tube and incubate for 10 minutes at room temperature.
 4. Briefly vortex the tube and then do a quick spin (less than 5000xg) to concentrate the liquid at the bottom.
 5. Store the suspended plasmid at -20°C. The DNA is stable for at least one year from date of shipping when stored at -20°C.
- RefSeq:** [NM_001013398.1](#), [NP_001013416.1](#)
- RefSeq Size:** 2638 bp
- RefSeq ORF:** 894 bp
- Locus ID:** 3486
- UniProt ID:** [P17936](#)
- Cytogenetics:** 7p12.3
- Protein Families:** Druggable Genome, Secreted Protein
- Protein Pathways:** p53 signaling pathway
- MW:** 32.21 kDa
- Gene Summary:** This gene is a member of the insulin-like growth factor binding protein (IGFBP) family and encodes a protein with an IGFBP domain and a thyroglobulin type-I domain. The protein forms a ternary complex with insulin-like growth factor acid-labile subunit (IGFALS) and either insulin-like growth factor (IGF) I or II. In this form, it circulates in the plasma, prolonging the half-life of IGFs and altering their interaction with cell surface receptors. Alternate transcriptional splice variants, encoding different isoforms, have been characterized. [provided by RefSeq, Jul 2008]

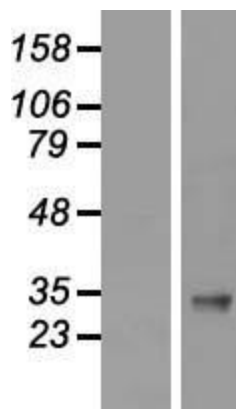
Product images:



Circular map for RC216898



HEK293T cells were transfected with the pCMV6-ENTRY control (Cat# [PS100001], Left lane) or pCMV6-ENTRY IGFBP3 (Cat# RC216898, Right lane) cDNA for 48 hrs and lysed. Equivalent amounts of cell lysates (5 ug per lane) were separated by SDS-PAGE and immunoblotted with anti-IGFBP3(Cat# [TA807469]). Positive lysates [LY422966] (100ug) and [LC422966] (20ug) can be purchased separately from OriGene.



Western blot validation of overexpression lysate (Cat# [LY422966]) using anti-DDK antibody (Cat# [TA50011-100]). Left: Cell lysates from untransfected HEK293T cells; Right: Cell lysates from HEK293T cells transfected with RC216898 using transfection reagent MegaTran 2.0 (Cat# [TT210002]).