

Product datasheet for RC216895

PHETA2 (NM_001002034) Human Tagged ORF Clone

Product data:

Product Type:	Expression Plasmids
Product Name:	PHETA2 (NM_001002034) Human Tagged ORF Clone
Tag:	Myc-DDK
Symbol:	PHETA2
Synonyms:	FAM109B; IPIP27B; Ses2
Mammalian Cell Selection:	Neomycin
Vector:	pCMV6-Entry (PS100001)
E. coli Selection:	Kanamycin (25 ug/mL)
ORF Nucleotide Sequence:	>RC216895 representing NM_001002034 Red=Cloning site Blue=ORF Green=Tags(s)

TTTTGTAATACGACTCACTATAGGGCGCCGGGAATTCGTCGACTGGATCCGGTACCGAGGAGATCTGCC
GCC**CGATCGCC**

ATGAAGCTGAACGAGAGGAGTGTAGCCACTATGCACTCAGCGACTCCCCAGCGGACCACATGGGCTTCC
TGCGCACCTGGGGGGCCAGGGACCCACCGACCCCACTGGCACTGGCCGAAGATGCTGGTTTGTCT
CAAGGGCAACCTGCTATTCTCTTTGAGAGTCGCGAGGGCCGGCCCACTGAGCCTGGTGGTGTGGAA
GGCTGCACAGTGGAACTGGCCGAGGCTCCCGTGCCGAGGAGTTGCCTTTGCCATCTGCTTTGATGCC
CTGGAGTGCGCCACACCTGCTGGCCGAGAAGGGCCGGCCAGGAGCCTGGTGAAGGTGCTGTC
CCGGGCAAGCTTTGGCTACATGCGCCTGGTGGTACGCGAGTTGGAGAGCCAGTTGCAAGGACGACCCAG
AGCCTGGCTTTGCAACGCCGCTCATCTGGAAGTCTGTTGCCAGCCGCTGTAAGCCCAAGCTCCTAACC
ACCGAGCTGCGGGCCTGGAGAATGGCCACTGCCTCTCAAGGACAGCAGCCCTGTGGGCTTGGTTGAAGA
AGCGGGCAGCAGGTCTGCAGGTGGGGTTGGCTGAGTGGGAGCTGCAGGGCCCTGCCAGCTCCTCCTA
GGCAAGGGGACAGCCCTGTGTCCCTGAGACCTCTGCTTCTCTACCCTGCATGACTGGTATGGCCAGG
AGATCGTGGAGCTGCGGCAGTGTGGCAGAAGAGGGCCAGGGGAGCCACTCAAATGTGAGGAACAGGA
TAGGCC

ACGCGTACGCGGCCGCTCGAGCAGAACTCATCTCAGAAGAGGATCTGGCAGCAAATGATATCCTGGATT
ACAAGGATGACGACGATAAGGTTTAA



[View online »](#)

Protein Sequence: >RC216895 representing NM_001002034
 Red=Cloning site Green=Tags(s)

MKLNERSVAHYALSDSPADHMGFLRTWGGPGTPPTPSGTGRRWFVFKGNLLFSFESREGRAPLSLVVLE
 GCTVELAEAPVPEEFAFAICFDAPGVRPHLLAAEGPAAQEAWVKVLSRASFGYMRLVVRELESQIQDARQ
 SLALQRRSSWKSVASRCKPQAPNHRAAGLENGHCLSKDSSPVGLVEEAGSRASAGWGLAEWELQGPASLLL
 GKQGSPVSPETSFCSTLHDWYQGEIVELRQCWQKRAQGSKCEEQDRP

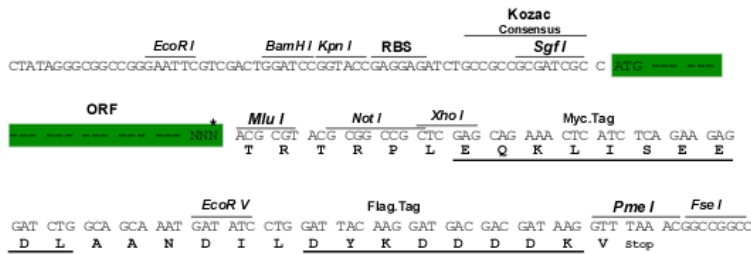
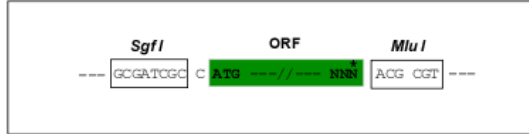
TRTRPLEQKLISEEDLAANDILDYKDDDDKV

Chromatograms: https://cdn.origene.com/chromatograms/mk8018_g01.zip

Restriction Sites: SgfI-MluI

Cloning Scheme:

Cloning sites used for ORF Shuttling:



* The last codon before the Stop codon of the ORF

ACCN: NM_001002034

ORF Size: 777 bp

OTI Disclaimer: The molecular sequence of this clone aligns with the gene accession number as a point of reference only. However, individual transcript sequences of the same gene can differ through naturally occurring variations (e.g. polymorphisms), each with its own valid existence. This clone is substantially in agreement with the reference, but a complete review of all prevailing variants is recommended prior to use. [More info](#)

OTI Annotation: This clone was engineered to express the complete ORF with an expression tag. Expression varies depending on the nature of the gene.

Components: The ORF clone is ion-exchange column purified and shipped in a 2D barcoded Matrix tube containing 10ug of transfection-ready, dried plasmid DNA (reconstitute with 100 ul of water).

Reconstitution Method:

1. Centrifuge at 5,000xg for 5min.
2. Carefully open the tube and add 100ul of sterile water to dissolve the DNA.
3. Close the tube and incubate for 10 minutes at room temperature.
4. Briefly vortex the tube and then do a quick spin (less than 5000xg) to concentrate the liquid at the bottom.
5. Store the suspended plasmid at -20°C. The DNA is stable for at least one year from date of shipping when stored at -20°C.

RefSeq: [NM_001002034.3](#)

RefSeq Size: 2396 bp

RefSeq ORF: 780 bp

Locus ID: 150368

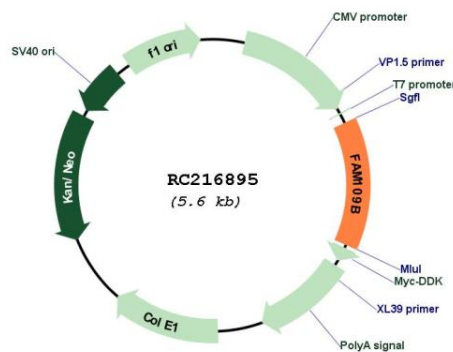
UniProt ID: [Q6ICB4](#)

Cytogenetics: 22q13.2

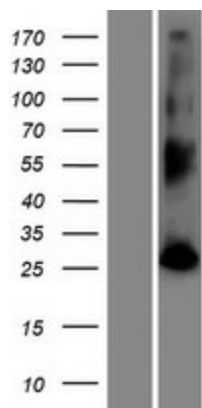
MW: 28.2 kDa

Gene Summary: Plays a role in endocytic trafficking. Required for receptor recycling from endosomes, both to the trans-Golgi network and the plasma membrane.[UniProtKB/Swiss-Prot Function]

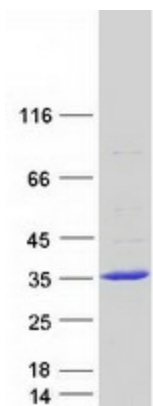
Product images:



Circular map for RC216895



Western blot validation of overexpression lysate (Cat# [LY424173]) using anti-DDK antibody (Cat# [TA50011-100]). Left: Cell lysates from untransfected HEK293T cells; Right: Cell lysates from HEK293T cells transfected with RC216895 using transfection reagent MegaTran 2.0 (Cat# [TT210002]).



Coomassie blue staining of purified PHETA2 protein (Cat# [TP316895]). The protein was produced from HEK293T cells transfected with PHETA2 cDNA clone (Cat# RC216895) using MegaTran 2.0 (Cat# [TT210002]).