

Product datasheet for **RC216894**

ARMCX2 (NM_177949) Human Tagged ORF Clone

Product data:

Product Type:	Expression Plasmids
Product Name:	ARMCX2 (NM_177949) Human Tagged ORF Clone
Tag:	Myc-DDK
Symbol:	ARMCX2
Synonyms:	ALEX2; GASP9
Mammalian Cell Selection:	Neomycin
Vector:	pCMV6-Entry (PS100001)
E. coli Selection:	Kanamycin (25 ug/mL)



[View online »](#)

ORF Nucleotide
Sequence:

>RC216894 ORF sequence

Red=Cloning site Blue=ORF Green=Tags(s)

TTTTGTAATACGACTCACTATAGGGCGGCCGGGAATTCGTCGACTGGATCCGGTACCGAGGAGATCTGCC
GCCGCGATCGCCATGAGCCGCGTTCGGGATGCTGGCTGTGTAGCGCGGGGATAGTGATAGGGGCTGGTGCCTGGTACTGTG
TCTACAAATACACCAGGGGAGAGACCAGACCAAGAAGAGAATGGCCAAGCCAAAAACCGGCTGTGGC
TGGGACTGGAGCCAGGGCTAGAGCTGGGCTAAGAGCCGGATTACAATCGACCTTGGGTCAGGATTCAGT
CCCCAACCCAGTCCGTGCTGAAGCAGAGGACAGGGCCAGGATGAAGCCTCTGCTCTGGACACAGTTG
GAGCTGAGGCAGTGGCCCAGCTGCATCCAGCGCTGAGGCTCAGAGTGGGCGAGGAGTCAAGCCAAAGA
GGCAGATGGAGCCGGGTTGGGCCTAAGGCCGAATCAGTAGTTGGGGCTGCAATGGCTTCTGCAATAGCA
CCACCTCCCGGGTGACAGAGGCCCTTGGGGCTGCAGAAGCCCTGCAATGGCAGGGGCTCCCAAAGTGG
CAGAAGCTCCAGAGAAGCGGAGACTTCCAGGGCAGCGGTGCCTCTGGGACAGTGGTGCCTACCGAAGC
GGCAGCACCCACTGAGGTGACCGAGGGTCTGGGGTAGCAGCACCTACCAAGGTAGCTGAAGCTCCCGGG
GTGGCATCGCCTACCGAGGCAGCTGAGGCTCCTGTGCCCGCAACGCCCTACTGGGGCTGCAGCACCTACTG
GGGCTGCAGAGTCTCCTGGAACCTCTGGTTCGCCCTAGAACAGCGGTGGTTCCTGGAACATCAGTGCCAA
GAAAGCAACCCCTGGGGCTCACACTGGGGCTATACCGAAAACCCATCAGCGACTGGAGCGGTACCCAAA
GGTGGAGGCAAGGGTGTAAACAGTCCCGGAATGGGGCAAGGGCAAGGGCAAGAAAAGCAAAGTTGAAG
TAGACGAACTGGGGATGGGCTTCCGTCTGGAGATGGGGCTGCAGCAGCTGCTGCAGCCTCTGCTAATGG
CGGACAGGCTTTCCTGGCAGAGGTCCCTGATTCTGAGGAAGGGGAGTCCGGGTGGACTGACACAGAGTCA
GATTCAGACTCTGAGCCCGAGACCCAGCGCAGAGGGAGGGGAAGAAGACCCGTTGCCATGCAGAAGCGCC
CCTTTCCTTATGAAATTGATGAGATTCTGGGTGTCGCGATCTCAGGAAGGTCTTGCCTTGCTTCAGAA
ATCTGATGATCCTTTCATCCAACAGGTAGCTTTGCTCACTCTGAGCAACAATGCCAATTATTCATGCAAT
CAAGAGACAATCCGCAAATTGGGAGGCCTCCCAATTATTGCAAACATGATCAACAAAACCTGATCCACACA
TTAAGGAAAAAGCCTTAATGGCCATGAATAACCTGAGTGAGAATTATGAAAATCAGGGCCGGCTTCAGGT
GTACATGAATAAAGTGTGGATGATATCATGGCCTCTAACCTGAACTCAGCAGTTCAGTGTGGACTA
AAATTTCTAACAAACATGACTATTACTAATGACTACCAACACCTGCTTGCAATTCATTGCAAACCTTTT
TCCGTTTGCTATCTCAGGGAGGTGGAAAAATCAAGGTTGAGATTTTGAATCCTTTGCAATTTTGCTGA
AAATCCAGATATGTTGAAGAACTTCTCAGTACCCAAGTCCAGCATCATTTAGTTCCTCTATAATTCT
TACGTGGAATCAGAAATCCTTATTAATGCCCTTACTCTATTTGAGATTATCTATGACAATCTCAGAGCAG
AAGTGTTTAACTATAGAGAATCAATAAAGGTTCCCTTTTTTACTTATGCACTACATCTGGAGTGTGTGT
TAAGAAAATTAGAGCCTTAGCAAATCACCATGACCTCTTAGTGAAGTGAAGTTATAAACTAGTGAAC
AAATTCACGCGTACGCGGCCGCTCGAGCAGAACTCATCTCAGAAGAGGATCTGGCAGCAAATGATATCCTGGATT
ACAAGGATGACGACGATAAGGTTAA

Protein Sequence: >RC216894 protein sequence
Red=Cloning site Green=Tags(s)

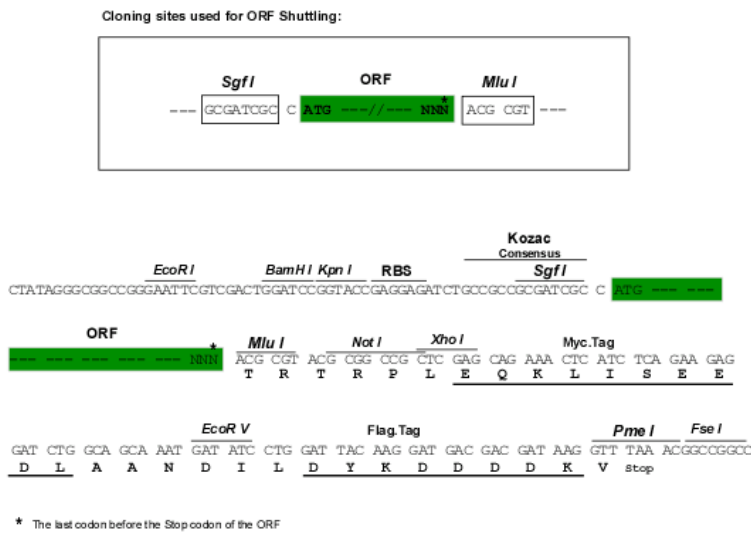
MSRVRDAGCVAAGIVIGAGAWYCVYKYTRGRDQTKKRMKPKNRAVAGTGARARAGLRAGFTIDLGGSGF
 PPTPVRAEADRAQDEASALDTVGAEAVAPAASSAEAQSGAGSQAEADGAGVGPKAESVVGAAAMASIA
 PPPGVTEALGAAEAPAMAGAPKVAEAPREAETSRAAVPPGTVVPTEAAAPTEVTEGPGVAAPTKVAEAPG
 VASPTAAEAPVPATPTGAAAPTGAESPSTSGSPRTAVVPGTSAKKATPGAHTGAIPKATSATGAVPK
 GGGKGVTRSRNGKGGKGGKSKVEVDELGMGFRPGDGAAAAAASANGGQAFLEVPDSEEGESGWTDTES
 DSDSEPETQRRGRRRPVAMQKRPFYIDEILGVRDLRKLALLQKSDDPFIQVQVALLTSLNNANYSCN
 QETIRKLGGLPIIANMINKDPHIKEKALMAMNNLSENYENQGRQLQVYMNKVMDDIMASNLNSAVQVGL
 KFLTNMTITNDYQHLLVNSIANFFRLLSQGGGKIKVEILKILSNFAENPDMLKLLSTQVPASFSSLVNS
 YVESEILINALTLFEIYDNLRAEVFNREFNKGSFYLCCTSGVCVKKIRALANHHDLVKVKVIKLVN
 KF

TRTRPLEQKLISEEDLAANDILDYKDDDDKV

Chromatograms: https://cdn.origene.com/chromatograms/mk6674_h12.zip

Restriction Sites: SgfI-MluI

Cloning Scheme:



ACCN: NM_177949

ORF Size: 1896 bp

OTI Disclaimer: The molecular sequence of this clone aligns with the gene accession number as a point of reference only. However, individual transcript sequences of the same gene can differ through naturally occurring variations (e.g. polymorphisms), each with its own valid existence. This clone is substantially in agreement with the reference, but a complete review of all prevailing variants is recommended prior to use. [More info](#)

OTI Annotation: This clone was engineered to express the complete ORF with an expression tag. Expression varies depending on the nature of the gene.

Components: The ORF clone is ion-exchange column purified and shipped in a 2D barcoded Matrix tube containing 10ug of transfection-ready, dried plasmid DNA (reconstitute with 100 ul of water).

Reconstitution Method:

1. Centrifuge at 5,000xg for 5min.
2. Carefully open the tube and add 100ul of sterile water to dissolve the DNA.
3. Close the tube and incubate for 10 minutes at room temperature.
4. Briefly vortex the tube and then do a quick spin (less than 5000xg) to concentrate the liquid at the bottom.
5. Store the suspended plasmid at -20°C. The DNA is stable for at least one year from date of shipping when stored at -20°C.

RefSeq: [NM_177949.4](#)

RefSeq Size: 2904 bp

RefSeq ORF: 1899 bp

Locus ID: 9823

UniProt ID: [Q7L311](#)

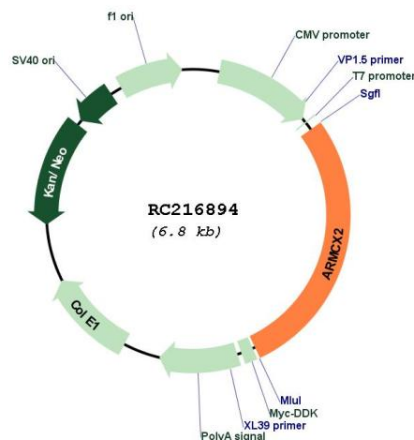
Cytogenetics: Xq22.1

Protein Families: Transmembrane

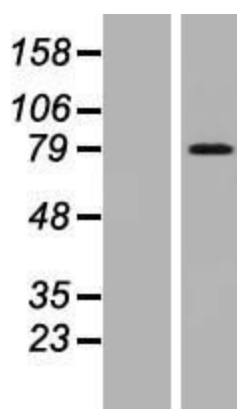
MW: 65.7 kDa

Gene Summary: This gene encodes a protein containing a potential N-terminal transmembrane domain and multiple armadillo (arm) repeats. Proteins containing arm repeats are involved in development, maintenance of tissue integrity, and tumorigenesis. This gene is located in a cluster of related genes on chromosome X. There is a pseudogene for this gene on chromosome 7. Alternative splicing in the 5' UTR results in multiple transcript variants encoding the same protein. [provided by RefSeq, Aug 2013]

Product images:



Circular map for RC216894



Western blot validation of overexpression lysate (Cat# [LY406055]) using anti-DDK antibody (Cat# [TA50011-100]). Left: Cell lysates from untransfected HEK293T cells; Right: Cell lysates from HEK293T cells transfected with RC216894 using transfection reagent MegaTran 2.0 (Cat# [TT210002]).