

Product datasheet for **RC216891**

ZBTB10 (NM_023929) Human Tagged ORF Clone

Product data:

Product Type:	Expression Plasmids
Product Name:	ZBTB10 (NM_023929) Human Tagged ORF Clone
Tag:	Myc-DDK
Symbol:	ZBTB10
Synonyms:	RINZF
Mammalian Cell Selection:	Neomycin
Vector:	pCMV6-Entry (PS100001)
E. coli Selection:	Kanamycin (25 ug/mL)



[View online »](#)

ORF Nucleotide
Sequence:

>RC216891 representing NM_023929
Red=Cloning site Blue=ORF Green=Tags(s)

TTTTGTAATACGACTCACTATAGGGCGGCCGGGAATTCGTCGACTGGATCCGGTACCGAGGAGATCTGCC
GCC**CGGATCGCC**

ATGTCGTTTCAGTGAATGAACCGCAGGACGCTGGCGTTCAGAGGAGCGGTTGGTCACCCTAGCGGCC
GCGGCTCCACGAACAATAACGCTGGCGGGAGGCTCAGCTTGGCTCCGAGCCCCAGCCGAGACAGCC
CCCCGCCAGCGCCGCCCGCGCTTCCAGCCGCTAATGGCGGGGGCCGACGAGGAAGTGAATTGGAG
GGCCTGGAGCCCCAAGACCTGGAGGCTCCGCCGGGCCGGCCGCCGGCGCCGAGGAAGCAAGGAGT
TGCTGCTCCCCAAGACGCGGGCGCCACCTCGCTTGGCGGTGGCGGGGGGCCCTGCTAGCGGA
AAGGAACCGTCGGACTCTGGCTTCCGAGGCGGCGGGCGGGGGTCTCGGAACAATGGCAGTAGCCGC
GGCCGCCCGAGACCTCGGTGTGGCCCTTGGGCAATTTCAATGGGCGAGGGCCGGCGACTGTGGATCTGG
AGCTGGACGCGCTGGAGGGGAAGGAGTTGATGCAGGACGGCGCTCCCTGAGCGACAGCACCGAGGACGA
GGAGGAGGGGGCAGCCTGGGCGACGGCAGCGGGCGGAAGGCGGCAGCTGCAGCAGCAGCAGGCGGTGC
GGCGGGGATGGCGGGGACGAAGTGGAGGCGAGCGGTGTGGGAGCTGGCGAAGGAGAGACTGTCCAGCACT
TCCCGCTCGCGGGCCCAAGTCTCTAATGCAGAAGCTCCAATGCTCCTCCAGACCTCCTGGCTCAAGGA
CTTTCCCTGGCTGCGCTATTCCAAGGATACTGGTCTTATGTCTTGGCGGTGGTGC AAAAAGACCCCTGCA
GATGGGGGAAGCGTGGACCTTCCCCAGTGGGGCATGATGAGCTTTCGCGAGGGACCCGCAACTACAAGA
AAACCCCTCCTCTGAGGCACCACGTCTCTACCGAGCACAACTCCACGAAGCCACGCCCAGGAGTCAGA
AATACCATCAGAGGAGGGTACTGTGACTTTAATAGTAGGCCAAATGAGAATCTTATTGCTATCAACTT
CTGCGACAACATAAAGACATCTGGTTCAGGCGAGCGTTCCTTTAAGACTTATATTGCTTTTCAAA
CAAAGAAAGCCCTAACCAAAAACAATACTACCCACTTAGATATTGCTGCAGTTCAAGGTTTTTCAGTCATC
TTGGACTTCTTGTATTCTGGTAACCTGGTGCTCACAAGCCAAAATGCCATTGAAGTTATGACCGTGGCCA
GCTATCTTCAAATGAGTGAAGTTGTTCAAACCTGCCGAAATTTCAATAAAGATGCCTTAAATATAAGCAT
TAAATCAGAAGCTCCAGAGTCTGTAGTTGTGGACTATAATAATAGAAAACCAAGTAAATAGAGATGGTCTG
TCTTCATCAGGGATCAAAAAATGCCAGTTTTGGGCAACACGGAATCTTACCAATTTGGCAAGTAATG
TAAAGATTGAAAATGATGGTTGTAATGTCGACGAGGGCCAAATAGAAAACCTACCAATGAATGACAGTAG
TTGGGTCCAGGATGGATCTCCTGAAATGGCTGAAAATGAATCTGAAGGTCAAACAAAAGTGTATTATTGG
AATAATATGGGCTCCCAGGGAATCAAGAGACTGGCAAAACAAGGAGGAAAAACCAAACTACAAAAGAT
TTATTTATAATATTCCACCTAATAATGAAACGAATTTAGAAGATTGCTCAGTAATGCAGCCACCTGTTGC
CTATCCAGAAGAAAATACACTACTCATCAAGGAAGAACCAGATTTAGATGGTGCTCTACTCTCGGGGCCA
GATGGTGATAGGAATGTGAATGCAAAATTTATTGGCTGAAGCTGGCACTAGTCAAGATGGAGGTGATGCTG
GTACTTCACATGATTTCAAGTATGGTTTGATGCCTGGTCTTCAAATGATTTCAAGTATGGATTATTGCC
AGAATCTTGGCCAAAACAAGAACTGGGAAAATGGTGAATCATCTCTAATCATGAACAAGTTAAATGC
CCTCATTGTAGCTATGTAGCCAAATACAGACGAACTAAAAAGGCATTGCTCATTACACAGGAGTGA
GATCATTTAGCTGTGATATTTGGGAAAATGTTACTCGAAGAGAACATGTAAGGACATTCCCTGGT
GCATAAAAAGGATAAAAAATACAAATGTATGGTGTGTAAGAAGATCTTCATGTTAGCAGCCAGTGTGGA
ATAAGACATGGATCTCGACGTTATGGTGTGTTGTAGACTGTGCAGATAAATCACAGCCAGGAGGCAAG
AAGGTGTAGATCAGGGACAGGATACAGAATCCCTCGGGATGAAGAATACGAGGAGAATGAAGTAGGAGA
AGCTGATGAAGAGCTAGTTGATGATGGAGAAGATCAGAATGATCCCTCTCGATGGGATGAATCAGGAGAA
GTTTGTATGTCTAGATGAT

AG**CGGACCG**ACGCGTACGCGGCCGCTCGAGCAGAACTCATCTCAGAAGAGGATCTGGCAGCAAATGATATCC
TGGATTACAAGGATGACGACGATAAGGTTTAA

Protein Sequence: >RC216891 representing NM_023929
 Red=Cloning site Green=Tags(s)

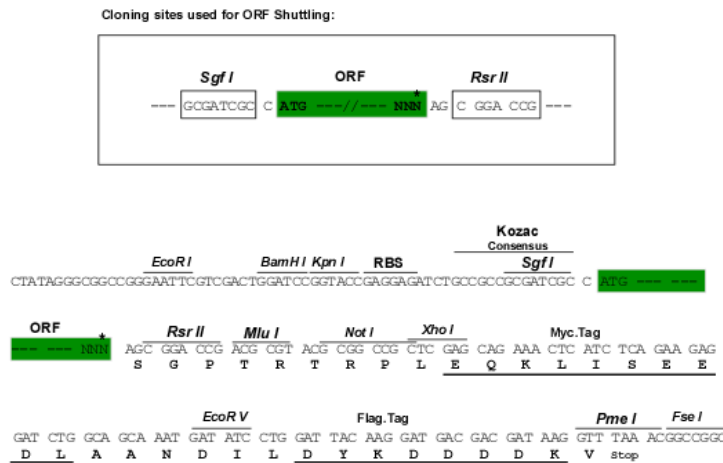
MSFSEMNRRTLAFRGGGLVTASGGGSTNNAGGEASAWPPQPQPRQPPPPAPPALQPPNNGRADEEVELE
 GLEPQDLEASAGPAAGAAEEAKELLLPQDAGGPTSLGGGAGGPLLAERNRRTLAFRGGGGGGLGNNGSSR
 GRPETSVMPLRHFNGRGPATVDLELDALEGEKELMQDGASLSDSTEDEEEGASLDGSGAEGGSCSSRRS
 GGDGGDEVEGSGVGEGETVQHFPLARPKSLMQKLQCSFQTSWLKDFPWLRYSKDTGLMSCGCWQKTPA
 DGGSDVLPVGHDEL SRGTRNYKKTLLLRHHVSTEHKLHEANAQSEIIPSEEGYCDFNSRPNENSICYQL
 LRQLNEQRKKGILCDVSI VVSGKIFKAHKNIL VAGSRFFKTL YCF SNKE SPNQNTTHLDIAAVQGFSVI
 LDFLYSGNLVLT SQNAIEVMTVASYLQ MSEVVQTCRNF IKDALNISI KSEAPESVVVDYNNRKPVNRDGL
 SSSRDQKIASFWATRNL TNLASNVKIENDGCNVDEGQIENYQMNDSWVQDGSPEMAENESEGTQKVIW
 NNMGSQGIQETGKTRRNQTTKRFIYNIPPNNETNLEDCSVMQPPVAYPEENTLLIKEEPLDGLALLSGP
 DGDRNVANLLAEAGTSQDGDAGTSHDFKYGLMPGASNDFKYGLLPESWPKQETWENGESSLIMNKLK
 PHCSYVAKYRRTLKRHLLIHTGVRFSDCICGKLFTRREHVKRHSLVHKKDKKYKCMVCKKIFMLAASVG
 IRHGSRRYGVCVDCADK SQPGGQEGVDQGDTEFPRDEEYEENEVGEADEELVDDGEDQNDPSRWDES
 GECVMSLDD

SGPTRRRLEQKLI SEEDLAANDILDYKDDDDKV

Restriction Sites:

SgfI-RsrII

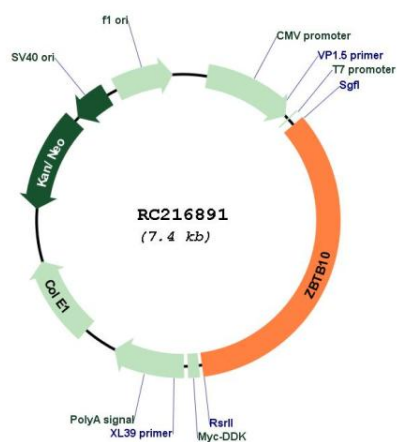
Cloning Scheme:



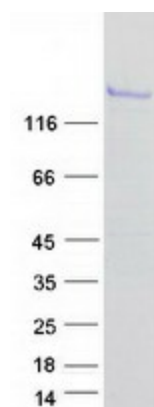
* The last codon before the Stop codon of the ORF

ACCN:	NM_023929
ORF Size:	2541 bp
OTI Disclaimer:	The molecular sequence of this clone aligns with the gene accession number as a point of reference only. However, individual transcript sequences of the same gene can differ through naturally occurring variations (e.g. polymorphisms), each with its own valid existence. This clone is substantially in agreement with the reference, but a complete review of all prevailing variants is recommended prior to use. More info
OTI Annotation:	This clone was engineered to express the complete ORF with an expression tag. Expression varies depending on the nature of the gene.
Components:	The ORF clone is ion-exchange column purified and shipped in a 2D barcoded Matrix tube containing 10ug of transfection-ready, dried plasmid DNA (reconstitute with 100 ul of water).
Reconstitution Method:	<ol style="list-style-type: none">1. Centrifuge at 5,000xg for 5min.2. Carefully open the tube and add 100ul of sterile water to dissolve the DNA.3. Close the tube and incubate for 10 minutes at room temperature.4. Briefly vortex the tube and then do a quick spin (less than 5000xg) to concentrate the liquid at the bottom.5. Store the suspended plasmid at -20°C. The DNA is stable for at least one year from date of shipping when stored at -20°C.
RefSeq:	NM_023929.4
RefSeq Size:	4146 bp
RefSeq ORF:	2544 bp
Locus ID:	65986
UniProt ID:	Q96DT7
Cytogenetics:	8q21.13
Domains:	BTB, zf-C2H2
Protein Families:	Transcription Factors
MW:	92.1 kDa
Gene Summary:	May be involved in transcriptional regulation.[UniProtKB/Swiss-Prot Function]

Product images:



Circular map for RC216891



Coomassie blue staining of purified ZBTB10 protein (Cat# [TP316891]). The protein was produced from HEK293T cells transfected with ZBTB10 cDNA clone (Cat# RC216891) using MegaTran 2.0 (Cat# [TT210002]).