

## Product datasheet for **RC216888**

### TRPM4 (NM\_017636) Human Tagged ORF Clone

#### Product data:

**Product Type:** Expression Plasmids  
**Product Name:** TRPM4 (NM\_017636) Human Tagged ORF Clone  
**Tag:** Myc-DDK  
**Symbol:** TRPM4  
**Synonyms:** EKVP6; hTRPM4; LTrpC4; PFHB1B; TRPM4B  
**Mammalian Cell Selection:** Neomycin  
**Vector:** pCMV6-Entry (PS100001)  
**E. coli Selection:** Kanamycin (25 ug/mL)  
**ORF Nucleotide Sequence:** >RC216888 representing NM\_017636  
Red=Cloning site Blue=ORF Green=Tags(s)

TTTTGTAATACGACTCACTATAGGGCGGCCGGAATTCGTCGACTGGATCCGGTACCGAGGAGATCTGCC  
GCC**CGATCGCC**

ATGGTGGTGCCGGAGAAGGAGCAGAGCTGGATCCCAAGATCTTCAAGAAGAAGACCTGCACGACGTTCA  
TAGTTGACTCCACAGATCCGGGAGGGACCTTGTGCCAGTGTGGGCGCCCCGGACCGCCACCCCGCAGT  
GGCCATGGAGGATGCCTTCGGGGCAGCCGTGGTACCCTGTGGGACAGCGATGCACACACCAGGAGAAG  
CCCACCGATGCCTACGGAGAGCTGGACTCACGGGGGCCGGCCGAAGCACAGCAATTTCTCCGGCTCT  
CTGACCGAACGGATCCAGCTGCAGTTTATAGTCTGGTCACACGCACATGGGGCTTCGGTCCCGCAACCT  
GGTGGTGTCACTGCTGGGGGATCGGGGGCCCGTCCAGACCTGGCTGCAGGACCTGCTGCCTGCT  
GGGCTGGTGGGGCTGCCAGAGCACAGGAGCCTGGATTGTCACCTGGGGTCTGCACACGGGCATCGGCC  
GGCATGTTGGTGTGGCTGTACGGGACCATCAGATGGCCAGCACTGGGGGACCAAGGTGGTGGCCATGGG  
TGTGGCCCCCTGGGGTGTGGTCCGGAATAGAGACACCCTCATCAACCCCAAGGGCTCGTTCCCTGCGAGG  
TACCGTGGCGCGGTGACCCGGAGGACGGGGTCCAGTTTCCCCTGGACTACAACCTACTCGGCCTTCTCC  
TGGTGGACGACGGCACACACGGCTGCCTGGGGGGCAGAACCGCTTCCGCTTGCCTGGAGTCTACAT  
CTCACAGCAGAAGACGGGCGTGGGAGGGACTGGAATTGACATCCCTGTCTCCTCCTGATTGATGGT  
GATGAGAAGATGTTGACGCGAATAGAGAACGCCACCCAGGCTCAGCTCCCATGCTCCTCGTGGCTGGCT  
CAGGGGGAGCTGCGGACTGCCTGGCGGAGACCCTGGAAGACACTTGGCCCCAGGGAGTGGGGGAGCCAG  
GCAAGGCGAAGCCCGAGATCGAATCAGGCGTTTCTTCCAAAGGGGACCTTGAGGTCTGCAGGCCAG  
GTGGAGAGGATTATGACCCGGAAGGAGCTCCTGACAGTCTATTCTTCTGAGGATGGGTCTGAGGAATTCG  
AGACCATAGTTTTGAAGGCCCTTGTGAAGCCTGTGGGAGCTCGGAGGCCTCAGCCTACCTGGATGAGCT  
GCGTTTGGCTGTGGCTTGAACCCGCTGGACATTGCCAGAGTGAACCTTTTCGGGGGACATCCAATGG  
CGGCTCTCCATCTCGAAGCTTCCCTCATGGACGCCCTGCTGAATGACCGCCTGAGTTCGTGCGCTTGC  
TCATTTCCACGGCCTCAGCCTGGGCCACTTCTGACCCCGATGCGCCTGGCCAACTCTACAGCGCGGC  
GCCCTCAACTCGCTCATCCGAACCTTTGGACCAGGCGTCCCACAGCGCAGGCACCAAGCCCCAGCC



[View online >](#)

CTAAAAGGGGGAGCTGCGGAGCTCCGGCCCCCTGACGTGGGGCATGTGCTGAGGATGCTGCTGGGAAGA  
TGTGCGCGCCGAGGTACCCCTCCGGGGGCGCTGGGACCCTACCCAGGCCAGGGCTTCGGGGAGAGCAT  
GTATCTGCTCTCGGACAAGGCCACCTCGCCGCTCTCGCTGGATGCTGGCCTCGGGCAGGCCCCCTGGAGC  
GACCTGCTTCTTTGGGCACTGTTGCTGAACAGGGCACAGATGGCCATGTACTTCTGGGAGATGGTTCCA  
ATGCAGTTTCTCAGCTCTTGGGGCTGTTGCTGCTCCGGGTGATGGCACGCCTGGAGCCTGACGCTGA  
GGAGGCAGCACGGAGGAAAGACCTGGCGTTCAAGTTTGAGGGGATGGGCGTTGACCTCTTTGGCGAGTGC  
TATCGCAGCAGTGAGGTGAGGGCTGCCCGCTCCTCCTCCGTGCTGCCCGCTCTGGGGGATGCCACTT  
GCCTCCAGCTGGCCATGCAAGCTGACGCCCGTGCCTTCTTTGCCAGGATGGGGTACAGTCTCTGCTGAC  
ACAGAAGTGGTGGGAGATATGGCCAGCACTACCCATCTGGGCCCTGTTCTCGCCTTCTTTGCCCT  
CCACTCATCTACACCCGCTCATCACCTTCAGGAAATCAGAAGAGGAGCCACACGGGAGGAGCTAGAGT  
TTGACATGGATAGTGTCATTAATGGGAAGGGCTGTCCGGACGGCGGACCCAGCCGAGAAGACGCCGCT  
GGGGTCCCGCCAGTCCGGCCGTCCGGTTGCTGCGGGGGCCGCTGCGGGGGCGCCGGTGCCTACGC  
CGCTGGTTCCTTCTGGGGCGCCGGTGACCATCTTCATGGGCAACGTGGTACGTACCTGCTGTTCC  
TGCTGCTTTTCTCGGGGTGCTGCTCGTGATTCCAGCCGGCGCCCGCCGGCTCCCTGGAGCTGCTGCT  
CTATTTCTGGGCTTTCACGCTGCTGTGCGAGAACTGCGCCAGGGCCTGAGCGGAGCGGGGGCAGCCTC  
GCCAGCGGGGGCCCCGGCCTGGCCATGCCTCACTGAGCCAGCGCCTGCGCCTCTACCTCGCCGACAGCT  
GGAACCACTGCGACCTAGTGGCTCTCACCTGCTTCTCCTGCGGCTGGGCTGCCGGCTGACCCCGGTTT  
GTACCACCTGGGCCGCACTGTCTCTGCACTCGACTTTCATGGTTTTACGGTGCGGCTGCTTACATCTTC  
ACGGTCAACAAACAGCTGGGGCCCAAGATCGTCATCGTGAGCAAGATGATGAAGGACGTGTTCTTCTTCC  
TCTTCTTCTCGGCGTGTGGTGGTAGCCTATGGCGTGGCCACGGAGGGGCTCCTGAGGCCACGGGACAG  
TGACTTCCCAAGTATCCTGCGCCGCTTCTACCGTCCCTACCTGCAGATCTTCGGGACAGATCCCCAG  
GAGGACATGGACGTGGCCTCATGGAGCACAGCAACTGCTCGTGAGCCCGGCTTCTGGGACACCCCTC  
CTGGGGCCAGGGGGCACCTGCGTCTCCAGTATGCCAACTGGCTGGTGGTGTGCTCCTCGTCATCTT  
CCTGCTCGTGGCAACATCCTGCTGGTCAACTTGTCTATTGCCATGTTAGTTACACATTGCGCAAAGTA  
CAGGGCAACAGCGATCTCTACTGGAAGGCGCAGCGTTACCGCCTCATCCGGGAATTCCACTCTCGGCCCG  
CGCTGGCCCCGCCCTTTATCGTCATCTCCCACTTGCCTCCTGCTCAGGCAATTGTGCAGGCGACCCCG  
GAGCCCCAGCCGCTCCTCCCGGCCCTCGAGCATTTCGGGTTTACCTTTCTAAGGAAGCCGAGCGGAAG  
CTGCTAACGTGGGAATCGGTGCATAAAGGAGAACTTTCTGCTGGCACGCGCTAGGGACAAGCGGGAGAGCG  
ACTCCGAGCGTCTGAAGCGCACGTCCAGAAGGTGGACTTGGCACTGAAACAGCTGGGACACATCCGCGA  
GTACGAACAGCGCCTGAAAGTGTGGAGCGGGAGGTCCAGCAGTGTAGCCGCTCCTGGGTGGGTGCC  
GAGGCCCTGAGCCGCTCTGCCTTGTGCCCCAGGTGGGCGCCACCCCTGACCTGCTGGGTCCAAG  
AC

ACGCGTACGCGGGCCGCTCGAGCAGAACTCATCTCAGAAGAGGATCTGGCAGCAAATGATATCCTGGATT  
ACAAGGATGACGACGATAAGGTTTAA

Protein Sequence: >RC216888 representing NM\_017636  
 Red=Cloning site Green=Tags(s)

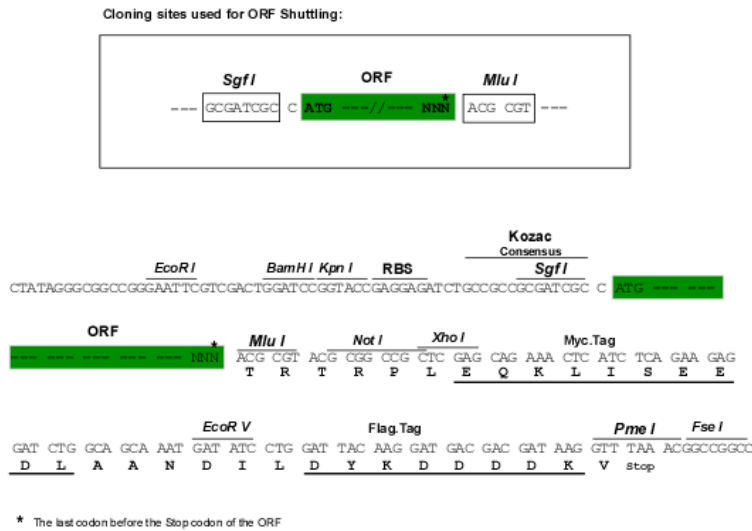
```
MVVPEKEQSWIPKIFKKKTCTTFIVDSTDPGGTLCQCGRPRTAHPAVAMEDAFGAAVVTVWSDAHTTEK
PTDAYGELDFTGAGRKHSNFLRLSDRTDPAAVYSLVTRTWGFRAPNLVSVLGGSGGPVLQTLWQDLLRR
GLVRAAQSTGAWIVTGLLHTGIGRHVGVAVRDHQMASTGGTKVVAMGVAPWGVVNRDRTLINPKGSFPA
YRWRGDPEDGVQFPLDYNYSAFFLVDDGTHGCLGGENRFRRLRESYISQKGTGVTGIDIPVLLLLIDG
DEKMLTRIEATQAQLPCLLVAGSGGAADCLAEETLAPGSGGARQGEARDRIRRFFPKGDLEVLQAQ
VERIMTRKELLTVYSSEDSGEFETIVLKALVKACGSSEASAYLDELRLAVAWNVRDIAQSELFRGDIQW
RSFHLEASLMDALLNDRPEFVRLLI SHGLSLGHFLTPMRLAQLYSAAPSNLIRNLLDQASHSAGTKAPA
LKGGAAELRPPDVGHVLRMLLGKMCAPRYPSSGAWDPHPGQGFGESEMYLLSDKATSPLSLDAGLGQAPWS
DLLLWALLNRAQMAMYFWEMGSNAVSSALGACLLLRVMARLEPDAEEAARRKDLAFKFEKMGVDFLFGEC
YRSSEVRAARLLLRRCPWGDATCLQLAMQADARAFFAQDGVQSLLTQKWWGDMASTTPIWALVLAFFCP
PLIYTRLITFRKSEETREELEFDMDSVINGEGPVGTADPAEKTPLVPRQSGRPGCCGRCGGRRCLR
RWFHFWGAPVTIFMGNVVSYLELLFSLRVLLVDFQPAPPGSLELLL YFAFTLLCEELRQGLSGGGSL
ASGGPGPGHASLSQRLRLYLADSWNQCDLVALTCFLLGVGCRLTPGLYHLGRTVLCIDFMVFTVRLLIHIF
TVNKQLGPKIVIVSKMMKDVFFLFFLVGWLVA YGVATEGLLRPRSDFFSILRRVYRPLYQIFGQIPQ
EDMDVALMEHSNCSSEPGFWAHPGAQAGTCVSYANWLVVLLL VIFLLVANILLVNLIIAMFSYTFGKV
QGNSDLYWKAQRYRLIREFHSPALAPPFIVISHLRLLL RQLCRRPRSPQSSPALEHFRVYLSKEAERK
LLTWESVHKENFLLARARDKRESDSERLKRTSQKVDLALKQLGHIREYEQRLKVLEREVQCCSRVLGWVA
EALSRSALLPPGGPPPDLPGSKD
```

TRTRPLEQKLISEEDLAANDILDYKDDDDKV

Chromatograms: [https://cdn.origene.com/chromatograms/mk6220\\_h08.zip](https://cdn.origene.com/chromatograms/mk6220_h08.zip)

Restriction Sites: SgfI-MluI

Cloning Scheme:

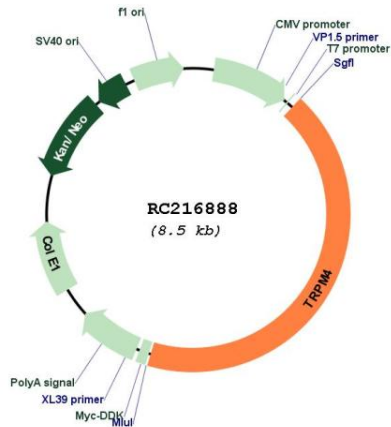


ACCN: NM\_017636

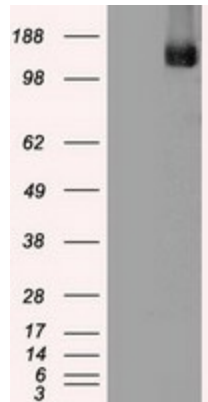
ORF Size: 3642 bp

|                               |   |
|-------------------------------|---|
| <b>OTI Disclaimer:</b>        | The molecular sequence of this clone aligns with the gene accession number as a point of reference only. However, individual transcript sequences of the same gene can differ through naturally occurring variations (e.g. polymorphisms), each with its own valid existence. This clone is substantially in agreement with the reference, but a complete review of all prevailing variants is recommended prior to use. <a href="#">More info</a>  |
| <b>OTI Annotation:</b>        | This clone was engineered to express the complete ORF with an expression tag. Expression varies depending on the nature of the gene.  |
| <b>Components:</b>            | The ORF clone is ion-exchange column purified and shipped in a 2D barcoded Matrix tube containing 10ug of transfection-ready, dried plasmid DNA (reconstitute with 100 ul of water).  |
| <b>Reconstitution Method:</b> | <ol style="list-style-type: none"> <li>1. Centrifuge at 5,000xg for 5min.</li> <li>2. Carefully open the tube and add 100ul of sterile water to dissolve the DNA.</li> <li>3. Close the tube and incubate for 10 minutes at room temperature.</li> <li>4. Briefly vortex the tube and then do a quick spin (less than 5000xg) to concentrate the liquid at the bottom.</li> <li>5. Store the suspended plasmid at -20°C. The DNA is stable for at least one year from date of shipping when stored at -20°C.</li> </ol> |
| <b>RefSeq:</b>                | <a href="#">NM_017636.4</a>   |
| <b>RefSeq Size:</b>           | 4061 bp   |
| <b>RefSeq ORF:</b>            | 3645 bp   |
| <b>Locus ID:</b>              | 54795   |
| <b>UniProt ID:</b>            | <a href="#">Q8TD43</a>  |
| <b>Cytogenetics:</b>          | 19q13.33  |
| <b>Protein Families:</b>      | Druggable Genome, Ion Channels: Transient receptor potential, Transmembrane   |
| <b>MW:</b>                    | 134.1 kDa   |
| <b>Gene Summary:</b>          | The protein encoded by this gene is a calcium-activated nonselective ion channel that mediates transport of monovalent cations across membranes, thereby depolarizing the membrane. The activity of the encoded protein increases with increasing intracellular calcium concentration, but this channel does not transport calcium. [provided by RefSeq, Mar 2016]  |

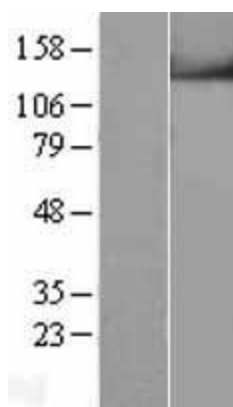
Product images:



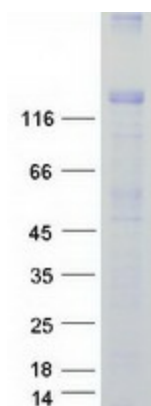
Circular map for RC216888



HEK293T cells were transfected with the pCMV6-ENTRY control (Cat# [PS100001], Left lane) or pCMV6-ENTRY TRPM4 (Cat# RC216888, Right lane) cDNA for 48 hrs and lysed. Equivalent amounts of cell lysates (5 ug per lane) were separated by SDS-PAGE and immunoblotted with anti-TRPM4 (Cat# [TA500381]). Positive lysates [LY413636] (100ug) and [LC413636] (20ug) can be purchased separately from OriGene.



Western blot validation of overexpression lysate (Cat# [LY413636]) using anti-DDK antibody (Cat# [TA50011-100]). Left: Cell lysates from untransfected HEK293T cells; Right: Cell lysates from HEK293T cells transfected with RC216888 using transfection reagent MegaTran 2.0 (Cat# [TT210002]).



Coomassie blue staining of purified TRPM4 protein (Cat# [TP316888]). The protein was produced from HEK293T cells transfected with TRPM4 cDNA clone (Cat# RC216888) using MegaTran 2.0 (Cat# [TT210002]).