

Product datasheet for **RC216875**

DPP6 (NM_001936) Human Tagged ORF Clone

Product data:

| | |
|---------------------------|---|
| Product Type: | Expression Plasmids |
| Product Name: | DPP6 (NM_001936) Human Tagged ORF Clone |
| Tag: | Myc-DDK |
| Symbol: | DPP6 |
| Synonyms: | DPL1; DPPX; MRD33; VF2 |
| Mammalian Cell Selection: | Neomycin |
| Vector: | pCMV6-Entry (PS100001) |
| E. coli Selection: | Kanamycin (25 ug/mL) |



[View online »](#)

ORF Nucleotide
Sequence:

>RC216875 representing NM_001936
 Red=Cloning site Blue=ORF Green=Tags(s)

TTTTGTAATACGACTCACTATAGGGCGGCCGGAATTCGTCGACTGGATCCGGTACCGAGGAGATCTGCC
 GCC**CGCATCGCC**

ATGACCACAGCCAAGGAGCCAAGCGCTTCGGGAAATCCGTGCAGCAGCAGGAACAGGAGCTGGTGGGGA
 GTAACCCCTCCGCAGAGGAATTGGAAAGGAATAGCAATTGCACTGCTTGTCACTTCTGGTCATCTGCTCCTT
 GATCGTCACCTCGGTCACTTCTGACACCAGCGGAAGATAATAGTCTGTCTCAAAAAGAAGAAGGCACT
 GTAGAAGATCTTTCAGTGAAGACTTCAAATTCATGACCCCGAGGCTAAGTGGATAAGTGATACAGAAT
 TCATCTACAGAGAACAGAAAGGAACAGTGAAGTGTGAAACAAATACTTCTACTGTCTTAAT
 AGAAGGCCAAAAAATTGAATCATTAAGAGCCATCAGATATGAAATATCTCCAGATAGAGAGTATGCACTT
 TTTTCATACAATGTGGAACCCATATATCAACACTCGTACTGGATATTATGCTCTGAGCAAAATTCCTC
 ATGGGGATCCTCAAAGTCTGGACCCACCAGAAGTCAGCAATGCAAAGCTTCAGTATGCAGGATGGGGCC
 TAAAGGCCAACAGCTGATATTTATTTTAAAAACAATATCTACTACTGTGCACATGTCGGGAAACAGGCC
 ATCCGTGTGGTCTCCACTGGCAAGGAAGGTGTGATTTACAATGGCCTCAGTACTGGCTGTATGAAGAGG
 AGATTTTGAAGACACACATCGCACACTGGTGGTCTCCGGATGGCAGGAGACTCGCCTACGCCCATCAA
 TGATTCCTGTGCTCCCATCATGGAGCTCCCAACTTACACCGGCTCCATCTACCCACCGTGAAGCCCTAC
 CACTATCCCAAGGCTGGAAGTGAGAACCCAGCATTTCCTACACGTTATTGGCTTAAATGGACCCACCC
 ATGATCTGGAGATGATGCCGCTGATGATCCACGGATGAGGGAGTACTACATCACCATGGTGAAGTGGGC
 CACCAGCACCAAGGTCGCCGTGACCTGGCTGAACCGGGCGCAGAACGTGTCCATCCTCACCTCTGCGAC
 GCCACCACGGGGTCTGCACGAAGAACACGAGGATGAAAGTGAAGCTGGCTCCACAGACAGAATGAAG
 AACCTGTGTTCTCCAAGGATGGCCGAAAGTTTTCTTCATCAGAGCCATCCCCAGGGAGGACGAGGGAA
 ATTCTATCACATCACGGTGTCTCGTCCAGCCAAACAGCAGCAACGACAACATCCAGTCCATCACCTCC
 GGGGACTGGGACGTGACCAAGATCCTAGCCTACGATGAGAAGGGGAATAAGATCTACTTCTGAGACCGG
 AGGACCTGCCTCGGAGACGACAACCTTACAGTGCACACACGGTGGGCAACTTCAACAGGCAGTGCCTCTC
 CTGTGACCTGGTTGAGAAGTGCACCTACTTACAGCCTTCTTACGCCATAGCATGGACTTCTTCTGCTC
 AAGTGCAGAGGCTGCTGGTGTCTATGGTACGGTGCACAACACAACAGATAAGAAAAAATGTTTGACC
 TAGAAACAAATGAACATGTCAAGAAGGCCATAAATGACCGACAGATGCCTAAAGTGAATACAGGGACAT
 TGAGATTGATGATTACAACCTGCCATGCAGATACTGAAGCCAGCAACCTTACCAGACACCCACTAC
 CCTCTGCTCCTGGTGGTGGATGGCACCCCGGGCAGCCAGAGTGTGGCTGAGAAGTTCGAGGTGAGCTGGG
 AGACGGTGTGGTGGAGCAGCCACGGCGCGTGGTGGTAAAGTGTGACGGCGTGGCAGCGGCTTCCAAGG
 GACCAAGCTCCTGCACGAAGTGAGGCGCGGCTGGGCTTGTGGAGGAGAAGGACCAGATGGAGGCGGTG
 CGGACGATGCTGAAGGAGCAGTACATTGACAGGACGCGCTGGCCGTGTTTGGGAAGGATTACGGTGGCT
 ACCTGAGCACCTACATCCTCCAGCAAAGGGAGAAAATCAAGGCCAGACATTCACCTGCGGCTCTGCTCT
 CTCTCCAATAACAGACTTCAAATCTATGCCTCTGCGTTTTCCGAGAGGTAATGGGCTCCATGGACTT
 GACAACAGAGCATACGAGATGACCAAGGTAGCCCATCGAGTCTCCGCGCTGGAAGAACAGCAGTTCCTGA
 TCATTTCATCCACTGCCGATGAAAAAATTCATTTCCAGCACACAGCAGAACTATTACACAATAATTAG
 GGGAAAGGCTAATTACAGCTTACAGATTTACCCGGACGAAAGCCATTACTTTACCAGCTCCAGCCTCAA
 CAGCATCTGTACCGTCCATCATCAACTTCTCGTGGAATGCTTCAGGATCCAGGACAAACTGCTGACAG
 TCACAGCGAAAGAGGACGAGGAGGAGGAC

ACGCGTACGCGGCCGCTCGAGCAGAACTCATCTCAGAAGAGGATCTGGCAGCAATGATATCCTGGATT
 ACAAGGATGACGACGATAAGGTTTAA

Protein Sequence: >RC216875 representing NM_001936
Red=Cloning site Green=Tags(s)

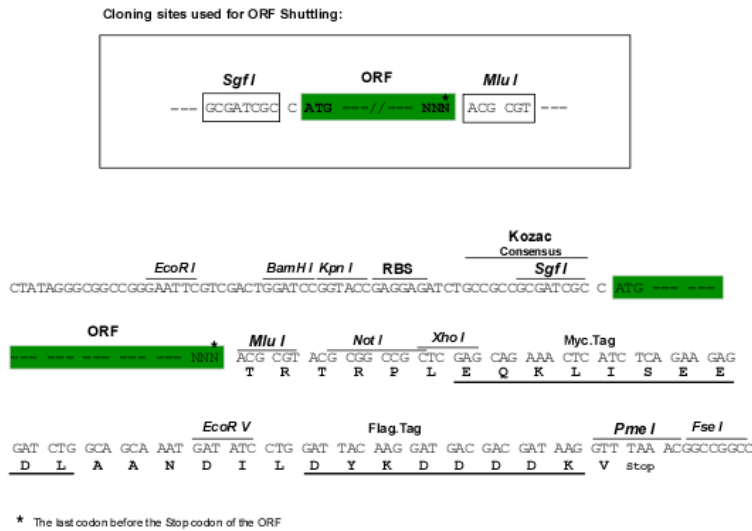
MTAKEPSASGKSVQQEQELVGSNPPQRNWKGIALLVILVICSLIVTSVILLTPAEDNSLSQKKKVT
VEDLFSDFKIHDPEAKWISDTEFIYREQKGTVRLWNVETNTSTVLEGGKIESLRAIRYEISPDREYAL
FSYNVEPIYQHSYTGYYVLSKIPHGDPQSLDPPEVSNAKLQYAGWGPKGQQLIFIFENNIYYCAHVKGQA
IRVVSTGKEGVIYNGLSDWLYEEEILKTHIAHWWSPDGTRELAYAAINDSRVPIMELPTYTGSIIYPTVKPY
HYPKAGSENPISLHVIGLNGPTHLEMMPPDDPRMREYYITMVKWATSTKVAVTWLNRAQNVSILTLCD
ATTGVCTKKHEDESEAWLHRQNEEPVFSKDGRKFFFIRAIPQGGRGKIFYHITVSSSQPNSSNDNIQSITS
GDWDVTKILAYDEKGNKIYFLSTEDLPRRRQLYSANTVGNFNRQCLSCDLVENCTYFSASF SHSMDFFLL
KCEGPGVPMVTVHNTTDKKKMFDELTNEHVKKAINDRQMPKVEYRDIEIDDYNLPMQILKPATFTDTTHY
PLLLVVDGTPGSQVAEKFEVSWETVMVSSHGAVVVKCDGRGSGFGTKLLHEVRRRLGLLEEKDQMEAV
RTMLKEQYIDRTRVAVFGKDYGGYLSTYILPAKGENQGQTFTCGSALSPITDFKL YASAFSERYLGLHGL
DNRAYEMTKVAHRVSAL EEQQFLIIHPTADEKIHFOHTAELITQLIRGKANYSLQIYPDESHYFTSSSLK
QHL YRSIINFFVECFRIQDKLLTVTAKEDDEED

TRTRPLEQKLI SEEDLAANDILDYKDDDDKV

Chromatograms: https://cdn.origene.com/chromatograms/mk6826_a02.zip

Restriction Sites: Sgfl-Mlul

Cloning Scheme:



ACCN: NM_001936

ORF Size: 2409 bp

OTI Disclaimer: The molecular sequence of this clone aligns with the gene accession number as a point of reference only. However, individual transcript sequences of the same gene can differ through naturally occurring variations (e.g. polymorphisms), each with its own valid existence. This clone is substantially in agreement with the reference, but a complete review of all prevailing variants is recommended prior to use. [More info](#)

OTI Annotation: This clone was engineered to express the complete ORF with an expression tag. Expression varies depending on the nature of the gene.

Components: The ORF clone is ion-exchange column purified and shipped in a 2D barcoded Matrix tube containing 10ug of transfection-ready, dried plasmid DNA (reconstitute with 100 ul of water).

Reconstitution Method:

1. Centrifuge at 5,000xg for 5min.
2. Carefully open the tube and add 100ul of sterile water to dissolve the DNA.
3. Close the tube and incubate for 10 minutes at room temperature.
4. Briefly vortex the tube and then do a quick spin (less than 5000xg) to concentrate the liquid at the bottom.
5. Store the suspended plasmid at -20°C. The DNA is stable for at least one year from date of shipping when stored at -20°C.

RefSeq: [NM_001936.5](#)

RefSeq Size: 3560 bp

RefSeq ORF: 2412 bp

Locus ID: 1804

Cytogenetics: 7q36.2

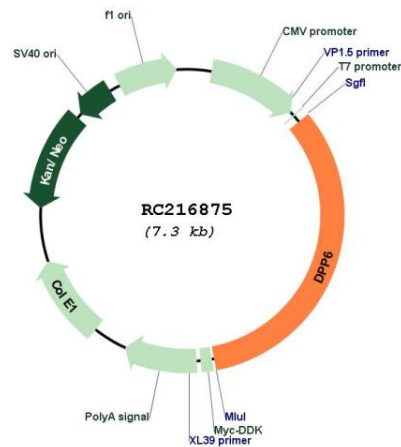
Domains: Peptidase_S9, DPPIV_N_term

Protein Families: Druggable Genome, Protease, Transmembrane

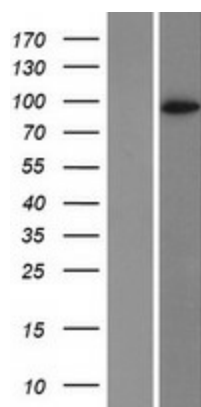
MW: 91.2 kDa

Gene Summary: This gene encodes a single-pass type II membrane protein that is a member of the peptidase S9B family of serine proteases. This protein has no detectable protease activity, most likely due to the absence of the conserved serine residue normally present in the catalytic domain of serine proteases. However, it does bind specific voltage-gated potassium channels and alters their expression and biophysical properties. Variations in this gene may be associated with susceptibility to amyotrophic lateral sclerosis and with idiopathic ventricular fibrillation. Alternative splicing results in multiple transcript variants. [provided by RefSeq, Mar 2014]

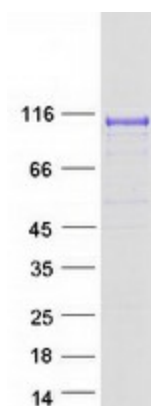
Product images:



Circular map for RC216875



Western blot validation of overexpression lysate (Cat# [LY419638]) using anti-DDK antibody (Cat# [TA50011-100]). Left: Cell lysates from untransfected HEK293T cells; Right: Cell lysates from HEK293T cells transfected with RC216875 using transfection reagent MegaTran 2.0 (Cat# [TT210002]).



Coomassie blue staining of purified DPP6 protein (Cat# [TP316875]). The protein was produced from HEK293T cells transfected with DPP6 cDNA clone (Cat# RC216875) using MegaTran 2.0 (Cat# [TT210002]).