

Product datasheet for **RC216860**

SRCRB4D (SSC4D) (NM_080744) Human Tagged ORF Clone

Product data:

Product Type:	Expression Plasmids
Product Name:	SRCRB4D (SSC4D) (NM_080744) Human Tagged ORF Clone
Tag:	Myc-DDK
Symbol:	SRCRB4D
Synonyms:	S4D-SRCRB; SRCRB-S4D; SRCRB4D
Mammalian Cell Selection:	Neomycin
Vector:	pCMV6-Entry (PS100001)
E. coli Selection:	Kanamycin (25 ug/mL)



[View online »](#)

ORF Nucleotide Sequence:

>RC216860 representing NM_080744
 Red=Cloning site Blue=ORF Green=Tags(s)

TTTTGTAATACGACTCACTATAGGGCGGCCGGAATTCGTCGACTGGATCCGGTACCGAGGAGATCTGCC
 GCC**GCGATCGCC**

ATGCACAAGGAAGCAGAGATGCTAATTGGTCCCAGCTGGATGAGAAGCGCTGGGGTGGAGTTGGGAG
 ATGGGAGTGCTGCCCTCCCTTCTCCCAAGCCCTGTCTTCTTCTCCTGCCACTGGCCAGCGC
 CCTACAGCCCACTCCACTGCCCTTTCAAGAGCTGAGGCTGGTGGGGGGCCCCAGCCGCTGCCGGGGCCG
 CTGGAAGTCATGCACGGTGGCTCCTGGGCAGCGTCTGTGATGACGACTGGGACGTGGTGGACGCCAACG
 TAGTGTGTCGCCAGCTGGGCTGTGGCTGGCACTGCCCGTCCACGGCCCTTGCCTTTGGCCAAGGCCG
 AGGCCCATCCTGCTGGACAACGTGGAGTGCCGCGGCAGGAAGCTGCGCTGAGCGAGTGCAGCGCCG
 GGCTGGGGCGTCCACAATTGCTTCTACTACGAGGATGTGGCTGTCTGTGTGATGAATCTTGCCAACGC
 AGCCCCAACAAAGGAAGATGTTAAACAGTAGAGCACCTCTACGACTGCCGAATGAAAAAGTGAGGG
 CAGCGTACGCCTGGTAGGGGGCGGAACCTGTGTGAGGGCCGAGTGGAGATCCTGCACAGTGGCCTGTGG
 GGACCGTGTGTGACGACTGGGGGTGCCGGATGCCGCTGTGGTCTGTCTGCTGAGTGGGCTGCGGGG
 CGGCCATGGCCGCCACCACCAACGCCTTCTCGGCTATGGCACCGGACACATCCTGCTGGACAACGTGCA
 CTGCGAAGGGCGGCGAGCCCCGCTGGCAGCCTGCCAGAGCCTGGGCTGGGGTGTGCAACTGCGGCCAC
 CACGAGGACGCGGGCGCGCTCTGCGCAGGCCTGGGTCCCCAACGCTCACAGCACTGCCATCCTCAGCCA
 CAAGAGAGGACTGGGCTTGGCAGACAGATCCGTCGCTACAGGAGTTGGCCCCAGCCTTCCCGGGAGAC
 AGCACTGCTCACACCGCCGCTGGGCCGCGGGAAGAAAAGTGGACGGCTGCGACTGGTGGGCGGCCCG
 GGTCCGTGCCCGCGCGCTGGAGTGTGCACGCCGGGGCTGGGGCACCGTGTGCGACGATGACTGGG
 ACTTTGCGGACGCGCGCTGGCCTGCCGGAAGCGGGCTGCGGGCTGCGCTGGGCGCTACGGGACTGGG
 CCACTTCGGCTACGGCCCGCGGCCCGTGTCTGTGACAACGTGGGCTGCGCCGGCACCGAGGCTCGCCTG
 AGCGACTGCTTCCACTGGGCTGGGGCCAGCACAACTGCGGCCACCACGAGGACGCGGGAGCGCTCTGCG
 CAGGCCAGAGGAGTGGGACTGCAAGTCCAGCAGGATGGTTCTGAGACCACGCGGGTGCCACTCCTCG
 GCCCAGGGACGGGCATCTACGTCTGGTCAATGGAGCCACCGATGCGAGGGACGTGTAGAGCTCTACCTA
 GGGCAACGGTGGGCACTGTCTGTGATGATGCTTGGGACTGCGGGCAGCCGGTGTCTGTGCCGCCAGC
 TGGGCTGTGGCCAGGCCCTCGCAGCCCCTGGCAGGCTCACTTTGGCCAGGCCGAGGCCCATCTCTCT
 GGACAATGTCAAGTGCCTGGGGAAGAAAGTGTCTGTCTGCTCTCATATCCGCTGGGATGCCAC
 AACTGTGACCACAGCGAGGATGCCAGTGTCTGTGCCAGCCTTCA

ACGCGTACGCGGGCCGCTCGAGCAGAAACTCATCTCAGAAGAGGATCTGGCAGCAAATGATATCCTGGATT
 ACAAGGATGACGACGATAAGGTTTAA

Protein Sequence:

>RC216860 representing NM_080744
 Red=Cloning site Green=Tags(s)

MHKEAEMLIQPQLDEKRWGRLGDGSAAPPFLPQALSFLLLLPLASALQPTPLPFQELRLVGGPSRCRGR
 LEVMHGGSWGVCDDDDWDVVDANVCRQLGCGLALPVPRPLAFGQGRGPILLDNVECRGQEAALSECGR
 GWGVHNCFHVEDVAVLCDEFLLPTQPPTKMLTSRAPPTLPNGKSEGSVRLVGGANLQGRVEILHSGLW
 GTVCDDDWGLPDAAVVCRQLGCGAAMAATTNAFFGYGTGHILLDNVHCEGGEPRLAACQSLGWGVHNCGH
 HEDAGALCAGLGPPTLTALPSSATREDWAWQTDPSATGVGPQPSRETTAATAWAAGKKSRLRLVGGP
 GPCRGRVEVLHAGGWGTVCDDDWDFADARVACREAGCGPALGATGLGHFYGRGPVLLDNVGCAGTEARL
 SDCFHLGWQHNCGHEDAGALCAGPEELGLVQVQDGETTRVPTPRPRDGLRLVNGAHRCEGRVELYL
 GQRWGTVCDDAWDLRAAGVLCRQLGCGQALAAPGEAHFGPGRGPILLDNVKCRGEEASALLLCSHIRWDAH
 NCDHSEDASVLCQPS

TRTRPLEQKLISEEDLAANDILDYKDDDDKV

Chromatograms:

https://cdn.origene.com/chromatograms/mk8018_f03.zip

Restriction Sites:

Sgfl-Mlul

Cloning Scheme:


ACCN: NM_080744

ORF Size: 1725 bp

OTI Disclaimer: The molecular sequence of this clone aligns with the gene accession number as a point of reference only. However, individual transcript sequences of the same gene can differ through naturally occurring variations (e.g. polymorphisms), each with its own valid existence. This clone is substantially in agreement with the reference, but a complete review of all prevailing variants is recommended prior to use. [More info](#)

OTI Annotation: This clone was engineered to express the complete ORF with an expression tag. Expression varies depending on the nature of the gene.

Components: The ORF clone is ion-exchange column purified and shipped in a 2D barcoded Matrix tube containing 10ug of transfection-ready, dried plasmid DNA (reconstitute with 100 ul of water).

- Reconstitution Method:**
1. Centrifuge at 5,000xg for 5min.
 2. Carefully open the tube and add 100ul of sterile water to dissolve the DNA.
 3. Close the tube and incubate for 10 minutes at room temperature.
 4. Briefly vortex the tube and then do a quick spin (less than 5000xg) to concentrate the liquid at the bottom.
 5. Store the suspended plasmid at -20°C. The DNA is stable for at least one year from date of shipping when stored at -20°C.

Note: Plasmids are not sterile. For experiments where strict sterility is required, filtration with 0.22um filter is required.

RefSeq: [NM_080744.2](#)

RefSeq Size: 2806 bp

RefSeq ORF: 1728 bp

Locus ID: 136853

UniProt ID: [Q8WTU2](#)

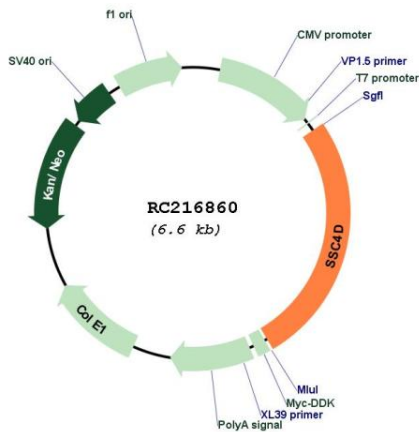
Cytogenetics: 7q11.23

Protein Families: Druggable Genome

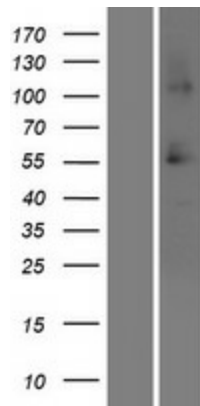
MW: 55.8 kDa

Gene Summary: The scavenger receptor cysteine-rich (SRCR) superfamily is an ancient and highly conserved group of cell surface and/or secreted proteins, some of which are involved in the development of the immune system and the regulation of both innate and adaptive immune responses. Group B SRCR domains usually contain 8 regularly spaced cysteines that give rise to a well-defined intradomain disulfide-bond pattern.[supplied by OMIM, Apr 2004]

Product images:



Circular map for RC216860



Western blot validation of overexpression lysate (Cat# [LY409061]) using anti-DDK antibody (Cat# [TA50011-100]). Left: Cell lysates from untransfected HEK293T cells; Right: Cell lysates from HEK293T cells transfected with RC216860 using transfection reagent MegaTran 2.0 (Cat# [TT210002]).