

Product datasheet for RC216858

Apolipoprotein L 2 (APOL2) (NM_145637) Human Tagged ORF Clone

Product data:

Product Type:	Expression Plasmids
Product Name:	Apolipoprotein L 2 (APOL2) (NM_145637) Human Tagged ORF Clone
Tag:	Myc-DDK
Symbol:	Apolipoprotein L 2
Synonyms:	APOL-II; APOL3
Mammalian Cell Selection:	Neomycin
Vector:	pCMV6-Entry (PS100001)
E. coli Selection:	Kanamycin (25 ug/mL)
ORF Nucleotide Sequence:	>RC216858 ORF sequence Red=Cloning site Blue=ORF Green=Tags(s)

TTTTGTAATACGACTCACTATAGGGCGGCCGGAATTCGTCGACTGGATCCGGTACCGAGGAGATCTGCC
GCC**CGATCGCC**

ATGAACCCAGAGAGCAGTATCTTTATTGAGGATTACCTTAAGTATTTCCAGGACCAAGTGAGCAGAGAGA
ATCTGCTACAACGCTGACTGATGATGAAGCCTGGAATGGATTCGTGGCTGCTGCTGAACGCCAGGGA
TGAGGCAGATGAGCTCCGTAAGCTCTGAACAAGCTTGAAGTCACATGGTCATGAAGGACAAAAACCGC
CACGATAAAGACCAGCAGCACAGGCAGTGGTTTTTAAAGAGTTTCTCGGTTGAAAAGGGAGCTTGAGG
ATCACATAAGGAAGCTCCGTGCCCTTGAGAGGAGTTGAGCAGGTCCACAGAGGCACCACCATTGCCAA
TGTGGTGTCCAACCTGTGGTGGTACTACCTCTGGCATCCTGACCCTCCTCGGCTGGGTCTGGCACCCCTC
ACAGAAGGAATCAGTTTTGTGCTCTTGGACTGGCATGGGTCTGGGAGCAGCAGCTGCTGTGGCTGGGA
TTACCTGCAGTGTGGTAGAACTAGTAAACAAATTCGCGGCACGAGCCCAAGCCCGCAACTGGACCAAAG
CGGCACCAATGTAGCAAAGGTGATGAAGGAGTTTGTGGGTGGGAACACACCCAATGTTCTTACCTTAGTT
GACAATTGGTACCAAGTCACACAAGGGATTGGGAGGAACATCCGTGCCATCAGACGAGCCAGAGCCAACC
CTCAGTTAGGAGCGTATGCCCCACCCCGCATGTATTGGGCGAATCTCAGCTGAAGGCGGTGAACAGGT
TGAGAGGGTTGTTGAAGGCCCGCCAGGCAATGAGCAGAGGAACCATGATCGTGGGTGCAGCCACTGGA
GGCATCTTGCTTCTGCTGGATGTGGTCAAGCTTGCATATGAGTCAAAGCACTTGTGAGGGGGCAAAGT
CAGAGTCAGCTGAGGAGCTGAAGAAGCGGGCTCAGGAGCTGGAGGGGAAGCTCAACTTTCTACCAAGAT
CCATGAGATGCTGCAGCCAGGCCAAGACCAA

ACGCGTACGCGGCCGCTCGAGCAGAAACTCATCTCAGAAGAGGATCTGGCAGCAAATGATATCCTGGATT
ACAAGGATGACGACGATAAGGTTTAA



[View online »](#)

Protein Sequence: >RC216858 protein sequence
Red=Cloning site Green=Tags(s)

MNPESSIFIEDYLKYFQDQVSRENLLQLLTDDEAWNGFVAAAELPRDEDELKALNKLASHMVMKDKNR
 HDKDQQHRQWFLKEFPRLKRELEDHIRKLRALAEVEVQVHRGTTIANVVSNSVGTTSGLTLLGLGLAPF
 TEGISFVLLDTGMGLGAAAAVAGITCSVVELVNKLARAQARNLDQSGTNVAKVMKEFVGGNTPNVLTLV
 DNWYQVTQIGRNIIRRARANPQLGAYAPPHVIGRISAEGGEQVERVVEGPAQAMSRGTMIVGAATG
 GILLLLDVVSLAYESKHLLLEGAKSESAEELKKRAQELEGKLNFLTKIHEMLQPGQDQ

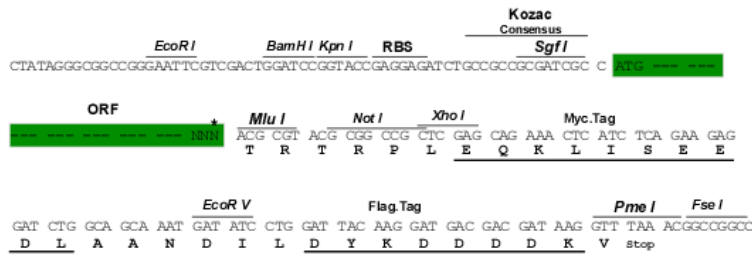
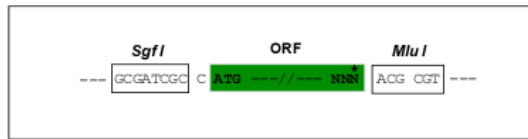
TRTRPLEQKLISEEDLAANDILDYKDDDDKV

Chromatograms: https://cdn.origene.com/chromatograms/mk6391_f12.zip

Restriction Sites: SgfI-MluI

Cloning Scheme:

Cloning sites used for ORF Shuttling:



* The last codon before the Stop codon of the ORF

ACCN: NM_145637

ORF Size: 1011 bp

OTI Disclaimer: The molecular sequence of this clone aligns with the gene accession number as a point of reference only. However, individual transcript sequences of the same gene can differ through naturally occurring variations (e.g. polymorphisms), each with its own valid existence. This clone is substantially in agreement with the reference, but a complete review of all prevailing variants is recommended prior to use. [More info](#)

OTI Annotation: This clone was engineered to express the complete ORF with an expression tag. Expression varies depending on the nature of the gene.

Components: The ORF clone is ion-exchange column purified and shipped in a 2D barcoded Matrix tube containing 10ug of transfection-ready, dried plasmid DNA (reconstitute with 100 ul of water).

Reconstitution Method:

1. Centrifuge at 5,000xg for 5min.
2. Carefully open the tube and add 100ul of sterile water to dissolve the DNA.
3. Close the tube and incubate for 10 minutes at room temperature.
4. Briefly vortex the tube and then do a quick spin (less than 5000xg) to concentrate the liquid at the bottom.
5. Store the suspended plasmid at -20°C. The DNA is stable for at least one year from date of shipping when stored at -20°C.

Note: Plasmids are not sterile. For experiments where strict sterility is required, filtration with 0.22um filter is required.

RefSeq: [NM_145637.2](#)

RefSeq Size: 2686 bp

RefSeq ORF: 1014 bp

Locus ID: 23780

UniProt ID: [Q9BQE5](#)

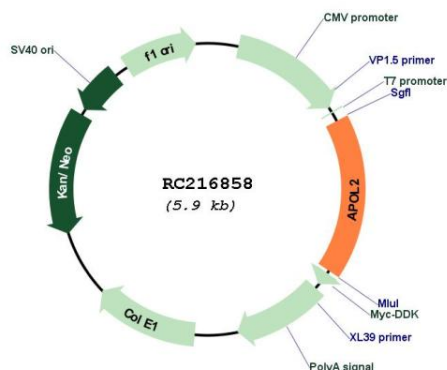
Cytogenetics: 22q12.3

Protein Families: Druggable Genome, Transmembrane

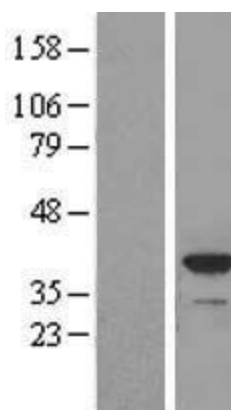
MW: 37.1 kDa

Gene Summary: This gene is a member of the apolipoprotein L gene family. The encoded protein is found in the cytoplasm, where it may affect the movement of lipids or allow the binding of lipids to organelles. Two transcript variants encoding the same protein have been found for this gene. [provided by RefSeq, Jul 2008]

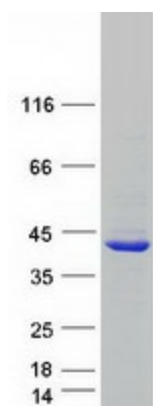
Product images:



Circular map for RC216858



Western blot validation of overexpression lysate (Cat# [LY407937]) using anti-DDK antibody (Cat# [TA50011-100]). Left: Cell lysates from untransfected HEK293T cells; Right: Cell lysates from HEK293T cells transfected with RC216858 using transfection reagent MegaTran 2.0 (Cat# [TT210002]).



Coomassie blue staining of purified APOL2 protein (Cat# [TP316858]). The protein was produced from HEK293T cells transfected with APOL2 cDNA clone (Cat# RC216858) using MegaTran 2.0 (Cat# [TT210002]).