

## Product datasheet for **RC216833**

### PH domain containing family G member 7 (PLEKHG7) (NM\_001004330) Human Tagged ORF Clone

#### Product data:

Product Type:	Expression Plasmids
Product Name:	PH domain containing family G member 7 (PLEKHG7) (NM_001004330) Human Tagged ORF Clone
Tag:	Myc-DDK
Symbol:	PH domain containing family G member 7
Synonyms:	FLJ46688
Mammalian Cell Selection:	Neomycin
Vector:	pCMV6-Entry (PS100001)
E. coli Selection:	Kanamycin (25 ug/mL)



[View online »](#)

**ORF Nucleotide  
Sequence:**

>RC216833 representing NM\_001004330  
 Red=Cloning site Blue=ORF Green=Tags(s)

TTTTGTAATACGACTCACTATAGGGCGGCCGGAATTCGTCGACTGGATCCGGTACCGAGGAGATCTGCC  
 GCC**CGGATCGCC**

ATGATCTTTATGAATACACTAAGATATCTGCAAACCTCATGAATATCTCCTAGATGTGGATTATGGAGAC  
 TTTTGTCAAACCTGGAGGAGTTAACTCAGACAAGCCTTGGTTTTGTGAACAGTCTCTTTGGCATCATCAA  
 GGACTATGTAGACGCTTCTGAGATTTCTCATCACTGGATTTTATTTCCGTGCTCACAAAGTATTTCCGA  
 GGGAGTCTCTGTGAGAGCCACCAGACCTACTGCCTGAACTATTCAGCTGTATCTTTTATCTTGAGAGCC  
 TGAGGCAGAGAGATGACTTTGGAATTTATTTAAAATGGTGTGAGCAGAATGAACAATGCAGACGGCTCCA  
 CGTGCCAGAGCTGCTAGTGGCCCACTACAGAGGCTCACTCGATATCCGTTGTTGCTGAAGAATATCTGG  
 AAAAGGAGCATGGACTCTGCTGAGAAAATCATGATCTACTCCATCAAGGAAAAGTTGAAAAGTCCATCC  
 GGGACCTTGAAGGAAAAGTGAAGTGGCTGGACAATTTCCAAAAATTTAGATATCTACAGGAGATTATAGT  
 GTGGCCACCGCTTTGGGATAGAGATAAAAGTTTTTCATTCCAGAGTGTGAAACACATTTTTAAAGAA  
 CACATGGCAGAAAACATCTTGTCAACAACCAGCAGACACCTTCTCTATGAAGGAAAATTAACCTTTGCAG  
 AAAGCAGGAGATTCTAGATGTTTATCTGTTTCTCTTCAATGATTTCTCTTAGTTACGAAAACCTAAGTG  
 CAACAAAAGAACTTGGAGGCTCAGACCTGGTTAATGTGTCCTTCTTACTCTGAGTTGCAAGCA  
 GTAATAAAAGAGGGTGGTTCTGTGTACAGTACTCGATCAGCCTATCCACTAGATAGATTGGTAGTCAAAA  
 GTATTGAACCACTCCATGTGTGAGTCTTTGGGCTGAGAAATGCTTTTCTTATAACAACAGAAAACAGATA  
 TCGACAGTGTATAGCAGCATTCTTATTACAAGCCAAACGGAAAACATCAAAAAACATGGATGGCACAA  
 ATAACAACTGCAATTTCTGCTTACCAAGAGTCAGGAAACCAAGAAAATATCTTTATTCACATTGCCCG  
 CAGAATCTCTGAAATT

**ACGCGT**ACGCGGCCGCTCGAGCAGAAACTCATCTCAGAAGAGGATCTGGCAGCAAATGATATCCTGGATT  
 ACAAGGATGACGACGATAAGGTTTAA

**Protein Sequence:**

>RC216833 representing NM\_001004330  
 Red=Cloning site Green=Tags(s)

MIFMNTLRYLQTHEYLLDVLWRLFANLEELTQTSLGFVNSLFGIIKDYVDASEISSSLDFISVLTKYFR  
 GSLCQSHQTYCLNYSAAIFYLESRLRQRDDFGIYLKWCEQNEQCRRLHVPELLVAPLQRLTRYPLLLKNIW  
 KRSMDSAEKIMIYSIKEKVEKSIRDLEGVKWLDFQKFRYLQEIIVWPPLWDRDKRFFIPECLKHIFKE  
 HMAENILSPTSRLHLLYEGKLTAESTRFLDVYLFVFNDFLLVTKTKCNKKLGGSDPGLMCPSTPELQA  
 VIKEGGCTVLDQPIPLDRLVVKSIPLHVSFVGLRNAFLIQHENRYRQCIAAFLLQAQTENIKKTWMAQ  
 ITTAISCFTKSQETKKISLFTLPAESSEI

**TRTRPLEQKLISEEDLAANDILDYKDDDDKV**

**Chromatograms:**

[https://cdn.origene.com/chromatograms/mk8018\\_f08.zip](https://cdn.origene.com/chromatograms/mk8018_f08.zip)

**Restriction Sites:**

Sgfl-Mlul

Cloning Scheme:



ACCN: NM\_001004330

ORF Size: 1137 bp

OTI Disclaimer: The molecular sequence of this clone aligns with the gene accession number as a point of reference only. However, individual transcript sequences of the same gene can differ through naturally occurring variations (e.g. polymorphisms), each with its own valid existence. This clone is substantially in agreement with the reference, but a complete review of all prevailing variants is recommended prior to use. [More info](#)

OTI Annotation: This clone was engineered to express the complete ORF with an expression tag. Expression varies depending on the nature of the gene.

Components: The ORF clone is ion-exchange column purified and shipped in a 2D barcoded Matrix tube containing 10ug of transfection-ready, dried plasmid DNA (reconstitute with 100 ul of water).

Reconstitution Method:

1. Centrifuge at 5,000xg for 5min.
2. Carefully open the tube and add 100ul of sterile water to dissolve the DNA.
3. Close the tube and incubate for 10 minutes at room temperature.
4. Briefly vortex the tube and then do a quick spin (less than 5000xg) to concentrate the liquid at the bottom.
5. Store the suspended plasmid at -20°C. The DNA is stable for at least one year from date of shipping when stored at -20°C.

RefSeq: [NM\\_001004330.2](#), [NP\\_001004330.1](#)

RefSeq Size: 3224 bp

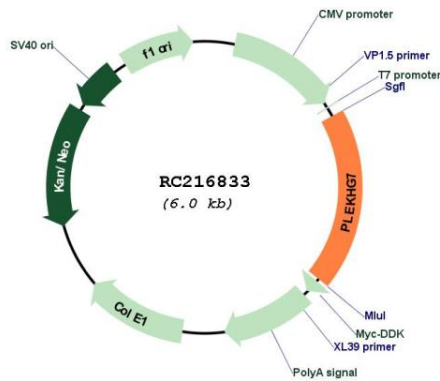
RefSeq ORF: 1140 bp

Locus ID: 440107

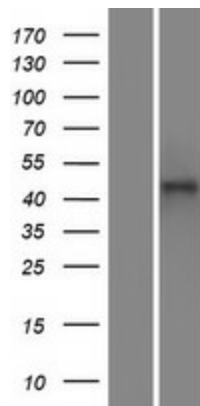
Cytogenetics: 12q22

MW: 44.1 kDa

Product images:



Circular map for RC216833



Western blot validation of overexpression lysate (Cat# [LY423730]) using anti-DDK antibody (Cat# [TA50011-100]). Left: Cell lysates from untransfected HEK293T cells; Right: Cell lysates from HEK293T cells transfected with RC216833 using transfection reagent MegaTran 2.0 (Cat# [TT210002]).