

Product datasheet for **RC216829**

DLK2 (NM_206539) Human Tagged ORF Clone

Product data:

Product Type:	Expression Plasmids
Product Name:	DLK2 (NM_206539) Human Tagged ORF Clone
Tag:	Myc-DDK
Symbol:	DLK2
Synonyms:	DLK-2; EGFL9
Mammalian Cell Selection:	Neomycin
Vector:	pCMV6-Entry (PS100001)
E. coli Selection:	Kanamycin (25 ug/mL)
ORF Nucleotide Sequence:	>RC216829 ORF sequence Red=Cloning site Blue=ORF Green=Tags(s)

TTTTGTAATACGACTCACTATAGGGCGGCCGGAATTCGTCGACTGGATCCGGTACCGAGGAGATCTGCC
GCC**CGATCGCC**

ATGCCAGCGGCTGCCGCTGCCTGCATCTCGTGTGCCTGTTGTGCATTCTGGGGCTCCCGGTCAGCCTG
TCCGAGCCGATGACTGCAGCTCCACTGTGACCTGGCCACGGCTGCTGTGCACCTGACGGCTCCTGCAG
GTGTGACCCGGGCTGGGAGGGGCTGCACCTGTGAGCGCTGTGTGAGGATGCCTGGTGCCAGCACGGTACC
TGCCACCAGCCATGGCAGTGCATCTGCCACAGTGGCTGGCAGGCAAGTCTGTGACAAAGATGAACATA
TCTGTACCACGCAGTCCCCTGCCAGAATGGAGGCCAGTGCATGTATGACGGGGCGGTGAGTACCATTG
TGTGTGCTTACCAGGCTTCCATGGGCGTACTGCGAGCGCAAGGCTGGACCCTGTGAACAGGCAGGCTCC
CCATGCCGCAATGGCGGGCAGTGCCAGGACGACAGGGCTTTGCTCTCAACTTACAGTGGCCTGCTTGG
TGGGCTTTGTGGGTGCCGCTGTGAGGTAATGTGGATGACTGCCTGATGCGGCCTTGTGCTAACGGTGC
CACCTGCCTTGACGGCATAAACCCTTCTCCTGCCTGTCTGAGGGCTTTGCTGGACGCTTCTGCACC
ATCAACCTGGATGACTGTGCCAGCCGCCATGCCAGAGAGGGGCCGCTGTGGGACCGTGTCCAGGACT
TCGACTGCCTCTGCCCCAGTGGCTATGGTGGCAAGACCTGTGAGCTTGTCTTACCTGTCCAGACCCCC
AACCACAGTGGACACCCCTTAGGGCCACCTCAGCTGTAGTGGTACCTGCCACGGGGCCAGCCCCCAC
AGCGCAGGGGCTGGTCTGCTGCGGATCTCAGTGAAGGAGTGGTGGGAGGCAAGAGGCTGGGCTAGGTG
AGCCTAGCTTGGTGGCCCTGGTGGTGTGGGGCCCTCACTGCTGCCCTGGTTCTGGCTACTGTGTTGCT
GACCCGTAGGGCCTGGCCCGGGGTGTCTGCCCCCTGGACCCTGTTGCTACCCTGCCCCACACTATGCT
CCAGCGTGCCAGGACAGGAGTGTGAGTTAGCATGCTGCCAGCAGGGCTCCCCCTGCCACGTGACTTGC
CCCCTGAGCCTGGAAAGACCACAGCACTG

AG**CGGACCG**ACGCGTACGCGGCCGCTCGAGCAGAACTCATCTCAGAAGAGGATCTGGCAGCAAATGATATCC
TGGATTACAAGGATGACGACGATAAGGTTTAA



[View online »](#)

Protein Sequence: >RC216829 protein sequence
Red=Cloning site Green=Tags(s)

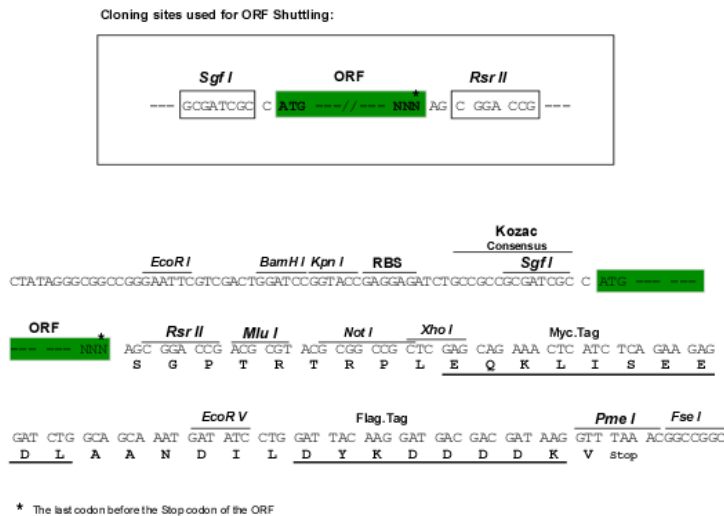
MPSGCRCLHLVCLLCILGAPGQPVRAADCSSHCDLAHGCCAPDGSCRCDPGWEGLHCERCVRMPGCQHGT
 CHQPWQCICHSGWAGKFCDKDEHICTTQSPCQNGGQCMYDGGGEYHCVCLPGFHGRDCERKAGPCEQAGS
 PCRNGGQCQDDQGFALNFTCRCLVGFVGARCEVNVDDCLMRPCANGATCLDGINRF SCLCPEGFAGRFT
 INLDDCASRPCQRGARCRDRVHDFDCLCPSGYGGKTCELVLPVPDPPTTVDTPLGPTSAVVVPATGPAPH
 SAGAGLLRISVKEVYRRQEAGLGEPSLVALVVFALTAALVLATVLLTLRAWRRGVCPGPGCCYPAPHYA
 PACQDQECQVSMLPAGLPLPRDLPEPGKTTAL

SGPTRTRPLEQKLI SEEDLAANDILDYKDDDDKV

Chromatograms: https://cdn.origene.com/chromatograms/mk6620_f09.zip

Restriction Sites: SgfI-RsrII

Cloning Scheme:



ACCN: NM_206539

ORF Size: 1149 bp

OTI Disclaimer: The molecular sequence of this clone aligns with the gene accession number as a point of reference only. However, individual transcript sequences of the same gene can differ through naturally occurring variations (e.g. polymorphisms), each with its own valid existence. This clone is substantially in agreement with the reference, but a complete review of all prevailing variants is recommended prior to use. [More info](#)

OTI Annotation: This clone was engineered to express the complete ORF with an expression tag. Expression varies depending on the nature of the gene.

Components: The ORF clone is ion-exchange column purified and shipped in a 2D barcoded Matrix tube containing 10ug of transfection-ready, dried plasmid DNA (reconstitute with 100 ul of water).

Reconstitution Method:

1. Centrifuge at 5,000xg for 5min.
2. Carefully open the tube and add 100ul of sterile water to dissolve the DNA.
3. Close the tube and incubate for 10 minutes at room temperature.
4. Briefly vortex the tube and then do a quick spin (less than 5000xg) to concentrate the liquid at the bottom.
5. Store the suspended plasmid at -20°C. The DNA is stable for at least one year from date of shipping when stored at -20°C.

RefSeq: [NM_206539.2](#), [NP_996262.1](#)

RefSeq Size: 2053 bp

RefSeq ORF: 1152 bp

Locus ID: 65989

UniProt ID: [Q6UY11](#)

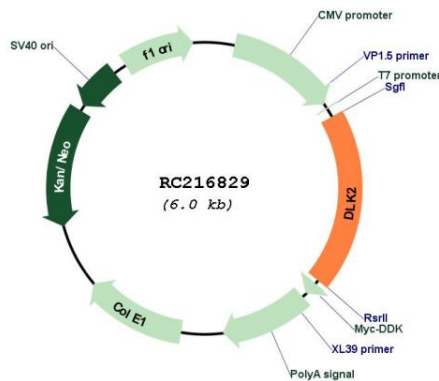
Cytogenetics: 6p21.1

Protein Families: Druggable Genome, Transmembrane

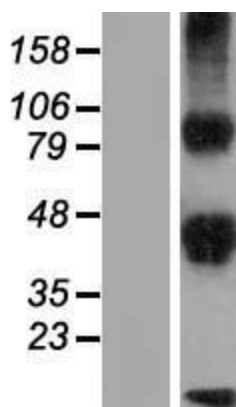
MW: 40.5 kDa

Gene Summary: Regulates adipogenesis.[UniProtKB/Swiss-Prot Function]

Product images:



Circular map for RC216829



Western blot validation of overexpression lysate (Cat# [LY404214]) using anti-DDK antibody (Cat# [TA50011-100]). Left: Cell lysates from untransfected HEK293T cells; Right: Cell lysates from HEK293T cells transfected with RC216829 using transfection reagent MegaTran 2.0 (Cat# [TT210002]).