

## Product datasheet for **RC216821**

### **GALNT13 (NM\_052917) Human Tagged ORF Clone**

#### **Product data:**

Product Type:	Expression Plasmids
Product Name:	GALNT13 (NM_052917) Human Tagged ORF Clone
Tag:	Myc-DDK
Symbol:	GALNT13
Synonyms:	GalNAc-T13
Mammalian Cell Selection:	Neomycin
Vector:	pCMV6-Entry (PS100001)
E. coli Selection:	Kanamycin (25 ug/mL)



[View online »](#)

**ORF Nucleotide Sequence:**

>RC216821 ORF sequence  
 Red=Cloning site Blue=ORF Green=Tags(s)

TTTTGTAATACGACTCACTATAGGGCGGCCGGAATTCGTCGACTGGATCCGGTACCGAGGAGATCTGCC  
 GCC**CGCATCGCC**

ATGAGGAGATTTGTCTACTGCAAGTGTTCTAGCCACTTCGCTGATGTGGTCTTGTGTATGTCTTCT  
 TACTGCTGTACTTCAGTGAATGTAACAAATGTGATGACAAGAAGGAGAGATCTCTGCTGCCTGCATTGAG  
 GGCTGTTATTTCAAGAAACCAAGAGGGCCAGGAGAAATGGGAAAAGCTGTGTTGATTCCTAAAGATGAC  
 CAGGAGAAAATGAAAGAGCTGTTAAAAATCAATCAGTTTAACTTATGGCCAGTGATTTGATTGCCCTTA  
 ATAGAAGTCTGCCAGATGAAGATTAGAAGGATGAAGACAAAAGTCTACCCTGATGAACTTCCAAACAC  
 AAGTGTAGTCATTGTGTTTCATAATGAAGCTTGGAGCACTCTCCTTAGAACTGTTTACAGTGTGATAAAT  
 CGTTCCACACTATCTACTCTCAGAGGTCATCTTGGTAGATGATGCCAGTAAAAGAGATTTTCTCAAGT  
 TGACATTAGAGAATTACGTGAAAAATTTAGAAGTCCAGTAAAAATTTAGGATGGAAGAACGCTCTGG  
 GTTAATACGTGCCGCTTCGAGGAGCAGCTGCTCAAAGGGCAGGTCATAACTTTTCTTGATGCACAC  
 TGTGAATGCACGTTAGGATGGCTGGAGCCTTTCGCTGGCAAGAATAAAGGAAGACAGGAAAACGGTTGTCT  
 GCCCTATCATTGATGTGATTAGTGATGATACTTTTGAATATATGGCTGGGTGAGACATGACTTATGGGGG  
 TTTAACTGAAAAGTGAATTTCCGCTGGTATCCTGTTCCCAAAGAGAAAATGGACAGGAGAAAAGGAGAC  
 AGAACATTACCTGTCAGGACCCCTACTATGGCTGGTGGCCTATTTTCTATTGACAGAAAAGTCTTTGAA  
 AGATAGGAACTTACGATGCAGGAATGGATATCTGGGGTGGAGAGAATCTTGAAATGTCTTTTAGGATTTG  
 GCAATGTGGAGGCTCCTTGGAGATTGTTACTTGTCCCATGTTGGTCATGTTTTTCGGAAGGCAACTCCA  
 TACACTTTTCTGGTGGCACTGGTCAATCAACAAGAACAACAGGAGACTGGCAGAAGTTTGGATGG  
 ATGAATTTAAAGATTTCTTACATCATATCCCAAGTGTGTCAAAGTGGATTATGGAGATGTGTGAGT  
 CAGAAAAACACTAAGAGAAAATCTGAAGTGAAGCCCTTTTCTTGGTACCTAGAAAACATCTATCCGGAC  
 TCCAGATCCCAAGACGTTATTACTCACTTGGTGAAGATAAGAAATGTTGAAACCAATCAGTGTTTAGACA  
 ACATGGGCCGCAAGGAAAATGAAAAGTGGGTATATTCAACTGTCATGGTATGGGAGGAAAATCAGGTATT  
 TTCTTACTGCTGACAAAGAAATCCGAACCGATGACTTGTGCTTGGATGTTTCTAGACTCAATGGACCT  
 GTAATCATGTTAAAATGCCACCATATGAGAGGAAATCAGTTATGGGAATATGATGCTGAGAGACTCACGT  
 TGCGACATGTTAACAGTAACCAATGTCTCGATGAACCTTCTGAAGAAGACAAAATGGTGCCTACAATGCA  
 GGACTGTAGTGAAGCAGATCCCAACAGTGGCTGCTAAGGAACATGACCTTGGGCACA

**ACGCGT**ACGCGGCCGCTCGAGCAGAAACTCATCTCAGAAGAGGATCTGGCAGCAAATGATATCCTGGATT  
 ACAAGGATGACGACGATAAGGTTTAA

**Protein Sequence:**

>RC216821 protein sequence  
 Red=Cloning site Green=Tags(s)

MRRFVYCKVVLATSLMWVLDVFLLLYFSECNKDDKERSLLPALRAVISRNIQEGPGEMGKAVLIPKDD  
 QEKMKELFKINQFNLMASDLIALNRSLPDVRLGCKTKVYPDELNPNTSVVIVFHNEAWSTLLRVTYVSVIN  
 RSPHYLLSEVILVDDASERDFLKLTLNENYVKNLEVPVKIIRMEERSGLIRARLRGAAASKGQVITFLDAH  
 CECTLGWLEPLLARIKEDRKTVCPIIDVTSDDTFEYMGSDMTYGGFNWKLNFRWYVVPQREMDRRKGD  
 RTLPVRTPTMAGGLFSIDRNYFEEIGTYDAGMDIWGGENLEMSFRIWQCGGSLEIVTCSHVGHVFRKATP  
 YTFPGGTGHVINKNRRRLAEVWMDFFKDFYIISPVVVVDYGDVSVRKTLENLCKKPF SWYLENIYPD  
 SQIPRRYSLGEIRNVTNQCLDNMGRKENEKVGIFNCHGMGGNQVF SYTADKEIRTDLCLDVSRLNGP  
 VIMLKCHHMRGNQLWEYDAERLTLRHVNSNQCLDEPSEEDKMVPTMQDCSGSRSQQWLLRNMTLGT

**TR**TRPLEQKLISEEDLAANDILDYKDDDDKV

**Chromatograms:**

[https://cdn.origene.com/chromatograms/mk6448\\_e09.zip](https://cdn.origene.com/chromatograms/mk6448_e09.zip)

**Restriction Sites:**

Sgfl-MluI

**Cloning Scheme:**


**ACCN:** NM\_052917

**ORF Size:** 1668 bp

**OTI Disclaimer:** The molecular sequence of this clone aligns with the gene accession number as a point of reference only. However, individual transcript sequences of the same gene can differ through naturally occurring variations (e.g. polymorphisms), each with its own valid existence. This clone is substantially in agreement with the reference, but a complete review of all prevailing variants is recommended prior to use. [More info](#)

**OTI Annotation:** This clone was engineered to express the complete ORF with an expression tag. Expression varies depending on the nature of the gene.

**Components:** The ORF clone is ion-exchange column purified and shipped in a 2D barcoded Matrix tube containing 10ug of transfection-ready, dried plasmid DNA (reconstitute with 100 ul of water).

- Reconstitution Method:**
1. Centrifuge at 5,000xg for 5min.
  2. Carefully open the tube and add 100ul of sterile water to dissolve the DNA.
  3. Close the tube and incubate for 10 minutes at room temperature.
  4. Briefly vortex the tube and then do a quick spin (less than 5000xg) to concentrate the liquid at the bottom.
  5. Store the suspended plasmid at -20°C. The DNA is stable for at least one year from date of shipping when stored at -20°C.

**RefSeq:** [NM\\_052917.4](#)

**RefSeq Size:** 5689 bp

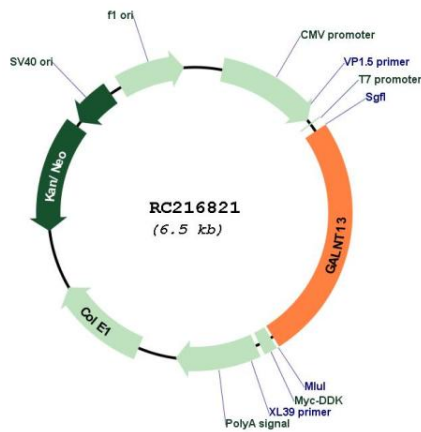
**RefSeq ORF:** 1671 bp

**Locus ID:** 114805

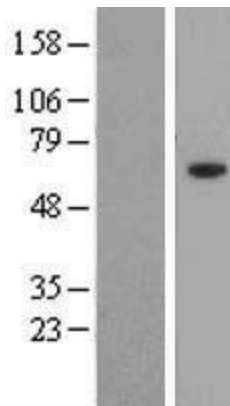
**UniProt ID:** [Q8IUC8](#)

<b>Cytogenetics:</b>	2q23.3-q24.1
<b>Protein Families:</b>	Transmembrane
<b>Protein Pathways:</b>	Metabolic pathways, O-Glycan biosynthesis
<b>MW:</b>	64.1 kDa
<b>Gene Summary:</b>	The GALNT13 protein is a member of the UDP-N-acetyl-alpha-D-galactosamine:polypeptide N-acetylgalactosaminyltransferase (GalNAcT; EC 2.4.1.41) family, which initiate O-linked glycosylation of mucins (see MUC3A, MIM 158371) by the initial transfer of N-acetylgalactosamine (GalNAc) with an alpha-linkage to a serine or threonine residue.[supplied by OMIM, Apr 2004]

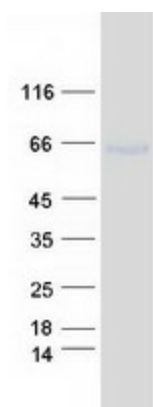
**Product images:**



Circular map for RC216821



Western blot validation of overexpression lysate (Cat# [LY409395]) using anti-DDK antibody (Cat# [TA50011-100]). Left: Cell lysates from untransfected HEK293T cells; Right: Cell lysates from HEK293T cells transfected with RC216821 using transfection reagent MegaTran 2.0 (Cat# [TT210002]).



Coomassie blue staining of purified GALNT13 protein (Cat# [TP316821]). The protein was produced from HEK293T cells transfected with GALNT13 cDNA clone (Cat# RC216821) using MegaTran 2.0 (Cat# [TT210002]).