

Product datasheet for **RC216809**

Annexin VI (ANXA6) (NM_004033) Human Tagged ORF Clone

Product data:

Product Type:	Expression Plasmids
Product Name:	Annexin VI (ANXA6) (NM_004033) Human Tagged ORF Clone
Tag:	Myc-DDK
Symbol:	Annexin VI
Synonyms:	annexin A6; annexin VI; annexin VI (p68); ANX6; calcium-binding protein p68; calelectrin; calphobindin II; CBP68
Mammalian Cell Selection:	Neomycin
Vector:	pCMV6-Entry (PS100001)
E. coli Selection:	Kanamycin (25 ug/mL)



[View online »](#)

ORF Nucleotide Sequence:

>RC216809 representing NM_004033
 Red=Cloning site Blue=ORF Green=Tags(s)

TTTTGTAATACGACTCACTATAGGGCGGCCGGAATTCGTCGACTGGATCCGGTACCGAGGAGATCTGCC
 GCC**CGGATCGCC**

ATGGCCAAACCAGCACAGGGTGCCAAGTACCGGGCTCCATCCATGACTTCCAGGCTTTGACCCCAACC
 AGGATGCCGAGGCTCTGTACACTGCCATGAAGGCTTTGGCAGTGACAAGGAGGCCATACCTGGACATAAT
 CACCTCACGGAGCAACAGGCAGAGGCAGGAGGTCTGCCAGAGCTACAAGTCCCTTACGGCAAGGACCTC
 ATTGCTGATTTAAAGTATGAATTGACGGCAAGTTGAACGGTTGATTGTGGCCTGATGAGGCCACCTG
 CCTATTGTGATGCCAAAGAAATTAAGATGCCATCTCGGGCATTGGCACTGATGAGAAGTGCCTCATTGA
 GATCTTGGCTTCCCGACCAATGAGCAGATGCACCAGCTGGTGGCAGCATACAAAGATGCCTACGAGCGG
 GACCTGGAGGCTGACATCATCGGCACACCTCTGGCCACTCCAGAAGATGCTTGTGGTCTGCTCCAGG
 GAACCAGGGAGGAGGATGACGTAGTGAGCGAGGACCTGGTACAACAGGATGTCCAGGACCTATACGAGGC
 AGGGGAAGTGAATGGGGAACAGATGAAGCCCAGTTTACATCTTGGGAAATCGCAGCAAGCAGCAT
 CTTCCGTTGGTGTTCGATGAGTATCTGAAGACCACAGGGAAGCCGATTGAAGCCAGCATCCGAGGGGAGC
 TGCTGGGGACTTTGAGAAGCTAATGCTGGCCGTAGTGAAGTGTATCCGGAGCACCCCGGAATTTTGC
 TGAAAGGCTCTTCAAGGCTATGAAGGCCCTGGGGACTCGGGACAACACCTGATCCGCATCATGGTCTCC
 CGTAGTGAGTTGGACATGCTCGACATTCGGGAGATCTTCCGGACCAAGTATGAGAAGTCCCTCTACAGCA
 TGATCAAGAAATGACACCTCTGGCGAGTACAAGAAGACTCTGCTGAAGCTGTCTGGGGGAGATGATGATGC
 TGCTGGCCAGTTCTTCCCGAGGCAGCGCAGGTGGCCTATCAGATGTGGGAAGTGTGAGTGCAGTGGCCGA
 GTAGAGCTGAAGGGAAGTGTGCGCCAGCCAATGACTTCAACCTGACGCAGATGCCAAAGCGCTGCGGA
 AAGCCATGAAGGGACTCGGGACTGACGAAGACACAATCATCGATATCATCAGCACCGCAGCAATGTCCA
 GCGGCAGCAGATCCGGCAGACCTTCAAGTCTCACTTTGGCCGGGACTTAATGACTGACCTGAAGTCTGAG
 ATCTCTGGAGACCTGGCAAGGCTGATTCTGGGGCTCATGATGCCACCGGCCATTACGATGCCAAGCAGT
 TGAAGAAGGCCATGGAGGGAGCCGGCACAGATGAAAAGGCTCTTATTGAAATCCTGGCCACTCGGACCAA
 TGCTGAAATCCGGGCCATCAATGAGGCCTATAAGGAGGACTATCACAAAGTCCCTGGAGGATGCTCTGAGC
 TCAGACACATCTGGCCACTTCAGGAGGATCCTCATTTCTCTGGCCACGGGGCATCGTGAGGAGGGAGGAG
 AAAACCTGGACCAGGCACGGGAAGTGCCAGGAAATAGCAGACACACCTAGTGGAGACAAAACCTCCTT
 GGAGACACGTTTCATGACGATCCTGTGTACCCGGAGCTATCCGCACCTCCGGAGAGTCTTCCAGGAGTTC
 ATCAAGATGACCAACTATGACGTGGAGCACACCATCAAGAAGGAGATGTCTGGGGATGTCAGGGATGCAT
 TTGTGGCCATTGTTCAAAGTGTCAAGAACAAGCCTCTCTTTGCCGACAACTTTACAAATCCATGAA
 GGGTGCTGGCACAGATGAGAAGACTCTGACCAGGATCATGGTATCCCGCAGTGAGATTGACCTGCTCAAC
 ATCCGGAGGGAATTCATTGAGAAATATGACAAGTCTCTCCACCAAGCCATTGAGGGTGACACCTCCGGAG
 ACTTCTGAAGGCCTTGCTGGCTCTCTGTGGTGGTGAGGAC

ACGCGTACGCGGGCCGCTCGAGCAGAAACTCATCTCAGAAGAGGATCTGGCAGCAATGATATCCTGGATT
 ACAAGGATGACGACGATAAGGTTTAA

Protein Sequence: >RC216809 representing NM_004033
 Red=Cloning site Green=Tags(s)

MAKPAQGAKYRGSIHDFPGFDPNQDAEALYTAMKGFSGDKEAILDIIITSRSNRQRQEVQCQSYKSLYGKDL
 IADLKYELTGKFERLIVGLMRPPAYCDAKEIKDAISGIGTDEKCLIEILASRTNEQMHQLVAAYKDAYER
 DLEADIIGDTSGHFQKMLVLLQGTREEDDVVSEDLVQQDVQDLYEAGELKWGTEAQFIYILGNRSKQH
 LRLVFDEYLKTTGKPIEASIRGELSGDFEKLMLAVVKCIRSTPEYFAERLFKAMKGLGTRDNTLIRIMVS
 RSELDMLDIREIFRTKYEKSLYSMIKNDTSGEYKTKLLKLSGGDDAAGQFFPEAAQVAYQMWELSAVAR
 VELKGTVRPANDFPDADAKALRKAMKGLGTDDETDIIDIITHRSNVQRQQIRQTFKSHFGRDLMTDLKSE
 ISGDLARLILGLMPPAHYDAKQLKKAMEGAGTDEKALIEILATRTNAEIRAINAYKEDYHKSLEDALS
 SDTSGHFRRILISLATGHREEGGENLDQAREDAQEADTPSGDKTSLETRFMTILCTRSYPHLRRVQEF
 IKMTNYDVEHTIKKEMSGDVRDAFVAIVQSVKNKPLFFADKLYKSMKGAGTDEKTLTRIMVSRSEIDLLN
 IRREFIEKYDKSLHQAIEGDTSGDFLKALLALCGGED

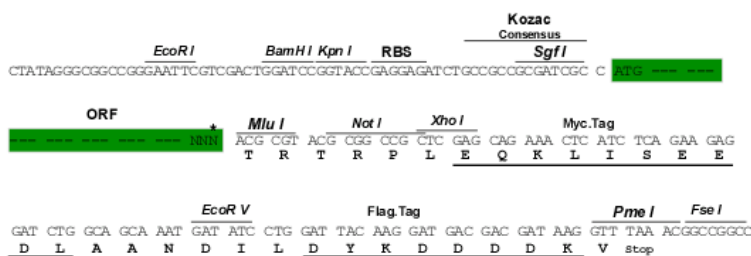
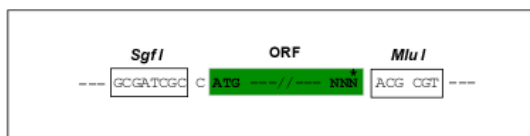
TRTRPLEQKLISEEDLAANDILDYKDDDDKV

Chromatograms: https://cdn.origene.com/chromatograms/mk6475_c06.zip

Restriction Sites: SgfI-MluI

Cloning Scheme:

Cloning sites used for ORF Shuttling:



* The last codon before the Stop codon of the ORF

ACCN: NM_004033

ORF Size: 2001 bp

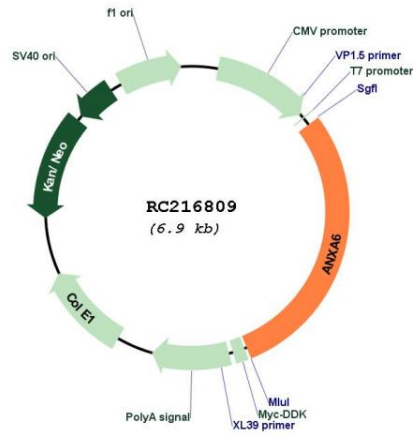
OTI Disclaimer: The molecular sequence of this clone aligns with the gene accession number as a point of reference only. However, individual transcript sequences of the same gene can differ through naturally occurring variations (e.g. polymorphisms), each with its own valid existence. This clone is substantially in agreement with the reference, but a complete review of all prevailing variants is recommended prior to use. [More info](#)

OTI Annotation: This clone was engineered to express the complete ORF with an expression tag. Expression varies depending on the nature of the gene.

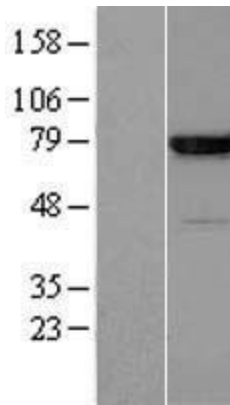
Components: The ORF clone is ion-exchange column purified and shipped in a 2D barcoded Matrix tube containing 10ug of transfection-ready, dried plasmid DNA (reconstitute with 100 ul of water).

Reconstitution Method:	<ol style="list-style-type: none">1. Centrifuge at 5,000xg for 5min.2. Carefully open the tube and add 100ul of sterile water to dissolve the DNA.3. Close the tube and incubate for 10 minutes at room temperature.4. Briefly vortex the tube and then do a quick spin (less than 5000xg) to concentrate the liquid at the bottom.5. Store the suspended plasmid at -20°C. The DNA is stable for at least one year from date of shipping when stored at -20°C.
Note:	Plasmids are not sterile. For experiments where strict sterility is required, filtration with 0.22um filter is required.
RefSeq:	NM_004033.2 , NP_004024.2
RefSeq Size:	2897 bp
RefSeq ORF:	2003 bp
Locus ID:	309
Cytogenetics:	5q33.1
Domains:	annexin
MW:	75.1 kDa
Gene Summary:	<p>Annexin VI belongs to a family of calcium-dependent membrane and phospholipid binding proteins. Several members of the annexin family have been implicated in membrane-related events along exocytotic and endocytotic pathways. The annexin VI gene is approximately 60 kbp long and contains 26 exons. It encodes a protein of about 68 kDa that consists of eight 68-amino acid repeats separated by linking sequences of variable lengths. It is highly similar to human annexins I and II sequences, each of which contain four such repeats. Annexin VI has been implicated in mediating the endosome aggregation and vesicle fusion in secreting epithelia during exocytosis. Alternatively spliced transcript variants have been described. [provided by RefSeq, Aug 2010]</p>

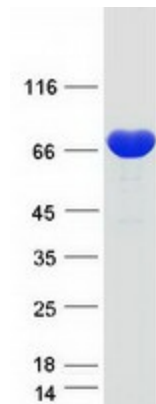
Product images:



Circular map for RC216809



Western blot validation of overexpression lysate (Cat# [LY418290]) using anti-DDK antibody (Cat# [TA50011-100]). Left: Cell lysates from untransfected HEK293T cells; Right: Cell lysates from HEK293T cells transfected with RC216809 using transfection reagent MegaTran 2.0 (Cat# [TT210002]).



Coomassie blue staining of purified ANXA6 protein (Cat# [TP316809]). The protein was produced from HEK293T cells transfected with ANXA6 cDNA clone (Cat# RC216809) using MegaTran 2.0 (Cat# [TT210002]).