

Product datasheet for RC216808

Cytohesin 1 (CYTH1) (NM_004762) Human Tagged ORF Clone

Product data:

Product Type:	Expression Plasmids
Product Name:	Cytohesin 1 (CYTH1) (NM_004762) Human Tagged ORF Clone
Tag:	Myc-DDK
Symbol:	Cytohesin 1
Synonyms:	B2-1; CYTOHESIN-1; D17S811E; PSCD1; SEC7
Mammalian Cell Selection:	Neomycin
Vector:	pCMV6-Entry (PS100001)
E. coli Selection:	Kanamycin (25 ug/mL)
ORF Nucleotide Sequence:	>RC216808 ORF sequence Red=Cloning site Blue=ORF Green=Tags(s)

TTTTGTAATACGACTCACTATAGGGCGGCCGGAATTCGTCGACTGGATCCGGTACCGAGGAGATCTGCC
GCCCGGATCGCC

ATGGAGGAGGACGACAGCTACGTTCCAGTGACCTGACAGCAGAGGAGCGTCAAGAACTGGAGAACATCC
GACGGAGAAAACAGGAGCTGCTGGCTGACATTCAGAGGCTGAAGGATGAGATAGCAGAAGTAGCTAATGA
AATTGAAAACCTGGGATCCACAGAGGAAAGGAAAAACATGCAGAGGAACAACAGGTAGCCATGGGCAGG
AAAAAATTAATATGGACCCTAAAAAGGGGATCCAGTTCTTAATAGAGAACGACCTCCTGAAGAACACTT
GTGAAGACATTGCCAGTCTTATATAAAGCGAAGGGCTCAACAAGACAGCCATCGGCGACTACCTAGG
GGAGAGAGATGAGTTAATATCCAGTTCATGATTTGTGGAGCTGCATGAGTTCAGTATCTTAAT
CTCGTCCAGGCACTACGGCAGTTCCTGTGGAGCTCCGGCTACCCGGAGAGGCCAGAAAGATCGACCCGA
TGATGGAGGCGTTTGCCAGCGATATTGTGAGTCAATAATGGCGTGTCCAGTCCACGGATACTTGTTA
CGTCTCTCCTTTGCCATCATCATGTTGAACACCAGTCTGCACAACCCCAATGTCAAAGATAAGCCCACT
GTGGAGAGGTTTATTGCCATGAACCGAGGCATCAATGATGGGGGAGACCTGCCGGAGGAGCTCCTCCGGA
ATCTCTATGAGAGCATAAAAAATGAACCCTTTAAATCCCAGAAGACGACGGGAATGACCTCACTCACAC
TTTCTTCAATCCAGACCGAGAAGGCTGGCTATTGAAACTCGGAGGTGGCAGGGTAAAGACTTGAAGAGA
CGCTGGTTCATTCTGACTGACAACCTTTACTACTTTGAGTATACCACGGATAAAGGAGCCCGTGGAA
TCATCCCTTTAGAGAATCTGAGTATCCGGGAAGTGGAGGACTCCAAAAACCAAACCTGCTTTGAGCTTTA
TATCCCGGACAATAAAGACCAAGTTATCAAGGCCTGCAAGACCGAGGCTGACGGGCGGGTGGTGGAGGGG
AACCACACTGTTTACCGATCTCAGCTCCGACGCCGAGGAGAAGGAGGAGTGGATTAAGTGCATTAAGG
CAGCCATCAGCAGGGACCCTTTTACGAAATGCTCGCAGCACGAAAAAGAAGGTCTCCTCCACGAAGCG
ACAC

ACGGCTACGGCGCCGCTCGAGCAGAAACTCATCTCAGAAGAGGATCTGGCAGCAATGATATCCTGGATT
ACAAGGATGACGACGATAAGGTTTAA



[View online >](#)

Protein Sequence: >RC216808 protein sequence
Red=Cloning site Green=Tags(s)

MEEDDSYVPSDLTAEERQELNIRRRKQELLADIQRLKDEIAEVANEIENLGSTEERKNMQRNKQVAMGR
 KKFNMDPKKGIQFLIENDLLKNTCEDIAQFLYKGEGLNKTAIGDYLGERDEFNIQVLHAFVELHEFTDLN
 LVQALRQFLWSFRLPGEAQKIDRMMEAFQRYCQCNNGVFQSTDTCYVLSFAIIMLNTSLHNPVVKDKPT
 VERFIAMNRGINDGGDLPEELLRNLYESIKNEPFKIPEDDGNLTHTFNPDREGWLLKLGGRVKTWKR
 RWFILTDNCLYFYEYTTDKPEPRGIIPLENLSIREVEDSKKPNCFELYIPDNKDQVIKACKTEADGRVVEG
 NHTVYRISAPTPEEKEEWIKCIKAAISRDPFYEMLAARKKKVSSTKRH

TRTRPLEQKLISEEDLAANDILDYKDDDDKV

Chromatograms: https://cdn.origene.com/chromatograms/mk6599_d09.zip

Restriction Sites: SgfI-MluI

Cloning Scheme:



ACCN: NM_004762

ORF Size: 1194 bp

OTI Disclaimer: The molecular sequence of this clone aligns with the gene accession number as a point of reference only. However, individual transcript sequences of the same gene can differ through naturally occurring variations (e.g. polymorphisms), each with its own valid existence. This clone is substantially in agreement with the reference, but a complete review of all prevailing variants is recommended prior to use. [More info](#)

OTI Annotation: This clone was engineered to express the complete ORF with an expression tag. Expression varies depending on the nature of the gene.

Components: The ORF clone is ion-exchange column purified and shipped in a 2D barcoded Matrix tube containing 10ug of transfection-ready, dried plasmid DNA (reconstitute with 100 ul of water).

Reconstitution Method:

1. Centrifuge at 5,000xg for 5min.
2. Carefully open the tube and add 100ul of sterile water to dissolve the DNA.
3. Close the tube and incubate for 10 minutes at room temperature.
4. Briefly vortex the tube and then do a quick spin (less than 5000xg) to concentrate the liquid at the bottom.
5. Store the suspended plasmid at -20°C. The DNA is stable for at least one year from date of shipping when stored at -20°C.

RefSeq: [NM_004762.3](#)

RefSeq Size: 3366 bp

RefSeq ORF: 1197 bp

Locus ID: 9267

UniProt ID: [Q15438](#)

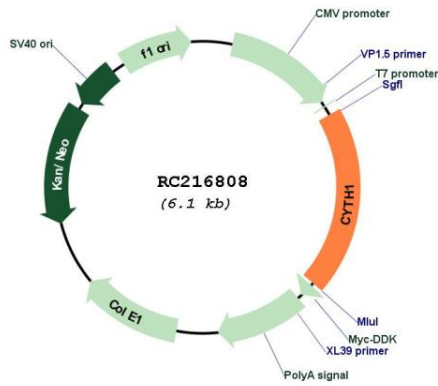
Cytogenetics: 17q25.3

Domains: Sec7, PH

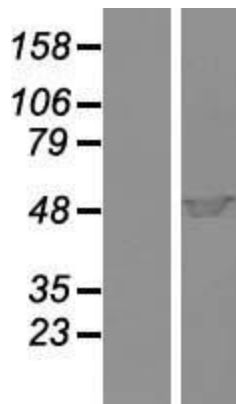
MW: 46.4 kDa

Gene Summary: The protein encoded by this gene is a member of the PSCD family. Members of this family have identical structural organization that consists of an N-terminal coiled-coil motif, a central Sec7 domain, and a C-terminal pleckstrin homology (PH) domain. The coiled-coil motif is involved in homodimerization, the Sec7 domain contains guanine-nucleotide exchange protein activity, and the PH domain interacts with phospholipids and is responsible for association of PSCDs with membranes. Members of this family appear to mediate the regulation of protein sorting and membrane trafficking. This gene is highly expressed in natural killer and peripheral T cells, and regulates the adhesiveness of integrins at the plasma membrane of lymphocytes. A pseudogene of this gene has been defined on the X chromosome. Alternative splicing results in multiple transcript variants. [provided by RefSeq, May 2014]

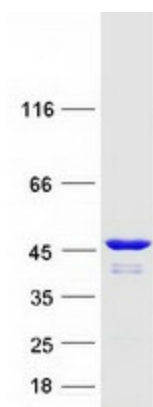
Product images:



Circular map for RC216808



Western blot validation of overexpression lysate (Cat# [LY417775]) using anti-DDK antibody (Cat# [TA50011-100]). Left: Cell lysates from untransfected HEK293T cells; Right: Cell lysates from HEK293T cells transfected with RC216808 using transfection reagent MegaTran 2.0 (Cat# [TT210002]).



Coomassie blue staining of purified CYTH1 protein (Cat# [TP316808]). The protein was produced from HEK293T cells transfected with CYTH1 cDNA clone (Cat# RC216808) using MegaTran 2.0 (Cat# [TT210002]).