

Product datasheet for RC216807

Gemin 2 (GEMIN2) (NM_001009183) Human Tagged ORF Clone

Product data:

Product Type:	Expression Plasmids
Product Name:	Gemin 2 (GEMIN2) (NM_001009183) Human Tagged ORF Clone
Tag:	Myc-DDK
Symbol:	Gemin 2
Synonyms:	SIP1; SIP1-delta
Mammalian Cell Selection:	Neomycin
Vector:	pCMV6-Entry (PS100001)
E. coli Selection:	Kanamycin (25 ug/mL)
ORF Nucleotide Sequence:	>RC216807 representing NM_001009183 Red=Cloning site Blue=ORF Green=Tags(s)

TTTTGTAATACGACTCACTATAGGGCGGCCGGAATTCGTCGACTGGATCCGGTACCGAGGAGATCTGCC
GCC**CGATCGCC**

ATGCGCCGAGCGGAACTGGCTGGTTTAAAACCATGGCGTGGTACCAGCGGAGTCCGCAGTGAAGAGT
TGATGCCCTCGGCTATTGCCGGTAGAGCCTTGCAGCTTGACGGAAGGTTTCGATCCCTCGGTACCCCGAG
GACGCCTCAGGAATACCTGAGGCGGGTCCAGATCGAAGCAGCTCAATGTCCAGATGTTGTGGTAGCTCAA
ATTGACCCAAAGAAGTTGAAAAGGAAGCAAAGTGTGAATATTTCTTTTCAGGATGCCAACCCGCCCTG
AAGTTATCCCAACACTTCAATGGCAACAGCAACAAGTGGCACAGTTTCAACTGTTTCGACAGAATGT
GAACAAACATAGAAGTCACTGGAAATCACAAACAGTTGGATAGTAATGTGACAATGCCAAAATCTGAAGT
GAAGAAGGCTGGAAGAAATTTGTCTGGGTGAAAAGTTATGTGCTGACGGGGCTGTTGGACCAGCCACAA
ATGAAAGTCTGGAATAGATTATGTACAAATGGTTTTCTCCCTTGCTTAGTATTGTTAGCAGAATGAA
TCAGGCAACAGTAACTAGTGTCTTGAATATCTGAGTAATTGGTTTGGAGAAAGAGACTTACTCCAGAA
TTGGGAAGATGGCTTTATGCTTTATTGGCTTGTCTTAAAAGCCTTTGTTACCTGAGGCTCATTCACTGA
TTCGGCAGCTTGAAGAAGGTGCTCTGAAGTGAGGCTCTTAGTGGTATTT

ACGCGTACGCGGCCGCTCGAGCAGAACTCATCTCAGAAGAGGATCTGGCAGCAAATGATATCTGGATT
ACAAGGATGACGACGATAAGGTTTAA



[View online »](#)

Reconstitution Method:

1. Centrifuge at 5,000xg for 5min.
2. Carefully open the tube and add 100ul of sterile water to dissolve the DNA.
3. Close the tube and incubate for 10 minutes at room temperature.
4. Briefly vortex the tube and then do a quick spin (less than 5000xg) to concentrate the liquid at the bottom.
5. Store the suspended plasmid at -20°C. The DNA is stable for at least one year from date of shipping when stored at -20°C.

RefSeq: [NM_001009183.1](#), [NP_001009183.1](#)

RefSeq Size: 1309 bp

RefSeq ORF: 720 bp

Locus ID: 8487

UniProt ID: [O14893](#)

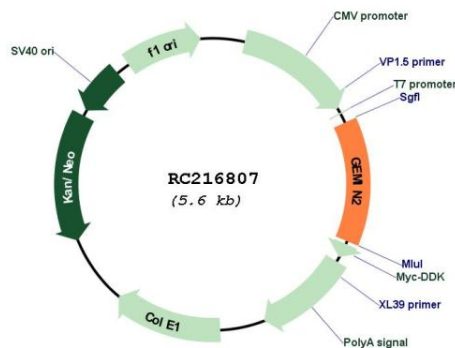
Cytogenetics: 14q21.1

Protein Families: Druggable Genome, Stem cell - Pluripotency

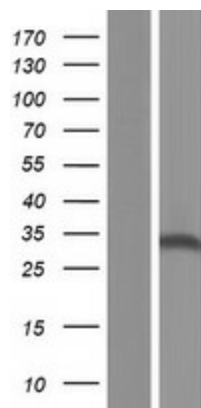
MW: 28 kDa

Gene Summary: This gene encodes one of the proteins found in the SMN complex, which consists of several gemin proteins and the protein known as the survival of motor neuron protein. The SMN complex is localized to a subnuclear compartment called gems (gemini of coiled bodies) and is required for assembly of spliceosomal snRNPs and for pre-mRNA splicing. This protein interacts directly with the survival of motor neuron protein and it is required for formation of the SMN complex. A knockout mouse targeting the mouse homolog of this gene exhibited disrupted snRNP assembly and motor neuron degeneration. [provided by RefSeq, Aug 2011]

Product images:



Circular map for RC216807



Western blot validation of overexpression lysate (Cat# [LY422905]) using anti-DDK antibody (Cat# [TA50011-100]). Left: Cell lysates from untransfected HEK293T cells; Right: Cell lysates from HEK293T cells transfected with RC216807 using transfection reagent MegaTran 2.0 (Cat# [TT210002]).