

## Product datasheet for RC216806

### NEMF (NM\_004713) Human Tagged ORF Clone

#### Product data:

Product Type:	Expression Plasmids
Product Name:	NEMF (NM_004713) Human Tagged ORF Clone
Tag:	Myc-DDK
Symbol:	NEMF
Synonyms:	IDDSAPN; NY-CO-1; SDCCAG1
Mammalian Cell Selection:	Neomycin
Vector:	pCMV6-Entry (PS100001)
E. coli Selection:	Kanamycin (25 ug/mL)
ORF Nucleotide Sequence:	>RC216806 representing NM_004713 Red=Cloning site Blue=ORF Green=Tags(s)

TTTTGTAATACGACTCACTATAGGGCGGCCGGAATTCGTCGACTGGATCCGGTACCGAGGAGATCTGCC  
GCC**CGATCGC**C

ATGAAGAGCCGCTTTAGCACCATTGACCTCCGCGCCGTAATGCTAGCTTGTAGGAA  
TGAGAGTAAACAATGTTTATGATGTGGATAATAAGACATACCTTATTCGCTTCAAAAACCGGACTTTAA  
AGCTACACTTTTACTTGAATCTGGCATAACGAATTCATACAACAGAATTTGAGTGGCCTAAGAATATGATG  
CCGTCTAGTTTTGCCATGAAGTCCGAAAACATTTGAAGAGTCGGAGATTAGTCAGTGCAAAACAGCTTG  
GTGTGGATAGAATTGTAGATTTTCAATTTGGAAGTGATGAAGCTGCTTACCATTTAATCATTGAGCTCTA  
TGATAGGGGAACATTGTTCTTACAGATTATGAGTACGTAAATTTAAATATTCTAAGGTTTCGAAGCTGAT  
GAGGCAGATGATGTTAAATTTGCTGTTCTGTAACGCTATCCACTTGATCATGCTAGAGCTGCTGAACCTT  
TGCTTACTTTGGAAAGTTGACTGAAATAGTAGCCAGCGCACCTAAGGGTGAAGTACTGAAGAGGGTGTCT  
TAACCCATTACTTCCCTATGGACCAGCTCTCATTGAACACTGTCTTTAGAAAAATGGATTCTCGGGTAAT  
GTCAAAGTGGATGAAAACTTGAAGTAAAGATATTGAAAAAGTACTTGTCTCTGCAGAAAGCAGAAG  
ACTATATGAAAACAACATCCAATTCAGTGGGAAGGGATATATCATTAGAAAAGAGAAAATAAACCATG  
CTTGAAGCAGATAAACCAAGTGAAGACATACTGACGTATGAGGAATTTTCATCTTTCTGTTTTCTCAA  
CATTCACAATGTCCATATATAGAATTTGAATCATTGACAAGGCGGTGGATGAATTTTATTCCAAGATAG  
AAGGCCAGAAAATGACTTAAAAGCTTTACAACAGGAAAAGCAAGCATTGAAGAAATTAGATAATGTTCCG  
AAAGGATCACGAAAACAGATTGGAAGCTTTCAGCAGGCTCAGGAAATAGACAAACTGAAAGGAGAGCTC  
ATAGAAATGAACCTACAAATAGTTGACAGAGCCATTGAGGTAGTTCGAAGTGTCTTAGCTAACAGATAG  
ATTGGACAGAAAATGGGTAAATTTGTAAGAAAGCCAGGCTCAAGGAGACCCTGTTGCAAGTGAATCAA  
AGAATTAACACTACAAACAACCATGTTACAATGCTGCTAAGAAATCCATACTTGTATCAGAGGAGGAA  
GATGATGATGTTGATGGTACGTCAATGTTGAGAAAAATGAAACTGAACCACCAAAAGGAAAAAAGAAAA  
AACAAAAGAATAAACAGCTGCAGAAGCCTCAGAAAAATAAGCCCTTACTTGTAGATGTTGATCTCAGCTT  
GTCAGCATATGCCAATGCCAAAAAGTATTATGATCACAAGAGATATGCTGCTAAGAAAACACAAAAGACT



GTTGAAGCTGCTGAGAAGGCATTCAAGTCAGCAGAAAAGAAAACAAAGCAAACATTAAAAGAAGTTCAGA  
 CTGTTACCTCTATTCAAAAAGCAAGAAAAGTATATTGGTTTGAGAAATTTCTGTGGTTCATTAGCTCAGA  
 GAACTATCTAATTATAGGTGGACGAGATCAGCAACAGAATGAAATAATTGTGAAAAGATACTTGACACCA  
 GGAGACATTTATGTACATGCTGATCTTCATGGAGCTACTAGCTGTGTAATTAAGAATCCAACAGGAGAAC  
 CCATCCCCCACGGACCTTGACTGAAGCTGGCACAATGGCACTTTGCTACAGTGTGCTTGGGATGCACG  
 AGTTATCACTAGTGTGGTGGGTGTACCATCATCAGGTATCTAAAACAGCACCACCTGGAGAATATTTG  
 ACAACAGGAAGCTTCATGATAAGAGGAAAAAAGAAATTTTCTCCCTCATATCAATGATGGGGTTTA  
 GCTTCCTTTTTAAGGTAGATGAGTCTTGTGTTTGGAGACATCAGGGTGAACGAAAAGTCAGAGTACAGGA  
 TGAAGACATGGAGACACTGGCAAGTTGTACAAGTGAACCTCATATCAGAAGAAATGGAACAATTAGATGGA  
 GGTGACACGAGCAGTGATGAGGATAAAGAAGAACATGAACTCCTGTGGAAGTAGAACTCATGACTCAGG  
 TTGACCAAGAGGATATCACTCTTCAGAGTGGCAGAGATGAACTAAATGAGGAGCTCATTGAGGAAGAAAG  
 CTCTGAAGACGAAGGAGAATATGAAGAGGTTAGAAAAGATCAGGATTCTGTTGGTGAATGAAGGATGAA  
 GGGGAAGAGACATTAATATCCTGATACTACCATTGACTTGCTCACCTCAACCCCAAAGGTCCATCC  
 AGAAATTTGGCTTCAAAGAGGAATCTTCTAATTCTAGTGACAGTAAATCACAGAGCCGGAGACATTTGTC  
 AGCCAAGGAAAGAAGGAAATGAAAAGAAAAAATCTCAAGTGACTCAGGAGATTTAGAAGCGTTAGAG  
 GGAAAGGATAAAGAAAAAGAAAGTACTGTACACATTGAAACTCATCAGAACACAAGCAAAAATGTTGCGG  
 CTGTGCAGCCAATGAAACGAGGACAAAAGAGTAAATGAAAAAATGAAAGAAAAATACAAAAGACCAGGA  
 TGAAGAAGACCGTGAACCTATCATGAAGTTGCTGGGGTCTGCAGGTTCAAACAAAGAAAGAAAAAGGGAAG  
 AAGGGGAAGAAAGGAAAAACAAAGGACGAACCTGTGAAGAAACAGCCCCAGAAACCTAGAGGTGGACAGA  
 GGGTCTCTGACAACATTAAGAAAGAACTCCGTTCTTGGAGTTAATACTCATGAGTTACAAGACTTTGC  
 TGATAGATCCACATGATGACAAGGAAGCAAGATCTGGATCAACAGGGAATGAGGAAAACTATTT  
 GATTCTTTGACAGGCCAGCCACATCTGAAGATGTACTACTGTTGCCATTCCAATATGTGCCCTTACA  
 CCACATGACAACTACAATATAAAGTAAACTTACTCCTGGAGTGCAGAAAAAGGGAAGAAAGCTGACAAA  
 AACAGCCTTGAATAGTTTATGCATTCCAAAAGCAACAGCAAGAGAAAAAGACTTATTCGCGAGCGTA  
 AAGGACACAGATTTATCAAGAAACATTCCTGGCAAAGTGAAGTGTCTGCACCAATCTTCTGAACGTAA  
 AAAGAAA

ACGCGTACGCGGCCGCTCGAGCAGAACTCATCTCAGAAGAGGATCTGGCAGCAAATGATATCCTGGATT  
 ACAAGGATGACGACGATAAGGTTTAA

**Protein Sequence:**

>RC216806 representing NM\_004713  
 Red=Cloning site Green=Tags(s)

MKSRFSTIDLRAVLAELNASLLGMRVNNVYDNDNKTYLIRLQKPDFKATLLLESGIRIHTTEFEWPKNMM  
 PSSFAMKCRKHLKSRRLVSAKQLGVDRIVDFQFGSDEAAYHLIELYDRGNIVLTDYEVYILNLRFRD  
 EADDVKFAVRERYPLDHARAAEPLTLERLTEIVASAPKGELLKRVLNPLLPYGPALIEHCLLENGFSGN  
 VKVDEKLETKDIEKVLVSLQKAEDYMKTTSNFSGKGYIIQKREIKPCLEADKPVEDILTYEEFHPFLFSQ  
 HSQCPYIEFESFDKAVDEFYSKIEGQKIDLKALQEQKQALKKLDNVRKDHENRLEALQQAQEIIDLKLGEL  
 IEMNLQIVDRAIQVRSALANQIDWTEIGLIVKEAQAQGDVVASAIKELKLQTNHVMTLLRNPYLLSEEE  
 DDDVDGDVNVKNETEPPKGGKKKQKNKQLQKPKNKPLLVVDVLSL SAYANAKKYDCHKRYAAKKTQKT  
 VEAAEKAFKSAEKKTKQTLKEVQTVTSIQKARKVYWFELWFISSENYLIIGGRDQQQNEIIVKRYLTP  
 GDIYVHADLHGATSCVIKNPTGEPPIPPRTLTEAGTMALCYSAAWDARVITSAWWVYHHQVSKTAPTGEYL  
 TTGFSMIRGKKNFLPPSYLMMGFSLFKVDESCVWRHQGERKVRVQDEDMETLASCTSELISEEMEQLDG  
 GDTSSDEDKEEHEPVEVELMTQVDQEDITLQSGRDELNEELIQEESSEDEGEYEEVRKDQDSVGMKDE  
 GEETLNYPDTTIDL.SHLQPORSIQKLASKEESSNSSDSKSQSRRHL.SAKERREMKKKLPSDSGDLEALE  
 GKDKKEESTVHIETHQNTSKNVAAVQPMKRGQKSKMKMKMEKYKDQDEEDRELIMKLLGSAGSNKEEKGK  
 KGGKGTKDEPVKKQPQKPRGGQVRSDNIKKETPFLEVI THELQDFAVDDPHDDKKEQDLDDQQGNEENLF  
 DSLTGQPHPEDVLLFAIPICAPYTTMTNYKYKVLTPGVQKKGAAKTALNSFMHSKEATAREKDLFRSV  
 KDTDL.SRNIPGVKVSAPNLLNVKRK

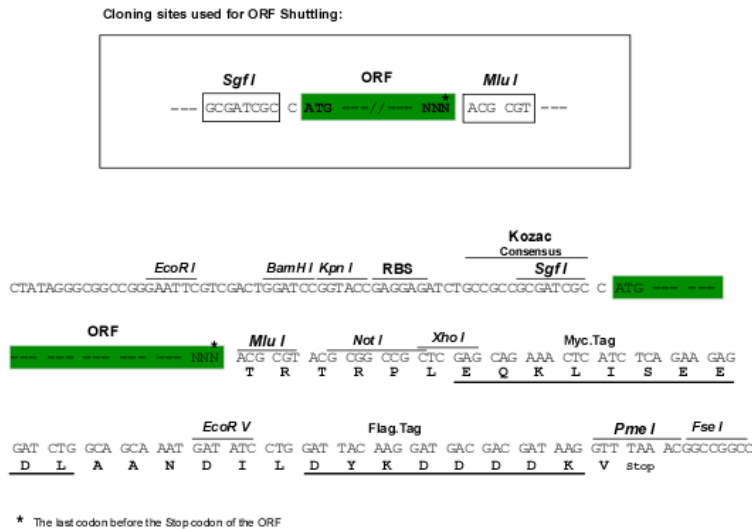
TRTRPLEQKLI SEEDLAANDILDYKDDDDKV

**Chromatograms:**

[https://cdn.origene.com/chromatograms/mk8018\\_f02.zip](https://cdn.origene.com/chromatograms/mk8018_f02.zip)

**Restriction Sites:** SgfI-MluI

**Cloning Scheme:**



**ACCN:** NM\_004713

**ORF Size:** 3228 bp

**OTI Disclaimer:** The molecular sequence of this clone aligns with the gene accession number as a point of reference only. However, individual transcript sequences of the same gene can differ through naturally occurring variations (e.g. polymorphisms), each with its own valid existence. This clone is substantially in agreement with the reference, but a complete review of all prevailing variants is recommended prior to use. [More info](#)

**OTI Annotation:** This clone was engineered to express the complete ORF with an expression tag. Expression varies depending on the nature of the gene.

**Components:** The ORF clone is ion-exchange column purified and shipped in a 2D barcoded Matrix tube containing 10ug of transfection-ready, dried plasmid DNA (reconstitute with 100 ul of water).

**Reconstitution Method:**

1. Centrifuge at 5,000xg for 5min.
2. Carefully open the tube and add 100ul of sterile water to dissolve the DNA.
3. Close the tube and incubate for 10 minutes at room temperature.
4. Briefly vortex the tube and then do a quick spin (less than 5000xg) to concentrate the liquid at the bottom.
5. Store the suspended plasmid at -20°C. The DNA is stable for at least one year from date of shipping when stored at -20°C.

**RefSeq:** [NM\\_004713.5](#), [NP\\_004704.2](#)

**RefSeq Size:** 4136 bp

**RefSeq ORF:** 3231 bp

**Locus ID:** 9147

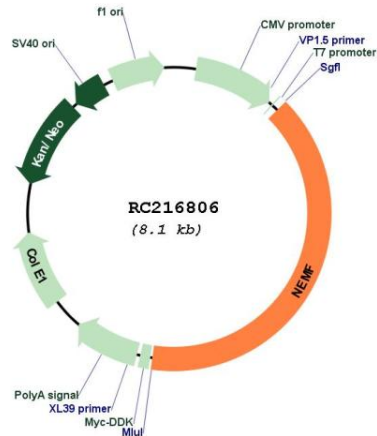
UniProt ID: [O60524](#)

Cytogenetics: 14q21.3

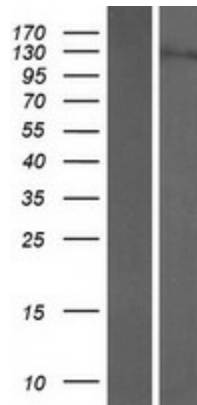
MW: 122.8 kDa

Gene Summary: This gene encodes a component of the ribosome quality control complex. The encoded protein facilitates the recognition and ubiquitination of stalled 60S subunits by the ubiquitin ligase listerin. A similar protein in fly functions as a tumor suppressor. [provided by RefSeq, Jul 2016]

### Product images:



Circular map for RC216806



Western blot validation of overexpression lysate (Cat# [LY417803]) using anti-DDK antibody (Cat# [TA50011-100]). Left: Cell lysates from untransfected HEK293T cells; Right: Cell lysates from HEK293T cells transfected with RC216806 using transfection reagent MegaTran 2.0 (Cat# [TT210002]).