

Product datasheet for **RC216804**

OFCC1 (NM_153003) Human Tagged ORF Clone

Product data:

Product Type:	Expression Plasmids
Product Name:	OFCC1 (NM_153003) Human Tagged ORF Clone
Tag:	Myc-DDK
Symbol:	OFCC1
Synonyms:	MGC142101; MGC142103; MRDS1; orofacial cleft 1 candidate 1; orofacial clefting chromosomal breakpoint region 1; OTTHUMP00000039226
Mammalian Cell Selection:	Neomycin
Vector:	pCMV6-Entry (PS100001)
E. coli Selection:	Kanamycin (25 ug/mL)
ORF Nucleotide Sequence:	>RC216804 ORF sequence Red=Cloning site Blue=ORF Green=Tags(s)

TTTTGTAATACGACTCACTATAGGGCGGCCGGAATTCGTCGACTGGATCCGGTACCGAGGAGATCTGCC
GCC**CGATCGCC**

ATGGAGAGAGAGAAGTTTCAGCAGAAGGCTCTGAAGCAAATAAGCAGAAGAAATCCAAGTCGGCTGAAT
TTCTGATGGTTAAAGAAGATAGAGAAGCTACAGAAGGCACTGAAATCCAGCTTTTAACATGAGCAGTCC
AGATCTCTCAGCATGTCAGACTGCAGAAAAGAAAGTTATTAGACACGACATGCCGGATCGCACCTTGCA
GCTCACCAACAAAAATTCAGGCTGCCAGCCTCTGCAGAACAAAAGAAATGAATACGGCAGAAATTACT
TTGACCCACTGATGGATGAGGAAATAAACCCAAGGCAGTGTGCGACGGAGGTCAGCAGAGAAGATGACGA
TAGAATTTTCTATAATCGATTAACGAAGCTTTTGTATGAGAGCAGACAAGGAGAACCCCAAGATGAGAGT
GGCCGGGAGGAGACTCTGAATTCTGAAGCACCTGGGAGTTCCAATAAGAGTCACGAAATCCACAAGAAG
CCAGCGAAGCCACCCTGCTCACCTTGAGAGTTCCAAAGATCTCAGAAAATAAATTCTGCTTGGAAAG
TTCTCCATTAGAACAGGAAATTAGATCTACTTCATTGCATTGTATGGAGGATGAGATGAGTCATCCATGG
ATACTCTTGCTCAAAGTAACTGCTGTAATCAGAAGCAGGAGGACTATAGAGAGCAAAGATTC

ACGCGTACGCGGCCGCTCGAGCAGAACTCATCTCAGAAGAGGATCTGGCAGCAAATGATATCCTGGATT
ACAAGGATGACGACGATAAGGTTTAA



[View online »](#)

Protein Sequence: >RC216804 protein sequence
Red=Cloning site Green=Tags(s)

MEREKFQQKALKQTKQKKSKSAEFLMVKEDREATEGTGNPAFNMSSPDL SACQTAEKKVIRHDM PDR TLA
 AHQKFR LPA SAEPK GNEYGR NYFDPLMDEE INPRQCA TEVSREDDDR IFYNRL TKLFDES RQGE PQDES
 GREETLNSEAPGSSNKSHEIHKEASEATT AHLEEFQRSQKTIILLGSSPLEQEIRSTSLHCMEDEMSHPW
 ILLLLKVTAVIRSR RYYREQRF

TRTRPLEQKLISEEDLAANDILDYKDDDDKV

Chromatograms: https://cdn.origene.com/chromatograms/mk6461_f08.zip

Restriction Sites: SgfI-MluI

Cloning Scheme:



ACCN: NM_153003

ORF Size: 693 bp

OTI Disclaimer: The molecular sequence of this clone aligns with the gene accession number as a point of reference only. However, individual transcript sequences of the same gene can differ through naturally occurring variations (e.g. polymorphisms), each with its own valid existence. This clone is substantially in agreement with the reference, but a complete review of all prevailing variants is recommended prior to use. [More info](#)

OTI Annotation: This clone was engineered to express the complete ORF with an expression tag. Expression varies depending on the nature of the gene.

Components: The ORF clone is ion-exchange column purified and shipped in a 2D barcoded Matrix tube containing 10ug of transfection-ready, dried plasmid DNA (reconstitute with 100 ul of water).

- Reconstitution Method:**
1. Centrifuge at 5,000xg for 5min.
 2. Carefully open the tube and add 100ul of sterile water to dissolve the DNA.
 3. Close the tube and incubate for 10 minutes at room temperature.
 4. Briefly vortex the tube and then do a quick spin (less than 5000xg) to concentrate the liquid at the bottom.
 5. Store the suspended plasmid at -20°C. The DNA is stable for at least one year from date of shipping when stored at -20°C.

RefSeq: [NM_153003.1](#), [NP_694548.1](#)

RefSeq Size: 958 bp

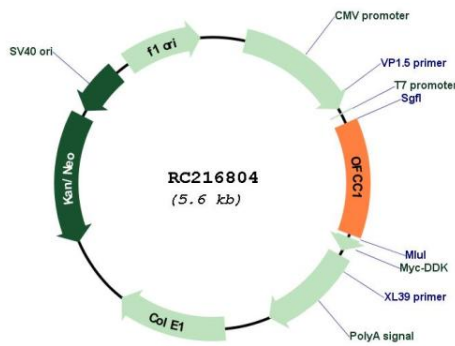
RefSeq ORF: 695 bp

Locus ID: 266553

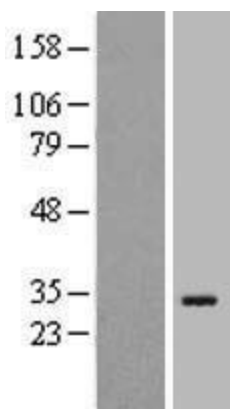
Cytogenetics: 6p24.3

MW: 26.8 kDa

Product images:



Circular map for RC216804



Western blot validation of overexpression lysate (Cat# [LY407190]) using anti-DDK antibody (Cat# [TA50011-100]). Left: Cell lysates from untransfected HEK293T cells; Right: Cell lysates from HEK293T cells transfected with RC216804 using transfection reagent MegaTran 2.0 (Cat# [TT210002]).