

Product datasheet for **RC216803**

HUNK (NM_014586) Human Tagged ORF Clone

Product data:

Product Type:	Expression Plasmids
Product Name:	HUNK (NM_014586) Human Tagged ORF Clone
Tag:	Myc-DDK
Symbol:	HUNK
Mammalian Cell Selection:	Neomycin
Vector:	pCMV6-Entry (PS100001)
E. coli Selection:	Kanamycin (25 ug/mL)



[View online »](#)

ORF Nucleotide Sequence:

>RC216803 representing NM_014586
 Red=Cloning site Blue=ORF Green=Tags(s)

TTTTGTAATACGACTCACTATAGGGCGGCCGGGAATTCGTCGACTGGATCCGGTACCGAGGAGATCTGCC
 GCC**CGGATCGCC**

ATGCCGGCGCGCGGGGACGGGCTCCTGGGGAGCCGGCGCGCCTGGGGCGCGCGCGCGCGGAGG
 ACGCGGCCAGGCCGCGCGGCCCTGCGAGGGAAGTTTCTGCCTGCCTGGGTGAGCGCGTGCCTCCGCA
 GCGGCTCCGCGACTTCCAGCACCAAGCGCGTGGCACTACCTCATCGGCAGCAGGAAGCTGGGCGAG
 GGCTCCTTTGCCAAGGTGCGCGAGGGGCTGCACGTGCTGACCGGGGAGAAGGTGGCCATAAAAGTCATTG
 ATAAGAAGAGAGCAAAAAGGACACCTATGTCACCAAAAACCTGCGGCGAGAGGGTCAGATCCAGCAGAT
 GATCCGCCACCCCAATCACTCAGCTCCTTGATATTTAGAAAACGAAAAACAGTACTACTCTGGTCATG
 GAGCTGTGCCCTGGGGCAACCTGATGCACAAGATCTATGAGAAGAAGCGGCTGGAGGAGTCCGAAGCCC
 GCAGATACATCCGACAGCTCATCTCTGCCGTAGAGCACCTGCACCGGGCCGGGTGGTCCACAGAGACTT
 GAAGATAGAGAATTTGCTACTAGATGAAGACAATAATATCAAGCTGATTGACTTTGGTTTGAGCAACTGC
 GCAGGGATCCTGGTTACTCGGATCCGTTACAGCACACAGTGTGGCAGCCCTGCCTACGCTGCACCTGAAC
 TGCTCGCCAGGAAGAAATACGGCCCCAAAATCGATGTCTGGTCCATAGGTGTGAACATGTATGCCATGTT
 GACCGGGACGCTGCCTTTACGGTGGAGCCTTTCAGCCTGAGGGCTTTGTACCAGAAGATGGTAGACAAA
 GAAATGAACCCCTCCCACTCAGCTCTCCACAGGTGCCATCAGTTTCTGCGCTCTCTCTGGAACCGG
 ATCCTGTGAAGAGGCCAAATATTCAGCAGGCACTGGCGAATCGCTGGCTTAATGAGAATTACACGGGCAA
 AGTGCCCTGTAATGTACCTATCCCAACAGGATTTCTCTGGAAGATCTGAGCCCGAGCGTCTGTGCAC
 ATGACCGAGAAGTGGTTACAAGAACAGCGACGTGATCAACACTGTGCTCTCAACCGCGCCTGCCACA
 TCCTGGCCATCTACTTCTCTTAAACAAGAACTGGAGCGCTATTTGTCAGGGAATCTGACATCCAGGA
 CAGCCTCTGCTACAAGACCCGGCTCTACCAGATAGAAAAGTACAGGGCCCCAAGGAGTCCCTATGAGGCC
 TCTCTGGACACCTGGACACGAGATCTTGAATCCATGCCGTGCAGGATAAAAAGCCAAAAGAACAAGAAA
 AAAGAGGGGATTTTCTTCATCGACCATTCTCCAAGAAGTTGGACAAGAACCTGCCCTCGCACAAACAGCC
 CTCAGGCTCGCTCATGACACAGATTGAGAACACCAAGCCCTCCTGAAGGACCGAAGGCCTCCAAGTCC
 AGCTTCCCGACAAAGATTCTTTGGCTGCCGCAATATTTCCGCAAAACCTCAGATTCCAATTGTGTGG
 CTTCTTCTTCCATGGAGTTCATCCCGTGCCACCGCCAGGACCCCGAGGATTGTGAAGAAACCGGAGCC
 CCATCAGCCAGGGCCCGAAGCACTGGCATCCCCACAAGGAAGACCCCTGATGCTGGACATGGTGCCG
 TCCTTCGAGTCTGTGGATCGCGACGACCAGTAGAAGTGTGCTCCCTCTCATCTACAGGATTCTGA
 ACTCCCGGTGAGCTTGGCTCGCAGAAATTCAGCGAGAGGACGCTGTCCCGGGTCTGCCATCCGGAAG
 CATGTGCGCTCTCCATACTCCTTTGCATCCAACCTGGTCTCTTTTGTACGAAGATAAGAACAGCCCC
 CAAAAGAGGAGGGCCTGTGTTGCCACCTCCGGTTCAGCAATGGCCCATGCAGCCTCTGGGGAGCC
 CCAATTGTGTGAAAAGCCGAGGCCGGTTCCCTATGATGGGCATCGGACAGATGTTAAGGAAGCGCCATCA
 GAGTCTGCAGCCATCTGCAGATAGGCCCTGGAGGCCAGCTGCCCCACTGCAGCCCCTAGCCCCTGTG
 AACCTTGCTTTGACATGGCCGATGGGGTCAAGACCCAGTGC

ACGCGTACGCGGCCGCTCGAGCAGAACTCATCTCAGAAGAGGATCTGGCAGCAAATGATATCCTGGATT
 ACAAGGATGACGACGATAAGGTTTAA

Protein Sequence: >RC216803 representing NM_014586
Red=Cloning site Green=Tags(s)

```
MPAAAGDGLLGEPAAPGGGGGAEDAARPAACEGSFLPAWVSGVPRERLRDFQHHKRVGNYLIGSRKLGEGSFAKVVREGLHVLGTGEKVAIKVIDKKRAKKDYYVTKNLRREGQIQMIRHPNITQLLDILETENSYYLVMELCPGGNLMHKIYEKKRLEESEARRYIRQLISAVEHLHRAGVVHRDLKIENLLDEDNNIKLIDFGLSNCAGILGYSDPFSTQCGSPAYAAPELLARKKYGPKIDVWSIGVNMAYMLTGLPFTVEPFLRALYQKMVDKEMNPLPTQLSTGAISFLRSLLEPDPVKRPNIQQALANRWLNENYTGKVPNCNVTYPNRSLEDLSPSVVLHMTEKLGKNSDVINTVLSNRACHILAIYFLLNKKLERYLSGKSDIQDSLKYKTRLYQIEKYRAPKESYEA SLDTWTRDLEFHAVQDKKPKQEKRDFLHRPFSKKLDKNLPSHKQPSGSLMTQIQNTKALLKDRKASKS SFPDKDSFGCRNIFRKTSDSNCAVSSSMEFIPVPPPRTPRIVKKPEPHQPGPGSTGIPHKEDPLMDMVR SFESVDRDDHVEVLSPSHHYRILNSPVS LARRNSSERTLSPGLPSGMSPLHTPLHPTLVSAFHEDKNSP PKEEGLCCPPVPVSNPMPQLGSPNCVKSRGRFPMMGIGQMLRKRHQSLQPSADRPLEASLPLQLAPV NLAAFDMADGVKTQC
```

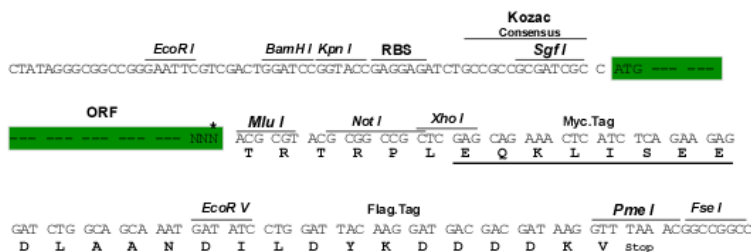
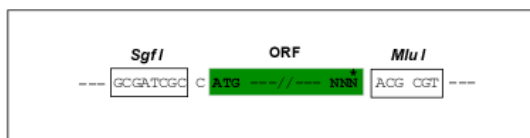
TRTRPLEQKLISEEDLAANDILDYKDDDDKV

Chromatograms: https://cdn.origene.com/chromatograms/mg3836_d09.zip

Restriction Sites: SgfI-MluI

Cloning Scheme:

Cloning sites used for ORF Shuttling:



* The last codon before the Stop codon of the ORF

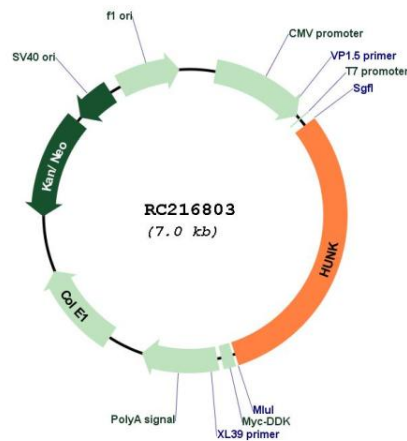
ACCN: NM_014586

ORF Size: 2142 bp

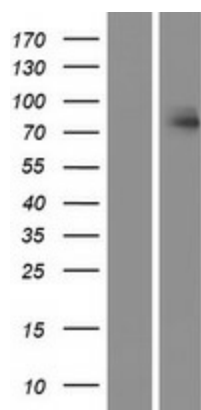
OTI Disclaimer: The molecular sequence of this clone aligns with the gene accession number as a point of reference only. However, individual transcript sequences of the same gene can differ through naturally occurring variations (e.g. polymorphisms), each with its own valid existence. This clone is substantially in agreement with the reference, but a complete review of all prevailing variants is recommended prior to use. [More info](#)

OTI Annotation: This clone was engineered to express the complete ORF with an expression tag. Expression varies depending on the nature of the gene.

Components:	The ORF clone is ion-exchange column purified and shipped in a 2D barcoded Matrix tube containing 10ug of transfection-ready, dried plasmid DNA (reconstitute with 100 ul of water).
Reconstitution Method:	<ol style="list-style-type: none">1. Centrifuge at 5,000xg for 5min.2. Carefully open the tube and add 100ul of sterile water to dissolve the DNA.3. Close the tube and incubate for 10 minutes at room temperature.4. Briefly vortex the tube and then do a quick spin (less than 5000xg) to concentrate the liquid at the bottom.5. Store the suspended plasmid at -20°C. The DNA is stable for at least one year from date of shipping when stored at -20°C.
RefSeq:	NM_014586.1 , NP_055401.1
RefSeq Size:	7385 bp
RefSeq ORF:	2145 bp
Locus ID:	30811
UniProt ID:	P57058
Cytogenetics:	21q22.11
Protein Families:	Druggable Genome, Protein Kinase
MW:	79.5 kDa

Product images:

Circular map for RC216803



Western blot validation of overexpression lysate (Cat# [LY415185]) using anti-DDK antibody (Cat# [TA50011-100]). Left: Cell lysates from untransfected HEK293T cells; Right: Cell lysates from HEK293T cells transfected with RC216803 using transfection reagent MegaTran 2.0 (Cat# [TT210002]).