

## Product datasheet for **RC216801**

### **UBE1C (UBA3) (NM\_198195) Human Tagged ORF Clone**

#### **Product data:**

Product Type:	Expression Plasmids
Product Name:	UBE1C (UBA3) (NM_198195) Human Tagged ORF Clone
Tag:	Myc-DDK
Symbol:	UBE1C
Synonyms:	hUBA3; NAE2; UBE1C
Mammalian Cell Selection:	Neomycin
Vector:	pCMV6-Entry (PS100001)
E. coli Selection:	Kanamycin (25 ug/mL)



[View online »](#)

**ORF Nucleotide Sequence:**

>RC216801 representing NM\_198195  
 Red=Cloning site Blue=ORF Green=Tags(s)

TTTTGTAATACGACTCACTATAGGGCGGCCGGGAATTCGTCGACTGGATCCGGTACCGAGGAGATCTGCC  
 GCC**CGCATCGCC**

ATGGCGGATGGCGAGGAGCCAATGGCTGTTGATGGTGGGTGTGGGACACTGGAGACTGGGAAGGTCGCT  
 GGAACCATGTAAAGAAGTTCCTCGAGCGATCTGGACCCTTCACACACCCTGATTTGCGAACCGAGCACTGA  
 ATCTCTCCAGTTCCTGTTAGATACATGTAAAGTCTAGTCATTGGAGCTGGCGGCTTAGGATGTGAGCTC  
 CTGAAAACTGGCCTTGTCTGGTTTTAGACAGATTTCATGTTATAGATATGGACACTATAGATGTTTCCA  
 ATCTAAATAGGCAGTTTTTATTTAGGCCTAAAGATATTGGAAGACCTAAGGCTGAAGTTGCTGCAGAATT  
 TCTAAATGACAGAGTTCCTAATTGCAATGTAGTCCACATTTCAACAAGATTCAAGATTTTAAACGACT  
 TTCTATCGACAATTCATATTATTGTATGTGGACTGGACTCTATCATCGCCAGAAGATGGATAAATGGCA  
 TGCTGATATCTTCTAAATTATGAAGATGGTGTCTTAGATCCAAGCTCCATTGTCCTTTGATAGATGG  
 GGGGACAGAAGGTTTTAAAGGAAATGCCGGGTGATTCTGCCTGGAATGACTGCTTGTATCGAATGCACG  
 CTGGAACCTTATCCACCACAGGTTAATTTCCCATGTGCACCATTGCATCTATGCCCAGGCTACCAGAAC  
 ACTGTATTGAGTATGTAAGGATGTTGCAGTGGCCTAAGGAGCAGCCTTTTGGAGAAGGGTTCCATTAGA  
 TGGAGATGATCCTGAACATATACAATGGATTTTCCAAAAATCCCTAGAGAGAGCATCACAAATAATATT  
 AGGGGTGTACGTATAGGCTCACTCAAGGGGTAGTAAAAAGAAATCATTCTGCAGTAGCTCCACAAATG  
 CAGTCATTGCAGCTGTGTGCCACTGAGGTTTTTAAAAAGCCACAAGTGCATACATCCCTTGAATAA  
 TTACTTGGTGTAAATGATGTAGATGGCTGTATACATACACATTTGAAGCAGAAAAGAAAGAAAAGTGC  
 CCAGCTTGTAGCCAGCTTCCTCAAAATATTCAGTTTTTCCATCAGCTAACTACAGGAGGTTTTGGATT  
 ATCTAACCAATAGTCTTCTCTGCAAAATGAAATCTCCAGCCATCACAGCCACCCTAGAGGAAAAAATAG  
 AACACTTTACTTACAGTCGGTAACCTCTATTGAAGAACGAACAAGGCCAAATCTCTCAAAAACATTGAAA  
 GAATTGGGCTTGTGATGGACAAGAACTGGCGGTTGCTGATGTACCACCCACAGACTGTACTATTCA  
 AACTTCATTTACTTCT

**ACGCGT**ACGCGGCCGCTCGAGCAGAACTCATCTCAGAAGAGGATCTGGCAGCAAATGATATCCTGGATT  
 ACAAGGATGACGACGATAAGGTTTAA

**Protein Sequence:**

>RC216801 representing NM\_198195  
 Red=Cloning site Green=Tags(s)

MADGEEPMAVDGGCGDGDWEGRWNVKFLERSGPFTHPDFEPSTESLQFLDTCVKLVIGAGGLGCEL  
 LKNLALSGFRQIHVIDMTIDVSNLNRQFLFRPKDIGRPKAEVAEFLNDRVPNCNVVPHFNKIQDFNDT  
 FYRQFHIIIVCGLDSEIARRWINGMLISLLNYEDGVLDPSSIVPLIDGGTEGFKGNARVILPGMTACIECT  
 LELYPPQVNFPMCTIASMPRLPEHCIEYVRMLQWPKEQPFGEVPLDGDDPEHIQWIFQKSLERASQYNI  
 RGVTYRLTQGVVKRIIPAVASTNAVIAAVCATEVFKIATSAYIPLNNYLVFNDVDGLYTYTFAERKENC  
 PACSQLPQNIQFSPSAKLQEVLDYLTNSASLQMKSPAITATLEGKNRTLYLQSVTSIEERTRPNLSKTLK  
 ELGLVDGQELAVADVTPQTVLFLKHFST

**TR**TRPLEQKLISEEDLAANDILDYKDDDDKV

**Chromatograms:**

[https://cdn.origene.com/chromatograms/mg2876\\_a10.zip](https://cdn.origene.com/chromatograms/mg2876_a10.zip)

**Restriction Sites:**

Sgfl-Mlul

**Cloning Scheme:**


**ACCN:** NM\_198195

**ORF Size:** 1347 bp

**OTI Disclaimer:** The molecular sequence of this clone aligns with the gene accession number as a point of reference only. However, individual transcript sequences of the same gene can differ through naturally occurring variations (e.g. polymorphisms), each with its own valid existence. This clone is substantially in agreement with the reference, but a complete review of all prevailing variants is recommended prior to use. [More info](#)

**OTI Annotation:** This clone was engineered to express the complete ORF with an expression tag. Expression varies depending on the nature of the gene.

**Components:** The ORF clone is ion-exchange column purified and shipped in a 2D barcoded Matrix tube containing 10ug of transfection-ready, dried plasmid DNA (reconstitute with 100 ul of water).

- Reconstitution Method:**
1. Centrifuge at 5,000xg for 5min.
  2. Carefully open the tube and add 100ul of sterile water to dissolve the DNA.
  3. Close the tube and incubate for 10 minutes at room temperature.
  4. Briefly vortex the tube and then do a quick spin (less than 5000xg) to concentrate the liquid at the bottom.
  5. Store the suspended plasmid at -20°C. The DNA is stable for at least one year from date of shipping when stored at -20°C.

**RefSeq:** [NM\\_198195.2](#)

**RefSeq Size:** 2094 bp

**RefSeq ORF:** 1350 bp

**Locus ID:** 9039

**UniProt ID:** [Q8TBC4](#)

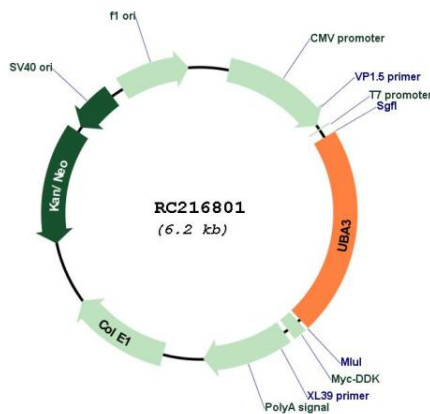
**Cytogenetics:** 3p14.1

**Protein Pathways:** Ubiquitin mediated proteolysis

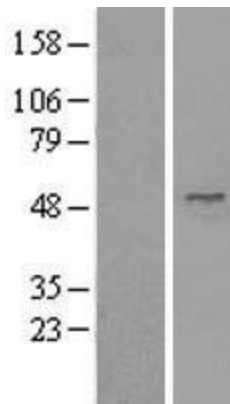
**MW:** 49.9 kDa

**Gene Summary:** The modification of proteins with ubiquitin is an important cellular mechanism for targeting abnormal or short-lived proteins for degradation. Ubiquitination involves at least three classes of enzymes: ubiquitin-activating enzymes, or E1s, ubiquitin-conjugating enzymes, or E2s, and ubiquitin-protein ligases, or E3s. This gene encodes a member of the E1 ubiquitin-activating enzyme family. The encoded enzyme associates with AppBp1, an amyloid beta precursor protein binding protein, to form a heterodimer, and then the enzyme complex activates NEDD8, a ubiquitin-like protein, which regulates cell division, signaling and embryogenesis. Multiple alternatively spliced transcript variants encoding distinct isoforms have been found for this gene. [provided by RefSeq, Jul 2008]

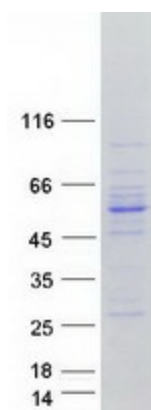
**Product images:**



Circular map for RC216801



Western blot validation of overexpression lysate (Cat# [LY404973]) using anti-DDK antibody (Cat# [TA50011-100]). Left: Cell lysates from untransfected HEK293T cells; Right: Cell lysates from HEK293T cells transfected with RC216801 using transfection reagent MegaTran 2.0 (Cat# [TT210002]).



Coomassie blue staining of purified UBA3 protein (Cat# [TP316801]). The protein was produced from HEK293T cells transfected with UBA3 cDNA clone (Cat# RC216801) using MegaTran 2.0 (Cat# [TT210002]).