

## Product datasheet for **RC216799**

### MSI2 (NM\_170721) Human Tagged ORF Clone

#### Product data:

**Product Type:** Expression Plasmids  
**Product Name:** MSI2 (NM\_170721) Human Tagged ORF Clone  
**Tag:** Myc-DDK  
**Symbol:** MSI2  
**Synonyms:** MSI2H  
**Mammalian Cell Selection:** Neomycin  
**Vector:** pCMV6-Entry (PS100001)  
**E. coli Selection:** Kanamycin (25 ug/mL)  
**ORF Nucleotide Sequence:** >RC216799 representing NM\_170721  
Red=Cloning site Blue=ORF Green=Tags(s)

TTTTGTAATACGACTCACTATAGGGCGGCCGGAATTCGTCGACTGGATCCGGTACCGAGGAGATCTGCC  
GCC**CGATCGCC**

ATGGCCGATCTGACATCGGTGCTCACTTCTGTTATGTTTTCTCCCTCTAGTAAAAATGTTTATCGGTGGAC  
TGAGCTGGCAGACCTCACCAGATAGCCTTAGAGACTATTTAGCAAATTTGGAGAAATTAGAGAATGTAT  
GGTCATGAGAGATCCCACTACGAAACGCTCCAGAGGCTTCGGTTTCGTCACGTTCCGAGACCCAGCAAGT  
GTAGATAAAGTATTAGGTCAGCCCCACCATGAGTTAGATTCCAAGACGATTGACCCCAAAGTTGCATTTCT  
CTCGTCGAGCGCAACCAAGATGGTCACAAGAACAAGAAAATATTTGTAGGCGGTTATCTGCGAACAC  
AGTAGTGGAAGATGTAAAGCAATATTTGAGCAGTTTGGCAAGGTGGAAGATGCAATGCTGATGTTTGAT  
AAAACACCAACAGGCACAGAGGTTTGGCTTTGTCACTTTTGAGAATGAAGATGTTGTGGAGAAAGTCT  
GTGAGATTCATTTCCATGAAATCAATAATAAATGGTAGAATGTAAAGAAAGCTCAGCCGAAAGAAGTCAT  
GTTCCACCTGGGACAAGAGGCCGGCCGGGGACTGCCTTACACCATGGACGCGTTTCATGCTTGGCATG  
GGGATGCTGGGATATCCCACTTCGTGGCGACCTATGGCCGTGGCTACCCCGATTTGCTCCAAGCTATG  
GCTATCAGTTCACAGACTATTTGCCGTTTCACAAGACATAATTTTTATCAAC

AG**CGGACCG**ACGCGTACGGCGCGCTCGAGCAGAACTCATCTCAGAAGAGGATCTGGCAGCAAATGATATCC  
TGGATTACAAGGATGACGACGATAAGGTTTAA



[View online »](#)

**Protein Sequence:** >RC216799 representing NM\_170721  
 Red=Cloning site Green=Tags(s)

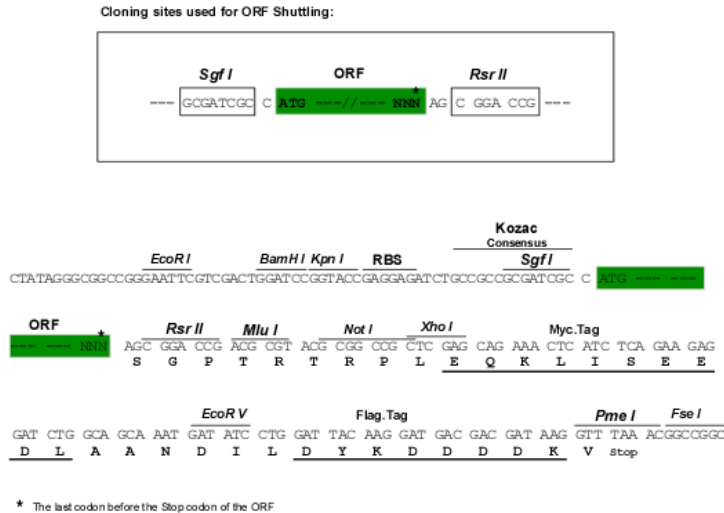
MADLTSVLTSMVFPSSKMFIGGLSWQTSPLSLRDYFSKFGEIRECMVMDPTTKRSRGFGVTFADPAS  
 VDKVLGQPHHELDSTKIDPKVAFPRRAQPKMVRTKKIFVGGLSANTVVEDVKQYFEQFGKVEDAMLMD  
 KTTNRHGRGFGVTFENEDVVEKVCEIHFHEINNKMVECKKAQPKEVMFPFGTRGRARGLPYTMADFMLGM  
 GMLGYPNFVATYGRGYPGFAPSYGYQFPDYLPVSQDIIIFIN

SGPTRRRLLEQKLISEEDLAANDILDYKDDDDKV

**Chromatograms:** [https://cdn.origene.com/chromatograms/ja1615\\_g03.zip](https://cdn.origene.com/chromatograms/ja1615_g03.zip)

**Restriction Sites:** SgfI-RsrII

**Cloning Scheme:**



**ACCN:** NM\_170721

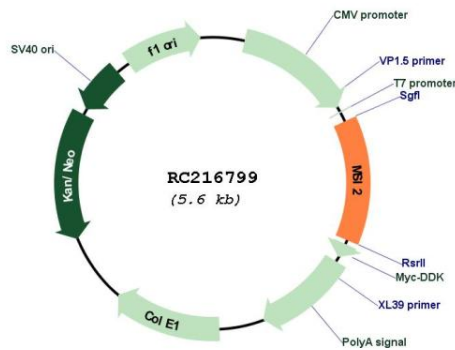
**ORF Size:** 753 bp

**OTI Disclaimer:** Due to the inherent nature of this plasmid, standard methods to replicate additional amounts of DNA in E. coli are highly likely to result in mutations and/or rearrangements. Therefore, OriGene does not guarantee the capability to replicate this plasmid DNA. Additional amounts of DNA can be purchased from OriGene with batch-specific, full-sequence verification at a reduced cost. Please contact our customer care team at [custsupport@origene.com](mailto:custsupport@origene.com) or by calling 301.340.3188 option 3 for pricing and delivery.

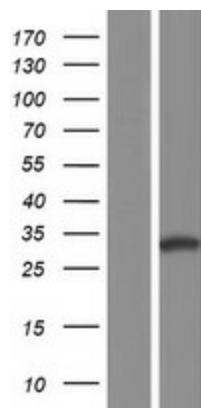
The molecular sequence of this clone aligns with the gene accession number as a point of reference only. However, individual transcript sequences of the same gene can differ through naturally occurring variations (e.g. polymorphisms), each with its own valid existence. This clone is substantially in agreement with the reference, but a complete review of all prevailing variants is recommended prior to use. [More info](#)

**OTI Annotation:** This clone was engineered to express the complete ORF with an expression tag. Expression varies depending on the nature of the gene.

<b>Components:</b>	The ORF clone is ion-exchange column purified and shipped in a 2D barcoded Matrix tube containing 10ug of transfection-ready, dried plasmid DNA (reconstitute with 100 ul of water).
<b>Reconstitution Method:</b>	<ol style="list-style-type: none"> <li>1. Centrifuge at 5,000xg for 5min.</li> <li>2. Carefully open the tube and add 100ul of sterile water to dissolve the DNA.</li> <li>3. Close the tube and incubate for 10 minutes at room temperature.</li> <li>4. Briefly vortex the tube and then do a quick spin (less than 5000xg) to concentrate the liquid at the bottom.</li> <li>5. Store the suspended plasmid at -20°C. The DNA is stable for at least one year from date of shipping when stored at -20°C.</li> </ol>
<b>RefSeq:</b>	<u>NM_170721.2</u>
<b>RefSeq Size:</b>	2151 bp
<b>RefSeq ORF:</b>	756 bp
<b>Locus ID:</b>	124540
<b>UniProt ID:</b>	<u>Q96DH6</u>
<b>Cytogenetics:</b>	17q22
<b>MW:</b>	28.2 kDa
<b>Gene Summary:</b>	<p>This gene encodes an RNA-binding protein that is a member of the Musashi protein family. The encoded protein is transcriptional regulator that targets genes involved in development and cell cycle regulation. Mutations in this gene are associated with poor prognosis in certain types of cancers. This gene has also been shown to be rearranged in certain cancer cells. [provided by RefSeq, Apr 2016]</p>

**Product images:**


Circular map for RC216799



Western blot validation of overexpression lysate (Cat# [LY406896]) using anti-DDK antibody (Cat# [TA50011-100]). Left: Cell lysates from untransfected HEK293T cells; Right: Cell lysates from HEK293T cells transfected with RC216799 using transfection reagent MegaTran 2.0 (Cat# [TT210002]).