

## Product datasheet for RC216793

### LIPT1 (NM\_145199) Human Tagged ORF Clone

#### Product data:

Product Type:	Expression Plasmids
Product Name:	LIPT1 (NM_145199) Human Tagged ORF Clone
Tag:	Myc-DDK
Symbol:	LIPT1
Synonyms:	LIPT1D
Mammalian Cell Selection:	Neomycin
Vector:	pCMV6-Entry (PS100001)
E. coli Selection:	Kanamycin (25 ug/mL)
ORF Nucleotide Sequence:	>RC216793 representing NM_145199 Red=Cloning site Blue=ORF Green=Tags(s)

TTTTGTAATACGACTCACTATAGGGCGGCCGGAATTCGTCGACTGGATCCGGTACCGAGGAGATCTGCC  
GCC**CGATCGCC**

ATGCTGATCCCATTTTCAATGAAGAATTGCTTCCAGTTACTTTGTAAGTCCAGGTCCTCCAGCAGCTGGCT  
TTAAAAAACAGTAAAAATGGGCTCATTTTACAGTCAATTTCCAATGATGTCTATCAAAATCTGGCTGT  
GGAAGACTGGATCCATGACCATATGAATCTAGAAGGCAAACCAATTCTATTCTTTGGCAGAATTCTCC  
TCTGTTGTAATTGGTAGGCATCAAATCCTTGGCAGGAATGTAACCTGAATCTAATGAGAGAAGAAGTA  
TAAACTGGCTCGGAGAAGAAGTGGAGGAGGAACAGTCTACCATGATATGGGTAATATCAATTTGACTTT  
CTTTACAACCAAAAAAAGTATGATAGAATGGAAAATCTGAAATTAATTGTGAGAGCTCTGAATGCTGTC  
CAACCCAGCTGGATGTGCAGGCTACCAAAAGATTTGACCTTTTACTTGATGGACAGTTTAAATCTCAG  
GAACAGCTTCTAAGATCGGCCGGACTACTGCCTATCACCATTGCACCTTTATTATGTAGTACTGATGGGAC  
GTTCTTGTCTTTGCTAAAGAGCCCTTACCAAGGGATCAGGAGCAATGCCACTGCTAGCATACCTTCC  
TTAGTGAAAAATCTTTTGGAAAAGGATCCCACTCTGACCTGTGAAGTACTAATGAATGCTGTTGCTACAG  
AGTATGCTGCTTATCATCAAATTGATAATCACATTCACCTAATAAACCAACGGATGAGACACTGTTTCC  
TGAATAAATAGCAAAGCCAAAGAACTGCAAACCTGGGAGTGGATATATGGCAAACTCCAAAGTTTAGT  
ATAAATACTTCTTTTCATGTGTTATATGAACAGTCACACTTGGAAATTAAGTATTCATAGACATAAAGA  
ATGGAAGAATTGAAATTTGTAATTGAAAGCACCTGATCATTGGTTGCCATTGGAAATACGTGACAAATT  
AAATTCAGTCTTATTGGCAGTAAGTTTGGCCAACTGAAACTACCATGCTAACAAATATATTACTTAGA  
ACATGTCCACAAGACCACAACTAAACAGTAAATGGAATATTCTCTGTGAAAAAATTAAGGGAATAATG

**ACGCGT**ACGCGGCCGCTCGAGCAGAACTCATCTCAGAAGAGGATCTGGCAGCAATGATATCCTGGATT  
ACAAGGATGACGACGATAAGGTTTAA



[View online »](#)

**Protein Sequence:** >RC216793 representing NM\_145199  
Red=Cloning site Green=Tags(s)

MLIPFSMKNCFQLLCNCQVPAAGFKKTVKNGLI LQSI SINDVYQNLAVEDWIHDHMNLEGKPI LFFWQNSP  
 SVVIGRHQNPWQECNLNLMREEGIKLARRRSGGGTVYHDMGNINL TFFT KKKYDRMENLKLIVRALNAV  
 QPQLDVQATKRFDLLLDGQFKISGTASKIGRTTAYHHCTLLCSTDGTFLSLLKSPYQGIRSNATASIPS  
 LVKNLLEKDPTLTCEVLMNAVATEYAAYHQIDNHIHLINPTDETLPFGINSKAKELQTWEWIYGKTPKFS  
 INTSFHVLVEQSHLEIKVFIDIKNGRIEICNIEAPDHWLPLEIRDKLNSSLIGSKFCPTETMLTNILLR  
 TCPQDHKLNSKWNILCEKIKGIM

TRTRPLEQKLISEEDLAANDILDYKDDDDKV

**Chromatograms:** [https://cdn.origene.com/chromatograms/mk6557\\_g10.zip](https://cdn.origene.com/chromatograms/mk6557_g10.zip)

**Restriction Sites:** SgfI-MluI

**Cloning Scheme:**



**ACCN:** NM\_145199

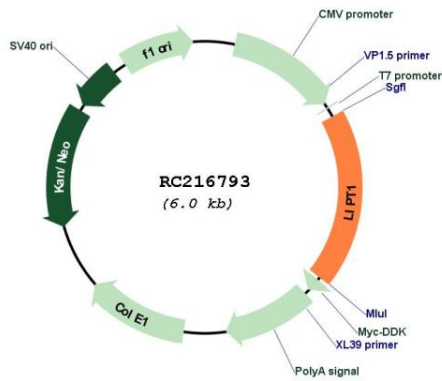
**ORF Size:** 1119 bp

**OTI Disclaimer:** Due to the inherent nature of this plasmid, standard methods to replicate additional amounts of DNA in E. coli are highly likely to result in mutations and/or rearrangements. Therefore, OriGene does not guarantee the capability to replicate this plasmid DNA. Additional amounts of DNA can be purchased from OriGene with batch-specific, full-sequence verification at a reduced cost. Please contact our customer care team at [custsupport@origene.com](mailto:custsupport@origene.com) or by calling 301.340.3188 option 3 for pricing and delivery.

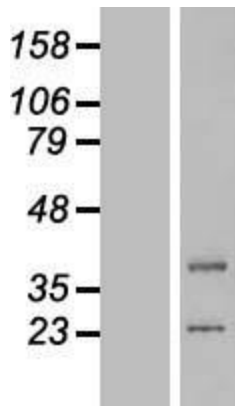
The molecular sequence of this clone aligns with the gene accession number as a point of reference only. However, individual transcript sequences of the same gene can differ through naturally occurring variations (e.g. polymorphisms), each with its own valid existence. This clone is substantially in agreement with the reference, but a complete review of all prevailing variants is recommended prior to use. [More info](#)

<b>OTI Annotation:</b>	This clone was engineered to express the complete ORF with an expression tag. Expression varies depending on the nature of the gene.
<b>Components:</b>	The ORF clone is ion-exchange column purified and shipped in a 2D barcoded Matrix tube containing 10ug of transfection-ready, dried plasmid DNA (reconstitute with 100 ul of water).
<b>Reconstitution Method:</b>	<ol style="list-style-type: none"><li>1. Centrifuge at 5,000xg for 5min.</li><li>2. Carefully open the tube and add 100ul of sterile water to dissolve the DNA.</li><li>3. Close the tube and incubate for 10 minutes at room temperature.</li><li>4. Briefly vortex the tube and then do a quick spin (less than 5000xg) to concentrate the liquid at the bottom.</li><li>5. Store the suspended plasmid at -20°C. The DNA is stable for at least one year from date of shipping when stored at -20°C.</li></ol>
<b>RefSeq:</b>	<a href="#">NM_145199.3</a>
<b>RefSeq Size:</b>	1288 bp
<b>RefSeq ORF:</b>	1122 bp
<b>Locus ID:</b>	51601
<b>UniProt ID:</b>	<a href="#">Q9Y234</a>
<b>Cytogenetics:</b>	2q11.2
<b>Domains:</b>	BPL_LipA_LipB
<b>Protein Pathways:</b>	Lipoic acid metabolism, Metabolic pathways
<b>MW:</b>	42.3 kDa
<b>Gene Summary:</b>	The process of transferring lipoic acid to proteins is a two-step process. The first step is the activation of lipoic acid by lipoate-activating enzyme to form lipoyl-AMP. For the second step, the protein encoded by this gene transfers the lipoyl moiety to apoproteins. Alternative splicing results in multiple transcript variants. A related pseudogene has been identified on chromosome 13. Read-through transcription also exists between this gene and the neighboring downstream mitochondrial ribosomal protein L30 (MRPL30) gene. [provided by RefSeq, Mar 2011]

Product images:



Circular map for RC216793



Western blot validation of overexpression lysate (Cat# [LY408046]) using anti-DDK antibody (Cat# [TA50011-100]). Left: Cell lysates from untransfected HEK293T cells; Right: Cell lysates from HEK293T cells transfected with [RC218958] using transfection reagent MegaTran 2.0 (Cat# [TT210002]).