

Product datasheet for RC216781

GDAP1 (NM_018972) Human Tagged ORF Clone

Product data:

Product Type:	Expression Plasmids
Product Name:	GDAP1 (NM_018972) Human Tagged ORF Clone
Tag:	Myc-DDK
Symbol:	GDAP1
Synonyms:	CMT4; CMT4A; CMTRIA
Mammalian Cell Selection:	Neomycin
Vector:	pCMV6-Entry (PS100001)
E. coli Selection:	Kanamycin (25 ug/mL)
ORF Nucleotide Sequence:	>RC216781 representing NM_018972 Red=Cloning site Blue=ORF Green=Tags(s)

TTTTGTAATACGACTCACTATAGGGCGGCCGGAATTCGTCGACTGGATCCGGTACCGAGGAGATCTGCC
GCC**CGATCGCC**

ATGGCTGAGAGGCAGGAAGAGCAGAGAGGGAGCCGCCCTTGAGGGCGGAAGGCAAGGCCGACGCGGAGG
TTAAGCTCATTCTGTACCATTGGACGCATTCTTCAGCTCTCAAAGGTGCGCTTGGTAATTGCTGAAAA
GGCATTGAAGTGCAGGAACATGATGTAAGTCTGCCCTTGAGTGAGCACAATGAGCCTTGGTTTATGCGT
TTGAACCAACTGGAGAAGTGCCTGTCTTATCCACGGGAAAACATAATTTGTGAGGCCACTCAGATCA
TTGATTATCTTGAACAGACTTTCCTGGATGAAAGAACCAGGTTAATGCCTGATAAAGAAAGCATGTA
TTACCCACGGGTACAACATTACCGAGAGCTGCTTGACTCCTTGCCAATGGATGCCATACACATGGCTGC
ATTTTACATCCTGAGTTAACTGTGGACTCCATGATCCCGCTTATGCAACTACAAGGATTCGTAGCCAAA
TTGAAACACAGAGTCTGAGCTGAAGAACTTGCTGAAGAAAACCCAGATTTACAAGAAGCATACATTGC
AAAACAGAAACGACTTAAATCAAAGCTGCTTGATCATGACAATGTCAAGTATTTGAAGAAAATCTTGAT
GAGTTGGAGAAAGTCTTGGATCAGGTTGAACTGAATTGCAAAGAAGAAATGAAGAAACCCAGAAGAGG
GCCAGCAACCTTGGCTCTGCGGTGAATCCTTACCCTGGCAGACGTCTCACTCGCTGTACATTGCATCG
ACTGAAGTTCTGGGTTTGAAGGAGAAAACATTTAACAAGTTTTAGGACATGTCAACAATATTAATCTCTGCAG
GAGCGTCTTGAAGAGAAAACATTTAACAAGTTTTAGGACATGTCAACAATATTAATCTCTGCAG
TGCTGCCAACAGCATTCCGGGTGGCCAAGAAAAGGCCCCCAAAGTTCTTGGCAGCACCCCTTGTGGTTGG
TTTGCTTGCAGGAGTGGGATATTTTGTCTTTATGCTTTTCAGAAAAGAGGCTTGGCAGCATGATATTAGCA
TTTAGACCCAGACCAAATTATTTTC

ACGCGTACGCGGCCGCTCGAGCAGAAAACATCTCAGAAGAGGATCTGGCAGCAAATGATATCCTGGATT
ACAAGGATGACGACGATAAGGTTTAA



[View online »](#)

Protein Sequence: >RC216781 representing NM_018972
Red=Cloning site Green=Tags(s)

MAERQEEQRGSPPLRAEGKADAEVKLILYHWFHSFSSQKVRLVIAEKALKCEEHDVSLPLSEHNPEWFMRLNSTGEVPVLIHGNIICEATQIIDYLEQTFLDERTPRLMPDKESMYYPVQHYRELLDSLPMDAYTHGCIHLPELTVDSMIPAYATTRIRSQIGNTESELKLAEEENPDLQEAYIAKQKRLKSKLLDHDNVKYLKKILD ELEKVLQVETELQRRNEETPEEGQPWLCGESFTLADVSLAVTLHRLKFLGFARRNWGNGKRPNLETYY ERVLKRKTFNKVLGHVNNILISAVLPTAFRVAKKRAPKVLGTTLVVGLLAGVGYFAFMLFRKRLGSMILAFRPRPNYF

TRTRPLEQKLISEEDLAANDILDYKDDDDKV

Chromatograms: https://cdn.origene.com/chromatograms/mk8054_c02.zip

Restriction Sites: SgfI-MluI

Cloning Scheme:



ACCN: NM_018972

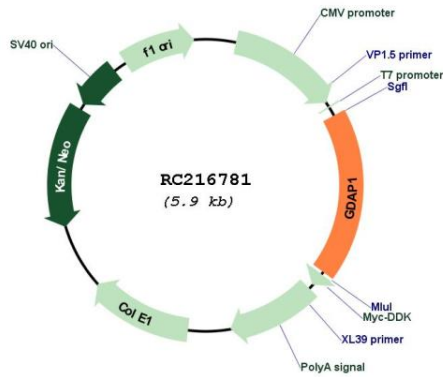
ORF Size: 1074 bp

OTI Disclaimer: Due to the inherent nature of this plasmid, standard methods to replicate additional amounts of DNA in E. coli are highly likely to result in mutations and/or rearrangements. Therefore, OriGene does not guarantee the capability to replicate this plasmid DNA. Additional amounts of DNA can be purchased from OriGene with batch-specific, full-sequence verification at a reduced cost. Please contact our customer care team at custsupport@origene.com or by calling 301.340.3188 option 3 for pricing and delivery.

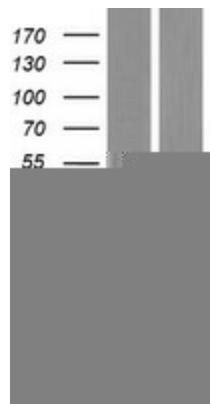
The molecular sequence of this clone aligns with the gene accession number as a point of reference only. However, individual transcript sequences of the same gene can differ through naturally occurring variations (e.g. polymorphisms), each with its own valid existence. This clone is substantially in agreement with the reference, but a complete review of all prevailing variants is recommended prior to use. [More info](#)

OTI Annotation:	This clone was engineered to express the complete ORF with an expression tag. Expression varies depending on the nature of the gene.
Components:	The ORF clone is ion-exchange column purified and shipped in a 2D barcoded Matrix tube containing 10ug of transfection-ready, dried plasmid DNA (reconstitute with 100 ul of water).
Reconstitution Method:	<ol style="list-style-type: none">1. Centrifuge at 5,000xg for 5min.2. Carefully open the tube and add 100ul of sterile water to dissolve the DNA.3. Close the tube and incubate for 10 minutes at room temperature.4. Briefly vortex the tube and then do a quick spin (less than 5000xg) to concentrate the liquid at the bottom.5. Store the suspended plasmid at -20°C. The DNA is stable for at least one year from date of shipping when stored at -20°C.
RefSeq:	NM_018972.4
RefSeq Size:	3899 bp
RefSeq ORF:	1077 bp
Locus ID:	54332
UniProt ID:	Q8TB36
Cytogenetics:	8q21.11
Domains:	GST_N
Protein Families:	Druggable Genome, Transmembrane
MW:	41.2 kDa
Gene Summary:	This gene encodes a member of the ganglioside-induced differentiation-associated protein family, which may play a role in a signal transduction pathway during neuronal development. Mutations in this gene have been associated with various forms of Charcot-Marie-Tooth Disease and neuropathy. Two transcript variants encoding different isoforms and a noncoding variant have been identified for this gene. [provided by RefSeq, Feb 2012]

Product images:



Circular map for RC216781



Western blot validation of overexpression lysate (Cat# [LY412818]) using anti-DDK antibody (Cat# [TA50011-100]). Left: Cell lysates from untransfected HEK293T cells; Right: Cell lysates from HEK293T cells transfected with RC216781 using transfection reagent MegaTran 2.0 (Cat# [TT210002]).