

Product datasheet for **RC216776**

SLC23A2 (NM_005116) Human Tagged ORF Clone

Product data:

Product Type:	Expression Plasmids
Product Name:	SLC23A2 (NM_005116) Human Tagged ORF Clone
Tag:	Myc-DDK
Symbol:	SLC23A2
Synonyms:	NBTL1; SLC23A1; SVCT2; YSPL2
Mammalian Cell Selection:	Neomycin
Vector:	pCMV6-Entry (PS100001)
E. coli Selection:	Kanamycin (25 ug/mL)



[View online »](#)

ORF Nucleotide Sequence:

>RC216776 representing NM_005116.
 Blue=ORF Red=Cloning site Green=Tag(s)

```
GCTCGTTTAGTGAACCGTCAGAATTTTGTAAACGACTCACTATAGGGCGGCCGGGAATTCGTGCGACTG
GATCCGGTACCGAGGAGATCTGCCGCCCGGATCGCC
ATGATGGGTATTGGTAAGAATACCACATCCAAATCAATGGAGGCTGGAAGTTCAACAGAAGGCAAATAC
GAAGACGAGGCAAAGCACCCAGCTTTCTCACTTTCCGGTGGTGATAAATGGAGGCGCCACCTCCAGC
GGTGAGCAGGACAATGAGGACACTGAGCTCATGGCGATCTACACTACGGAAAACGGCATTGCAGAAAAG
AGCTCTCTCGCTGAGACCCTGGATAGCACTGGCAGTCTGGACCCCGCGATCAGACATGATTTATACC
ATAGAAGATGTTCCCTCCCTGGTACCTGTGTATATTTCTGGGGCTACAGCACTACCTGACATGCTTCAGC
GGCAGCATCGCAGTGCCCTTCTGTTGGCTGATGCCATGTGTGTGGGTACGACCAGTGGGCCACCAGC
CAGCTCATTGGGACCATTTTCTCTGTGTGGGAATCACTACTTTGCTACAGACAACGTTTGGATGCAGG
TTACCCCTGTTTCAGGCCAGTGTCTTTCATTTTTGGCCCTGCTCGAGCCATCCTGTCTTTAGATAAA
TGGAAATGTAACACCACAGATGTTTCAGTTGCCAATGGAACAGCAGAGCTGTTGCACACAGAACACATC
TGGTATCCCGGATCCGAGAGATCCAGGGGCCATCATATGTCCTCACTGATAGAAGTAGTCATCGGC
CTCCTCGGCTGCTGGGGCTCTACTGAAGTACATCGGTCCCTTGACCATTACACCCACGGTGGCCCTA
ATTGGCCTCTCTGGTTCCAGGCAGCGGGGAGAGAGCCGGGAAGCACTGGGGCATTGCCATGCTGACA
ATATTCCTAGTATTACTGTTTTCTCAATACGCCAGAAATGTTAAATTTCTCTCCCGATTATAAATCC
AAGAAAGGATGGACTGCGTACAAGTTACAGCTGTTCAAAATGTTCCCTATCATCTGGCCATCCTGGTA
TCCTGGCTGCTCTGCTTCATCTTACGGTGACAGATGCTTCCCTCCCGACAGCACAAGTATGGCTTC
TATGCTCGCACAGATGCCAGGCAAGCGGTGCTTCTGGTAGCCCGTGGTTAAGGTTCCATACCCATTT
CAGTGGGGACTGCCACCGTGTCTGCGCCGGTGTATCGGCATGCTCAGTCCGTTGGTCCGACATC
ATCGAGTCTATTGGTGACTACTACGCTGTGACGGCTGTCTGTGCCACCCCGCCATCCACGCA
ATAAACAGGGGAATTTTCTGTTGGAAGGCCTCTCCTGTGTTCTTGTGGCATATTTGGTACTGGGAATGGC
TCTACTTCATCCAGTCCCAACATTGGAGTTTTGGGAATTACAAAGGTCGGCAGCCGCCGCTGATACAG
TGCGGAGCAGCCCTCATGCTCGCTCTGGGCATGATCGGGAAGTTCAGCGCCCTCTTTGCGTCCCTCCG
GATCCTGTGCTGGGAGCCCTGTTCTGCACGCTCTTTGGAATGATCACAGCTGTTGGCCTCTCAACCTG
CAGTTCATTGATTTAAATTTCTCCCGAACCTCTTTGTGCTGGATTTTCGATCTCTTTGGGCTCGTC
CTTCAAGTTACCTCAGACAGAACCCTCTGGTCACAGGATAACAGGAATCGATCAAGTGTGAACGTC
CTTCTCACAAGTCTATGTTGTAGGGGCTGTGTGGCTTTTATCCTGGATAACACCATCCAGGCACT
CCAGAGGAAAGAGGAATCCGAAATGGAAGAAGGGTGTGGCAAAGGGAACAAATCACTCGACGGCATG
GAGTCGTACAATTTGCCATTTGGCATGAACATTATAAAAAATACAGATGCTTCAGCTACTTACCCATC
AGCCCAACCTTTGTGGGCTACACATGGAAGGCCTCAGGAAGAGCGACAACAGCCGGAGTTCAGATGAA
GACTCCAGGCCACGGGA
ACGCGTACGCGGCCGCTCGAGCAGAACTCATCTCAGAAGAGGATCTGGCAGCAAATGATATCCTGGAT
TACAAGGATGACGACGATAAGGTTTAAACGGCCGGC
```

Protein Sequence:

>Peptide sequence encoded by RC216776
 Blue=ORF Red=Cloning site Green=Tag(s)

```
MMGIGKNTTSKSMAGSSTEGKYEDEAKHPAFFTLPVVINGGATSSGEQDNDELMAIYTTENGLAEK
SSLAETLDSTGSLDPQRSMDIYTIEDVPPWYLCIFLGLQHYLTCFSGTIAVPFLADAMCVGYDQWATS
QLIGTIFFCVGIITLLQTTFGCRLPLFQASAFAPLAPARAILSLDKWKCNTTDSVANGTAELLHTEHI
WYPRIREIQGAIIMSSLIEVVIKLLGLPGALLKYIGPLTIPTVALIGLSGFQAAGERAGKHWGIAMLT
IFLVLLFSQYARNVKFPLPIYKSKGWTAAYKLQLFKMFPIILAILVSWLLCFIFTVDVFPDSTKYGF
YARTDARQGVLLVAPWFKVPYFQWGLPTVSAAGVIGMLSAVVASIIESIGDYYACARLSCAPPPPIHA
INRGI FVEGLSCVLDGIFGTGNGSTSSSPNIGVLGITKVGSRRIQCGAALMLALGMIGKFSALFASLP
DPVLGALFCTLFGMITAVGLSNLQFIDLNSSRNLFVLFISIFFGLVLPSTYLRQNPLVTGITGIDQVLNV
LLTTAMFVGGCVAFILDNTIPGTPEERGIRKWKKGVGKGNKSLDGMSYNLFPGMNIKKYRCFSYLP
SPTFVGYTWKGLRKSDNSRSDSDSQATG
TRTRPLEQKLISEEDLAANDILDYKDDDDKV
```

Chromatograms: https://cdn.origene.com/chromatograms/mk6711_d01.zip
 Restriction Sites: SgfI-MluI
 Cloning Scheme:



ACCN: NM_005116
 ORF Size: 1950 bp

OTI Disclaimer: Due to the inherent nature of this plasmid, standard methods to replicate additional amounts of DNA in E. coli are highly likely to result in mutations and/or rearrangements. Therefore, OriGene does not guarantee the capability to replicate this plasmid DNA. Additional amounts of DNA can be purchased from OriGene with batch-specific, full-sequence verification at a reduced cost. Please contact our customer care team at custsupport@origene.com or by calling 301.340.3188 option 3 for pricing and delivery.

The molecular sequence of this clone aligns with the gene accession number as a point of reference only. However, individual transcript sequences of the same gene can differ through naturally occurring variations (e.g. polymorphisms), each with its own valid existence. This clone is substantially in agreement with the reference, but a complete review of all prevailing variants is recommended prior to use. [More info](#)

OTI Annotation: This clone was engineered to express the complete ORF with an expression tag. Expression varies depending on the nature of the gene.

Components: The ORF clone is ion-exchange column purified and shipped in a 2D barcoded Matrix tube containing 10ug of transfection-ready, dried plasmid DNA (reconstitute with 100 ul of water).

Reconstitution Method:

1. Centrifuge at 5,000xg for 5min.
2. Carefully open the tube and add 100ul of sterile water to dissolve the DNA.
3. Close the tube and incubate for 10 minutes at room temperature.
4. Briefly vortex the tube and then do a quick spin (less than 5000xg) to concentrate the liquid at the bottom.
5. Store the suspended plasmid at -20°C. The DNA is stable for at least one year from date of shipping when stored at -20°C.

RefSeq: [NM_005116.4](#)

RefSeq Size: 6953 bp

RefSeq ORF: 1953 bp

Locus ID: 9962

UniProt ID: [Q9UGH3](#)

Cytogenetics: 20p13

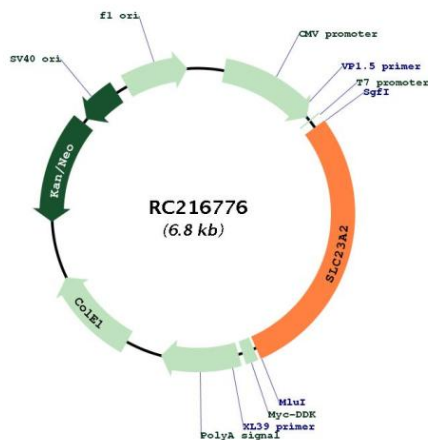
Domains: xan_ur_permease

Protein Families: Transmembrane

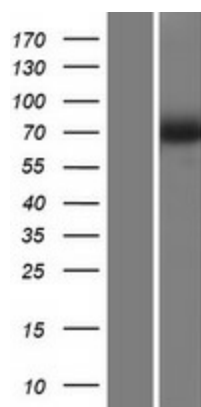
MW: 70.3 kDa

Gene Summary: The absorption of vitamin C into the body and its distribution to organs requires two sodium-dependent vitamin C transporters. This gene encodes one of the two required transporters and the encoded protein accounts for tissue-specific uptake of vitamin C. Previously, this gene had an official symbol of SLC23A1. [provided by RefSeq, Jul 2008]

Product images:



Circular map for RC216776



Western blot validation of overexpression lysate (Cat# [LY417506]) using anti-DDK antibody (Cat# [TA50011-100]). Left: Cell lysates from untransfected HEK293T cells; Right: Cell lysates from HEK293T cells transfected with RC216776 using transfection reagent MegaTran 2.0 (Cat# [TT210002]).