

## Product datasheet for **RC216773**

### **SH3RF3 (NM\_001099289) Human Tagged ORF Clone**

#### **Product data:**

|                           |  |
|---------------------------|--|
| Product Type:             | Expression Plasmids                          |
| Product Name:             | SH3RF3 (NM_001099289) Human Tagged ORF Clone |
| Tag:                      | Myc-DDK                                      |
| Symbol:                   | SH3RF3                                       |
| Synonyms:                 | POSH2; SH3MD4                                |
| Mammalian Cell Selection: | Neomycin                                     |
| Vector:                   | pCMV6-Entry (PS100001)                       |
| E. coli Selection:        | Kanamycin (25 ug/mL)                         |



[View online »](#)

**ORF Nucleotide Sequence:**

>RC216773 representing NM\_001099289  
 Red=Cloning site Blue=ORF Green=Tags(s)

TTTTGTAATACGACTCACTATAGGGCGGCCGGGAATTCGTCGACTGGATCCGGTACCGAGGAGATCTGCC  
 GCC**GCGATCGCC**

ATGCTGCTCGGAGCGTCTGGTGTGCGCATCCAAGGCGGCCCGCTGCTGCGCAGAGCGAGGGCGACG  
 AGGACAGGCCAGGCGAGCGACGGCGGCGTGGGGCGGCCACCGCCCGGGGGCGGCGAGGACATGGA  
 CGAGTCGTCGCTGCTGGACCTGCTGGAGTGTCTCCGTGTGTCTGGAGCGCTGGACACCACGGCCAAGGTG  
 CTGCCATGCCAACACTTTCTGCCCGCTGCCTGGAGAGCATCGTGTGCTCGCGCCACGAGTGCCT  
 GCCCGAGTGCCGCATCCTGGTGGGCTGCGGCGTGGACGAACTGCCCGCCAACATCTTGCTGGTGCAGT  
 GCTGGACGGCATCCGTCAGCGGCCCGCGCGGGCACCAGCCCGCGGCGAGCCCGCCGCGCTCCCATC  
 CCAGGCCAGAGTGCAGCCCGCGCTCGCGGGCGGGGGCGGCGGCGAGGCAGCACCCCGGTTCC  
 CGGTTTTCTCTCCGCGCGCGGGCAGCACCGCCGCGAGTCTGCGGGAGCTGGCGACCAGCAGGACCGC  
 GCCGGCGCAAAGAATCCCTGCCTGCTTCCCTATGGCAAGGCCCTCTACAGCTACGAGGGGAAGGAACCT  
 GGTGACCTCAAGTTCAACAAGGGGGACATCATCGTCTGCGGCGCAAGGTGGATGAACAGTGGTACCAGG  
 GCGAGCTGCACGGCACACAGGGTTCCTCCAGCCAGCTATATCCAGTGCATCCAGCCCTTGCCACACGC  
 CCCGCCAGGGAAAAGCACTTTATGATTTGAGATGAAGGACAAAGACCAAGACAAGGACTGTCTGACC  
 TTCACCAAGGACGAGATTCTGACGGTGTCTCAGGAGAGTGGATGAGAACTGGGCGGAAGGCATGCTGGGAG  
 ACAAGATCGGGATCTTCCCGCTCTGTACGTGGAGCTCAATGACTCCGCCAAGCAGCTCATTGAGATGGA  
 CAAGCCATGCCAGCCGCTGCATCCAGCTGCAATGCCTCCCTGCCCTCTGACTCCGGCGCTGTGGCCAGC  
 GTGGCCCAAGTCCACTTTAAGCAGCTCAGGGCGGTGAGTGCCTTTAGCGGGCGTGTGGATGGCAAGA  
 AGAACCAAGAAAACGCCACTCTTACCAGCGCTCAGTGTGACGCACAGATCCTCCAGGCTGCCAGCCA  
 CAGGCATTCCATGGAATTAAGTGTCCAGTGTGATCAGCTCCAGCGATCCCGAGCCGCGGCCAGGATT  
 GGAGACCTTGCTCATCTGTGCTGCGCTGCTCCACCCAGGATGTCTCCTCCTCGCGGGATCTACCCCA  
 CGGCTGTCCACGGGCTGCCTCGGTGTCTGGAGAGCAGGGCACGCCTCCCAAGTCCAGCTGCCCTCAA  
 CGTGTACTGGGCTCTACGCTACAAGCCCGAAGAGTGACGAGCTGGAGCTGCACAAGGAGAGATG  
 TACCGGTCTCGAGAAGTGTGAGGATGGTGTCAAGGGGGCGTCTCTGAGGACCGGGTCTCTGGGG  
 TGTTCGCCGAACTACGTGACACCCGTTCCAGGGTGCCTGCAGGAGGGCAGGGCCGCCCGGAATAA  
 TGTAGTCGGAGGGTCTCCACTGGCCAAAGGATAACCACAACCATGCACCCAGGCAGTGGGAGTCTGAGC  
 AGCCTGGCCACTGCCACCAGGCCCGCCCTGCCATCACCCTCCCGAGGCCACGCCAGCACCCACAG  
 CCTCGCCCCAACAGGCAGCTGTCTACGGCACTCAGCCAGCCAACGGCCAGCCAAGCCCGAGCACCAT  
 TTCAACAGCTGCCCACTCTGCAGCCAGGCTCAGGACCGCCAACCTGCCACCGTGTACCCCTGCGCACC  
 CAGAACTCTCCATCCCGCTGCCTGCCACCAGCCTCAGGCCCCACTCGGTGGTGTCCCGCAGCACAGCC  
 ACCAGCCCCCGGTGCAGATGTGCCACGGCCGGCCATCCCCCTCACATCAGCAGCATCAGCCATCACACC  
 TCCCAACGTGAGTCCGCAAACTCAACGGGGAGGCTGGAGGGGGGCCATCGGTGTTCTGTCCACATCC  
 AGCCCCACCAACCGGGATGCAAACTAGACGAGAAGAAAAGTAAAAGAAAAGAGAAGAAGAGTGGGCTCC  
 TGAAGTCTTAGCCGGAGCATCCACCAAGAAGAAGTACGCTCCCGCCATCTGTGTCTCAACCCACGA  
 CCCCAGGTGGCGTGGACGCCCTGCTCAAGGTGCAAGTGGGCCCCGAAGTGTCTCACTGTCCATCCAC  
 GGCAGGGCAGGGTCTGCCCCATAGAGAGCGAGATGCAGGGTGCCATGGGGATGGAGCCTCTGCACAGGA  
 AGGCAGGCTCCTTGATCTAAACTTCACATCTCCTTCCCGCAAGCTCCGCTGTCCATGGCTGCCATCCG  
 CCCCAGCCAAAGCTGTTGCCAGAGAGAGGTACCGCGTGGTGGTCTCGTACCCACCCAGAGTGAAGCG  
 GAGATCGAGCTGAAGGAAGGCGACATCGTCTTTGTGCACAAGAAGCGTGAGGACGGCTGGTACAAGGGGA  
 CCCTGCAGCGGAACGGCCGACAGGCCTTCCCGGGCAGCTTCGTGAGAGCTTC

**ACGCGT**ACGCGGCCGCTCGAGCAGAACTCATCTCAGAAGAGGATCTGGCAGCAATGATATCTGGATT  
 ACAAGGATGACGACGATAAGGTTTAA

**Protein Sequence:** >RC216773 representing NM\_001099289  
 Red=Cloning site Green=Tags(s)

```

  MLLGASWLCASKAAAAAQSEGDEDRPGERRRRRAATAAGAGEDMDESSLDDLLECSVCLERLDTTAKV
  LPCQHTFCRRCLSEIVCSRHELRCPECRILVCGVDEL PANILLVRLLDGIRQRPRAGTSPGGSPPARPI
  PGQSAAPTLAGGGGAAGSTPGSPVFLSAAAGSTAGSLRELATSRTAPAAKNPCLLPYGKALYSYEGKEP
  GDLKFNKGDIIIVLRRKVDEQWYHGELHGTQGF LPASYIQCIQPLPHAPPQ GKALYDFEMKDKDQDKDCLT
  FTKDEILTVLRRVDENWAEGLGDKIGIFPLLYVELNDSAKQLIEMDKPCAAAASCNASLPDSGAVAS
  VAPSPTLSSSGAVSAFQRRVDGKNTKKRHSFTALSVTHRSSQAASHRHSMEISAPVLISSSDPRAAARI
  GDLAHLSCAAPTQDVSSSAGSTPTAVPRAASVSGEQGTPPKVQLPLNVYLALYAYKPQKSDELELHKGEM
  YRVLEKCDQGWFKGASLRTGVSGVFPNGYVTPVSRVPAGGAGPPRNNVVGGSPLAKGITTTMHPGSGLS
  SLATATRPALPITTPQAHAQHPTASPPTGSLRHS AQPTASQARSTI STA AHSAAQAQRPTATVSPLRT
  QNSPSRLPATSLRPHSVSPQSHQPPVQMCPRAIPL TSAASAITPPNVSAANLNGEAGGGPIGVLSTS
  SPTNTGCKLDEKKSEKKEKKSGLL KLLAGASTKKKSRSPPSVSP THDPQVAVDALLQ GAVGPEVSSLSIH
  GRAGSCP I ESEM QGAMGMEPLHRKAGSLDLNFTSPSRQAPLSMAAIRPEPKLLPRERYRVVVSYPQSEA
  EIELKEGDIVFVHKKREDGWYKGLQRNGRTGLFPGSFVESF
  
```

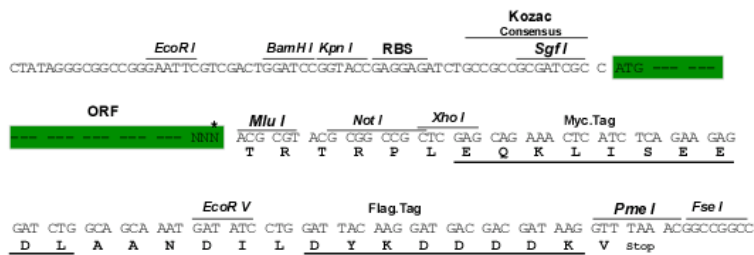
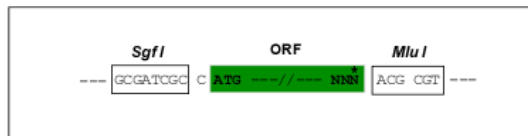
TRTRPLEQKLISEEDLAANDILDYKDDDDKV

**Chromatograms:** [https://cdn.origene.com/chromatograms/mk8018\\_c06.zip](https://cdn.origene.com/chromatograms/mk8018_c06.zip)

**Restriction Sites:** SgfI-MluI

**Cloning Scheme:**

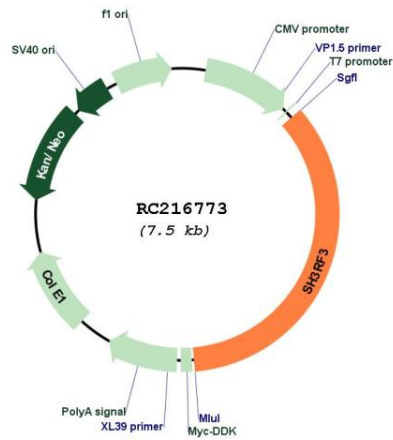
Cloning sites used for ORF Shuttling:



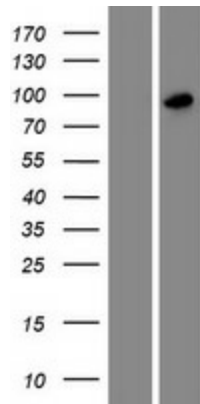
\* The last codon before the Stop codon of the ORF

|                               |   |
|-------------------------------|---|
| <b>ACCN:</b>                  | NM_001099289  |
| <b>ORF Size:</b>              | 2646 bp   |
| <b>OTI Disclaimer:</b>        | The molecular sequence of this clone aligns with the gene accession number as a point of reference only. However, individual transcript sequences of the same gene can differ through naturally occurring variations (e.g. polymorphisms), each with its own valid existence. This clone is substantially in agreement with the reference, but a complete review of all prevailing variants is recommended prior to use. <a href="#">More info</a>  |
| <b>OTI Annotation:</b>        | This clone was engineered to express the complete ORF with an expression tag. Expression varies depending on the nature of the gene.  |
| <b>Components:</b>            | The ORF clone is ion-exchange column purified and shipped in a 2D barcoded Matrix tube containing 10ug of transfection-ready, dried plasmid DNA (reconstitute with 100 ul of water).  |
| <b>Reconstitution Method:</b> | <ol style="list-style-type: none"><li>1. Centrifuge at 5,000xg for 5min.</li><li>2. Carefully open the tube and add 100ul of sterile water to dissolve the DNA.</li><li>3. Close the tube and incubate for 10 minutes at room temperature.</li><li>4. Briefly vortex the tube and then do a quick spin (less than 5000xg) to concentrate the liquid at the bottom.</li><li>5. Store the suspended plasmid at -20°C. The DNA is stable for at least one year from date of shipping when stored at -20°C.</li></ol> |
| <b>RefSeq:</b>                | <a href="#">NM_001099289.3</a>  |
| <b>RefSeq Size:</b>           | 5608 bp   |
| <b>RefSeq ORF:</b>            | 2649 bp   |
| <b>Locus ID:</b>              | 344558  |
| <b>UniProt ID:</b>            | <a href="#">Q8TEJ3</a>  |
| <b>Cytogenetics:</b>          | 2q13  |
| <b>MW:</b>                    | 92.6 kDa  |
| <b>Gene Summary:</b>          | Has E3 ubiquitin-protein ligase activity.[UniProtKB/Swiss-Prot Function]  |

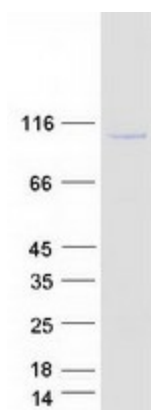
Product images:



Circular map for RC216773



Western blot validation of overexpression lysate (Cat# [LY420427]) using anti-DDK antibody (Cat# [TA50011-100]). Left: Cell lysates from untransfected HEK293T cells; Right: Cell lysates from HEK293T cells transfected with RC216773 using transfection reagent MegaTran 2.0 (Cat# [TT210002]).



Coomassie blue staining of purified SH3RF3 protein (Cat# [TP316773]). The protein was produced from HEK293T cells transfected with SH3RF3 cDNA clone (Cat# RC216773) using MegaTran 2.0 (Cat# [TT210002]).