

## Product datasheet for RC216766

### GLEPP1 (PTPRO) (NM\_030667) Human Tagged ORF Clone

#### Product data:

Product Type:	Expression Plasmids
Product Name:	GLEPP1 (PTPRO) (NM_030667) Human Tagged ORF Clone
Tag:	Myc-DDK
Symbol:	GLEPP1
Synonyms:	GLEPP1; NPHS6; PTP-OC; PTP-U2; PTPROT; PTPU2; R-PTP-O
Mammalian Cell Selection:	Neomycin
Vector:	pCMV6-Entry (PS100001)
E. coli Selection:	Kanamycin (25 ug/mL)
ORF Nucleotide Sequence:	>RC216766 representing NM_030667 Red=Cloning site Blue=ORF Green=Tags(s)

TTTTGTAATACGACTCACTATAGGGCGGCCGGGAATTCGTCGACTGGATCCGGTACCGAGGAGATCTGCC  
GCC**CGATCGCC**

ATGGGGCACCTGCCACGGGGATACACGGCGCCCGCCGCTCCTGCCTCTGCTCTGGCTCTTTGTGCTGT  
TCAAGAATGCTACAGCTTCCATGTAAGTGTCCAAGATGATAATAACATCGTTGTCTCATTAGAAGCTTC  
AGACGTCATCAGTCCAGCATCTGTGTATGTTGTGAAGTAAGTGGTGAATCCAAAAATTATTTCTCGAA  
TTTGAGGAATCAACAGCACTTTCCTCCTCCTGTTATTTTCAAGGCCAGTTATCATGGCCTTTATTATA  
TAATCACTCTGGTAGTGGTAAATGGAAATGTTGGTACCAAGCCATCCAGATCAATCACTGTGTTAACAA  
ACCTCTACCTGTAACCAAGTGTTCATATATGACTATAAACCTTCTCCTGAAACAGGAGTCTGTTGAA  
ATACATTATCCAGAAAAATATAACGTTTTCCACAAGAGTGAACATTAGCTACTGGGAGGTAAGACTTCC  
GGACAATGCTATATAAGATTTCTTTAAGGGAAAAACAGTATTTAATCACTGGCTGCCAGGAATGTGTTA  
TAGTAATACACCTTTCAGCTGGTATCTGAGGCACTTTTAAATAAAAGTACCTTGTGAGTACAGTGGT  
GTCAGTCACGAACCCAAACAGCACAGAAGTCCCTTATCCACCTCAAAATATTTCCGTTTCGTATCGTAA  
ACTTGAACAAAAACAACCTGGGAAGAACAGAGTGGCAATTTCCAGAAGAATCCTTCATGAGATCACAGA  
TACAATAGGAAAAAGAAAACTTCCATTTTACAGAAGAAACCCCTGAAATTCCTCGGGCAACATTTCT  
TCCGGTTGGCCTGATTTTAAATAGCAGTACTATGAACTACGTCAGCCATATTTGGTGGGACAGTGCAT  
CTGCAGCTCCTGAAAGTGAAGATGAATTTGTGAGCGTACTTCCCATGGAATACGAAAAATAACAGTACAT  
CAGTGAGACAGAGAAGTCAACATCAGGCTCTTTTCTCCTTTTTCCCTGTGCAAATGATATTGACCTGGTTA  
CCACCCAAACCACCCACTGCTTTTGATGGGTTCCATATCCATATTGAACGAGAAGAGAAGCTTTACTGAAT  
ATTTGATGGTGGATGAAGAAGCACATGAATTTGTTGCAGAAGTGAAGGAACCTGGGAAATATAAGTTATC  
TGTGACAACCTTTAGTTCCTCAGGATCTGTGAACTCGAAAAAGTCACTCAGCAAAATCACTCAGCTTT  
TATATCAGTCCTTCAGGAGAGTGGATTGAAGAAGTACCGAGAAGCCGAGCACGTGAGTGTCCACGTTT  
TAAGCTCAACCACTGCCTTGATGTCCTGGACATCTTCCAAGAGAAGTACAACAGCACCATTTGTGCTGT  
GGTGTGCTGACTGCCAGAAACAAAAGGAGAGCCAGAGGCTTAAAAGCAGTACTGCCTCAGGTTAAC



TCAAGCAAACCTATTATTGAAAATCTGGTTCCTGGTGCCAGTACCAGGTTGTAATATACCTAAGGAAAG  
GCCCTTTGATTGGACCACCTTCAGATCCTGTGACATTTGCTATTGTTCCACAGGAATAAAGGATTTAAT  
GCTCTATCCTTTGGGTCCTACGGCCGTGGTTCGAGCTGGACCAGACCTATTTAGGCGTGTTCAGAAAA  
TACGTGGTTGAAATGTTTTATTTCAACCCTGCTACAATGACATCAGAGTGGACCACCTACTATGAAATAG  
CAGCAACTGTTTCCTTAACTGCATCCGTGAGAATAGCTAATCTGCTGCCAGCATGGTACTACAACCTCCG  
GGTTACCATGGTGACGTGGGAGATCCAGAATTGAGCTGCTGTGACAGCTCTACCACAGCTTCATAACA  
GCCCCAGTGGCTCCGGAATCACTTCTGTGGAATATTTCAACAGTCTGTTATATATCAGTTGGACATATG  
GGGATGATACAACGGACTTGCCATTCTAGAATGCTTCACTGGATGGTGGTTGCAGAAGGAAAAAGAA  
AATTAAGAGAGTGAACACGCAATGTCATGACTGCAATTCTCAGCTTGCTCCAGGCGACATCTATAAC  
CTCTCAGTAACTGCTTGTACTGAAAGAGGAAGTAACCTCCATGCTCCGCCCTTGTCAAGCTAGAACCAG  
CTCCACCAAACTCACTCTTCGAGTGAACAAAACCCAGACTTCAGTGACTTTGCTGTGGTGGAAAGGG  
AGTAGCTGATTTCTTTGAAGTTTTCTGTCAACAAGTTGGCTCCAGTCAAGAAAACCAACTTCAGGAACCA  
GTTGCTGTTTCTCCATGTCGTGACCATCTCCAGCCTTCTTCTGCCACTGCCTACAATTGTAGTGCA  
CCAGCTTAGCCATGACAGCCCCAGTGTCCCTACGTTTCATAGCCGTCTCAACAATGGTTACAGAGATGAA  
TCCAATGTGGTAGTGATCTCCGTGCTGGCCATCCTTAGCACACTTTAATTGGACTGTTGCTTGTACC  
CTCATTATTCTTAGGAAAAGCATCTGCAGATGGCTAGGGAGTGTGGAGCTGGTACATTTGTCAATTTG  
CATCCTTAGAGAGGGATGAAAAGCTTCCATACTGCGGTAGGAGTATATTTGCTTTCTTAACCCTGCT  
ACCCTCATGTCTTTGGACTGATTATCTTTTGGCATTATTAATCCTTGGAGTAAAAATGGTTTAAAG  
AAGAGGAAACTGACAAACCCGGTTCAACTGGATGACTTTGATGCCTATATTAAGGATATGGCCAAAGACT  
CTGACTATAAATTTCTCTTCAGTTTGAGGAGTTGAAATTGATTGGACTGGATATCCACACTTTGCTGC  
AGATCTTCCACTGAATCGATGTAACAAACCGTTACACAAACATCCTACCATATGACTTCAGCCGTGTGAGA  
TTAGTCTCCATGAATGAAGAGGAAGGTGCAGACTACATCAATGCCAATATATTCCTGGATACAACCTCAC  
CCCAGGAGTATATTGCCACCCAGGGGCCACTGCCTGAAACCAGAAATGACTTCTGGAAGATGGTCTGCA  
ACAAAAGTCTCAGATTATTGTCATGCTCACTCAGTGAATGAGAAAAGGAGGGTGAATGTGACCATTAC  
TGGCCATTACGGAAGAACCTATAGCCTATGGAGACATCACTGTGGAGATGATTTAGAGGAAGAGCAGG  
ACGACTGGCCTGTAGACACTTCCGGATCAACTATGCTGACGAGATGCAGGATGTGATGCATTTTAACTA  
CACTGCATGGCCTGATCATGGTGTGCCACAGCAAATGCTGCAGAAAGTATCCTGCAGTTTGTACACATG  
GTCCGACAGCAAGCTACCAAGAGCAAAGGTCCCATGATCATTCACTGCAGTGTGGCGTGGGACGGACAG  
GAACATTATTGCCCTGGACAGGCTCTTGACGACATTCGGGATCATGAGTTTGTGACATCTTAGGGCT  
GGTGTGAGAAATGAGGTATACCGGATGTCTATGGTACAGACAGAGGAGCAGTACATTTTATCCATCAG  
TGTGTGCAACTGATGTGGATGAAGAAGAAGCAGCAGTTCTGCATCAGTGTGCATATACGAGAATGTTA  
GCAAGTCC

ACGCGTACGCGGCCGCTCGAGCAGAACTCATCTCAGAAGAGGATCTGGCAGCAAATGATATCCTGGATT  
ACAAGGATGACGACGATAAGGTTTAA

**Protein Sequence:** >RC216766 representing NM\_030667  
 Red=Cloning site Green=Tags(s)

MGHLPTGIHGARRLLPLLWLVFLFKNATAFHVTVQDDNNIVVLSLEASDVISPASVYVVKITGESKNYFFE  
 FEEFNSTLPPPVIFKASYHGLYYIITLVVYNGNVVTKPSRSITVLTKPLPVTSVSIYDYKPSPETGVLFE  
 IHYPEKYNVFTRVNI SYWEGKDFRMLYKDFFKGKTVFNHWP GMCYSNITFQLVSEATFNKSTLVEYSG  
 VSHEPKQHRTAPYPPQNI SVRI VNLNKNWEEQSGNFPEESFMRSQDTIGKEKLFHFTEETPEIPSGNIS  
 SGWPDFNSSDYETTSQPYWDSASAAPSEDEFVSVL PMEYENNSTLSETEKSTSGSF SFFPVQMILTWL  
 PPKPPTAFDGFHIIHIEREENFTEYLMVDEEAHEFVAELKEPGKYKLSVTTFS SSGSCETRKSQSAKLSL  
 YISPSGEWIEELTEKQHVSVHVL SSTITALMSWTSSQENYNSTIVSVVSLTCQKQKESQRLEKQYCTQVN  
 SSKPIIENLVPGAQYQVVIYLRKGPLIGPPSDPVTFAIVPTGIKDLMLYPLGPTAVVLSWTRPYLVGFRK  
 YVEMFYFNPATMSEWTTYEIAATVSLTASVRIANLLPAWYVNFVMTVMTWGDPELSCCDSSTISFIT  
 APVAPEITSVEYFNLLYISWTYGD DTDLSHRMLHWMVVAEGKKKIKKSVTRNVMTAILSLPPGDIYN  
 LSVTACTERGSNTSMLRLVKLEPAPPKSLFAVNKQTQSVTLWVEEGVADFFEVFCQQVGSQKTKLQEP  
 VAVSSHVVTISSLLPATAYNCSVTSF SHDSPSVPTFIAVSTMVTEMNPNVVVISVLAAILSTLLIGLLLVT  
 LIILRKKHLQMARECGAGTFVNFASLERDGKLPYNWRRSIF AFLTLLPSCLWTDYLLAFYINPWSKNGLK  
 KRKLTNPVQLDDFDAYIKDMAKDSYKFSLQFEELKLI GLDIPHFAADLPLNRCKNRYTNILPYDFSRVR  
 LVSMNEEEGADYINANYIPGYNSPQEYIATQGPLPETRNDFWKMWLQKKSQIIVMLTQCNEKRRVKCDHY  
 WPFTEEPIAYGDITVEMISEEEQDDWACRHFRIYADEMQDVMHFNYTAWPDHGVPTANA AESILQFVHM  
 VRQQATKSKGPMI IHCSAGVGRGTGFIALDRLLQHIRDHEFVDILGLVSEMRSYRMSMVQTEEQYIFIHQ  
 CVQLMWMKKKQFCISDVIYENVSKS

TRTRPLEQKLISEEDLAANDILDYKDDDDKV

**Chromatograms:** [https://cdn.origene.com/chromatograms/mk6168\\_g04.zip](https://cdn.origene.com/chromatograms/mk6168_g04.zip)

**Restriction Sites:** SgfI-MluI

**Cloning Scheme:**



**ACCN:** NM\_030667

**ORF Size:** 3648 bp

**OTI Disclaimer:** Due to the inherent nature of this plasmid, standard methods to replicate additional amounts of DNA in E. coli are highly likely to result in mutations and/or rearrangements. Therefore, OriGene does not guarantee the capability to replicate this plasmid DNA. Additional amounts of DNA can be purchased from OriGene with batch-specific, full-sequence verification at a reduced cost. Please contact our customer care team at [custsupport@origene.com](mailto:custsupport@origene.com) or by calling 301.340.3188 option 3 for pricing and delivery.

The molecular sequence of this clone aligns with the gene accession number as a point of reference only. However, individual transcript sequences of the same gene can differ through naturally occurring variations (e.g. polymorphisms), each with its own valid existence. This clone is substantially in agreement with the reference, but a complete review of all prevailing variants is recommended prior to use. [More info](#)

**OTI Annotation:** This clone was engineered to express the complete ORF with an expression tag. Expression varies depending on the nature of the gene.

**Components:** The ORF clone is ion-exchange column purified and shipped in a 2D barcoded Matrix tube containing 10ug of transfection-ready, dried plasmid DNA (reconstitute with 100 ul of water).

**Reconstitution Method:**

1. Centrifuge at 5,000xg for 5min.
2. Carefully open the tube and add 100ul of sterile water to dissolve the DNA.
3. Close the tube and incubate for 10 minutes at room temperature.
4. Briefly vortex the tube and then do a quick spin (less than 5000xg) to concentrate the liquid at the bottom.
5. Store the suspended plasmid at -20°C. The DNA is stable for at least one year from date of shipping when stored at -20°C.

**RefSeq:** [NM\\_030667.3](#)

**RefSeq Size:** 5153 bp

**RefSeq ORF:** 3651 bp

**Locus ID:** 5800

**UniProt ID:** [Q16827](#)

**Cytogenetics:** 12p13-p12

**Domains:** Y\_phosphatase, PTPc\_motif, FN3

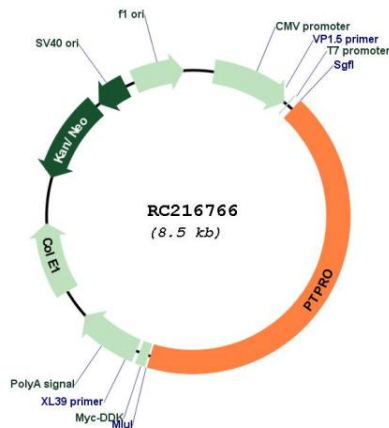
**Protein Families:** Phosphatase, Transmembrane

**MW:** 135.1 kDa

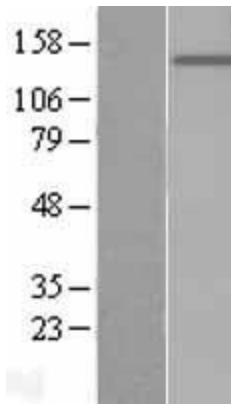
**Gene Summary:**

This gene encodes a member of the R3 subtype family of receptor-type protein tyrosine phosphatases. These proteins are localized to the apical surface of polarized cells and may have tissue-specific functions through activation of Src family kinases. This gene contains two distinct promoters, and alternatively spliced transcript variants encoding multiple isoforms have been observed. The encoded proteins may have multiple isoform-specific and tissue-specific functions, including the regulation of osteoclast production and activity, inhibition of cell proliferation and facilitation of apoptosis. This gene is a candidate tumor suppressor, and decreased expression of this gene has been observed in several types of cancer. [provided by RefSeq, May 2011]

**Product images:**



Circular map for RC216766



Western blot validation of overexpression lysate (Cat# [LY403070]) using anti-DDK antibody (Cat# [TA50011-100]). Left: Cell lysates from untransfected HEK293T cells; Right: Cell lysates from HEK293T cells transfected with RC216766 using transfection reagent MegaTran 2.0 (Cat# [TT210002]).