

Product datasheet for **RC216763**

Glycoprotein 2 (GP2) (NM_001502) Human Tagged ORF Clone

Product data:

Product Type:	Expression Plasmids
Product Name:	Glycoprotein 2 (GP2) (NM_001502) Human Tagged ORF Clone
Tag:	Myc-DDK
Symbol:	Glycoprotein 2
Synonyms:	ZAP75
Mammalian Cell Selection:	Neomycin
Vector:	pCMV6-Entry (PS100001)
E. coli Selection:	Kanamycin (25 ug/mL)



[View online »](#)

ORF Nucleotide Sequence:

>RC216763 representing NM_001502
 Red=Cloning site Blue=ORF Green=Tags(s)

TTTTGTAATACGACTCACTATAGGGCGGCCGGGAATTCGTCGACTGGATCCGGTACCGAGGAGATCTGCC
 GCC**CGGATCGCC**

ATGCCTCACCTTATGAAAGGATGGTGGGCTCTGGCCTCTGTGGCTGGCCTTGGTCTCCTGCATTCTGA
 CCCAGGCATCTGCAGTGCAGCGAGGTTATGGAAACCCATTGAAGCCAGTTCGTATGGGCTGGACCTGGA
 CTGCGGAGCTCCTGGCACCCAGAGGCTCATGTCTGTTTTGACCCTGTGAGAATTACACCCCTCGGAT
 GAACCTTCCGAAGCACAGAACTCAGCAGGGTCCCAGGGGTGCGATAAAAAACATGAGCGGCTGGTACC
 GCTTTGTAGGGGAAGGAGGAGTAAGGATGTCGGAGACCTGTGTCCAGGTGCACCGATGCCAGACAGACGC
 TCCCATGTGGCTGAATGGGACCCACCCTGCCCTTGGGGATGGCATACCAACCACACTGCCTGTGCCAT
 TGGAGTGGCAACTGCTGTTTCTGAAAACAGAGGTGCTGGTGAAGGCTGCCAGCGGGTACCATGTGT
 ACCGGTTGGAAGGCACTCCCTGGTGAATCTGAGATACTGCACAGACCCATCCACTGTGGAGGACAAGTG
 TGAGAAGGCTGCCGCCCGAGGAGGAGTGCCTTGCCTCAACAGCACCTGGGGCTGTTTCTGCAGACAG
 GACCTCAATAGTTCTGATGTCCACAGTTTGCAGCCTCAGCTAGACTGTGGGCCAGGGAGATCAAGGTGA
 AGGTGGACAAATGTTTGCTGGGAGGCTGGGTTTGGGGGAGGAGGTCATTGCCTACCTGCCGAGACCCAAA
 CTGCAGCAGCATCTGCAGACAGAGGAGGAACTGGGTATCTGTGACCAGCCCCGTCCAGGCTAGTGCC
 TGCAGGAACATCTGGAGAGAAAACAAACCCATGCCATCTACAAAAACACCCTCTCCTTGGTCAATGATT
 TCATCATCAGAGACACCATCCTCAACATCAACTCCAATGTGCCTACCCACTGGACATGAAAGTCAGCCT
 CCAAGCTGCCTTGACGCCATTGTAAGTCCCTGAACGTGAGTGGACGGGAATGGAGAGTTTATTGTC
 AGGATGGCCCTCTTCAAGACCAGAACTACACGAATCCTTACGAAGGGGATGCAGTTGAACTGTCTGTTG
 AGTCCGTGCTGTATGTGGTGCCATCTTGAACAAGGGGACACCTCCCGGTTTAACTGGTGTGGAGGAA
 CTGCTATGCCACCCCACTGAAGACAAGGCTGACCTTGTGAAGTATTTTCATCATCAGAAACAGCTGCTCA
 AATCAACGTGATTCCACCATCCACGTGGAGGAGAATGGGACGTCCTCGGAAAGCCGGTTCTCAGTTCAGA
 TGTTTATGTTTGTGGACATTATGACCTAGTTTTCTGCATTGTGAGATTCATCTCTGTGATTCTCTTAA
 TGAACAGTGCCAGCCTTCTTGTCAAGAAGTCAAGTCCGAGTGAAGTACCGGCCATCGACCTAGCCCGG
 GTTCTAGATTTGGGGCCATCACTCGGAGAGGTGCACAGTCTCCCGGTGCATGAATGGAACCCCTAGCA
 CTGCAGGGTCTGGTGGCTGGCTATGGTCTCCTGACTGTCTCCTGGCTTGGCTGTTT

ACGCGTACGCGGCCGCTCGAGCAGAACTCATCTCAGAAGAGGATCTGGCAGCAAATGATATCCTGGATT
 ACAAGGATGACGACGATAAGGTTTAA

Protein Sequence:

>RC216763 representing NM_001502
 Red=Cloning site Green=Tags(s)

MPHLMERMVGSGLLWALVSCILTQASAVQRGYGNPIEASSYGLDLDCGAPGTPEAHVCFDPCQNYTLDD
 EPFRSTENSAGSQGCDKNMSGWYRFVGEVGRMSETCVQVHRCQTDAPMWLNTHPALGDGINTHTACAH
 WSGNCCFWKTEVLVKACPGGYHYRLEGTWPCNLRYPSTVEDKCEKACRPEEECLALNSTWGCFCRQ
 DLNSSDVHSLQPQLDCGPREIKVKVDKLLGGLGLGEEVIAYL RDPNCSSILQTEERNWVSVTPVQASA
 CRNILERNQTHAIYKNTLSLVNDFIIRDITLNLNINFQAYPLDMKVSQAALQPIVSSLNVSVDNGEFIV
 RMALFQDQNYTNPYEGDAVELSVESVLYVGAILEQGDTSRNLVLRNCYATPTEDKADLVKYFIIRNSCS
 NQRDSTIHVEENGQSSESRFSVQMFMAFAGHYDLVFLHCEIHLCDLSNEQCQPSCSRSQVRSEVPAIDLAR
 VLDLGPITRRGAQSPGVMNGTPSTAGFLVAWPMVLLTVLLAWLF

TRTRPLEQKLISEEDLAANDILDYKDDDDKV

Chromatograms:

https://cdn.origene.com/chromatograms/mk6811_d05.zip

Restriction Sites:

Sgfl-MluI

Cloning Scheme:


ACCN: NM_001502

ORF Size: 1602 bp

OTI Disclaimer: The molecular sequence of this clone aligns with the gene accession number as a point of reference only. However, individual transcript sequences of the same gene can differ through naturally occurring variations (e.g. polymorphisms), each with its own valid existence. This clone is substantially in agreement with the reference, but a complete review of all prevailing variants is recommended prior to use. [More info](#)

OTI Annotation: This clone was engineered to express the complete ORF with an expression tag. Expression varies depending on the nature of the gene.

Components: The ORF clone is ion-exchange column purified and shipped in a 2D barcoded Matrix tube containing 10ug of transfection-ready, dried plasmid DNA (reconstitute with 100 ul of water).

- Reconstitution Method:**
1. Centrifuge at 5,000xg for 5min.
 2. Carefully open the tube and add 100ul of sterile water to dissolve the DNA.
 3. Close the tube and incubate for 10 minutes at room temperature.
 4. Briefly vortex the tube and then do a quick spin (less than 5000xg) to concentrate the liquid at the bottom.
 5. Store the suspended plasmid at -20°C. The DNA is stable for at least one year from date of shipping when stored at -20°C.

RefSeq: [NM_001502.4](#)

RefSeq Size: 2439 bp

RefSeq ORF: 1605 bp

Locus ID: 2813

UniProt ID: [P55259](#)

Cytogenetics: 16p12.3

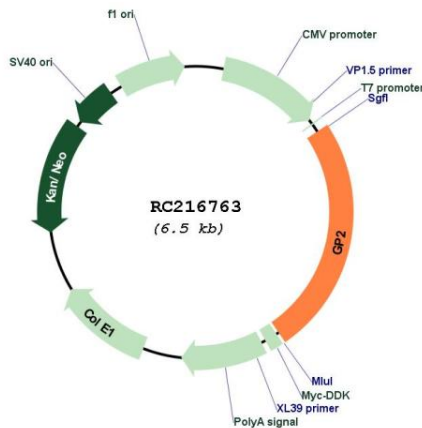
Domains: zona_pellucida

Protein Families: Druggable Genome, Secreted Protein, Transmembrane

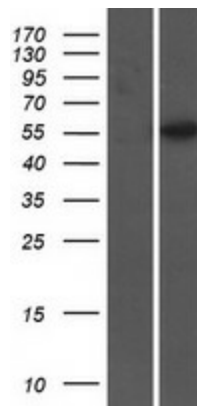
MW: 58.9 kDa

Gene Summary: This gene encodes an integral membrane protein that is secreted from intracellular zymogen granules and associates with the plasma membrane via glycosylphosphatidylinositol (GPI) linkage. The encoded protein binds pathogens such as enterobacteria, thereby playing an important role in the innate immune response. The C-terminus of this protein is related to the C-terminus of the protein encoded by the neighboring gene, uromodulin (UMOD). Alternative splicing results in multiple transcript variants. [provided by RefSeq, Jan 2015]

Product images:



Circular map for RC216763



Western blot validation of overexpression lysate (Cat# [LY419905]) using anti-DDK antibody (Cat# [TA50011-100]). Left: Cell lysates from untransfected HEK293T cells; Right: Cell lysates from HEK293T cells transfected with RC216763 using transfection reagent MegaTran 2.0 (Cat# [TT210002]).